

ANNEXS

ANNEX-1

**Historical Background of
Department of Roads and
Organization Chart**

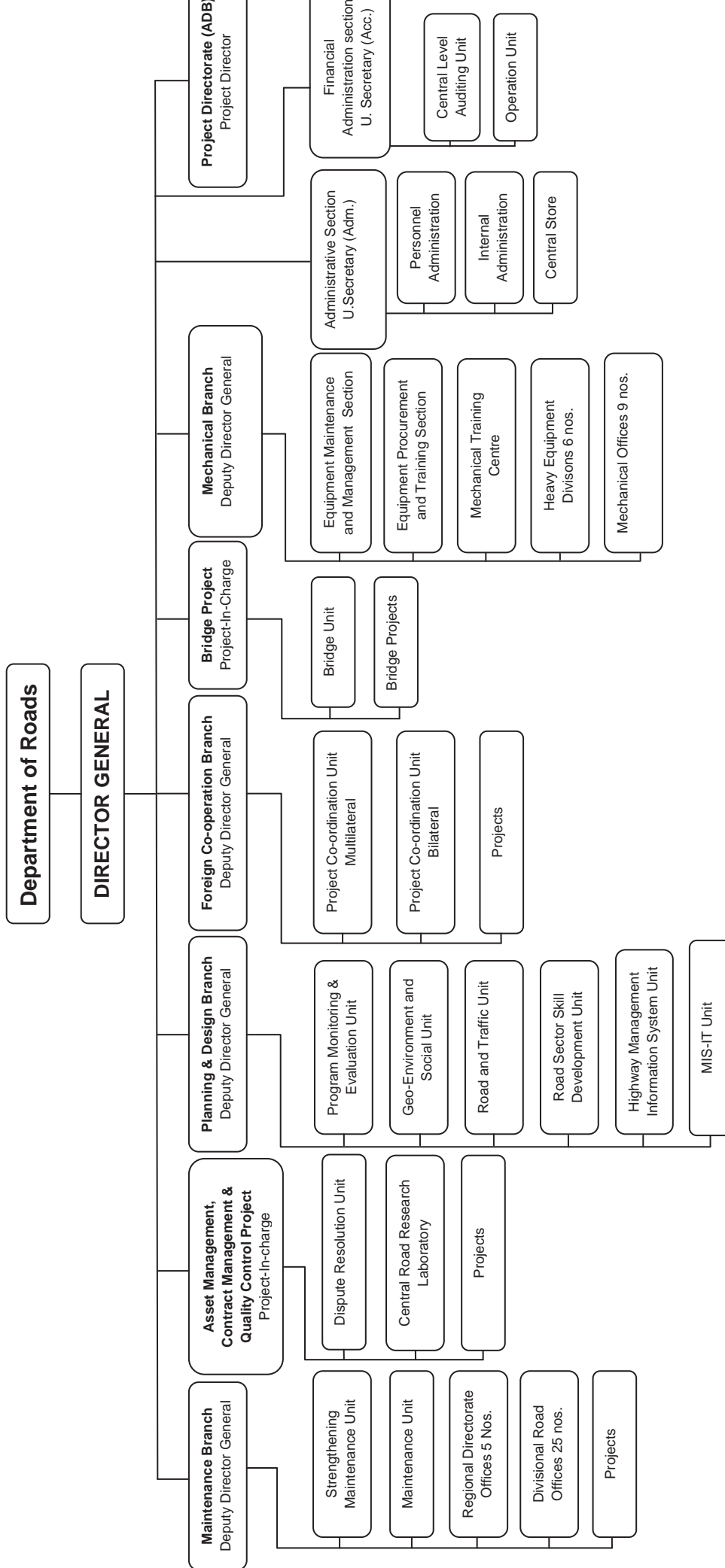
DEPARTMENT OF ROADS
HISTORICAL BACKGROUND AND EVENTS

SN	Historical/Present Name of the Office	Year (BS)		Office Head Chief Engineer/ Director General	Milestone
		From	To		
1.	Botokaj Goswara		2007	-	- Construction and Maintenance of Roads in Kathmandu
2.	Banaune Adda		2007	-	- Construction and Maintenance of all engineering works outside Kathmandu Valley
3.	Samarjung Company		2007	-	- Repair of Roads in Kathmandu Valley
4.	Naya Batokaj Adda		2007	-	- Construction of new roads. - Started survey for connecting Kathmandu to Hetauda by a motorable road via Bagmati valley
5.	Public Works Department	2007	2014	Kul Ratna Tuladhar	- Construction of Tribhuvan Rajpath by the Government of India. The road opened in 2013BS. - Construction of Kanti Rajpath Started - Construction of Hetauda Narayangadh road
6.	Road Transport Organisation (RTO)	2014	2018	Bishnu Bahadur Karki	- Representative from India and US also involved. Could not work satisfactorily - Trial Bridge Development
7.	Department of Roads	2018 2022	2022 2026	J.P. Sharma	- East-West Highway was Planned and Formulated. Earthen track was opened
8.	Unified Department of Roads (Public Works Department)	2022	2022	J.P. Sharma- Planning B.B. Karki - Construction B.K.Pokhrel- maintenance	- Several Advisors were also involved - First long term Road Development Plan was formulated in 2024 BS.
9.	Department of Roads	2027	2032	Dipti Jung Thapa	- The Road Development Strategy as adopted for the country continued with Development of National Highways and Feeder Roads
10.	Department of Roads	2032	2038	Birendra Pratap Shah	- Development of Strategic Road Network
11.	Department of Roads	2038	2044	Shiv Bahadur Pradhananga	- Initiation and Implementation of Feeder Road Project
12.	Department of Roads	2044	2044	Narayan Dutta Sharma	- Establishment of PMC
13.	Department of Roads	2045	2048	Narayan Dutta Sharma	- First Director General of DoR Continuation for the development of National Highways & Feeder Roads - Establishment of MRCU, HMIS and SMD - Implementation of projects under RFRP funded by IDA
14.	Department of Roads	2048	2049	Ram Babu Sharma	- Continuation of projects of construction and maintenance of SRN
15.	Department of Roads	2049	2050	Varun Prasad Shrestha	- Implementation of AHMP

16.	Department of Roads	2050	2051	Niranjan Prasad Chalise	<ul style="list-style-type: none"> - Implementation of SRIP funded by ADB - Initiation and Implementation of RMP/ODA - Establishment of TESU
17.	Department of Roads	2051	2053/9	Mohan Bahadur Karki	<ul style="list-style-type: none"> - Initiation of Priority Investment Plan - I - Implementation of Projects under RMDP funded by IDA
18.	Department of Roads	2053/9	2054/1	Niranjan Prasad Chalise	<ul style="list-style-type: none"> - Implementation of RMRP funded by IDA - Implementation of BUMP - Preparation of DOR Strategy
19.	Department of Roads	2054/1	2054/8	Bharati Sharma	<ul style="list-style-type: none"> - Initiation of RMRP funded by IDA
20.	Department of Roads	2054/8	2056/6	Niranjan Prasad Chalise	<ul style="list-style-type: none"> - Initiation of Transport policy - Initiation of Bardibas-Sindhuli Road Project
21.	Department of Roads	2056/6	2058/9	Ananda Prasad Khanal	<ul style="list-style-type: none"> - Implementation of Transport Policy - Initiation for preparation of 20 years Master Plan of DOR
22.	Department of Roads	2058/9	2061/9	Madad Gopal Malekhu	<ul style="list-style-type: none"> - Initiation for Preparation of standard Designs & Drawings of Roads & Bridges - Initiation for establishing SRN in GIS based data base - Implementation of RMDP - Formation of Road Board
23.	Department of Roads	2061/9	2064/2	Durga Prasad K.C.	<ul style="list-style-type: none"> - Finalisation of standard Design & Drawings Roads & Bridges - Finalising GIS based database of SRN - Finalization of Priority Investment plan-II - Finalization of Subregional Transport Facilitation Project
24.	Department of Roads	2064/2	2066/3	Tulsi Prasad Sitaula	<ul style="list-style-type: none"> - Initiation of Terai Road Project (Indian Grant) - Feasibility Study of North-South Fast Track - Implementation of RSDP (WB) - Implementation of e-Procurement - Implementation of Widening of Koteshwor-Bhaktapur Sector of Ariniko Highway (JICA) - Implementation of Road Sector Connectivity Project (ADB)
25.	Department of Roads	2066/3	2067/10	Ram Kumar Lamsal	<ul style="list-style-type: none"> - Establishment of 2 separate branches/project in DOR (ACQMP&Bridge)(Indian Grant) - Widespread continuation of e-bidding procedure within all DOR offices - Hulaki Lokmarga project established for effective implementation of road & bridge works - Recognition and effective implementation of North-South Corridor Road Project - Start of Emergency Flood Damage Rehabilitation Project (EFDRP) - Initiation of STEP, RCP, TPFF - Initiation of PPP in road works.

26	Department of Roads	2067/10	2068/4	Hariom Srivastav	Initiation of BMIS System in Department of Roads Completion of Kathmandu-Bhaktapur Road Project. Continuation of Road Sector Development Projects. Continuation of North South Corridor Road Projects. Continuation of Road Improvement Project.
27	Department of Roads	2068/4	2068/9	Indu Sharma Dhakal	Initiation of Kathmandu Valley Urban Transportation Master Plan. Initiation of implementation of Flyover at at major junctions of Kathmandu valley. Exposing Nepalese expertise in Bioengineering. Internationally awarded with PIARC prize in 2011. Initiation of road widening works in Kathmandu valley. Continuation of Road Sector Development Projects. Continuation of North South Corridor Road Projects. Continuation of Road Improvement Project
28	Department of Roads	2068/9	Till date	Dinker Sharma	New SSRN approved at the cabinet level. Continuation of road widening works in Kathmandu valley Continuation of Road Sector Development Projects. Continuation of North South Corridor Road Projects. Continuation of Road Improvement Project

Organization Chart of Department of Roads



Note: This is a Present Functional Organization of Department of Roads

ANNEX-2

Link Details of SRN

LINK DETAILS

SN	District Name	Link Name	Class	Road Ref No	Link Code	From	To	Length	Pavement Status
1	Jhapa	Kakarbhitta-Charali	NH	H01	H0101	0.00	11.25	11.25	BT
2	Jhapa	Charali-Birtamod	NH	H01	H0102	11.25	17.52	6.27	BT
3	Jhapa	Birtamod-Padajogi (Damak)	NH	H01	H0103	17.52	47.03	29.51	BT
4	Jhapa	Padajogi (Damak)-Ratuwa	NH	H01	H0104	47.03	47.99	0.96	BT
5	Jhapa	Ratuwa-Mawa	NH	H01	H0105	47.99	54.75	6.76	BT
6	Morang	Mawa-Harichamod	NH	H01	H0106	54.75	80.86	26.11	BT
7	Morang	Harichamod-Budhi Khola	NH	H01	H0107	80.86	91.05	10.19	BT
8	Sunsari	Budhi Khola-Itahari	NH	H01	H0108	91.05	92.40	1.35	BT
9	Sunsari	Itahari-Sakhawa Gachhi	NH	H01	H0109	92.40	107.64	15.24	BT
10	Sunsari	Sakhawa Gachhi-Sunsari bridge	NH	H01	H0110	107.64	111.05	3.41	BT
11	Sunsari	Sunsari bridge-Koshi Barrage	NH	H01	H0111	111.05	134.93	23.88	BT
12	Saptari	Koshi Barrage-Bharadaha	NH	H01	H0112	134.93	140.95	6.02	BT
13	Saptari	Bharadaha-Rupni	NH	H01	H0113	140.95	171.74	30.79	BT
14	Saptari	Rupni-Kadmaha	NH	H01	H0114	171.74	192.42	20.68	BT
15	Saptari	Kadmaha-Balan	NH	H01	H0115	192.42	193.97	1.55	BT
16	Siraha	Balan-Padariyachok	NH	H01	H0116	193.97	199.11	5.14	BT
17	Siraha	Padariyachok-Chauharwa	NH	H01	H0117	199.11	218.77	19.66	BT
18	Siraha	Chauharwa-Mirchaiya	NH	H01	H0118	218.77	223.92	5.15	BT
19	Siraha	Mirchaiya-Kamala	NH	H01	H0119	223.92	237.24	13.32	BT
20	Dhanusa	Kamala-Dhalkebar	NH	H01	H0120	237.24	257.81	20.57	BT
21	Dhanusa	Dhalkebar-Ratu	NH	H01	H0121	257.81	265.82	8.01	BT
22	Mahottari	Ratu-Bardibas	NH	H01	H0122	265.82	267.71	1.89	BT
23	Mahottari	Bardibas-Banke	NH	H01	H0123	267.71	283.30	15.59	BT
24	Sarlahi	Banke-Nawalpur	NH	H01	H0124	283.30	300.18	16.88	BT
25	Sarlahi	Nawalpur-Bagmati	NH	H01	H0125	300.18	313.53	13.35	BT
26	Rautahat	Bagmati-Chandranigahapur	NH	H01	H0126	313.53	327.24	13.71	BT
27	Rautahat	Chandranigahapur-Dhansar	NH	H01	H0127	327.24	339.92	12.68	BT
28	Bara	Dhansar-Pathlaiya	NH	H01	H0128	339.92	367.63	27.71	BT
29	Bara	Pathlaiya-Chure	NH	H01	H0129	367.63	386.97	19.34	BT
30	Makwanpur	Chure-Ratmate	NH	H01	H0130	386.97	391.36	4.39	BT
31	Makwanpur	Ratmate-Hetauda	NH	H01	H0131	391.36	396.70	5.34	BT
32	Makwanpur	Hetauda-Sarashwati Khola	NH	H01	H0132	396.70	402.08	5.38	BT
33	Makwanpur	Sarashwati Khola-Lothar	NH	H01	H0133	402.08	437.55	35.47	BT
34	Chitawan	Lothar-Tikauli	NH	H01	H0134	437.55	467.78	30.23	BT
35	Chitawan	Tikauli-Hakimchok	NH	H01	H0135	467.78	469.84	2.06	BT
36	Chitawan	Hakimchok-Narayanghat	NH	H01	H0136	469.84	473.47	3.63	BT
37	Nawalparasi	Narayanghat-Narayani bridge	NH	H01	H0137	473.47	473.61	0.14	BT
38	Nawalparasi	Narayani bridge-Junction (Tiger Mountain)	NH	H01	H0138	473.61	508.87	35.26	BT
39	Nawalparasi	Junction (Tiger Mountain)-Arun Khola	NH	H01	H0139	508.87	523.80	14.93	BT
40	Nawalparasi	Arun Khola-Bardaghat	NH	H01	H0140	523.80	548.67	24.87	BT
41	Nawalparasi	Bardaghat-Sunwal	NH	H01	H0141	548.67	566.13	17.46	BT
42	Nawalparasi	Sunwal-Maha Khola	NH	H01	H0142	566.13	571.94	5.81	BT
43	Rupandehi	Maha Khola-Sukoura	NH	H01	H0143	571.94	583.91	11.97	BT
44	Rupandehi	Sukoura-Butwal (Milanchok)	NH	H01	H0144	583.91	587.27	3.36	BT
45	Rupandehi	Butwal (Milanchok)-Butwal(Mahendrachok)	NH	H01	H0145	587.27	588.67	1.40	BT
46	Rupandehi	Butwal-Bamaha Khola	NH	H01	H0146	588.67	598.21	9.54	BT
47	Rupandehi	Bamaha Khola-Kothi River	NH	H01	H0147	598.21	615.45	17.24	BT
48	Kapilbastu	Kothi River-Jitpur	NH	H01	H0148	615.45	620.37	4.92	BT
49	Kapilbastu	Jitpur-Gorusinge	NH	H01	H0149	620.37	634.97	14.60	BT
50	Kapilbastu	Gorusinge-Chanauta	NH	H01	H0150	634.97	654.24	19.27	BT
51	Kapilbastu	Chanauta-Dhan Khola	NH	H01	H0151	654.24	676.29	22.05	BT
52	Dang	Dhan Khola-Ram Singh Khola	NH	H01	H0152	676.29	683.89	7.60	BT
53	Argakhanchi	Ramsingh Khola-Rapti River	NH	H01	H0153	683.89	688.01	4.12	BT
54	Dang	Rapti River-Bhalubang	NH	H01	H0154	688.01	688.53	0.52	BT
55	Dang	Bhalubang-Lamahi	NH	H01	H0155	688.53	715.55	27.02	BT
56	Dang	Lamahi-Ameliya	NH	H01	H0156	715.55	750.73	35.18	BT
57	Dang	Ameliya-Shiva Khola	NH	H01	H0157	750.73	753.39	2.66	BT

SN	District Name	Link Name	Class	Road Ref No	Link Code	From	To	Length	Pavement Status
58	Banke	Shiva Khola-Khairi Khola	NH	H01	H0158	753.39	789.01	35.62	BT
59	Banke	Khairi Khola-Kohalpur	NH	H01	H0159	789.01	824.28	35.27	BT
60	Banke	Kohalpur-Man River	NH	H01	H0160	824.28	836.41	12.13	BT
61	Bardiya	Man River-Bhuregaon	NH	H01	H0161	836.41	878.04	41.63	BT
62	Bardiya	Bhuregaon-Karnali	NH	H01	H0162	878.04	900.75	22.71	BT
63	Kailali	Karnali-Junga	NH	H01	H0163	900.75	915.23	14.48	BT
64	Kailali	Junga-Sukhad Choraha	NH	H01	H0164	915.23	949.31	34.08	BT
65	Kailali	Sukhad Choraha-Atariya	NH	H01	H0165	949.31	979.10	29.79	BT
66	Kailali	Atariya-Mohana River	NH	H01	H0166	979.10	983.35	4.25	BT
67	Kanchanpur	Mohana River-Daiji	NH	H01	H0167	983.35	1011.51	28.16	BT
68	Kanchanpur	Daiji-Sukhanala	NH	H01	H0168	1011.51	1018.41	6.90	BT
69	Kanchanpur	Sukhanala-Gadda Chauki	NH	H01	H0169	1018.41	1027.67	9.26	BT
70	Parsa	Sirsiya border-Junction, old alignment	NH	H02	H0201	0.00	1.33	1.33	BT
71	Parsa	Junction, old alignment-Gandak Canal	NH	H02	H0202	1.33	8.63	7.30	BT
72	Bara	Gandak Canal-Jitpur	NH	H02	H0203	8.63	21.15	12.52	BT
73	Bara	Jitpur-Pathlaiya	NH	H02	H0204	21.15	28.04	6.89	BT
74	Makwanpur	Hetauda-Samari	NH	H02	H0205	28.04	31.35	3.31	BT
75	Makwanpur	Samari-Bhainse	NH	H02	H0206	31.35	39.25	7.90	BT
76	Makwanpur	Bhainse-Lamidanda	NH	H02	H0207	39.25	57.36	18.11	BT
77	Makwanpur	Lamidanda-Simbhanjyang	NH	H02	H0208	57.36	80.01	22.65	BT
78	Makwanpur	Simbhanjyang-Palung	NH	H02	H0209	80.01	94.85	14.84	BT
79	Makwanpur	Palung-Tistung	NH	H02	H0210	94.85	99.63	4.78	BT
80	Makwanpur	Tistung-Sopyarg District border	NH	H02	H0211	99.63	117.43	17.80	BT
81	Dhading	Sopyarg District border-Naubise	NH	H02	H0212	117.43	134.54	17.11	BT
82	Dhading	Naubise-Peepalmod	NH	H02	H0213	134.54	145.20	10.66	BT
83	Kathmandu	Peepalmod-Nagdhunga	NH	H02	H0214	145.20	147.09	1.89	BT
84	Kathmandu	Nagdhunga-Kalanki (Ring road)	NH	H02	H0215	147.09	156.20	9.11	BT
85	Kathmandu	Kalanki (Ring road)-Tripureswor	NH	H02	H0216	156.20	159.66	3.46	BT
86	Kathmandu	Maitighar-Tinkune	NH	H03	H0301	0.00	2.74	2.74	BT
87	Kathmandu	Tinkune-Koteshwar	NH	H03	H0302	2.74	3.61	0.87	BT
88	Kathmandu	Koteshwar-Manohara bridge	NH	H03	H0303	3.61	4.39	0.78	BT
89	Bhaktapur	Manohara bridge-Sallaghari	NH	H03	H0304	4.39	9.73	5.34	BT
90	Bhaktapur	Sallaghari-Hanumante Culvert	NH	H03	H0305	9.73	13.37	3.64	BT
91	Bhaktapur	Hanumante Culvert-Sanga	NH	H03	H0306	13.37	18.51	5.14	BT
92	Kavrepalanchok	Sanga-Punyamata bridge	NH	H03	H0307	18.51	22.69	4.18	BT
93	Kavrepalanchok	Punyamata bridge-Banepa	NH	H03	H0308	22.69	23.65	0.96	BT
94	Kavrepalanchok	Banepa-Chalnedhunga	NH	H03	H0309	23.65	25.56	1.91	BT
95	Kavrepalanchok	Chalnedhunga-Khawa	NH	H03	H0310	25.56	31.43	5.87	BT
96	Kavrepalanchok	Khawa-Lamidanda	NH	H03	H0311	31.43	44.75	13.32	BT
97	Kavrepalanchok	Lamidanda-Dolalghat	NH	H03	H0312	44.75	56.90	12.15	BT
98	Sindhupalchok	Dolalghat-Lamosangu	NH	H03	H0313	56.90	76.14	19.24	BT
99	Sindhupalchok	Lamosangu-Barabise	NH	H03	H0314	76.14	86.62	10.48	BT
100	Sindhupalchok	Barabise-Kodari	NH	H03	H0315	86.62	110.83	24.21	BT
101	Sindhupalchok	Barabise-Kodari	NH	H03	H0315	110.83	112.83	2.00	GR
102	Dhading	Naubise-Galchhi	NH	H04	H0401	0.00	22.06	22.06	BT
103	Dhading	Galchhi-Junction Trisuli bridge	NH	H04	H0402	22.06	42.54	20.48	BT
104	Dhading	Junction Trisuli bridge-Mawa Khola	NH	H04	H0403	42.54	66.61	24.07	BT
105	Chitawan	Mawa Khola-Mugling	NH	H04	H0404	66.61	82.96	16.35	BT
106	Chitawan	Mugling-Mungling bridge	NH	H04	H0405	82.96	83.29	0.33	BT
107	Tanahu	Mungling bridge-Ambukhaireni	NH	H04	H0406	83.29	90.67	7.38	BT
108	Tanahu	Anbukhaireni-Dumre	NH	H04	H0407	90.67	107.32	16.65	BT
109	Tanahu	Dumre-Muse Khola	NH	H04	H0408	107.32	121.43	14.11	BT
110	Tanahu	Muse Khola-Byas municipality boundary	NH	H04	H0409	121.43	126.75	5.32	BT
111	Tanahu	Byas municipality boundary-Kotre	NH	H04	H0410	126.75	154.54	27.79	BT
112	Kaski	Kotre-Bijayapur Khola	NH	H04	H0411	154.54	168.58	14.04	BT
113	Kaski	Bijayapur Khola-Prithvi Chok	NH	H04	H0412	168.58	173.43	4.85	BT
114	Chitawan	Narayanghat-Anptari	NH	H05	H0501	0.00	2.45	2.45	BT
115	Chitawan	Anptari-Ramnagar	NH	H05	H0502	2.45	6.00	3.55	BT

SN	District Name	Link Name	Class	Road Ref No	Link Code	From	To	Length	Pavement Status
116	Chitawan	Ramnagar-Mugling	NH	H05	H0503	6.00	36.16	30.16	BT
117	Mahottari	Bhittamod-Jaleswar municipality boundary	NH	H06	H0601	0.00	5.61	5.61	BT
118	Mahottari	Jaleswor municipality boundary-Dhudhmadi bridge	NH	H06	H0602	5.61	17.81	12.20	BT
119	Dhanusa	Dhudhmadi bridge-Janakpur municipality boundary	NH	H06	H0603	17.81	23.84	6.03	BT
120	Dhanusa	Janakpur municipality boundary-Dhalkebar	NH	H06	H0604	23.84	48.87	25.03	BT
121	Mahottari	Bardibas-Rato River	NH	H06	H0605	48.87	61.37	12.50	BT
122	Dhanusa	Rato River-Chure Temple	NH	H06	H0606	61.37	64.87	3.50	BT
123	Sindhuli	Chure Temple-Sindhuli	NH	H06	H0607	64.87	80.17	15.30	BT
124	Sindhuli	Chure Temple-Sindhuli	NH	H06	H0607	80.17	86.17	6.00	GR
125	Sindhuli	Sindhuli-Khurkot	NH	H06	H0608	86.17	121.97	35.80	BT
126	Sindhuli	Khurkot-Barkhe Khola	NH	H06	H0609	121.97	127.97	6.00	BT
127	Sindhuli	Khurkot-Barkhe Khola	NH	H06	H0609	127.97	139.97	12.00	ER
128	Sindhuli	Khurkot-Barkhe Khola	NH	H06	H0609	139.97	141.97	2.00	BT
129	Sindhuli	Khurkot-Barkhe Khola	NH	H06	H0609	141.97	153.47	11.50	ER
130	Sindhuli	Khurkot-Barkhe Khola	NH	H06	H0609	153.47	161.87	8.40	BT
131	Kavrepalanchok	Barkhe Khola-Dhulikhel	NH	H06	H0610	161.87	208.87	47.00	BT
132	Jhapa	Kechna (IB)-Kechna village	NH	H07	H0701	0.00	3.00	3.00	GR
133	Jhapa	Kechna village-Jhapa Chok	NH	H07	H0702	3.00	24.68	21.68	GR
134	Jhapa	Jhapa Chok-Bhaire Chok	NH	H07	H0703	24.68	28.85	4.17	BT
135	Jhapa	Bhaire Chok-Charali	NH	H07	H0704	28.85	39.22	10.37	BT
136	Jhapa	Charali-Chihanedanda	NH	H07	H0705	39.22	56.00	16.78	BT
137	Ilam	Chihanedanda-Fikkal	NH	H07	H0706	56.00	79.55	23.55	BT
138	Ilam	Fikkal-Mai Khola	NH	H07	H0707	79.55	104.14	24.59	BT
139	Ilam	Mai Khola-Chureghanti	NH	H07	H0708	104.14	118.56	14.42	BT
140	Ilam	Chureghanti-Ranke	NH	H07	H0709	118.56	150.70	32.14	BT
141	Panchthar	Ranke-Phidim	NH	H07	H0710	150.70	181.56	30.86	BT
142	Panchthar	Phidim-Gopetar	NH	H07	H0711	181.56	216.63	35.07	BT
143	Panchthar	Gopetar-Kabeli	NH	H07	H0712	216.63	242.56	25.93	BT
144	Taplejung	Kabeli-Taplejung	NH	H07	H0713	242.56	268.06	25.50	BT
145	Taplejung	Taplejung-Gharila (IB)	NH	H07	H0714	268.06	272.06	4.00	BT
146	Taplejung	Taplejung-Gharila (IB)	NH	H07	H0714	272.06	289.06	17.00	ER
147	Taplejung	Taplejung-Gharila (IB)	NH	H07	H0714	289.06	391.06	102.00	PL
148	Morang	Rani (IB)-Kanchanbari	NH	H08	H0801	0.00	13.37	13.37	BT
149	Morang	Kanchanbari-Duhabi	NH	H08	H0802	13.37	18.04	4.67	BT
150	Sunsari	Duhabi-Itahari	NH	H08	H0803	18.04	29.65	11.61	BT
151	Sunsari	Itahari-Seuti bridge	NH	H08	H0804	29.65	40.74	11.09	BT
152	Sunsari	Seuti bridge-Base Camp	NH	H08	H0805	40.74	50.87	10.13	BT
153	Sunsari	Base Camp-Bhendetar	NH	H08	H0806	50.87	63.19	12.32	BT
154	Dhankuta	Bhendetar-Mulghat	NH	H08	H0807	63.19	81.57	18.38	BT
155	Dhankuta	Mulghat-Patle Khola	NH	H08	H0808	81.57	93.15	11.58	BT
156	Dhankuta	Patle Khola-Hile	NH	H08	H0809	93.15	111.46	18.31	BT
157	Saptari	Kadmaha Chok-Siswari bridge	NH	H09	H0901	0.00	12.11	12.11	BT
158	Udayapur	Siswari bridge-Cement Factory	NH	H09	H0902	12.11	20.73	8.62	BT
159	Udayapur	Cement Factory-Gaighat	NH	H09	H0903	20.73	27.97	7.24	BT
160	Udayapur	Gaighat-Mathillo Malbanse(Sagarmatha Lokmarg)	NH	H09	H0904	27.97	33.97	6.00	BT
161	Udayapur	Gaighat-Mathillo Malbanse(Sagarmatha Lokmarg)	NH	H09	H0904	33.97	57.97	24.00	GR
162	Udayapur	Gaighat-Mathillo Malbanse(Sagarmatha Lokmarg)	NH	H09	H0904	57.97	81.97	24.00	ER
163	Udayapur	Mathillo Malbanse-Udayapur district border(Sagarmatha Lokmarg)	NH	H09	H0905	81.97	101.97	20.00	UC
164	Khotang	Udayapur district border-Diktel (Sagarmatha Lokmarg)	NH	H09	H0906	101.97	178.97	77.00	ER
165	Rupandehi	Belhiya (IB)-Sidarthanagar	NH	H10	H1001	0.00	6.08	6.08	BT
166	Rupandehi	Sidarthanagar-Butwal municipality boundary	NH	H10	H1002	6.08	22.11	16.03	BT
167	Rupandehi	Butwal municipality boundary-Milanchok	NH	H10	H1003	22.11	24.10	1.99	BT
168	Rupandehi	Mahendra park-Chidiya Khola	NH	H10	H1004	24.10	26.84	2.74	BT
169	Palpa	Chidiya Khola-Banstari	NH	H10	H1005	26.84	54.23	27.39	BT
170	Palpa	Banstari-Bartung	NH	H10	H1006	54.23	59.52	5.29	BT

SN	District Name	Link Name	Class	Road Ref No	Link Code	From	To	Length	Pavement Status
171	Palpa	Bartung-Tansen municipality boundary	NH	H10	H1007	59.52	60.62	1.10	BT
172	Palpa	Tansen municipality boundary-Kaligandaki	NH	H10	H1008	60.62	85.77	25.15	BT
173	Syangja	Kaligandaki-Waling	NH	H10	H1009	85.77	116.48	30.71	BT
174	Syangja	Waling-Syangja	NH	H10	H1010	116.48	144.10	27.62	BT
175	Syangja	Syangja-Kubinde	NH	H10	H1011	144.10	164.71	20.61	BT
176	Kaski	Kubinde-Pokhara municipality boundary	NH	H10	H1012	164.71	176.80	12.09	BT
177	Kaski	Pokhara municipality boundary-Prithvichok	NH	H10	H1013	176.80	181.22	4.42	BT
178	Dang	Ameliya-Tulsipur municipality boundary	NH	H11	H1101	0.00	27.63	27.63	BT
179	Dang	Tulsipur municipality boundary-Birendrachok	NH	H11	H1102	27.63	29.62	1.99	BT
180	Dang	Birendrachok-Lauri Khola	NH	H11	H1103	29.62	35.62	6.00	BT
181	Dang	Lauri Khola-Choroadanda, Dang district border	NH	H11	H1104	35.62	45.62	10.00	BT
182	Salyan	Choroadanda, Dang district border-Junction Salyan	NH	H11	H1105	45.62	49.62	4.00	BT
183	Salyan	Choroadanda, Dang district border-Junction Salyan	NH	H11	H1105	49.62	71.63	22.01	BT
184	Salyan	Choroadanda, Dang district border-Junction Salyan	NH	H11	H1105	71.63	82.78	11.15	BT
185	Salyan	Junction Salyan road, Sitalpati-Patalechaour	NH	H11	H1106	82.78	129.44	46.66	GR
186	Salyan	Patalechaour-Khaula Pass, Salyan district border	NH	H11	H1107	129.44	137.28	7.84	GR
187	Rukum	Khaula Pass, Salyan district border-Musikot	NH	H11	H1108	137.28	157.28	20.00	GR
188	Rukum	Khaula Pass, Salyan district border-Musikot	NH	H11	H1108	157.28	168.68	11.40	ER
189	Banke	Jamuniya (IB)-Campus	NH	H12	H1201	0.00	2.01	2.01	BT
190	Banke	Campus-Dhamboji	NH	H12	H1202	2.01	6.03	4.02	BT
191	Banke	Dhamboji-Nepalganj municipality boundary	NH	H12	H1203	6.03	7.31	1.28	BT
192	Banke	Nepalganj municipality boundary-Kohalpur	NH	H12	H1204	7.31	22.33	15.02	BT
193	Banke	Kohalpur-Deurali	NH	H12	H1205	22.33	45.39	23.06	BT
194	Bardiya	Deurali-Harre	NH	H12	H1206	45.39	68.94	23.55	BT
195	Surkhet	Harre-Chhinchu	NH	H12	H1207	68.94	80.69	11.75	BT
196	Surkhet	Chhinchu-Newari Khola	NH	H12	H1208	80.69	106.09	25.40	BT
197	Surkhet	Newari Khola-Bangesimal	NH	H12	H1209	106.09	113.08	6.99	BT
198	Surkhet	Bangesimal-Baddichaur-Upallo Syaule	NH	H13	H1301	0.00	46.00	46.00	BT
199	Dailekh	Upallo Syaule-Sain	NH	H13	H1302	46.00	54.00	8.00	BT
200	Dailekh	Upallo Syaule-Sain	NH	H13	H1302	54.00	55.45	1.45	GR
201	Dailekh	Upallo Syaule-Sain	NH	H13	H1302	55.45	56.36	0.91	BT
202	Dailekh	Upallo Syaule-Sain	NH	H13	H1302	56.36	62.06	5.70	GR
203	Dailekh	Upallo Syaule-Sain	NH	H13	H1302	62.06	64.50	2.44	BT
204	Dailekh	Upallo Syaule-Sain	NH	H13	H1302	64.50	65.50	1.00	GR
205	Dailekh	Upallo Syaule-Sain	NH	H13	H1302	65.50	68.42	2.92	BT
206	Dailekh	Upallo Syaule-Sain	NH	H13	H1302	68.42	69.50	1.08	GR
207	Dailekh	Upallo Syaule-Sain	NH	H13	H1302	69.50	71.30	1.80	BT
208	Dailekh	Upallo Syaule-Sain	NH	H13	H1302	71.30	72.80	1.50	GR
209	Dailekh	Upallo Syaule-Sain	NH	H13	H1302	72.80	78.62	5.82	BT
210	Dailekh	Upallo Syaule-Sain	NH	H13	H1302	78.62	79.10	0.48	GR
211	Dailekh	Upallo Syaule-Sain	NH	H13	H1302	79.10	81.17	2.07	BT
212	Dailekh	Upallo Syaule-Sain	NH	H13	H1302	81.17	83.80	2.63	GR
213	Dailekh	Upallo Syaule-Sain	NH	H13	H1302	83.80	85.35	1.55	BT
214	Dailekh	Upallo Syaule-Sain	NH	H13	H1302	85.35	89.20	3.85	GR
215	Dailekh	Upallo Syaule-Sain	NH	H13	H1302	89.20	89.70	0.50	BT
216	Dailekh	Upallo Syaule-Sain	NH	H13	H1302	89.70	91.30	1.60	GR
217	Dailekh	Upallo Syaule-Sain	NH	H13	H1302	91.30	95.30	4.00	BT
218	Dailekh	Upallo Syaule-Sain	NH	H13	H1302	95.30	96.07	0.77	GR
219	Dailekh	Upallo Syaule-Sain	NH	H13	H1302	96.07	114.00	17.93	BT
220	Dailekh	Sain-Siradi	NH	H13	H1303	114.00	127.30	13.30	BT
221	Dailekh	Sain-Siradi	NH	H13	H1303	127.30	127.50	0.20	GR
222	Dailekh	Sain-Siradi	NH	H13	H1303	127.50	128.20	0.70	BT
223	Dailekh	Sain-Siradi	NH	H13	H1303	128.20	128.70	0.50	GR
224	Dailekh	Sain-Siradi	NH	H13	H1303	128.70	129.44	0.74	BT
225	Dailekh	Sain-Siradi	NH	H13	H1303	129.44	132.00	2.56	ER
226	Kailot	Siradi-Sherighat-Manma	NH	H13	H1304	132.00	152.00	20.00	ER

SN	District Name	Link Name	Class	Road Ref No	Link Code	From	To	Length	Pavement Status
227	Kailikot	Manma-Nagma	NH	H13	H1305	152.00	202.00	50.00	ER
228	Jumla	Nagma-Jumla Khalanga	NH	H13	H1306	202.00	233.00	31.00	ER
229	Kailali	Mohana bridge (IB)-Boradandi	NH	H14	H1401	0.00	6.23	6.23	BT
230	Kailali	Boradandi-Atariya	NH	H14	H1402	6.23	14.55	8.32	BT
231	Kailali	Atariya-Faltunde	NH	H14	H1403	14.55	68.18	53.63	BT
232	Doti	Faltunde-Budar	NH	H14	H1404	68.18	79.56	11.38	BT
233	Doti	Budar-Gairha	NH	H14	H1405	79.56	101.64	22.08	BT
234	Dadeldhura	Gairha-Syaule	NH	H14	H1406	101.64	131.38	29.74	BT
235	Dadeldhura	Syaule-Anarkholi	NH	H14	H1407	131.38	153.76	22.38	BT
236	Baitadi	Anarkholi-Khodpe	NH	H14	H1408	153.76	160.94	7.18	BT
237	Baitadi	Khodpe-Patan	NH	H14	H1409	160.94	184.17	23.23	BT
238	Baitadi	Patan-Satbhanj	NH	H14	H1410	184.17	200.76	16.59	BT
239	Baitadi	Satbanj-Gokuleswor	NH	H14	H1411	200.76	239.04	38.28	BT
240	Baitadi	Satbanj-Gokuleswor	NH	H14	H1411	239.04	253.73	14.69	BT
241	Darchula	Gokuleswor-Darchula	NH	H14	H1412	253.73	263.73	10.00	BT
242	Darchula	Gokuleswor-Darchula	NH	H14	H1412	263.73	313.73	50.00	GR
243	Darchula	Gokuleswor-Darchula	NH	H14	H1412	313.73	325.15	11.42	ER
244	Darchula	Darchula-Tinkar (IB)	NH	H14	H1413	325.15	332.15	7.00	ER
245	Darchula	Darchula-Tinkar (IB)	NH	H14	H1413	332.15	340.15	8.00	UC
246	Darchula	Darchula-Tinkar (IB)	NH	H14	H1413	340.15	415.15	75.00	PL
247	Dadeldhura	Syaule Bazar-Korayal	NH	H15	H1501	0.00	24.96	24.96	BT
248	Doti	Koryal-Samuha Gad	NH	H15	H1502	24.96	49.69	24.73	BT
249	Doti	Samuha Gad-Junction, Sanfe road	NH	H15	H1503	49.69	65.96	16.27	BT
250	Kathmandu	Manohara River - Koteswor (H03) KTM Ringroad)	NH	H16	H1601	0.00	1.00	1.00	BT
251	Kathmandu	Tinkune - Sinamangal - Gaushala (KTM Ringroad)	NH	H16	H1602	1.00	5.00	4.00	BT
252	Kathmandu	Gaushala - Mitrapark (KTM Ringroad)	NH	H16	H1603	5.00	6.00	1.00	BT
253	Kathmandu	Mitrapark - Chabahil (KTM Ringroad)	NH	H16	H1604	6.00	6.50	0.50	BT
254	Kathmandu	Chabahil - Sankhapark (KTM Ringroad)	NH	H16	H1605	6.50	8.50	2.00	BT
255	Kathmandu	Sankhapark - Maharajganj (KTM Ringroad)	NH	H16	H1606	8.50	9.50	1.00	BT
256	Kathmandu	Maharajganj - Balaju Bypass Junction (KTM Ringroad)	NH	H16	H1607	9.50	13.00	3.50	BT
257	Kathmandu	Balaju Junction - Banasthali - Swoyambhu (KTM Ringroad)	NH	H16	H1608	13.00	15.00	2.00	BT
258	Kathmandu	Swoyambhu - Kalanki (KTM Ringroad)	NH	H16	H1609	15.00	18.00	3.00	BT
259	Kathmandu	Kalanki - Balkhu (KTM Ringroad)	NH	H16	H1610	18.00	21.00	3.00	BT
260	Lalitpur	Balkhu - Ekantakuna (KTM Ringroad)	NH	H16	H1611	21.00	23.00	2.00	BT
261	Lalitpur	Ekantakuna- Kusanti - Satdobato (KTM Ringroad)	NH	H16	H1612	23.00	25.00	2.00	BT
262	Lalitpur	Satdobato- Gwarko (KTM Ringroad)	NH	H16	H1613	25.00	26.50	1.50	BT
263	Lalitpur	Gwarko-Manohara River(Balkumari)(KTM Ringroad)	NH	H16	H1614	26.50	28.00	1.50	BT
264	Jhapa	Bhadrapur-Ratuwa(Postal)	PR	H17	H1701	0.00	15.00	15.00	GR
265	Jhapa	Bhadrapur-Ratuwa(Postal)	PR	H17	H1701	15.00	32.00	17.00	ER
266	Jhapa	Bhadrapur-Ratuwa(Postal)	PR	H17	H1701	32.00	42.00	10.00	UC
267	Jhapa	Bhadrapur-Ratuwa(Postal)	PR	H17	H1701	42.00	48.00	6.00	PL
268	Morang	Ratuwa-Rangeli(Postal)	PR	H17	H1702	48.00	69.00	21.00	BT
269	Morang	Biratnagar-Bhimpur (Keshalya River) (Postal)	PR	H17	H1703	69.00	72.00	3.00	GR
270	Sunsari	Bhimpur(Keshalya River)-Dewangunj (Postal)	PR	H17	H1704	72.00	81.00	9.00	GR
271	Sunsari	Bhimpur(Keshalya River)-Dewangunj (Postal)	PR	H17	H1704	81.00	82.00	1.00	UC
272	Sunsari	Bhimpur(Keshalya River)-Dewangunj (Postal)	PR	H17	H1704	82.00	83.00	1.00	PL
273	Sunsari	Harinagara-Jhabartol-Custom-Laukahi (Postal)	PR	H17	H1705	83.00	86.00	3.00	GR
274	Sunsari	Harinagara-Jhabartol-Custom-Laukahi (Postal)	PR	H17	H1705	86.00	96.00	10.00	ER
275	Sunsari	Harinagara-Jhabartol-Custom-Laukahi (Postal)	PR	H17	H1705	96.00	101.00	5.00	UC
276	Sunsari	Harinagara-Jhabartol-Custom-Laukahi (Postal)	PR	H17	H1705	101.00	103.00	2.00	PL
277	Saptari	Rajbiraj-Balan River (Postal)	PR	H17	H1706	103.00	105.00	2.00	BT
278	Saptari	Rajbiraj-Balan River (Postal)	PR	H17	H1706	105.00	119.00	14.00	GR
279	Saptari	Rajbiraj-Balan River (Postal)	PR	H17	H1706	119.00	128.00	9.00	ER

SN	District Name	Link Name	Class	Road Ref No	Link Code	From	To	Length	Pavement Status
280	Siraha	Balan River-Kamala River (Postal)	PR	H17	H1707	128.00	147.00	19.00	GR
281	Siraha	Balan River-Kamala River (Postal)	PR	H17	H1707	147.00	161.00	14.00	ER
282	Dhanusa	Kamala River-Yogyiyada (Postal)	PR	H17	H1708	161.00	163.00	2.00	PL
283	Dhanusa	Kamala River-Yogyiyada (Postal)	PR	H17	H1708	163.00	166.00	3.00	UC
284	Dhanusa	Kamala River-Yogyiyada (Postal)	PR	H17	H1708	166.00	175.00	9.00	ER
285	Dhanusa	Yogyiyada-Janakpur (Postal)	PR	H17	H1709	175.00	179.00	4.00	BT
286	Dhanusa	Yogyiyada-Janakpur (Postal)	PR	H17	H1709	179.00	188.00	9.00	GR
287	Dhanusa	Yogyiyada-Janakpur (Postal)	PR	H17	H1709	188.00	190.00	2.00	ER
288	Dhanusa	Janakpur-Birendrachok (Postal)	PR	H17	H1710	190.00	191.00	1.00	BT
289	Mahottari	Jaleshor-Samsi-Hardi Khola (Sitapur) (Postal)	PR	H17	H1711	191.00	195.00	4.00	BT
290	Mahottari	Jaleshor-Samsi-Hardi Khola (Sitapur) (Postal)	PR	H17	H1711	195.00	215.00	20.00	GR
291	Mahottari	Jaleshor-Samsi-Hardi Khola (Sitapur) (Postal)	PR	H17	H1711	215.00	218.50	3.50	ER
292	Mahottari	Jaleshor-Samsi-Hardi Khola (Sitapur) (Postal)	PR	H17	H1711	218.50	219.00	0.50	PL
293	Sarlahi	Hardi Khola (Sitapur)-Malangawa (Postal)	PR	H17	H1712	219.00	233.50	14.50	GR
294	Sarlahi	Malangawa-Kharahiyatol (Postal)	PR	H17	H1713	233.50	249.00	15.50	GR
295	Sarlahi	Malangawa-Kharahiyatol (Postal)	PR	H17	H1713	249.00	252.00	3.00	ER
296	Sarlahi	Kharahiyatol-Gadahiya (Bagamati River) (Postal)	PR	H17	H1714	252.00	255.00	3.00	ER
297	Sarlahi	Kharahiyatol-Gadahiya (Bagamati River) (Postal)	PR	H17	H1714	255.00	255.50	0.50	UC
298	Sarlahi	Kharahiyatol-Gadahiya (Bagamati River) (Postal)	PR	H17	H1714	255.50	260.00	4.50	PL
299	Rautahat	Gadahiya(Bagamati River)-Sirsiya (Postal)	PR	H17	H1715	260.00	266.00	6.00	PL
300	Rautahat	Sirsiya-Gaur (Postal)	PR	H17	H1716	266.00	269.00	3.00	GR
301	Rautahat	Gaur-Aruwa river-Kachorwa (Postal)	PR	H17	H1717	269.00	275.00	6.00	GR
302	Rautahat	Gaur-Aruwa river-Kachorwa (Postal)	PR	H17	H1717	275.00	282.00	7.00	ER
303	Rautahat	Gaur-Aruwa river-Kachorwa (Postal)	PR	H17	H1717	282.00	293.00	11.00	UC
304	Bara	Kachorwa-Kalaiya (Postal)	PR	H17	H1718	293.00	296.00	3.00	BT
305	Bara	Kachorwa-Kalaiya (Postal)	PR	H17	H1718	296.00	310.00	14.00	GR
306	Bara	Kachorwa-Kalaiya (Postal)	PR	H17	H1718	310.00	315.00	5.00	ER
307	Bara	Kachorwa-Kalaiya (Postal)	PR	H17	H1718	315.00	316.00	1.00	UC
308	Bara	Kachorwa-Kalaiya (Postal)	PR	H17	H1718	316.00	318.00	2.00	PL
309	Parsa	Birgunj(Murli)-Basantapur (Postal)	PR	H17	H1719	318.00	327.00	9.00	BT
310	Parsa	Birgunj(Murli)-Basantapur (Postal)	PR	H17	H1719	327.00	340.00	13.00	GR
311	Parsa	Birgunj(Murli)-Basantapur (Postal)	PR	H17	H1719	340.00	342.00	2.00	ER
312	Parsa	Birgunj(Murli)-Basantapur (Postal)	PR	H17	H1719	342.00	343.00	1.00	UC
313	Parsa	Basantapur-Amuwapost(Near Thori) (Postal)	PR	H17	H1720	343.00	348.00	5.00	UC
314	Parsa	Basantapur-Amuwapost(Near Thori) (Postal)	PR	H17	H1720	348.00	378.00	30.00	PL
315	Chitawan	Amuwapost(Thori)-Madi-Jagatpur-Bharatpur(MRM)(Postal)	PR	H17	H1721	378.00	396.00	18.00	BT
316	Chitawan	Amuwapost(Thori)-Madi-Jagatpur-Bharatpur(MRM)(Postal)	PR	H17	H1721	396.00	439.00	43.00	GR
317	Nawalparasi	Narayanchok - Parasi (Postal)	PR	H17	H1722	439.00	451.00	12.00	GR
318	Nawalparasi	Narayanchok - Parasi (Postal)	PR	H17	H1722	451.00	453.00	2.00	ER
319	Kapilbastu	Taulihawa-Bahadurgunj (Postal)	PR	H17	H1723	453.00	474.00	21.00	GR
320	Kapilbastu	Krishnanagar-Chirai Naka (Chhotabagwanpur) (Postal)	PR	H17	H1724	474.00	479.50	5.50	GR
321	Kapilbastu	Krishnanagar-Chirai Naka (Chhotabagwanpur) (Postal)	PR	H17	H1724	479.50	489.50	10.00	ER
322	Kapilbastu	Krishnanagar-Chirai Naka (Chhotabagwanpur) (Postal)	PR	H17	H1724	489.50	499.50	10.00	UC
323	Kapilbastu	Chirai Naka (Chhotabagwanpur)-Dhan Khola(MRM) (Postal)	PR	H17	H1725	499.50	507.50	8.00	PL
324	Dang	Kalakanti (MRM)-Gadhawa-Rajpur (Postal)	PR	H17	H1726	507.50	557.50	50.00	GR
325	Dang	Kalakanti (MRM)-Gadhawa-Rajpur (Postal)	PR	H17	H1726	557.50	562.50	5.00	ER
326	Dang	Kalakanti (MRM)-Gadhawa-Rajpur (Postal)	PR	H17	H1726	562.50	563.50	1.00	UC
327	Dang	Rajapur-Sikta-Hardawa (MRM) (Postal)	PR	H17	H1727	563.50	565.50	2.00	PL
328	Banke	MRM (Mathebans)-Madui-Dudhuwa-Kamdi (Postal)	PR	H17	H1728	565.50	575.50	10.00	GR
329	Banke	MRM (Mathebans)-Madui-Dudhuwa-Kamdi (Postal)	PR	H17	H1728	575.50	598.50	23.00	ER
330	Banke	MRM (Mathebans)-Madui-Dudhuwa-Kamdi (Postal)	PR	H17	H1728	598.50	600.50	2.00	UC
331	Banke	MRM (Mathebans)-Madui-Dudhuwa-Kamdi (Postal)	PR	H17	H1728	600.50	602.50	2.00	PL

SN	District Name	Link Name	Class	Road Ref No	Link Code	From	To	Length	Pavement Status
332	Bardiya	Beluwa-Rajapur (Postal)	PR	H17	H1729	602.50	613.50	11.00	GR
333	Bardiya	Beluwa-Rajapur (Postal)	PR	H17	H1729	613.50	614.50	1.00	ER
334	Bardiya	Beluwa-Rajapur (Postal)	PR	H17	H1729	614.50	618.50	4.00	PL
335	Kailali	Satti-Lalbojhi-Hasulia (Postal)	PR	H17	H1730	618.50	641.50	23.00	UC
336	Kailali	Satti-Lalbojhi-Hasulia (Postal)	PR	H17	H1730	641.50	645.50	4.00	PL
337	Kailali	Hasulia-Dhangadhi (Postal)	PR	H17	H1731	645.50	651.20	5.70	BT
338	Kailali	Hasulia-Dhangadhi (Postal)	PR	H17	H1731	651.20	667.20	16.00	GR
339	Kailali	Hasulia-Dhangadhi (Postal)	PR	H17	H1731	667.20	681.20	14.00	ER
340	Kailali	Hasulia-Dhangadhi (Postal)	PR	H17	H1731	681.20	683.20	2.00	UC
341	Kanchanpur	Dhangadhi-Beldandi Chok (Postal)	PR	H17	H1732	683.20	725.20	42.00	GR
342	Kanchanpur	Beldandichok - Daiji (Postal)	PR	H17	H1733	725.20	735.20	10.00	GR
343	Kanchanpur	Beldandichok - Daiji (Postal)	PR	H17	H1733	735.20	741.70	6.50	ER
344	Kanchanpur	Beldandichok - Daiji (Postal)	PR	H17	H1733	741.70	742.20	0.50	UC
345	Kanchanpur	Beldandichok - Daiji (Postal)	PR	H17	H1733	742.20	745.20	3.00	PL
346	Panchthar	Chiyobhanjyang(IB)-Ganesh Chowk (Midhill)	MH	H18	H1801	0.00	59.00	59.00	ER
347	Panchthar	Jorsal-Tamor River(District Border) (Midhill)	MH	H18	H1802	59.00	66.40	7.40	ER
348	Terhathum	Tamor River-Sankranti (Midhill)	MH	H18	H1803	66.40	93.00	26.60	ER
349	Terhathum	Sankranti-Myaglung (Midhill)	MH	H18	H1804	93.00	161.00	68.00	ER
350	Dhankuta	Hile-Leguwaghat (Midhill)	MH	H18	H1805	161.00	170.50	9.50	BT
351	Dhankuta	Hile-Leguwaghat (Midhill)	MH	H18	H1805	170.50	187.00	16.50	GR
352	Bhojpur	Leguwaghat-Bhojpur (Midhill)	MH	H18	H1806	187.00	194.50	7.50	GR
353	Bhojpur	Leguwaghat-Bhojpur (Midhill)	MH	H18	H1806	194.50	253.00	58.50	ER
354	Bhojpur	Bhojpur-Nagi (Midhill)	MH	H18	H1807	253.00	303.00	50.00	ER
355	Khotang	Nagi-Diktel (Midhill)	MH	H18	H1808	303.00	343.00	40.00	ER
356	Khotang	Diktel-Bijule Bhanjyang (Midhill)	MH	H18	H1809	343.00	368.07	25.07	ER
357	Khotang	Bijule Bhanjyang-Jayaramtar(District Border) (Midhill)	MH	H18	H1810	368.07	390.30	22.23	ER
358	Khotang	Bijule Bhanjyang-Jayaramtar(District Border) (Midhill)	MH	H18	H1810	390.30	395.30	5.00	BT
359	Khotang	Bijule Bhanjyang-Jayaramtar(District Border) (Midhill)	MH	H18	H1810	395.30	402.30	7.00	ER
360	Khotang	Bijule Bhanjyang-Jayaramtar(District Border) (Midhill)	MH	H18	H1810	402.30	410.30	8.00	BT
361	Khotang	Bijule Bhanjyang-Jayaramtar(District Border) (Midhill)	MH	H18	H1810	410.30	412.30	2.00	ER
362	Okhaldhunga	Jayaramtar(District Border)-Hilepani (Midhill)	MH	H18	H1811	412.30	417.30	5.00	GR
363	Okhaldhunga	Jayaramtar(District Border)-Hilepani (Midhill)	MH	H18	H1811	417.30	418.30	1.00	BT
364	Okhaldhunga	Jayaramtar(District Border)-Hilepani (Midhill)	MH	H18	H1811	418.30	419.30	1.00	GR
365	Okhaldhunga	Jayaramtar(District Border)-Hilepani (Midhill)	MH	H18	H1811	419.30	421.09	1.79	BT
366	Okhaldhunga	Jayaramtar(District Border)-Ghurmi(District Border) (Midhill)	MH	H18	H1812	421.09	427.30	6.21	BT
367	Udayapur	Ghurmi(District Border)-Patitar(District Border) (Midhill)	MH	H18	H1813	427.30	429.30	2.00	ER
368	Sindhuli	Patitar(District Border)-Khurkot (Midhill)	MH	H18	H1814	429.30	490.30	61.00	ER
369	Baglung	Baglung-Wami Taksar-Burtibang (Midhill)	MH	H18	H1815	490.30	579.30	89.00	ER
370	Baglung	Burtibang-Partihalna(District Border)	MH	H18	H1816	579.30	632.30	53.00	ER
371	Baglung	Burtibang-Partihalna(District Border)	MH	H18	H1816	632.30	639.30	7.00	UC
372	Rukum	Partihalna(District Border)-Gothban	MH	H18	H1817	639.30	694.30	55.00	ER
373	Rukum	Gothban-Musikot	MH	H18	H1818	694.30	744.30	50.00	ER
374	Rukum	Musikot-Chourjhari-Kudu(District Border) (Midhill)	MH	H18	H1819	744.30	789.30	45.00	ER
375	Jajarkot	Kudu(District Border)-Marpin (District Border)	MH	H18	H1820	789.30	834.30	45.00	ER
376	Jajarkot	Kudu(District Border)-Marpin (District Border)	MH	H18	H1820	834.30	859.30	25.00	UC
377	Dailekh	Marpin(District Border)-Chupra	MH	H18	H1821	859.30	899.30	40.00	ER
378	Dailekh	Dailekh-Chhamgad R-Dullu	MH	H18	H1822	899.30	918.30	19.00	ER
379	Dailekh	Dullu-Lainchaur-Jambukandh-Ramgad R-Satal-Sain(District Border)	MH	H18	H1823	918.30	973.30	55.00	ER
380	Achham	Rakam(Belkhet)-Mangalsen (Midhill)	MH	H18	H1824	973.30	1021.30	48.00	ER
381	Achham	Mangalsen-Safebagar (Midhill)	MH	H18	H1825	1021.30	1025.30	4.00	ER
382	Achham	Mangalsen-Safebagar (Midhill)	MH	H18	H1825	1025.30	1060.30	35.00	BT
383	Kanchanpur	Shabha(MRM)-Bramhadev	NH	H19	H1901	0.00	13.30	13.30	PL
384	Kathmandu	Kathmandu (Outer Ring Road) - Chhaimale	NH	H20	H2001	0.00	11.00	11.00	PL

SN	District Name	Link Name	Class	Road Ref No	Link Code	From	To	Length	Pavement Status
385	Makwanpur	Chhaimale - Kulekhani - Budune - Shreepur - Jaspal	NH	H20	H2002	11.00	67.00	56.00	PL
386	Bara	Jaspal - Nijgadh(Kathmandu -Terai Fast Track)	NH	H20	H2003	67.00	81.80	14.80	PL
387	Kathmandu	Bhuthkel-Tokha-Changunarayan(KTM Outer Ringroad)	NH	H21	H2101	0.00	3.85	3.85	PL
388	Kathmandu	Bhuthkel-Tokha-Changunarayan(KTM Outer Ringroad)	NH	H21	H2102	3.85	15.35	11.50	PL
389	Kathmandu	Bhuthkel-Tokha-Changunarayan(KTM Outer Ringroad)	NH	H21	H2103	15.35	39.00	23.65	PL
390	Bhaktapur	Changunarayan-Suryabinyak-Lubhu(KTM Outer Ringroad)	NH	H21	H2104	39.00	53.80	14.80	PL
391	Bhaktapur	Changunarayan-Suryabinyak-Lubhu(KTM Outer Ringroad)	NH	H21	H2105	53.80	61.00	7.20	PL
392	Lalitpur	Lubhu-Thaiba-Bhuthkel(KTM Outer Ringroad)	NH	H21	H2106	61.00	72.00	11.00	GR
393	Jhapa	Birtamod (MRM)-Chandragadhi	FRN	F001	F00101	0.00	12.53	12.53	BT
394	Jhapa	Damak-Gauradaha Dipu	FRN	F002	F00201	0.00	10.56	10.56	BT
395	Jhapa	Gauradaha Dipu-Gaurigunj	FRN	F002	F00202	10.56	21.96	11.40	BT
396	Saptari	Bhardaha-Inaruwa	FRN	F003	F00301	0.00	7.00	7.00	BT
397	Saptari	Inaruwa-Rajbiraj municipality boundary	FRN	F003	F00302	7.00	16.13	9.13	BT
398	Saptari	Rajbiraj municipality boundary-Rajbiraj	FRN	F003	F00303	16.13	17.75	1.62	BT
399	Saptari	Rupani-Rajbiraj municipality boundary	FRN	F004	F00401	0.00	9.53	9.53	BT
400	Saptari	Rajbiraj municipality boundary-Rajbiraj	FRN	F004	F00402	9.53	11.27	1.74	BT
401	Saptari	Rajbiraj-Rajbiraj municipality boundary	FRN	F004	F00403	11.27	11.85	0.58	BT
402	Saptari	Rajbiraj municipality boundary-Malhaniya Chok-Kunauli	FRN	F004	F00404	11.85	23.10	11.25	BT
403	Siraha	Chauharwa-Siraha	FRN	F005	F00501	0.00	18.21	18.21	BT
404	Siraha	Siraha-Madar	FRN	F005	F00502	18.21	26.66	8.45	BT
405	Sarlahi	Nawalpur-Malangwa municipality boundary	FRN	F006	F00601	0.00	22.02	22.02	BT
406	Sarlahi	Malangwa municipality boundary-Malangwa	FRN	F006	F00602	22.02	26.63	4.61	BT
407	Sarlahi	Malangwa-Sonbarsa (IB)	FRN	F006	F00603	26.63	27.99	1.36	BT
408	Sarlahi	Malangwa-Sonbarsa (IB)	FRN	F006	F00603	27.99	29.19	1.20	GR
409	Rautahat	Chandranigahapur-Gaur municipality boundary	FRN	F007	F00701	0.00	38.27	38.27	BT
410	Rautahat	Gaur municipality boundary-Gaur	FRN	F007	F00702	38.27	44.14	5.87	BT
411	Rautahat	Gaur-Bairganiya (IB)	FRN	F007	F00703	44.14	45.44	1.30	BT
412	Nawalparasi	Bardaghat-Pratappur	FRN	F008	F00801	0.00	10.00	10.00	BT
413	Nawalparasi	Bardaghat-Pratappur	FRN	F008	F00801	10.00	13.80	3.80	GR
414	Nawalparasi	Pratappur-Surajpura	FRN	F008	F00802	13.80	18.38	4.58	BT
415	Nawalparasi	Surajpura-Harpur border	FRN	F008	F00803	18.38	23.05	4.67	BT
416	Nawalparasi	Sunwal-Parasi	FRN	F009	F00901	0.00	8.95	8.95	BT
417	Nawalparasi	Parasi-Maheshpur (IB)	FRN	F009	F00902	8.95	18.95	10.00	BT
418	Nawalparasi	Parasi-Maheshpur (IB)	FRN	F009	F00902	18.95	20.95	2.00	GR
419	Kapilbastu	Jitpur-Taulihawa municipality boundary	FRN	F010	F01001	0.00	9.50	9.50	BT
420	Kapilbastu	Jitpur-Taulihawa municipality boundary	FRN	F010	F01001	9.50	18.00	8.50	GR
421	Kapilbastu	Taulihawa municipality boundary-Bank Chauraha	FRN	F010	F01002	18.00	22.53	4.53	BT
422	Kapilbastu	Bank Chauraha-Taulihawa municipality boundary	FRN	F010	F01003	22.53	25.55	3.02	BT
423	Kapilbastu	Taulihawa municipality boundary-khunuwa	FRN	F010	F01004	25.55	33.39	7.84	BT
424	Kapilbastu	Taulihawa-Gorusinge	FRN	F011	F01101	0.00	3.00	3.00	BT
425	Kapilbastu	Taulihawa-Gorusinge	FRN	F011	F01101	3.00	14.00	11.00	GR
426	Kapilbastu	Gorusinge-Patharkot	FRN	F011	F01102	14.00	25.01	11.01	BT
427	Kapilbastu	Patharkot-Kapilvastu district border	FRN	F011	F01103	25.01	26.34	1.33	BT
428	Arghakhanchi	Kapilvastu district border-Thada Jugena	FRN	F011	F01104	26.34	50.82	24.48	BT
429	Arghakhanchi	Thada Jugena-Angure Ghumti	FRN	F011	F01105	50.82	67.12	16.30	BT
430	Arghakhanchi	Thada Jugena-Angure Ghumti	FRN	F011	F01105	67.12	69.12	2.00	GR
431	Arghakhanchi	Angure Ghumti-Sandhikharka	FRN	F011	F01106	69.12	83.13	14.01	BT
432	Kapilbastu	Chanauta-Bahadurgunj	FRN	F012	F01201	0.00	12.02	12.02	BT
433	Kapilbastu	Bahadurgunj-Krishnanagar	FRN	F012	F01202	12.02	20.06	8.04	BT
434	Dang	Bhalubang-Ganaha Khola bridge	FRN	F013	F01301	0.00	8.00	8.00	BT
435	Pyuthan	Ganaha Khola bridge-Chakchake	FRN	F013	F01302	8.00	43.43	35.43	BT
436	Pyuthan	Chakchake-Rolpa district border	FRN	F013	F01303	43.43	68.43	25.00	BT
437	Rolpa	Rolpa district border-Rolpa, Liwang	FRN	F013	F01304	68.43	106.84	38.41	BT

SN	District Name	Link Name	Class	Road Ref No	Link Code	From	To	Length	Pavement Status
438	Rolpa	Liwang-Madichaur-Darbot(Junction SahidMarg)	FRN	F013	F01305	106.84	130.84	24.00	ER
439	Pyuthan	Pyuthan-Chakchake	FRO	F014	F01401	0.00	25.00	25.00	BT
440	Pyuthan	Devisthan-Loharpani	FRO	F014	F01402	25.00	39.00	14.00	ER
441	Dang	Loharpani-Ghorahi	FRO	F014	F01403	39.00	51.00	12.00	GR
442	Dang	Loharpani-Ghorahi	FRO	F014	F01403	51.00	75.00	24.00	ER
443	Dang	Lamahi-Tribhuvannagar municipality boundary	FRN	F015	F01501	0.00	18.87	18.87	BT
444	Dang	Tribhuvannagar municipalityboundary-Tribhuwannagar	FRN	F015	F01502	18.87	22.91	4.04	BT
445	Dang	Tribhuvannagar-Tribhuvan municipality boundary	FRN	F015	F01503	22.91	29.01	6.10	BT
446	Dang	Tribhuvannagar-Tulsipur municipality boundary	FRN	F015	F01504	29.01	44.02	15.01	BT
447	Dang	Tulsipur municipality boundry-Tulsipur	FRN	F015	F01505	44.02	46.62	2.60	BT
448	Bardiya	Bhuregaun-Junction, road to	FRN	F016	F01601	0.00	14.67	14.67	GR
449	Bardiya	Junction, road to -Gulariya	FRN	F016	F01602	14.67	21.25	6.58	BT
450	Bardiya	Junction, road to -Gulariya	FRN	F016	F01602	21.25	32.31	11.06	GR
451	Bardiya	Gulariya-Murtihawa	FRN	F016	F01603	32.31	35.31	3.00	BT
452	Kailali	Junga-Junction, road to Tikapur	FRN	F017	F01701	0.00	0.60	0.60	BT
453	Kailali	Junga-Junction, road to Tikapur	FRN	F017	F01701	0.60	13.85	13.25	GR
454	Kailali	Junction, road to Tikapur-Sati	FRN	F017	F01702	13.85	22.12	8.27	BT
455	Kailali	Sati-Rajapur	FRN	F017	F01703	22.12	28.12	6.00	BT
456	Bardiya	Rajapur-Bhimapur(IB)	FRN	F017	F01704	28.12	34.12	6.00	ER
457	Parsa	Birgunj-Bara district border	FRN	F018	F01801	0.00	2.78	2.78	BT
458	Bara	Bara district border-Kalaiya municipality boundary	FRN	F018	F01802	2.78	9.64	6.86	BT
459	Bara	Kalaiya municipality boundary-Kalaiya	FRN	F018	F01803	9.64	11.66	2.02	BT
460	Makwanpur	Bhaise-Bhimphedi	FRN	F019	F01901	0.00	12.00	12.00	BT
461	Makwanpur	Palung-Kulekhani	FRN	F020	F02001	0.00	20.57	20.57	GR
462	Kathmandu	Tripureshwar-Ring road	FRN	F021	F02101	0.00	4.38	4.38	BT
463	Kathmandu	Ring road-Balaju Bypass	FRN	F021	F02102	4.38	5.34	0.96	BT
464	Kathmandu	Balaju bypas-Nagarjun	FRN	F021	F02103	5.34	6.93	1.59	BT
465	Kathmandu	Nagarjun-Thulo Khola	FRN	F021	F02104	6.93	17.05	10.12	BT
466	Nuwakot	Thulo Khola-Kakani	FRN	F021	F02105	17.05	24.73	7.68	BT
467	Nuwakot	Kakani-Tadi Khola	FRN	F021	F02106	24.73	59.33	34.60	BT
468	Nuwakot	Tadi Khola-Batar	FRN	F021	F02107	59.33	66.85	7.52	BT
469	Nuwakot	Batar-Gerkha Khola	FRN	F021	F02108	66.85	71.56	4.71	BT
470	Nuwakot	Gerkha Khola-Phalankha Khola	FRN	F021	F02109	71.56	77.76	6.20	BT
471	Rasuwa	Phalankha Khola-Dhunche	FRN	F021	F02110	77.76	118.26	40.50	BT
472	Rasuwa	Dhunche-Shyaphru	FRN	F021	F02111	118.26	128.26	10.00	GR
473	Rasuwa	Shyaphru-Rasuwadadi(IB)	FRN	F021	F02112	128.26	143.96	15.70	ER
474	Kathmandu	Balkhu-Chovar	FRN	F022	F02201	0.00	4.28	4.28	BT
475	Kathmandu	Chovar-Chhaimale	FRN	F022	F02202	4.28	22.39	18.11	BT
476	Makwanpur	Chhaimale-Kulekhani	FRN	F022	F02203	22.39	35.59	13.20	BT
477	Lalitpur	Satdobato-Sunakothi	FRN	F023	F02301	0.00	2.42	2.42	BT
478	Lalitpur	Sunakothi-Junction, road to Lele	FRN	F023	F02302	2.42	7.57	5.15	BT
479	Lalitpur	Sunakothi-Junction, road to Lele	FRN	F023	F02302	7.57	11.10	3.53	GR
480	Lalitpur	Junction, road to Lele-Tikabhairab	FRN	F023	F02303	11.10	11.57	0.47	GR
481	Lalitpur	Satdobato-Karmanas bridge	FRN	F024	F02401	0.00	1.70	1.70	BT
482	Lalitpur	Karmanas bridge-Godavari	FRN	F024	F02402	1.70	9.38	7.68	BT
483	Lalitpur	Godavari-Phulchoki (Lalitpur)	FRN	F024	F02403	9.38	17.38	8.00	BT
484	Lalitpur	Godavari-Phulchoki (Lalitpur)	FRN	F024	F02403	17.38	22.24	4.86	GR
485	Kavrepalanchok	Godavari-Phulchoki (Kabhrepalanchowk)	FRN	F024	F02404	22.24	23.24	1.00	GR
486	Kathmandu	Lainchaur-Maharajgunj	FRN	F025	F02501	0.00	4.50	4.50	BT
487	Kathmandu	Maharajgunj-Bansbari	FRN	F025	F02502	4.50	5.34	0.84	BT
488	Kathmandu	Bansbari-Budhanilkantha	FRN	F025	F02503	5.34	9.39	4.05	BT
489	Kathmandu	Chabahil (Ktm Ring road)-Pipalbot	FRN	F026	F02601	0.00	1.91	1.91	BT
490	Kathmandu	Pipal Bot-Sankhu	FRN	F026	F02602	1.91	12.78	10.87	BT
491	Kathmandu	Pipal Bot-Sankhu	FRN	F026	F02602	12.78	13.23	0.45	ER
492	Kathmandu	Sakhu-Lapsephedi-Bhotechaur	FRN	F026	F02603	13.23	16.23	3.00	GR
493	Kathmandu	Sakhu-Lapsephedi-Bhotechaur	FRN	F026	F02603	16.23	25.43	9.20	ER

SN	District Name	Link Name	Class	Road Ref No	Link Code	From	To	Length	Pavement Status
494	Sindhupalchok	Bhotechaur-Chhapeli(Junction To Sindhu Access Road)	FRN	F026	F02604	25.43	35.85	10.42	UC
495	Sindhupalchok	Chhapeli(Junction To Sindhu Access Road)-Bahuneapati(Junction To F03)	FRN	F026	F02605	35.85	48.45	12.60	ER
496	Sindhupalchok	Melamchi(Junction to F03)-Chautara	FRN	F026	F02606	48.45	70.45	22.00	ER
497	Kathmandu	Jorpati-Sundarijal	FRO	F027	F02701	0.00	7.13	7.13	BT
498	Bhaktapur	Bhaktapur-Army camp	FRN	F028	F02801	0.00	4.40	4.40	BT
499	Bhaktapur	Army camp-Nagarkot	FRN	F028	F02802	4.40	23.00	18.60	BT
500	Kavrepalanchok	Banepa-Punyamata bridge	FRN	F029	F02901	0.00	0.59	0.59	BT
501	Kavrepalanchok	Punyamata bridge-Panauti	FRN	F029	F02902	0.59	6.00	5.41	BT
502	Kavrepalanchok	Panauti-Khopasi	FRN	F029	F02903	6.00	8.60	2.60	BT
503	Kavrepalanchok	Panauti-Khopasi	FRN	F029	F02903	8.60	9.54	0.94	GR
504	Kavrepalanchok	Panchkhal-Dhad Khola	FRN	F030	F03001	0.00	10.66	10.66	BT
505	Sindhupalchok	Dhad Khola-Melamchi	FRN	F030	F03002	10.66	22.50	11.84	BT
506	Sindhupalchok	Melamchi-Helambu	FRN	F030	F03003	22.50	28.50	6.00	GR
507	Sindhupalchok	Melamchi-Helambu	FRN	F030	F03003	28.50	63.00	34.50	ER
508	Sindhupalchok	Dolaighat-Chautara	FRN	F031	F03101	0.00	25.11	25.11	BT
509	Sindhupalchok	Lamosangu-Ningaledanda	FRN	F032	F03201	0.00	28.27	28.27	BT
510	Dolakha	Ningaledanda-Charikot	FRN	F032	F03202	28.27	53.72	25.45	BT
511	Dolakha	Charikot-Tamakoshi (Junction road to Jiri)	FRN	F032	F03203	53.72	71.92	18.20	BT
512	Dolakha	Tamakoshi-Milti Khola	FRN	F032	F03204	71.92	91.92	20.00	BT
513	Ramechhap	Milti Khola-Kirnetar	FRN	F032	F03205	91.92	93.92	2.00	BT
514	Ramechhap	Kirentar-Khimti Khola	FRN	F032	F03206	93.92	96.02	2.10	BT
515	Ramechhap	Khimti Khola-Ramechhap	FRN	F032	F03207	96.02	124.92	28.90	BT
516	Dolakha	Tamkoshi-Jiri	FRN	F033	F03301	0.00	38.03	38.03	BT
517	Dhading	Malekhu-Dhading Besi	FRN	F034	F03401	0.00	17.50	17.50	BT
518	Tanahu	Anbukhaireni (PRM)-Marshyangdi River	FRN	F035	F03501	0.00	0.85	0.85	BT
519	Gorkha	Marsyangdi River-Gorkha	FRN	F035	F03502	0.85	24.69	23.84	BT
520	Tanahu	Dumre(PRM)-district border	FRN	F036	F03601	0.00	24.26	24.26	BT
521	Lamjung	District border-Besisahar	FRN	F036	F03602	24.26	43.43	19.17	BT
522	Lamjung	Besisahar-Ghermu	FRN	F036	F03603	43.43	60.43	17.00	ER
523	Lamjung	Ghermu-Sattale	FRN	F036	F03604	60.43	78.43	18.00	ER
524	Manang	Sattale-Chame	FRN	F036	F03605	78.43	107.43	29.00	ER
525	Chitawan	Bharatpur Bypass Road	FRN	F037	F03701	0.00	4.49	4.49	BT
526	Ilam	Fikkal-Pasupatinagar	FRN	F038	F03801	0.00	10.75	10.75	BT
527	Morang	Biratnagar-Singhiya bridge	FRN	F039	F03901	0.00	2.35	2.35	BT
528	Morang	Singhiya bridge-Rangeli	FRN	F039	F03902	2.35	23.88	21.53	BT
529	Dhankuta	Hile-Gunrase	FRN	F040	F04001	0.00	4.18	4.18	BT
530	Dhankuta	Gunrase-Chitre	FRN	F040	F04002	4.18	17.41	13.23	BT
531	Terhathum	Chitre-Basantapur	FRN	F040	F04003	17.41	21.53	4.12	BT
532	Terhathum	Basantapur-Tehrathum	FRN	F040	F04004	21.53	48.18	26.65	BT
533	Kaski	Pokhara-Sarankot	FRN	F041	F04101	0.00	4.80	4.80	BT
534	Kaski	Pokhara-Bindebasini	FRN	F042	F04201	0.00	3.96	3.96	BT
535	Kaski	Bindebasini-Yamdi bridge	FRN	F042	F04202	3.96	6.72	2.76	BT
536	Kaski	Yamdi bridge-Sandh bridge	FRN	F042	F04203	6.72	43.76	37.04	BT
537	Parbat	Sandh bridge-Kaligandaki bridge	FRN	F042	F04204	43.76	67.87	24.11	BT
538	Baglung	Kaligandaki bridge-Baglung	FRN	F042	F04205	67.87	72.58	4.71	BT
539	Baglung	Baglung-Myagdi district border	FRN	F042	F04206	72.58	77.58	5.00	BT
540	Baglung	Baglung-Myagdi district border	FRN	F042	F04206	77.58	80.00	2.42	GR
541	Myagdi	Myagdi district border-Beni	FRN	F042	F04207	80.00	90.00	10.00	GR
542	Myagdi	Beni-Pairothapla	FRN	F042	F04208	90.00	111.00	21.00	ER
543	Mustang	Pairothapla-Jomsong	FRN	F042	F04209	111.00	170.00	59.00	ER
544	Mustang	Jomsong-Ghoktang	FRN	F042	F04210	170.00	292.00	122.00	ER
545	Palpa	Bartung (SRM)-Batase Danda	FRN	F043	F04301	0.00	4.61	4.61	BT
546	Palpa	Batase Danda-Harthok	FRN	F043	F04302	4.61	15.48	10.87	BT
547	Palpa	Harthok-Ridi bridge	FRN	F043	F04303	15.48	35.66	20.18	BT
548	Gulmi	Ridi bridge-Ghumti	FRN	F043	F04304	35.66	68.46	32.80	BT
549	Gulmi	Ghumti-Tamghas	FRN	F043	F04305	68.46	80.20	11.74	BT
550	Gulmi	Tamghas-Wamitaxsar	FRN	F043	F04306	80.20	98.80	18.60	PL

SN	District Name	Link Name	Class	Road Ref No	Link Code	From	To	Length	Pavement Status
551	Rupandehi	Bhairahawa-Bhairahawa municipality boundary	FRN	F044	F04401	0.00	4.40	4.40	BT
552	Rupandehi	Bhairahawa municipality boundary-Lumbini Junction	FRN	F044	F04402	4.40	18.05	13.65	BT
553	Rupandehi	Lumbini Junction-Padaria Chok	FRN	F044	F04403	18.05	22.78	4.73	BT
554	Rupandehi	Padariya Chok-Kakrahawa	FRO	F044	F04404	22.78	25.78	3.00	BT
555	Rupandehi	Padariya Chok-Kakrahawa	FRO	F044	F04404	25.78	30.78	5.00	GR
556	Rupandehi	Lumbini-Kothi bridge	FRO	F045	F04501	0.00	5.71	5.71	BT
557	Kapilbastu	Kothi bridge-Taulihawa municipality boundary	FRO	F045	F04502	5.71	22.85	17.14	BT
558	Kapilbastu	Taulihawa municipality boundary-Taulihawa	FRO	F045	F04503	22.85	24.55	1.70	BT
559	Banke	Nepalgunj-Nepalgunj municipality boundary	FRN	F046	F04601	0.00	1.89	1.89	BT
560	Banke	Nepalgunj municipality boundary-Man bridge	FRN	F046	F04602	1.89	15.40	13.51	BT
561	Bardiya	Man bridge-Gulariya	FRN	F046	F04603	15.40	35.22	19.82	BT
562	Surkhet	Chinchu-Raikar	FRN	F047	F04701	0.00	26.00	26.00	BT
563	Surkhet	Chinchu-Raikar	FRN	F047	F04701	26.00	31.00	5.00	GR
564	Salyan	Raikar-Devasthal	FRN	F047	F04702	31.00	45.00	14.00	GR
565	Surkhet	Devasthal-Chedaghad Khola	FRN	F047	F04703	45.00	62.00	17.00	GR
566	Surkhet	Devasthal-Chedaghad Khola	FRN	F047	F04703	62.00	70.00	8.00	ER
567	Jajarkot	Chhedagad Khola-Jajarkot	FRN	F047	F04704	70.00	107.00	37.00	ER
568	Jajarkot	Jajarkot-Tribeni	FRN	F047	F04705	107.00	143.00	36.00	ER
569	Jajarkot	Jajarkot-Tribeni	FRN	F047	F04705	143.00	204.00	61.00	UC
570	Dolpa	Tribeni-Dunai	FRN	F047	F04706	204.00	260.00	56.00	UC
571	Surkhet	Surkhet-Dailekh district border	FRN	F048	F04801	0.00	22.00	22.00	BT
572	Dailekh	Dailekh district border-Siyakot-Dailekh	FRN	F048	F04802	22.00	45.65	23.65	BT
573	Dailekh	Dailekh district border-Siyakot-Dailekh	FRN	F048	F04802	45.65	47.35	1.70	GR
574	Dailekh	Dailekh district border-Siyakot-Dailekh	FRN	F048	F04802	47.35	54.74	7.38	BT
575	Dailekh	Dailekh district border-Siyakot-Dailekh	FRN	F048	F04802	54.74	55.07	0.33	GR
576	Dailekh	Dailekh district border-Siyakot-Dailekh	FRN	F048	F04802	55.07	62.27	7.20	BT
577	Dailekh	Dailekh district border-Siyakot-Dailekh	FRN	F048	F04802	62.27	67.01	4.74	GR
578	Baitadi	Khodpe-Bithad	FRN	F049	F04901	0.00	16.90	16.90	BT
579	Baitadi	Khodpe-Bithad	FRN	F049	F04901	16.90	17.00	0.10	GR
580	Baitadi	Khodpe-Bithad	FRN	F049	F04901	17.00	26.20	9.20	BT
581	Baitadi	Khodpe-Bithad	FRN	F049	F04901	26.20	26.80	0.60	GR
582	Baitadi	Khodpe-Bithad	FRN	F049	F04901	26.80	27.50	0.70	BT
583	Baitadi	Khodpe-Bithad	FRN	F049	F04901	27.50	27.60	0.10	GR
584	Baitadi	Khodpe-Bithad	FRN	F049	F04901	27.60	29.60	2.00	BT
585	Bajhang	Bithad-Kalangagad	FRN	F049	F04901	29.60	39.50	9.90	BT
586	Bajhang	Bithad-Kalangagad	FRN	F049	F04901	39.50	39.80	0.30	GR
587	Bajhang	Bithad-Kalangagad	FRN	F049	F04901	39.80	45.50	5.70	BT
588	Bajhang	Bithad-Kalangagad	FRN	F049	F04901	45.50	60.32	14.82	BT
589	Bajhang	Kalangagad-Deura	FRN	F049	F04902	60.32	67.42	7.10	ER
590	Bajhang	Deura-Tamail	FRN	F049	F04903	67.42	95.42	28.00	ER
591	Bajhang	Tamail-Chainpur	FRN	F049	F04904	95.42	108.68	13.26	ER
592	Baitadi	Satbanj-Baitadi	FRN	F050	F05001	0.00	18.45	18.45	BT
593	Baitadi	Baitadi-Jhulaghat	FRN	F050	F05002	18.45	22.45	4.00	BT
594	Baitadi	Baitadi-Jhulaghat	FRN	F050	F05002	22.45	42.05	19.60	ER
595	Doti	Silgadhi-Chaukhutte Bajar	FRN	F051	F05101	0.00	41.00	41.00	BT
596	Achham	Chaukhutte Bajar-Sanfebagar	FRN	F051	F05102	41.00	67.00	26.00	BT
597	Siraha	Mirchiya (MRM)-Jyamire (District Border)	FRN	F052	F05201	0.00	7.00	7.00	BT
598	Udayapur	Jyamire (District Border)-Katari	FRN	F052	F05202	7.00	27.00	20.00	BT
599	Udayapur	Katari-Harkapur (Sunkoshi)	FRN	F052	F05203	27.00	76.00	49.00	BT
600	Okhaldhunga	Harkapur (Sunkoshi)-Okhaldhunga	FRN	F052	F05204	76.00	112.00	36.00	ER
601	Okhaldhunga	Okhaldhunga-Mudhe Bisana	FRN	F052	F05205	112.00	132.70	20.70	ER
602	Solukhumbu	Mudhe Bisana-Salleri	FRN	F052	F05206	132.70	169.90	37.20	ER
603	Terhathum	Basantapur-Deurali(District Border)	FRN	F053	F05301	0.00	2.30	2.30	BT
604	Sankhuwasabha	Deurali(District Border)-Mudhe Shanishchare	FRN	F053	F05302	2.30	13.00	10.70	BT
605	Sankhuwasabha	Mude-Chainpur	FRN	F053	F05303	13.00	50.00	37.00	BT
606	Sankhuwasabha	Chainpur-Sawa Khola	FRN	F053	F05304	50.00	75.00	25.00	GR
607	Sankhuwasabha	Sawa Khola-Khandbari	FRN	F053	F05305	75.00	94.30	19.30	ER
608	Sankhuwasabha	Khandbari-Kuwapani	FRN	F053	F05306	94.30	116.00	21.70	ER

SN	District Name	Link Name	Class	Road Ref No	Link Code	From	To	Length	Pavement Status
609	Sankhuwasabha	Kuwapani-Num	FRN	F053	F05307	116.00	135.40	19.40	PL
610	Sankhuwasabha	Num-Kimathangka	FRN	F053	F05308	135.40	207.40	72.00	PL
611	Sunsari	Duhabi (KRM)-Inarwa	FRN	F054	F05401	0.00	14.00	14.00	BT
612	Siraha	Lahan (MRM)-Bhagwanpur-Thadi	FRN	F055	F05501	0.00	18.00	18.00	BT
613	Sunsari	Jhumka (MRM)-Chatara(F057)	FRN	F056	F05601	0.00	19.00	19.00	GR
614	Sunsari	Chatara(F057)-Barahachhetra	FRN	F056	F05602	19.00	26.00	7.00	GR
615	Sunsari	Dharan - Chatara	FRN	F057	F05701	0.00	4.00	4.00	BT
616	Sunsari	Dharan - Chatara	FRN	F057	F05701	4.00	16.00	12.00	GR
617	Udayapur	Chatara-Phattepur-Murkucha-Gaighat-Katari	FRN	F057	F05702	16.00	27.00	11.00	GR
618	Udayapur	Chatara-Phattepur-Murkucha-Gaighat-Katari	FRN	F057	F05702	27.00	77.00	50.00	ER
619	Udayapur	Chatara-Phattepur-Murkucha-Gaighat-Katari	FRN	F057	F05702	77.00	84.00	7.00	GR
620	Udayapur	Chatara-Phattepur-Murkucha-Gaighat-Katari	FRN	F057	F05702	84.00	119.00	35.00	ER
621	Udayapur	Katari(F052)-Baireni	FRN	F057	F05703	119.00	120.50	1.50	ER
622	Sindhuli	Baireni-Bhiman(H06)	FRN	F057	F05704	120.50	132.50	12.00	GR
623	Sindhuli	Baireni-Bhiman(H06)	FRN	F057	F05704	132.50	197.50	65.00	ER
624	Sindhuli	Sindhulibazar-Gurji	FRN	F057	F05705	197.50	261.50	64.00	ER
625	Sindhuli	Sindhulibazar-Gurji	FRN	F057	F05705	261.50	269.50	8.00	ER
626	Sindhuli	Sindhulibazar-Gurji	FRN	F057	F05705	269.50	285.30	15.80	GR
627	Makwanpur	Gurji-Hetauda (Partly Kathmandu-Terai Fast Track)	FRN	F057	F05706	285.30	346.50	61.20	GR
628	Dhankuta	Bhedetar (KRM)-Kopche	FRN	F058	F05801	0.00	5.00	5.00	BT
629	Dhankuta	Bhedetar (KRM)-Kopche	FRN	F058	F05801	5.00	34.00	29.00	GR
630	Panchthar	Kopche-Dadabazar-Ekrate Bhanjyang	FRN	F058	F05802	34.00	41.00	7.00	ER
631	Panchthar	Ekrate Bhanjyang-Rabi	FRN	F058	F05803	41.00	92.00	51.00	ER
632	Ilam	Rabi-Ranke(MERM)	FRN	F058	F05804	92.00	114.00	22.00	ER
633	Ilam	Rabi-Ranke(MERM)	FRN	F058	F05804	114.00	116.00	2.00	GR
634	Jhapa	Birtamoad (MRM)-Sanischare-Budhbare	FRN	F059	F05901	0.00	12.86	12.86	BT
635	Morang	Bardanga-Urlabari (MRM)	FRN	F060	F06001	0.00	28.00	28.00	BT
636	Morang	Urlabari (MRM)-Madhumalla	FRN	F060	F06002	28.00	39.00	11.00	ER
637	Ilam	Madhumalla-Daregaunda	FRN	F060	F06003	39.00	56.00	17.00	ER
638	Morang	Rangeli-Kanepokhari	FRN	F061	F06101	0.00	20.00	20.00	GR
639	Morang	Rangeli-Kanepokhari	FRN	F061	F06101	20.00	22.00	2.00	ER
640	Morang	Kanepokhari-Dandagaun	FRN	F061	F06102	22.00	22.30	0.30	BT
641	Morang	Kanepokhari-Dandagaun	FRN	F061	F06102	22.30	24.80	2.50	GR
642	Morang	Kanepokhari-Dandagaun	FRN	F061	F06102	24.80	52.00	27.20	ER
643	Dhankuta	Dandagaun-Budhabare	FRN	F061	F06103	52.00	54.00	2.00	ER
644	Morang	Ghinaghat (MRM)-Biratchok	FRN	F062	F06201	0.00	23.00	23.00	BT
645	Sunsari	Inerwa (MRM)-Kaptanganj	FRN	F063	F06301	0.00	8.00	8.00	BT
646	Sunsari	Inerwa (MRM)-Kaptanganj	FRN	F063	F06301	8.00	24.00	16.00	GR
647	Saptari	Phattepur-Kanchanpur	FRN	F064	F06401	0.00	15.60	15.60	BT
648	Saptari	Kanchanpur-Rajbiraj	FRN	F064	F06402	15.60	21.00	5.40	BT
649	Saptari	Kanchanpur-Rajbiraj	FRN	F064	F06402	21.00	38.00	17.00	GR
650	Saptari	Rajbiraj-Sakhada-Gobindapur	FRN	F064	F06403	38.00	54.00	16.00	ER
651	Saptari	Kathauna (MRM)-Pato (IB)	FRN	F065	F06501	0.00	16.50	16.50	GR
652	Saptari	Kalyanpur(MRM)-Barsain-Subhrapatti (IB)	FRN	F066	F06601	0.00	18.00	18.00	GR
653	Siraha	Dhangarhi (MRM)-Vidyanagar-Bariyarpatti	FRN	F067	F06701	0.00	17.00	17.00	BT
654	Parsa	ICD (Pokhariya)-Parwanipur	FRN	F068	F06801	0.00	10.20	10.20	BT
655	Dhading	Galchhi (PRM)-Baghmara	FRN	F069	F06901	0.00	3.00	3.00	BT
656	Nuwakot	Baghmara (PRM)-Debighat	FRN	F069	F06902	3.00	10.00	7.00	BT
657	Nuwakot	Baghmara (PRM)-Debighat	FRN	F069	F06902	10.00	20.00	10.00	BT
658	Ramechhap	Khurkot (H06)-Manthali	FRN	F070	F07001	0.00	11.00	11.00	BT
659	Kavrepalanchok	Panchkhal (ARM)-Palanchok Bhagawati	FRN	F071	F07101	0.00	10.00	10.00	BT
660	Kavrepalanchok	Panchkhal (ARM)-Palanchok Bhagawati	FRN	F071	F07101	10.00	11.00	1.00	GR
661	Lalitpur	Gwarko-Lubhu-Lankuri Bhanjyang	FRN	F072	F07201	0.00	13.00	13.00	BT
662	Lalitpur	Gwarko-Lubhu-Lankuri Bhanjyang	FRN	F072	F07201	13.00	21.18	8.18	GR
663	Kavrepalanchok	Lankuri Bhanjyang-Panauti-Namobudha-DSRM (H06)	FRN	F072	F07202	21.18	30.28	9.10	BT
664	Kavrepalanchok	Lankuri Bhanjyang-Panauti-Namobudha-DSRM (H06)	FRN	F072	F07202	30.28	41.18	10.90	GR

SN	District Name	Link Name	Class	Road Ref No	Link Code	From	To	Length	Pavement Status
665	Kavrepalanchok	Bakhundo(ARM)-Bogatigaun(Ktm University Road)	FRN	F073	F07301	0.00	2.00	2.00	BT
666	Nuwakot	Damki-Phalante (Nuwakot Darbar Access Road)	FRO	F074	F07401	0.00	6.00	6.00	BT
667	Nuwakot	Damki-Phalante (Nuwakot Darbar Access Road)	FRO	F074	F07401	6.00	8.00	2.00	GR
668	Kathmandu	Kalimati-Bahiti	FRN	F075	F07501	0.00	2.10	2.10	BT
669	Kathmandu	Bahiti-Sitapaila	FRN	F075	F07502	2.10	4.10	2.00	BT
670	Kathmandu	Sitapaila-Bhimdhunga	FRN	F075	F07503	4.10	10.10	6.00	PL
671	Dhading	Bhimdhunga-Dharke	FRN	F075	F07504	10.10	33.10	23.00	PL
672	Kathmandu	Ringroad-Tinpipale	FRN	F076	F07601	0.00	2.00	2.00	ER
673	Kathmandu	Ringroad-Tinpipale	FRN	F076	F07601	2.00	8.00	6.00	PL
674	Nuwakot	Tinpipale-Okarpauwa-Kolpu	FRN	F076	F07602	8.00	35.00	27.00	PL
675	Kathmandu	Budhanilkantha-Dandagaun(KVRR)	FRO	F077	F07701	0.00	4.00	4.00	BT
676	Kathmandu	Budhanilkantha-Dandagaun(KVRR)	FRO	F077	F07701	4.00	5.00	1.00	ER
677	Kathmandu	Gurje-Kuwapani	FRO	F077	F07702	5.00	12.20	7.20	PL
678	Nuwakot	Kuwapani-Kakani-Kaulethana(F21)	FRO	F077	F07703	12.20	16.20	4.00	BT
679	Nuwakot	Kuwapani-Kakani-Kaulethana(F21)	FRO	F077	F07703	16.20	18.70	2.50	PL
680	Kathmandu	HalChok-Narayanthan(KVRR)	FRN	F078	F07801	0.00	3.50	3.50	BT
681	Kathmandu	HalChok-Narayanthan(KVRR)	FRN	F078	F07802	3.50	6.10	2.60	PL
682	Kathmandu	Thulo Bharyang (Ring Road)-Raniban Post	FRN	F079	F07901	0.00	2.40	2.40	PL
683	Kathmandu	Balaju-Nepaltar-Sangla Bazar	FRN	F080	F08001	0.00	1.50	1.50	BT
684	Kathmandu	Balaju-Nepaltar-Sangla Bazar	FRN	F080	F08001	1.50	7.50	6.00	GR
685	Kathmandu	Balaju-Nepaltar-Sangla Bazar	FRN	F080	F08001	7.50	11.80	4.30	PL
686	Kathmandu	Baniyatar-Samakhushi Chok-Lainchaur (Ascol) (KVRR)	FRN	F081	F08101	0.00	4.00	4.00	BT
687	Kathmandu	Samakhushi Chok-Tokhagaun-Chandeshwarigaun(KVRR)	FRN	F082	F08201	0.00	5.00	5.00	BT
688	Kathmandu	Samakhushi Chok-Tokhagaun-Chandeshwarigaun(KVRR)	FRN	F082	F08201	5.00	6.00	1.00	GR
689	Kathmandu	Chandeshwarigaun-Dandagaun(KVRR)	FRN	F082	F08202	6.00	9.50	3.50	GR
690	Kathmandu	Dandagaun(KVRR)-Gurjebhanjyang	FRO	F082	F08203	9.50	17.00	7.50	ER
691	Nuwakot	Gurjebhanjyang-Chhahare-Tadi	FRN	F082	F08204	17.00	21.00	4.00	GR
692	Nuwakot	Gurjebhanjyang-Chhahare-Tadi	FRN	F082	F08204	21.00	33.00	12.00	ER
693	Nuwakot	Gurjebhanjyang-Chhahare-Tadi	FRN	F082	F08204	33.00	35.00	2.00	UC
694	Nuwakot	Gurjebhanjyang-Chhahare-Tadi	FRN	F082	F08204	35.00	42.00	7.00	PL
695	Nuwakot	Tadi-Gangate (F21)	FRN	F082	F08205	42.00	54.80	12.80	BT
696	Kathmandu	Kapan-Mandikatar-Damaged Bridge South	FRN	F083	F08301	0.00	4.50	4.50	PL
697	Kathmandu	Chuchhepati-Mahankal-Kapan-Dandagaun(KVRR)	FRO	F084	F08401	0.00	5.00	5.00	BT
698	Kathmandu	Dandagaun-Gamcha(KVRR)	FRO	F084	F08402	5.00	7.80	2.80	PL
699	Kathmandu	Mahankal-Atterkhel	FRO	F085	F08501	0.00	1.70	1.70	ER
700	Kathmandu	Mahankal-Atterkhel	FRO	F085	F08501	1.70	2.50	0.80	PL
701	Kathmandu	Jadibuti (ARM)-Sinamangal	FRN	F086	F08601	0.00	2.30	2.30	BT
702	Bhaktapur	Sinamangal-Manohara-Thimi-Sallaghari	FRN	F086	F08602	2.30	7.30	5.00	BT
703	Kathmandu	Pepsikola-Gothetar(KVRR)	FRO	F087	F08701	0.00	3.00	3.00	BT
704	Kathmandu	Pepsikola-Gothetar(KVRR)	FRO	F087	F08701	3.00	3.50	0.50	GR
705	Kathmandu	Gokarna-Jorpati-Gothatar(KVRR)	FRO	F088	F08801	0.00	0.10	0.10	BT
706	Kathmandu	Gokarna-Jorpati-Gothatar(KVRR)	FRO	F088	F08801	0.10	1.60	1.50	BT
707	Kathmandu	Gokarna-Jorpati-Gothatar(KVRR)	FRO	F088	F08801	1.60	2.60	1.00	BT
708	Kathmandu	Gokarna-Jorpati-Gothatar(KVRR)	FRO	F088	F08801	2.60	3.60	1.00	BT
709	Kathmandu	Pepsicola-Karkigaun(KVRR)	FRO	F089	F08901	0.00	6.40	6.40	GR
710	Bhaktapur	Thimi (SOS)-Lokanthali (ARM)	FRN	F090	F09001	0.00	3.35	3.35	BT
711	Bhaktapur	Lokanthali (ARM)-Dharmeshwar	FRN	F090	F09002	3.35	5.00	1.65	BT
712	Lalitpur	Dharmeshwar-Tikathali-Manohara (KVRR)	FRN	F090	F09002	5.00	5.30	0.30	BT
713	Bhaktapur	Kausaitar-Baikot-Sirutar-Biruwa(KVRR)	FRN	F091	F09101	0.00	4.00	4.00	BT
714	Bhaktapur	Kausaitar-Baikot-Sirutar-Biruwa(KVRR)	FRN	F091	F09101	4.00	6.00	2.00	GR
715	Bhaktapur	Thimi (ARM)-Bode-Karkigaun(KVRR)	FRN	F092	F09201	0.00	4.20	4.20	BT
716	Kathmandu	Karkigaun-Mulpani-Gokarna(KVRR)	FRN	F092	F09202	4.20	8.30	4.10	BT
717	Bhaktapur	Sallaghari (Bhaktapur)-Duwakot(KVRR)	FRO	F093	F09301	0.00	5.50	5.50	BT
718	Bhaktapur	Byasi (Bhaktapur)-Changunarayan	FRN	F094	F09401	0.00	5.80	5.80	BT
719	Kathmandu	Mulpani-Phuyalgaun	FRO	F095	F09501	0.00	1.50	1.50	PL

SN	District Name	Link Name	Class	Road Ref No	Link Code	From	To	Length	Pavement Status
720	Bhaktapur	Phuyalgaun-Changunarayan	FRO	F095	F09502	1.50	4.33	2.83	BT
721	Bhaktapur	Changunarayan-Phedigaun	FRO	F095	F09503	4.33	5.50	1.17	BT
722	Bhaktapur	Changunarayan-Phedigaun	FRO	F095	F09503	5.50	14.00	8.50	GR
723	Kavrepalanchok	Nagarkot-Kattike	FRO	F096	F09601	0.00	0.50	0.50	GR
724	Kavrepalanchok	Nagarkot-Kattike	FRO	F096	F09601	0.50	1.80	1.30	ER
725	Kathmandu	Kattike-Sankhu	FRO	F096	F09602	1.80	2.80	1.00	GR
726	Kathmandu	Kattike-Sankhu	FRO	F096	F09602	2.80	5.65	2.85	ER
727	Bhaktapur	Chyamasingh-Amaldol	FRN	F097	F09701	0.00	3.72	3.72	BT
728	Bhaktapur	Chyamasingh-Amaldol	FRN	F097	F09701	3.72	6.97	3.25	GR
729	Kavrepalanchok	Amaldol-Nala-Banepa	FRN	F097	F09702	6.97	9.97	3.00	BT
730	Kavrepalanchok	Amaldol-Nala-Banepa	FRN	F097	F09702	9.97	11.70	1.73	GR
731	Bhaktapur	Kamalbinayak-Sudal-Adikarigaun	FRO	F098	F09801	0.00	2.00	2.00	GR
732	Bhaktapur	Kamalbinayak-Sudal-Adikarigaun	FRO	F098	F09801	2.00	9.00	7.00	ER
733	Kavrepalanchok	Adikarigaun-Nagarkot	FRO	F098	F09802	9.00	12.00	3.00	ER
734	Bhaktapur	Trolley bus(ARM)-Suryabinayak-Chamelidanda(KVRR)	FRN	F099	F09901	0.00	4.50	4.50	BT
735	Bhaktapur	Trolley bus(ARM)-Suryabinayak-Chamelidanda(KVRR)	FRN	F099	F09901	4.50	10.50	6.00	GR
736	Lalitpur	Chamelidanda-Bhujunge(KVRR)	FRN	F099	F09902	10.50	11.50	1.00	PL
737	Bhaktapur	Sallaghari (ARM)-Katunje-Sumlingtar(KVRR)	FRN	F100	F10001	0.00	2.66	2.66	BT
738	Bhaktapur	Sallaghari (ARM)-Katunje-Sumlingtar(KVRR)	FRN	F100	F10001	2.66	4.00	1.34	GR
739	Lalitpur	Sumlingtar-Lubhu(KVRR)	FRN	F100	F10002	4.00	5.00	1.00	ER
740	Kathmandu	Manohara bridge (Balkumari)-Shankhamul	FRN	F101	F10101	0.00	0.50	0.50	BT
741	Kathmandu	Manohara bridge (Balkumari)-Shankhamul	FRN	F101	F10101	0.50	1.50	1.00	BT
742	Lalitpur	Shankhamul-Teku Dobhan-Balkhu	FRN	F101	F10102	1.50	5.60	4.10	BT
743	Lalitpur	Satdobato (Ring Road)-Dhapakhel - Thecho(KVRR)	FRN	F102	F10201	0.00	5.00	5.00	BT
744	Kathmandu	Jayanepal-Thapathali(KVRR)	FRN	F103	F10301	0.00	3.00	3.00	BT
745	Lalitpur	Thapathali-Tikabhairab(KVRR)	FRN	F103	F10302	3.00	10.80	7.80	BT
746	Lalitpur	Thapathali-Tikabhairab(KVRR)	FRN	F103	F10302	10.80	18.80	8.00	GR
747	Kathmandu	Kashibazar-Kirtipur-Machhegaun-Tinthana(KVRR)	FRN	F104	F10401	0.00	10.20	10.20	BT
748	Kathmandu	Kashibazar-Kirtipur-Machhegaun-Tinthana(KVRR)	FRN	F104	F10401	10.20	10.70	0.50	ER
749	Kathmandu	Nagdhunga(TRP)-Tankeswor(KVRR)	FRN	F105	F10501	0.00	3.00	3.00	BT
750	Kathmandu	Nagdhunga(TRP)-Tankeswor(KVRR)	FRN	F105	F10501	3.00	5.00	2.00	GR
751	Kathmandu	Nagdhunga(TRP)-Tankeswor(KVRR)	FRN	F105	F10501	5.00	11.00	6.00	ER
752	Dolakha	Charikot-Dolakha	FRN	F106	F10601	0.00	5.00	5.00	BT
753	Dolakha	Dolakha-Lamabagar-Lapchehaun (IB)	FRN	F106	F10602	5.00	15.00	10.00	GR
754	Dolakha	Dolakha-Lamabagar-Lapchehaun (IB)	FRN	F106	F10602	15.00	35.00	20.00	ER
755	Dolakha	Dolakha-Lamabagar-Lapchehaun (IB)	FRN	F106	F10602	35.00	90.00	55.00	PL
756	Dhanusa	Birendrabazar (MRM)-Yadukuha-Mahinathpur	FRN	F107	F10701	0.00	25.00	25.00	GR
757	Dhanusa	Birendrabazar (MRM)-Yadukuha-Mahinathpur	FRN	F107	F10701	25.00	42.00	17.00	ER
758	Dhanusa	Janakpur-Yadukaha	FRN	F108	F10801	0.00	2.50	2.50	GR
759	Dhanusa	Janakpur-Yadukaha	FRN	F108	F10801	2.50	18.00	15.50	ER
760	Dhanusa	Dharapani (MRM)-Dhanusadham-Janakpur	FRN	F109	F10901	0.00	25.00	25.00	BT
761	Dhanusa	Dharapani (MRM)-Dhanusadham-Janakpur	FRN	F109	F10901	25.00	26.00	1.00	GR
762	Dhanusa	Janakpur (H06)-Jatahi	FRN	F110	F11001	0.00	11.00	11.00	BT
763	Dhanusa	Janakpur (H06)-Jatahi	FRN	F110	F11001	11.00	14.00	3.00	GR
764	Mahottari	Jaleswor(H06)-Mattihani	FRN	F111	F11101	0.00	6.00	6.00	BT
765	Mahottari	Jaleswor(H06)-Mattihani	FRN	F111	F11101	6.00	7.00	1.00	GR
766	Dhanusa	Janakpur(H06)-Basbitti	FRN	F112	F11201	0.00	3.00	3.00	GR
767	Mahottari	Basbitti-Manara-Bathanaha	FRN	F112	F11202	3.00	6.00	3.00	GR
768	Mahottari	Basbitti-Manara-Bathanaha	FRN	F112	F11202	6.00	17.00	11.00	ER
769	Mahottari	Basbitti-Manara-Bathanaha	FRN	F112	F11202	17.00	20.00	3.00	PL
770	Dhanusa	Janakpur-Kurtha-Mahadaiya	FRN	F113	F11301	0.00	4.00	4.00	GR
771	Mahottari	Mahadaiya-Samsitola-Samsi	FRN	F113	F11302	4.00	13.00	9.00	GR
772	Mahottari	Mahadaiya-Samsitola-Samsi	FRN	F113	F11302	13.00	25.00	12.00	ER
773	Mahottari	Bardibas (MRM)-Jaleswor	FRN	F114	F11401	0.00	42.00	42.00	BT
774	Mahottari	Maithan (MRM)-Gaushala-Samsi	FRN	F115	F11501	0.00	26.00	26.00	GR
775	Sarlahi	Phuljor (MRM)-Bayalbas-Tribhuwannagar	FRN	F116	F11601	0.00	17.00	17.00	GR

SN	District Name	Link Name	Class	Road Ref No	Link Code	From	To	Length	Pavement Status
776	Sarlahi	Phuljor (MRM)-Bayalbas-Tribhuwannagar	FRN	F116	F11601	17.00	22.00	5.00	ER
777	Sarlahi	Phuljor (MRM)-Bayalbas-Tribhuwannagar	FRN	F116	F11601	22.00	24.00	2.00	PL
778	Sarlahi	Nayan Road (MRM)-Barathhawa-Madhuwan	FRN	F117	F11701	0.00	37.00	37.00	GR
779	Sarlahi	Nayan Road (MRM)-Barathhawa-Madhuwan	FRN	F117	F11701	37.00	42.00	5.00	ER
780	Bara	Tamagadhi (MRM)-Simraungadh (IB)	FRN	F118	F11801	0.00	31.00	31.00	GR
781	Bara	Tamagadhi (MRM)-Simraungadh (IB)	FRN	F118	F11801	31.00	32.00	1.00	ER
782	Bara	Tamagadhi (MRM)-Simraungadh (IB)	FRN	F118	F11801	32.00	40.00	8.00	UC
783	Bara	Manmat (MRM)-Kalaiya-Matiarwa (IB)	FRN	F119	F11901	0.00	5.00	5.00	BT
784	Bara	Manmat (MRM)-Kalaiya-Matiarwa (IB)	FRN	F119	F11901	5.00	28.00	23.00	GR
785	Makwanpur	Hetauda-Makawanpur Gadhi(Kanti Rajpath)	FRN	F120	F12001	0.00	13.50	13.50	BT
786	Makwanpur	Hetauda-Makawanpur Gadhi(Kanti Rajpath)	FRN	F120	F12001	13.50	15.00	1.50	GR
787	Makwanpur	Hetauda-Makawanpur Gadhi(Kanti Rajpath)	FRN	F120	F12001	15.00	17.50	2.50	GR
788	Makwanpur	Makawanpur Gadhi-Bagmati R (District Border)(Kanti Rajpath)	FRN	F120	F12002	17.50	32.50	15.00	GR
789	Makwanpur	Makawanpur Gadhi-Bagmati R (District Border)(Kanti Rajpath)	FRN	F120	F12002	32.50	50.20	17.70	ER
790	Lalitpur	Bagmati R (District Border)-Tikabhairab(Kanti Rajpath)	FRN	F120	F12003	50.20	82.40	32.20	ER
791	Kathmandu	Pharping(Dakshinkali)-Pakhelchaur	FRO	F121	F12101	0.00	3.00	3.00	ER
792	Makwanpur	Pakhelchaur-Kulekhani	FRO	F121	F12102	3.00	12.00	9.00	ER
793	Makwanpur	Bhimphedi-Kulekhani	FRO	F122	F12201	0.00	15.00	15.00	BT
794	Dhading	Dhading Besi-Aarughat	FRN	F123	F12301	0.00	20.00	20.00	GR
795	Dhading	Dhading Besi-Aarughat	FRN	F123	F12301	20.00	31.00	11.00	ER
796	Gorkha	Aarughat-Dharapani-Gorkha	FRN	F123	F12302	31.00	39.00	8.00	GR
797	Gorkha	Aarughat-Dharapani-Gorkha	FRN	F123	F12302	39.00	71.00	32.00	ER
798	Chitawan	Tandi, Ratnanagar (MRM)-Sauraha	FRN	F124	F12401	0.00	5.00	5.00	BT
799	Chitawan	Tandi, Ratnanagar (MRM)-Sauraha	FRN	F124	F12401	5.00	7.00	2.00	BT
800	Chitawan	Bharatpur-Meghauli Airport	FRN	F125	F12501	0.00	16.00	16.00	BT
801	Chitawan	Bharatpur-Meghauli Airport	FRN	F125	F12501	16.00	25.00	9.00	GR
802	Chitawan	Meghauli Airport-Dhruwa(PR)	FRN	F125	F12502	25.00	33.00	8.00	ER
803	Chitawan	Aauptari (H05)-Devghat	FRN	F126	F12601	0.00	4.00	4.00	BT
804	Tanahu	Dumre (PRM)-Bandipur	FRN	F127	F12701	0.00	8.00	8.00	BT
805	Tanahu	Damauli (PRM)-Jyamiretar(Byas Marg)	FRN	F128	F12801	0.00	8.73	8.73	BT
806	Tanahu	Damauli (PRM)-Jyamiretar(Byas Marg)	FRN	F128	F12801	8.73	15.05	6.32	GR
807	Tanahu	Damauli (PRM)-Jyamiretar(Byas Marg)	FRN	F128	F12801	15.05	16.13	1.08	ER
808	Lamjung	Jyamiretar-Neupanebesi(Byas Marg)	FRN	F128	F12802	16.13	27.05	10.92	ER
809	Lamjung	Neupanebesi-Bhorletar(Byas Marg)	FRN	F128	F12803	27.05	32.00	4.95	ER
810	Kaski	Talchok (PRM)-Khudimuhan (Beganas Lake)	FRN	F129	F12901	0.00	3.50	3.50	BT
811	Nawalparasi	Bhumahi (MRM)-Parasi	FRN	F130	F13001	0.00	7.00	7.00	BT
812	Nawalparasi	Parasi-Amawa	FRN	F130	F13002	7.00	14.40	7.40	BT
813	Rupandehi	Amawa-Bhairahawa (H10)	FRN	F130	F13003	14.40	29.15	14.75	BT
814	Syangja	Malunga (SRM)-Mirmi(Kaligandaki NS Corridor)	FRN	F131	F13101	0.00	19.00	19.00	BT
815	Syangja	Mirmi-Setibeni (Kaligandaki-Kushma)(Kaligandaki NS Corridor)	FRN	F131	F13102	19.00	27.00	8.00	UC
816	Syangja	Mirmi-Setibeni (Kaligandaki-Kushma)(Kaligandaki NS Corridor)	FRN	F131	F13102	27.00	33.00	6.00	PL
817	Parbat	Setibeni-Gupteswor(Kaligandaki-Kushma)(Kaligandaki NS Corridor)	FRN	F131	F13103	33.00	36.50	3.50	PL
818	Parbat	Setibeni-Gupteswor(Kaligandaki-Kushma)(Kaligandaki NS Corridor)	FRN	F131	F13103	36.50	71.50	35.00	ER
819	Gulmi	Ridi-Rudrabeni-Wami Taksar	FRN	F132	F13201	0.00	57.00	57.00	ER
820	Parbat	Maldhunga-Beni	FRO	F133	F13301	0.00	13.00	13.00	BT
821	Gulmi	Tamghas-Neta Gaun	FRO	F134	F13401	0.00	9.00	9.00	ER
822	Arghakhanchi	Neta Gaun-Sandhikhark	FRO	F134	F13402	9.00	51.00	42.00	ER
823	Arghakhanchi	Sandhikharka-Asurkot-Lamdanda	FRO	F134	F13403	51.00	84.00	33.00	PL
824	Pyuthan	Lamdanda-Bhedikhore-Pyuthan	FRO	F134	F13404	84.00	132.00	48.00	ER
825	Rupandehi	Ramapur (MRM)-Lumbini	FRN	F135	F13501	0.00	8.00	8.00	BT
826	Rupandehi	Ramapur (MRM)-Lumbini	FRN	F135	F13501	8.00	14.50	6.50	ER
827	Rupandehi	Ramapur (MRM)-Lumbini	FRN	F135	F13501	14.50	18.00	3.50	GR
828	Rupandehi	Shivgadhya-Padariya(Lumbini-Circumambulatory)	FRO	F136	F13601	0.00	6.00	6.00	GR
829	Rupandehi	Padariya-Shivgadhya(Lumbini-Circumambulatory)	FRO	F136	F13602	6.00	10.60	4.60	BT

SN	District Name	Link Name	Class	Road Ref No	Link Code	From	To	Length	Pavement Status
830	Rupandehi	Padariya-Shivgadhiya(Lumbini-Circumambulatory)	FRO	F136	F13602	10.60	12.60	2.00	GR
831	Kapilbastu	Pipara(MRM)-Pakadi(F04502)	FRN	F137	F13701	0.00	8.00	8.00	GR
832	Kapilbastu	Pipara(MRM)-Pakadi(F04502)	FRN	F137	F13701	8.00	19.56	11.56	ER
833	Kapilbastu	Pakadi(F04502)-Chakar Chauda (IB)	FRN	F137	F13702	19.56	27.00	7.44	ER
834	Dang	Lamahi (MRM)-Koilabas (IB)	FRN	F138	F13801	0.00	1.00	1.00	BT
835	Dang	Lamahi (MRM)-Koilabas (IB)	FRN	F138	F13801	1.00	19.00	18.00	GR
836	Dang	Lamahi (MRM)-Koilabas (IB)	FRN	F138	F13801	19.00	34.00	15.00	ER
837	Roipa	Holeri-Maichanne	FRO	F139	F13901	0.00	15.00	15.00	GR
838	Roipa	Holeri-Maichanne	FRO	F139	F13901	15.00	22.00	7.00	ER
839	Pyuthan	Maichanne-Sworgedwari-Jaluki (Bhingri)	FRO	F139	F13902	22.00	35.00	13.00	ER
840	Pyuthan	Maichanne-Sworgedwari-Jaluki (Bhingri)	FRO	F139	F13902	35.00	44.00	9.00	UC
841	Salyan	Sitalpati (Rapti Rajmarga)-Salyan	FRN	F140	F14001	0.00	9.00	9.00	BT
842	Dang	Tulasipur-Bijeneta	FRN	F141	F14101	0.00	44.00	44.00	GR
843	Salyan	Bijeneta-Kalche	FRN	F141	F14102	44.00	65.00	21.00	ER
844	Surkhet	Kalche-Botechaur	FRN	F141	F14103	65.00	82.70	17.70	GR
845	Surkhet	Kalche-Botechaur	FRN	F141	F14103	82.70	86.00	3.30	ER
846	Banke	Nepalgunj-Dondra	FRN	F142	F14201	0.00	4.00	4.00	BT
847	Banke	Nepalgunj-Dondra	FRN	F142	F14201	4.00	33.00	29.00	GR
848	Banke	Dondra-Bagauda	FRN	F142	F14202	33.00	36.50	3.50	GR
849	Banke	Dondra-Bagauda	FRN	F142	F14202	36.50	47.60	11.10	ER
850	Banke	Dondra-Bagauda	FRN	F142	F14202	47.60	50.00	2.40	UC
851	Banke	Ranjha (H12) - Nepalganj Airport	FRN	F143	F14301	0.00	2.00	2.00	BT
852	Dailekh	Tallo Dhungeshwor - Mathillo Dhungeshwor	FRN	F144	F14401	0.00	8.22	8.22	GR
853	Humla	Hilsa (IB)-Simikot	FRN	F145	F14501	0.00	40.00	40.00	ER
854	Humla	Hilsa (IB)-Simikot	FRN	F145	F14501	40.00	88.00	48.00	PL
855	Achham	Sanphebagar-Rakse	FRN	F146	F14601	0.00	14.00	14.00	BT
856	Bajura	Rakse-Martadi	FRN	F146	F14602	14.00	27.00	13.00	BT
857	Bajura	Rakse-Martadi	FRN	F146	F14602	27.00	57.00	30.00	ER
858	Bajura	Martadi-Kolti	FRN	F146	F14603	57.00	108.00	51.00	PL
859	Bajura	Kolti-Okhartola	FRN	F146	F14604	108.00	111.00	3.00	PL
860	Kailali	Sati(Khairipur)-Khakraula	FRN	F147	F14701	0.00	5.00	5.00	GR
861	Kailali	Muda (MRM)-Bhajani-Lalbojhi	FRN	F148	F14801	0.00	18.85	18.85	GR
862	Kailali	Lalbojhi-Gulariyaghat(IB)	FRN	F148	F14802	18.85	21.00	2.15	GR
863	Kailali	Sahajpur-B.P.Nagar	FRN	F149	F14901	0.00	28.00	28.00	ER
864	Doti	B.P.Nagar-Silgadhi(Dipayal)	FRN	F149	F14902	28.00	48.00	20.00	ER
865	Doti	B.P.Nagar-Silgadhi(Dipayal)	FRN	F149	F14902	48.00	53.00	5.00	UC
866	Doti	B.P.Nagar-Silgadhi(Dipayal)	FRN	F149	F14902	53.00	78.00	25.00	ER
867	Doti	B.P.Nagar-Silgadhi(Dipayal)	FRN	F149	F14902	78.00	108.00	30.00	PL
868	Kanchanpur	Kaluwapur(MRM)-Shreepur-Belauri (IB)	FRN	F150	F15001	0.00	27.00	27.00	GR
869	Kanchanpur	Kaluwapur(MRM)-Shreepur-Belauri (IB)	FRN	F150	F15001	27.00	30.00	3.00	ER
870	Kanchanpur	Daiji(MRM)-Naula	FRN	F151	F15101	0.00	10.00	10.00	GR
871	Kanchanpur	Daiji(MRM)-Naula	FRN	F151	F15101	10.00	22.60	12.60	ER
872	Dadeldhura	Naula-Jogbudha	FRN	F151	F15102	22.60	36.60	14.00	ER
873	Dadeldhura	Jogbuda-Lamjile	FRN	F151	F15103	36.60	62.60	26.00	ER
874	Doti	Lamjile-Buddar (MKRM)	FRN	F151	F15104	62.60	68.60	6.00	GR
875	Dhankuta	Leguwaghat-Kewabesi	FRO	F152	F15201	0.00	7.00	7.00	ER
876	Sankhuwasabha	Kewabesi-Sabha Khola(Boharatar)	FRO	F152	F15202	7.00	28.00	21.00	ER
877	Makwanpur	Bastipur-Makri-Pashupatinagar(Hetauda Bypass)	FRN	F153	F15301	0.00	15.00	15.00	PL
878	Jumla	Nagma-Bulbule	FRN	F154	F15401	0.00	54.00	54.00	ER
879	Jumla	Nagma-Bulbule	FRN	F154	F15401	54.00	65.00	11.00	UC
880	Mugu	Bulbule-Gamgadhi	FRN	F154	F15402	65.00	89.00	24.00	UC
881	Kanchanpur	Bramhadev-Karali	FRN	F155	F15501	0.00	8.00	8.00	PL
882	Dadeldhura	Karali-Jogbuda	FRN	F155	F15502	8.00	30.00	22.00	PL
883	Ilam	Phikkal (MERM)-Sriantu-Baudhadham	FRN	F156	F15601	0.00	2.50	2.50	BT
884	Ilam	Phikkal (MERM)-Sriantu-Baudhadham	FRN	F156	F15601	2.50	5.40	2.90	GR
885	Ilam	Phikkal (MERM)-Sriantu-Baudhadham	FRN	F156	F15601	5.40	30.00	24.60	ER
886	Ilam	Phikkal (MERM)-Sriantu-Baudhadham	FRN	F156	F15601	30.00	33.00	3.00	PL

SN	District Name	Link Name	Class	Road Ref No	Link Code	From	To	Length	Pavement Status
887	Ilam	Ilam (MERM)-Maipokhari-Sandakpur	FRN	F157	F15701	0.00	0.80	0.80	BT
888	Ilam	Ilam (MERM)-Maipokhari-Sandakpur	FRN	F157	F15701	0.80	8.00	7.20	GR
889	Ilam	Ilam (MERM)-Maipokhari-Sandakpur	FRN	F157	F15701	8.00	35.00	27.00	ER
890	Jhapa	Damak (MRM)-Refugee Camp	FRN	F158	F15801	0.00	6.50	6.50	BT
891	Ilam	Refugee Camp-Chisapani	FRN	F158	F15802	6.50	43.00	36.50	ER
892	Ilam	Refugee Camp-Chisapani	FRN	F158	F15802	43.00	44.00	1.00	PL
893	Ramechhap	Khurkot-Ramechhap-Sanghutar	FRN	F159	F15901	0.00	33.00	33.00	ER
894	Okhaldhunga	Sanghutar-Okhaldhunga	FRN	F159	F15902	33.00	42.00	9.00	UC
895	Okhaldhunga	Sanghutar-Okhaldhunga	FRN	F159	F15902	42.00	98.00	56.00	PL
896	Dhanusa	Baldehi-Chandrapur(Janakpur Circumulatory)	FRN	F160	F16001	0.00	6.00	6.00	PL
897	Dhanusa	Baldehi-Chandrapur(Janakpur Circumulatory)	FRN	F160	F16002	6.00	70.00	64.00	PL
898	Mahottari	Chandrapur-Majara(Janakpur Circumulatory)	FRN	F160	F16003	70.00	80.00	10.00	PL
899	Chitawan	Bhandara-Bumetar(Chepang Marg)	FRN	F161	F16101	0.00	1.50	1.50	BT
900	Chitawan	Bhandara-Bumetar(Chepang Marg)	FRN	F161	F16101	1.50	5.00	3.50	GR
901	Chitawan	Bumetar-Chuniyadhara(District Border)(Chepang Marg)	FRN	F161	F16102	34.00	35.00	1.00	GR
902	Chitawan	Bumetar-Chuniyadhara(District Border)(Chepang Marg)	FRN	F161	F16102	5.00	34.00	29.00	ER
903	Dhading	Chuniyadhara(District Border)-Malekhu(Chepang Marg)	FRN	F161	F16103	35.00	62.00	27.00	ER
904	Kaski	Beganastal-Ram Bajar	FRO	F162	F16201	0.00	4.00	4.00	GR
905	Kaski	Beganastal-Ram Bajar	FRO	F162	F16201	4.00	23.50	19.50	ER
906	Lamjung	Ram Bajar-Bhorletar	FRO	F162	F16202	23.50	24.50	1.00	GR
907	Lamjung	Ram Bajar-Bhorletar	FRO	F162	F16202	24.50	25.50	1.00	ER
908	Tanahu	Khairanitar (PRM)-Bhimad-Ghumarighat	FRN	F163	F16301	0.00	5.00	5.00	BT
909	Tanahu	Khairanitar (PRM)-Bhimad-Ghumarighat	FRN	F163	F16301	5.00	8.00	3.00	GR
910	Tanahu	Khairanitar (PRM)-Bhimad-Ghumarighat	FRN	F163	F16301	8.00	41.00	33.00	ER
911	Tanahu	Khairanitar (PRM)-Bhimad-Ghumarighat	FRN	F163	F16301	41.00	49.00	8.00	PL
912	Nawalparasi	Ghumarighat-Pangre-Nawalpur(Kawaswoti) (MRM)	FRN	F163	F16302	49.00	106.00	57.00	PL
913	Kaski	Gagangaunda (PRM)-Begnastal	FRN	F164	F16401	0.00	1.00	1.00	GR
914	Kaski	Gagangaunda (PRM)-Begnastal	FRN	F164	F16401	1.00	2.00	1.00	ER
915	Nawalparasi	Pratapur-Raninagar-Triveni	FRO	F165	F16501	0.00	6.00	6.00	GR
916	Nawalparasi	Pratapur-Raninagar-Triveni	FRO	F165	F16501	6.00	11.00	5.00	ER
917	Nawalparasi	Pratapur-Raninagar-Triveni	FRO	F165	F16501	11.00	19.00	8.00	UC
918	Mustang	Kagbeni-Muktinath	FRO	F166	F16601	0.00	26.00	26.00	PL
919	Nawalparasi	Gaindakot-Amalang (Kaligandaki NS Corridor)	FRN	F167	F16701	0.00	56.00	56.00	PL
920	Palpa	Amalang-Rampur (Kaligandaki NS Corridor)	FRN	F167	F16702	56.00	82.00	26.00	ER
921	Palpa	Rampur-Ramdi (SRM)	FRN	F167	F16703	82.00	108.00	26.00	ER
922	Bardiya	Bangadhi(MRM)-Mainapokhar	FRN	F168	F16801	0.00	0.74	0.74	BT
923	Bardiya	Bangadhi(MRM)-Mainapokhar	FRN	F168	F16801	0.74	8.40	7.66	GR
924	Bardiya	Kothiya-Thakurdwara-Amreni(MRM)	FRN	F169	F16901	0.00	2.00	2.00	GR
925	Bardiya	Kothiya-Thakurdwara-Amreni(MRM)	FRN	F169	F16901	2.00	8.00	6.00	ER
926	Bardiya	Kothiya-Thakurdwara-Amreni(MRM)	FRN	F169	F16901	8.00	18.60	10.60	GR
927	Bardiya	Kothiya-Thakurdwara-Amreni(MRM)	FRN	F169	F16901	18.60	21.00	2.40	BT
928	Surkhet	Baddichour-Gutu	FRN	F170	F17001	0.00	14.00	14.00	GR
929	Surkhet	Baddichour-Gutu	FRN	F170	F17001	14.00	30.00	16.00	ER
930	Bardiya	Bhuregaun (MRM)-Telpani	FRN	F171	F17101	0.00	1.00	1.00	BT
931	Bardiya	Bhuregaun (MRM)-Telpani	FRN	F171	F17101	1.00	5.00	4.00	GR
932	Bardiya	Bhuregaun (MRM)-Telpani	FRN	F171	F17101	5.00	21.00	16.00	ER
933	Bardiya	Bhuregaun (MRM)-Telpani	FRN	F171	F17101	21.00	37.00	16.00	PL
934	Surkhet	Telpani-Bangesimal(Surkhet)	FRN	F171	F17102	37.00	68.00	31.00	PL
935	Kailikot	Khulalu (KARM)-Patlibadi(Gadwali)	FRN	F172	F17201	0.00	7.00	7.00	ER
936	Kailikot	Khulalu (KARM)-Patlibadi(Gadwali)	FRN	F172	F17201	7.00	36.00	29.00	UC
937	Bajura	Patlibadi(Gadwali)-Kolti(Okhartola)	FRN	F172	F17202	36.00	81.00	45.00	PL
938	Bajura	Kolti(Okhartola)-Boldhik(District Border)	FRN	F172	F17203	81.00	91.00	10.00	PL
939	Mugu	Boldhik(District Border)-Sukhadhik-Dulya	FRN	F172	F17204	91.00	111.00	20.00	PL
940	Humla	Dulya-Simikot	FRN	F172	F17205	111.00	196.00	85.00	PL
941	Mugu	Gamgadhi-Sukadik	FRN	F173	F17301	0.00	65.00	65.00	PL

SN	District Name	Link Name	Class	Road Ref No	Link Code	From	To	Length	Pavement Status
942	Doti	Silgadhi-Khaptad	FRN	F174	F17401	0.00	8.00	8.00	ER
943	Doti	Silgadhi-Khaptad	FRN	F174	F17401	8.00	30.00	22.00	PL
944	Baitadi	Patan-Pancheswor	FRN	F175	F17501	0.00	32.00	32.00	ER
945	Baitadi	Patan-Pancheswor	FRN	F175	F17501	32.00	62.00	30.00	PL
946	Dadeldhura	Ugratara-Totihali	FRN	F176	F17601	0.00	24.00	24.00	ER
947	Dadeldhura	Ugratara-Totihali	FRN	F176	F17601	24.00	29.00	5.00	UC
948	Dadeldhura	Ugratara-Totihali	FRN	F176	F17601	29.00	43.00	14.00	PL
949	Baitadi	Totihali-Melauli	FRN	F176	F17602	43.00	65.00	22.00	PL
950	Jumla	Jumla Khalanga-Gamgadhi	FRN	F177	F17701	0.00	55.00	55.00	PL
951	Khotang	Bijulebhanjyang-Lamidanda	FRN	F178	F17801	0.00	10.46	10.46	ER
952	Dang	Ghorahi-Khumbas(Sahidmarg)	FRN	F179	F17901	0.00	24.00	24.00	GR
953	Roipa	Khumbas-Holeri(Sahidmarg)	FRN	F179	F17902	24.00	34.00	10.00	GR
954	Roipa	Holeri-Thabang(District Border)(Sahidmarg)	FRN	F179	F17903	34.00	93.00	59.00	GR
955	Roipa	Holeri-Thabang(District Border)(Sahidmarg)	FRN	F179	F17903	93.00	115.00	22.00	UC
956	Roipa	Holeri-Thabang(District Border)(Sahidmarg)	FRN	F179	F17903	115.00	118.00	3.00	ER
957	Roipa	Holeri-Thabang(District Border)(Sahidmarg)	FRN	F179	F17903	118.00	147.00	29.00	PL
958	Rukum	Thabang(District Border)-Dharmashala-Khabang(Sahidmarg)	FRN	F179	F17904	147.00	175.00	28.00	PL
959	Rukum	Thabang(District Border)-Dharmashala-Khabang(Sahidmarg)	FRN	F179	F17904	175.00	177.00	2.00	ER
960	Kathmandu	Thankot-Chitlang Bhanjyang(Ganesh M.Singh Marg)	FRN	F180	F18001	0.00	2.00	2.00	BT
961	Kathmandu	Thankot-Chitlang Bhanjyang(Ganesh M.Singh Marg)	FRN	F180	F18001	2.00	4.00	2.00	GR
962	Kathmandu	Thankot-Chitlang Bhanjyang(Ganesh M.Singh Marg)	FRN	F180	F18001	4.00	6.00	2.00	ER
963	Makwanpur	Chitlang Bhanjyang-Chandragadhi-Markhu(Ganesh M.Singh Marg)	FRN	F180	F18002	6.00	20.00	14.00	ER
964	Nuwakot	Tadi-Labdhu-Samundrar-Golphubhanjyang	FRO	F181	F18101	0.00	4.20	4.20	BT
965	Nuwakot	Tadi-Labdhu-Samundrar-Golphubhanjyang	FRO	F181	F18101	4.20	9.20	5.00	GR
966	Nuwakot	Tadi-Labdhu-Samundrar-Golphubhanjyang	FRO	F181	F18101	9.20	22.20	13.00	ER
967	Nuwakot	Tadi-Labdhu-Samundrar-Golphubhanjyang	FRO	F181	F18101	22.20	32.20	10.00	PL
968	Dailekh	Talodungeshwor-Dullu	FRN	F182	F18201	0.00	16.00	16.00	BT
969	Dailekh	Talodungeshwor-Dullu	FRN	F182	F18201	16.00	18.00	2.00	ER
970	Surkhet	Shivanagar-Gumi-Patihalnachaur	FRO	F183	F18301	0.00	16.00	16.00	ER
971	Surkhet	Shivanagar-Gumi-Patihalnachaur	FRO	F183	F18301	16.00	45.00	29.00	PL
972	Gorkha	11 Kilo(F035)-Chhепetar-Bhaluswara-Barpak	FRO	F184	F18401	0.00	3.00	3.00	BT
973	Gorkha	11 Kilo(F035)-Chhепetar-Bhaluswara-Barpak	FRO	F184	F18401	3.00	35.50	32.50	GR
974	Gorkha	11 Kilo(F035)-Chhепetar-Bhaluswara-Barpak	FRO	F184	F18401	35.50	48.60	13.10	ER
975	Syangja	Putalikhet-Karkineta	FRN	F185	F18501	0.00	23.00	23.00	ER
976	Syangja	Putalikhet-Karkineta	FRN	F185	F18501	23.00	26.00	3.00	UC
977	Parbat	Karkineta-Majhbeni(Kusma)	FRN	F185	F18502	26.00	31.00	5.00	UC
978	Parbat	Karkineta-Majhbeni(Kusma)	FRN	F185	F18502	31.00	47.00	16.00	PL
979	Syangja	Mirdi-Chitre Bhanjyang	FRN	F186	F18601	0.00	2.00	2.00	GR
980	Syangja	Mirdi-Chitre Bhanjyang	FRN	F186	F18601	2.00	36.00	34.00	ER
981	Syangja	Mirdi-Chitre Bhanjyang	FRN	F186	F18601	36.00	41.00	5.00	PL
982	Tanahu	Chitre Bhanjyang-Bhimad	FRN	F186	F18602	41.00	59.00	18.00	PL
983	Saptari	Trafficchok(MRM)-Bananiya (IB)	FRN	F187	F18701	0.00	21.00	21.00	ER
984	Sarlahi	Banke (MRM) - Sangrampur (IB)	FRN	F188	F18801	0.00	22.00	22.00	ER
985	Bara	GadhiMai - Kawahigoth (IB)	FRN	F189	F18901	0.00	10.00	10.00	ER
986	Nawalparasi	Dumkibas (MRM) - Tribeni	FRN	F190	F19001	0.00	22.00	22.00	ER
987	Nawalparasi	Kathawa (IB)-Tribeni	FRO	F191	F19101	0.00	19.00	19.00	PL
988	Bardiya	Rajapur-Daulatpur	FRN	F192	F19201	0.00	7.00	7.00	PL
989	Kailali	Daulatpur-Sati	FRN	F192	F19202	7.00	13.00	6.00	GR
990	Rukum	Bas khola-Chaurjahari	FRO	F193	F19301	0.00	2.00	2.00	ER
991	Salyan	Devisthal-Bas khola	FRO	F193	F19302	2.00	42.00	40.00	ER
992	Rupandehi	Saljhandi- Satyawati(District Border)	FRN	F194	F19401	0.00	3.50	3.50	BT
993	Rupandehi	Saljhandi- Satyawati(District Border)	FRN	F194	F19401	3.50	4.50	1.00	GR
994	Rupandehi	Saljhandi- Satyawati(District Border)	FRN	F194	F19401	4.50	11.50	7.00	ER
995	Palpa	Satyawati(District Border)-Badahare R (District Border)	FRN	F194	F19402	11.50	23.50	12.00	ER
996	Arghakhanchi	Badahare R (District Border)-Khachi R	FRN	F194	F19403	23.50	67.50	44.00	ER

SN	District Name	Link Name	Class	Road Ref No	Link Code	From	To	Length	Pavement Status
997	Arghakhanchi	Sandhikhark-Sautamare(District Border)	FRN	F194	F19404	67.50	68.50	1.00	GR
998	Arghakhanchi	Sandhikhark-Sautamare(District Border)	FRN	F194	F19404	68.50	91.50	23.00	ER
999	Gulmi	Sautamare(District Border)-Darling(District Border)	FRN	F194	F19405	91.50	108.00	16.50	ER
1000	Gulmi	Sautamare(District Border)-Darling(District Border)	FRN	F194	F19405	108.00	126.50	18.50	PL
1001	Baglung	Darling(District Border)-Dhara(MH Junction)	FRN	F194	F19406	126.50	151.50	25.00	PL
1002	Baglung	Dhara(MH Junction)-Dhorpatan(Uttar Ganga R)	FRN	F194	F19407	151.50	178.50	27.00	PL
1003	Kailali	Tikapur-Muda (MRM)	FRN	F195	F19501	0.00	4.00	4.00	GR
1004	Kailali	Tikapur-Muda (MRM)	FRN	F195	F19501	4.00	14.00	10.00	ER
1005	Kailali	Muda(MRM)-Khimadi-Karnali R(District Border)	FRN	F195	F19502	14.00	18.00	4.00	ER
1006	Kailali	Muda(MRM)-Khimadi-Karnali R(District Border)	FRN	F195	F19502	18.00	27.00	9.00	GR
1007	Kailali	Muda(MRM)-Khimadi-Karnali R(District Border)	FRN	F195	F19502	27.00	31.00	4.00	ER
1008	Kailali	Muda(MRM)-Khimadi-Karnali R(District Border)	FRN	F195	F19502	31.00	65.00	34.00	PL
1009	Doti	Khimadi-Karnali R(District Border)-Selli-Seti R(District Borde	FRN	F195	F19503	65.00	100.00	35.00	PL
1010	Achham	Selli-Seti R(District Border)-Saphe Bagar	FRN	F195	F19504	100.00	108.00	8.00	PL
1011	Achham	Selli-Seti R(District Border)-Saphe Bagar	FRN	F195	F19504	108.00	123.00	15.00	ER
1012	Bajura	Simalkot(Saphe Bajar)-Dadakot(District Border)	FRN	F195	F19505	123.00	145.00	22.00	PL
1013	Bajhang	Dadakot(District Border)-Gothalaket(F049 Junction)	FRN	F195	F19506	145.00	180.00	35.00	PL
1014	Bajhang	Chainpur(F049)-Saipal-Urai Bhanjyang-Taklakot	FRN	F195	F19507	180.00	264.00	84.00	PL
1015	Dhading	Benighat-District Border		F196	F19601	0.00	0.20	0.20	ER
1016	Gorkha	District Border-Arughat	FRN	F196	F19602	0.20	40.20	40.00	ER
1017	Gorkha	Arughat-Larke Bhanjyang(IB)	FRN	F196	F19603	40.20	65.00	24.80	ER
1018	Gorkha	Arughat-Larke Bhanjyang(IB)	FRN	F196	F19603	65.00	165.00	100.00	PL
1019	Palpa	Aryabhanjyang (SRM)-Dhobadi	FRN	F197	F19701	0.00	14.00	14.00	BT
1020	Palpa	Dhobadi-Rampur	FRN	F197	F19702	14.00	41.00	27.00	ER
1021	Parsa	Birgunj Bypass	FRN	F198	F19801	0.00	7.21	7.21	BT
1022	Morang	Gandhi Manamohan Marga	FRN	F199	F19901	0.00	25.00	25.00	PL
1023	Kapilbastu	Kharindrapur(MRM)-Shitalpur-Bilmi	FRN	F200	F20001	0.00	18.00	18.00	PL
1024	Dolakha	Jiri-Puma-Khahare	FRN	F201	F20101	0.00	54.00	54.00	PL
1025	Ramechhap	Khahare-Dhaule-Pekarnas	FRN	F201	F20102	54.00	90.50	36.50	PL
1026	Solukhumbu	Pekarnas-Junbesi-Salleri	FRN	F201	F20103	90.50	160.00	69.50	PL
1027	Dolakha	Jiri-Siurani	FRN	F202	F20201	0.00	11.00	11.00	PL
1028	Ramechhap	Siurani-Those-Bamti Road	FRN	F202	F20202	11.00	44.00	33.00	PL
1029	Bardiya	Gulariya-Bagahighat-Jabdi-Rammapur	FRN	F203	F20301	0.00	22.00	22.00	PL
1030	Kailali	Khutiya-B.P.Nagar-Gadhasera	FRN	F204	F20401	0.00	4.00	4.00	ER
1031	Kailali	Khutiya-B.P.Nagar-Gadhasera	FRN	F204	F20401	4.00	32.00	28.00	PL
1032	Doti	Gadhasera-Napani-Dipayal	FRN	F204	F20402	32.00	37.00	5.00	ER
1033	Doti	Gadhasera-Napani-Dipayal	FRN	F204	F20402	37.00	93.00	56.00	PL
1034	Doti	Gadhasera-Napani-Dipayal	FRN	F204	F20402	93.00	95.00	2.00	ER
1035	Bara	Nijgadh-Hanumanganj-Khaira	FRN	F205	F20501	0.00	8.00	8.00	PL
1036	Rautahat	Khaira-Shitalpur-Pataura-Bankul-Gaur	FRN	F205	F20502	8.00	56.00	48.00	PL
1037	Rautahat	Gaur-Pipara-Samanpur-Santapur-Nunthar Road	FRN	F206	F20601	0.00	38.00	38.00	PL
1038	Parsa	Parsa Border-Parsauni-Jagannathpur-Bara Border	FRN	F207	F20701	0.00	32.00	32.00	PL
1039	Bara	Bara Border-Bahuari-Parsa Border	FRN	F207	F20702	32.00	34.50	2.50	PL
1040	Parsa	Parsa Border-Bara Border	FRN	F207	F20703	34.50	35.00	0.50	PL
1041	Bara	Bara Border-Gamhariya-Benaulichok-Rautahat Bordor	FRN	F207	F20704	35.00	74.50	39.50	PL
1042	Rautahat	Rautahat Bordor-Bankul-Kopawa	FRN	F207	F20705	74.50	80.00	5.50	PL
1043	Nawalparasi	Triveni-Sanahi-Gandak Nahar Sadak-Nawalparasi	FRN	F208	F20801	0.00	81.00	81.00	PL

ANNEX-3

Roadwise District Coverage

Roadwise District Coverage

(in Kilometres)

SN	Districts	BT	GR	ER	Sub-Total	UC	PL	Total
Road Reference : H01 : Mahendra Rajmarg (MRM)								
1	Jhapa	54.75	0.00	0.00	54.75	0.00	0.00	54.75
2	Morang	36.30	0.00	0.00	36.30	0.00	0.00	36.30
3	Sunsari	43.88	0.00	0.00	43.88	0.00	0.00	43.88
4	Saptari	59.04	0.00	0.00	59.04	0.00	0.00	59.04
5	Siraha	43.27	0.00	0.00	43.27	0.00	0.00	43.27
6	Dhanusa	28.58	0.00	0.00	28.58	0.00	0.00	28.58
7	Mahottari	17.48	0.00	0.00	17.48	0.00	0.00	17.48
8	Sarlahi	30.23	0.00	0.00	30.23	0.00	0.00	30.23
9	Makwanpur	50.58	0.00	0.00	50.58	0.00	0.00	50.58
10	Rautahat	26.39	0.00	0.00	26.39	0.00	0.00	26.39
11	Bara	47.05	0.00	0.00	47.05	0.00	0.00	47.05
12	Chitawan	35.92	0.00	0.00	35.92	0.00	0.00	35.92
13	Nawalparasi	98.47	0.00	0.00	98.47	0.00	0.00	98.47
14	Rupandehi	43.51	0.00	0.00	43.51	0.00	0.00	43.51
15	Kapilbastu	60.84	0.00	0.00	60.84	0.00	0.00	60.84
16	Arghakhanchi	4.12	0.00	0.00	4.12	0.00	0.00	4.12
17	Dang	72.98	0.00	0.00	72.98	0.00	0.00	72.98
18	Banke	83.02	0.00	0.00	83.02	0.00	0.00	83.02
19	Bardiya	64.34	0.00	0.00	64.34	0.00	0.00	64.34
20	Kailali	82.60	0.00	0.00	82.60	0.00	0.00	82.60
22	Kanchanpur	44.32	0.00	0.00	44.32	0.00	0.00	44.32
H01 Total		1027.67	0.00	0.00	1027.67	0.00	0.00	1027.67
Road Reference : H02 : Tribhuvan Rajpath (TRP)								
1	Kathmandu	14.46	0.00	0.00	14.46	0.00	0.00	14.46
2	Dhading	27.77	0.00	0.00	27.77	0.00	0.00	27.77
3	Makwanpur	89.39	0.00	0.00	89.39	0.00	0.00	89.39
4	Bara	19.41	0.00	0.00	19.41	0.00	0.00	19.41
5	Parsa	8.63	0.00	0.00	8.63	0.00	0.00	8.63
H02 Total		159.66	0.00	0.00	159.66	0.00	0.00	159.66
Road Reference : H03 : Araniko Rajmarg (ARM)								
1	Sindhupalchok	53.93	2.00	0.00	55.93	0.00	0.00	55.93
2	Kavrepalanchok	38.39	0.00	0.00	38.39	0.00	0.00	38.39
3	Bhaktapur	14.12	0.00	0.00	14.12	0.00	0.00	14.12
4	Kathmandu	4.39	0.00	0.00	4.39	0.00	0.00	4.39
H03 Total		110.83	2.00	0.00	112.83	0.00	0.00	112.83
Road Reference : H04 : Prithvi Rajmarg (PRM)								
1	Dhading	66.61	0.00	0.00	66.61	0.00	0.00	66.61
2	Chitawan	16.68	0.00	0.00	16.68	0.00	0.00	16.68
3	Tanahu	71.25	0.00	0.00	71.25	0.00	0.00	71.25
4	Kaski	18.89	0.00	0.00	18.89	0.00	0.00	18.89
H04 Total		173.43	4.00	0.00	173.43	0.00	0.00	173.43
Road Reference : H05 : Narayanghat-Mugling Rajmarg (NMRM)								
1	Chitawan	36.16	0.00	0.00	36.16	0.00	0.00	36.16
H05 Total		36.16	0.00	0.00	36.16	0.00	0.00	36.16
Road Reference : H06 : Dhulikhel-Sindhuli-Bhittamod Rajmarg(DSRM)								
1	Dhanusa	34.56	0.00	0.00	34.56	0.00	0.00	34.56
2	Mahottari	30.31	0.00	0.00	30.31	0.00	0.00	30.31
3	Sindhuli	67.50	6.00	23.50	97.00	0.00	0.00	97.00
4	Kavrepalanchok	47.00	0.00	0.00	47.00	0.00	0.00	47.00
H06 Total		179.37	6.00	23.50	208.87	0.00	0.00	208.87

SN	Districts	BT	GR	ER	Sub-Total	UC	PL	Total
Road Reference : H07 : Mechi Rajmarg (MERM)								
1	Jhapa	29.50	0.00	17.00	46.50	0.00	102.00	148.50
2	Ilam	91.86	0.00	0.00	91.86	0.00	0.00	91.86
3	Panchthar	94.70	0.00	0.00	94.70	0.00	0.00	94.70
4	Taplejung	31.32	24.68	0.00	56.00	0.00	0.00	56.00
H07 Total		247.38	24.68	17.00	289.06	0.00	102.00	391.06
Road Reference : H08 : Koshi Rajmarg (KRM)								
1	Morang	18.04	0.00	0.00	18.04	0.00	0.00	18.04
2	Sunsari	45.15	0.00	0.00	45.15	0.00	0.00	45.15
3	Dhankuta	48.27	0.00	0.00	48.27	0.00	0.00	48.27
H08 Total		111.46	0.00	0.00	111.46	0.00	0.00	111.46
Road Reference : H09 : Sagarmatha Rajmarg (SARM)								
1	Khotang	0.00	0.00	77.00	77.00	0.00	0.00	77.00
2	Udayapur	21.86	24.00	24.00	69.86	20.00	0.00	89.86
3	Saptari	12.11	0.00	0.00	12.11	0.00	0.00	12.11
H09 Total		33.97	24.00	101.00	158.97	20.00	0.00	178.97
Road Reference : H10 : Siddhartha Rajmarg (SRM)								
1	Syangja	78.94	0.00	0.00	78.94	0.00	0.00	78.94
2	Kaski	16.51	0.00	0.00	16.51	0.00	0.00	16.51
3	Palpa	58.93	0.00	0.00	58.93	0.00	0.00	58.93
4	Rupandehi	26.84	0.00	0.00	26.84	0.00	0.00	26.84
H10 Total		181.22	0.00	0.00	181.22	0.00	0.00	181.22
Road Reference : H11 : Rapti Rajmarg (RPRM)								
1	Rukum	0.00	20.00	11.40	31.40	0.00	0.00	31.40
2	Salyan	37.16	54.50	0.00	91.66	0.00	0.00	91.66
3	Dang	45.62	0.00	0.00	45.62	0.00	0.00	45.62
H11 Total		82.78	74.50	11.40	168.68	0.00	0.00	168.68
Road Reference : H12 : Ratna Rajmarg (RRM)								
1	Banke	45.39	0.00	0.00	45.39	0.00	0.00	45.39
2	Bardiya	23.55	0.00	0.00	23.55	0.00	0.00	23.55
3	Surkhet	44.14	0.00	0.00	44.14	0.00	0.00	44.14
H12 Total		113.08	0.00	0.00	113.08	0.00	0.00	113.08
Road Reference : H13 : Karnali Rajmarg (KARM)								
1	Surkhet	46.00	0.00	0.00	46.00	0.00	0.00	46.00
2	Dailekh	62.68	20.76	2.56	86.00	0.00	0.00	86.00
3	Jumla	0.00	0.00	31.00	31.00	0.00	0.00	31.00
4	Kalikot	0.00	0.00	70.00	70.00	0.00	0.00	70.00
H13 Total		108.68	20.76	103.56	233.00	0.00	0.00	233.00
Road Reference : H14 : Mahakali Rajmarg (MKRM)								
1	Doti	33.46	0.00	0.00	33.46	0.00	0.00	33.46
2	Kailali	68.18	0.00	0.00	68.18	0.00	0.00	68.18
3	Dadeldhura	52.12	0.00	0.00	52.12	0.00	0.00	52.12
4	Baitadi	99.97	0.00	0.00	99.97	0.00	0.00	99.97
5	Darchula	10.00	50.00	18.42	78.42	8.00	75.00	161.42
H14 Total		263.73	50.00	18.42	332.15	8.00	75.00	415.15
Road Reference : H15 : Seti Rajmarg (SERM)								
1	Doti	41.00	0.00	0.00	41.00	0.00	0.00	41.00
2	Dadeldhura	24.96	0.00	0.00	24.96	0.00	0.00	24.96
H15 Total		65.96	0.00	0.00	65.96	0.00	0.00	65.96
Road Reference : H16 : Kathmandu Ringroad								
1	Lalitpur	7.00	0.00	0.00	7.00	0.00	0.00	7.00
2	Kathmandu	21.00	0.00	0.00	21.00	0.00	0.00	21.00
H16 Total		28.00	0.00	0.00	28.00	0.00	0.00	28.00

SN	Districts	BT	GR	ER	Sub-Total	UC	PL	Total
Road Reference : H17 : Ratuwa River-Rangeli (Postal)								
1	Jhapa	0.00	15.00	17.00	32.00	10.00	6.00	48.00
2	Morang	21.00	3.00	0.00	24.00	0.00	0.00	24.00
3	Sunsari	0.00	12.00	10.00	22.00	6.00	3.00	31.00
4	Saptari	2.00	14.00	9.00	25.00	0.00	0.00	25.00
5	Siraha	0.00	19.00	14.00	33.00	0.00	0.00	33.00
6	Dhanusa	5.00	9.00	11.00	25.00	3.00	2.00	30.00
7	Mahottari	4.00	20.00	3.50	27.50	0.00	0.50	28.00
8	Sarlahi	0.00	30.00	6.00	36.00	0.50	4.50	41.00
9	Rautahat	0.00	9.00	7.00	16.00	11.00	6.00	33.00
10	Bara	3.00	14.00	5.00	22.00	1.00	2.00	25.00
11	Parsa	9.00	13.00	2.00	24.00	6.00	30.00	60.00
12	Chitawan	18.00	43.00	0.00	61.00	0.00	0.00	61.00
13	Nawalparasi	0.00	12.00	2.00	14.00	0.00	0.00	14.00
14	Kapilbastu	0.00	26.50	10.00	36.50	10.00	8.00	54.50
15	Dang	0.00	50.00	5.00	55.00	1.00	2.00	58.00
16	Banke	0.00	10.00	23.00	33.00	2.00	2.00	37.00
17	Bardiya	0.00	11.00	1.00	12.00	0.00	4.00	16.00
18	Kailali	5.70	16.00	14.00	35.70	25.00	4.00	64.70
19	Kanchanpur	0.00	52.00	6.50	58.50	0.50	3.00	62.00
H17 Total		67.70	378.50	146.00	592.20	76.00	77.00	745.20
Road Reference : H18 : Puspahal Lokmarg (Midhill)								
1	Panchthar	0.00	0.00	66.40	66.40	0.00	0.00	66.40
2	Dhankuta	9.50	16.50	0.00	26.00	0.00	0.00	26.00
3	Terhathum	0.00	0.00	94.60	94.60	0.00	0.00	94.60
4	Bhojpur	0.00	7.50	108.50	116.00	0.00	0.00	116.00
5	Okhaldhunga	9.00	6.00	0.00	15.00	0.00	0.00	15.00
6	Khotang	13.00	0.00	96.30	109.30	0.00	0.00	109.30
7	Udayapur	0.00	0.00	2.00	2.00	0.00	0.00	2.00
8	Sindhuli	0.00	0.00	61.00	61.00	0.00	0.00	61.00
9	Baglung	0.00	0.00	142.00	142.00	7.00	0.00	149.00
10	Rukum	0.00	0.00	150.00	150.00	0.00	0.00	150.00
11	Dailekh	0.00	0.00	114.00	114.00	0.00	0.00	114.00
12	Jajarkot	0.00	0.00	45.00	45.00	25.00	0.00	70.00
13	Achham	35.00	0.00	52.00	87.00	0.00	0.00	87.00
H18 Total		66.50	30.00	931.80	1028.30	32.00	0.00	1060.30
Road Reference : H19 : Shabha (MRM) Bramhadev								
1	Kanchanpur	0.00	0.00	0.00	0.00	0.00	13.30	13.30
H19 Total		0.00	0.00	0.00	0.00	0.00	13.30	13.30
Road Reference : H20 : Kathmandu Terai Fast Track								
1	Kathmandu	0.00	0.00	0.00	0.00	0.00	11.00	11.00
2	Makwanpur	0.00	0.00	0.00	0.00	0.00	56.00	56.00
3	Bara	0.00	0.00	0.00	0.00	0.00	14.80	14.80
H20 Total		0.00	0.00	0.00	0.00	0.00	81.80	81.80
Road Reference : H21 : Kathmandu Outer Ringroad								
1	Lalitpur	0.00	11.00	0.00	11.00	0.00	0.00	11.00
2	Bhaktapur	0.00	0.00	0.00	0.00	0.00	22.00	22.00
3	Kathmandu	0.00	0.00	0.00	0.00	0.00	39.00	39.00
H21 Total		0.00	11.00	0.00	11.00	0.00	61.00	72.00
Road Reference : F001 : Birtamod - Chandragadhi								
1	Jhapa	12.53	0.00	0.00	12.53	0.00	0.00	12.53
F001 Total		12.53	0.00	0.00	12.53	0.00	0.00	12.53

SN	Districts	BT	GR	ER	Sub-Total	UC	PL	Total
Road Reference : F002 : Damak - Gaurigunj								
1	Jhapa	21.96	0.00	0.00	21.96	0.00	0.00	21.96
F002 Total		21.96	0.00	0.00	21.96	0.00	0.00	21.96
Road Reference : F003 : Bhardaha - Rajbiraj								
1	Saptari	17.75	0.00	0.00	17.75	0.00	0.00	17.75
F003 Total		17.75	0.00	0.00	17.75	0.00	0.00	17.75
Road Reference : F004 : Rupani - Kunauli								
1	Saptari	23.10	0.00	0.00	23.10	0.00	0.00	
F004 Total		23.10	0.00	0.00	23.10	0.00	0.00	23.10
Road Reference : F005 : Chauharwa - Madar								
1	Siraha	26.66	0.00	0.00	26.66	0.00	0.00	26.66
F005 Total		26.66	0.00	0.00	26.66	0.00	0.00	26.66
Road Reference : F006 : Nawalpur - Malangwa - Sonbarsa								
1	Sarlahi	27.99	1.20	0.00	29.19	0.00	0.00	29.19
F006 Total		27.99	1.20	0.00	29.19	0.00	0.00	29.19
Road Reference : F007 : Chandranigahapur - Gaur - Bairganiya								
1	Rautahat	45.44	0.00	0.00	45.44	0.00	0.00	45.44
F007 Total		45.44	0.00	0.00	45.44	0.00	0.00	45.44
Road Reference : F008 : Bardaghat - Surajpur - Harpur								
1	Nawalparasi	19.25	3.80	0.00	23.05	0.00	0.00	23.05
F008 Total		19.25	3.80	0.00	23.05	0.00	0.00	23.05
Road Reference : F009 : Sunwal - Parasi - Mahespur								
1	Nawalparasi	18.95	2.00	0.00	20.95	0.00	0.00	20.95
F009 Total		18.95	2.00	0.00	20.95	0.00	0.00	20.95
Road Reference : F010 : Jitpur - Khunuwa								
1	Kapilbastu	24.89	8.50	0.00	33.39	0.00	0.00	33.39
F010 Total		24.89	8.50	0.00	33.39	0.00	0.00	33.39
Road Reference : F011 : Taulihawa - Gorusinghe - Sandhikharka								
1	Kapilbastu	15.34	11.00	0.00	26.34	0.00	0.00	26.34
2	Arghakhanchi	54.79	2.00	0.00	56.79	0.00	0.00	56.79
F011 Total		70.13	13.00	0.00	83.13	0.00	0.00	83.13
Road Reference : F012 : Chanauta - Krishnanagar								
1	Kapilbastu	20.06	0.00	0.00	20.06	0.00	0.00	20.06
F012 Total		20.06	0.00	0.00	20.06	0.00	0.00	20.06
Road Reference : F013 : Bhaluwang - Liwang								
1	Pyuthan	60.43	0.00	0.00	60.43	0.00	0.00	60.43
2	Rolpa	38.41	0.00	24.00	62.41	0.00	0.00	62.41
3	Dang	8.00	0.00	0.00	8.00	0.00	0.00	8.00
F013 Total		106.84	0.00	24.00	130.84	0.00	0.00	130.84
Road Reference : F014 : Pyuthan - Chakchake - Ghorahi								
1	Pyuthan	25.00	0.00	14.00	39.00	0.00	0.00	39.00
2	Dang	0.00	12.00	24.00	36.00	0.00	0.00	36.00
F014 Total		25.00	12.00	38.00	75.00	0.00	0.00	75.00
Road Reference : F015 : Lamahi - Tulsipur								
1	Dang	46.62	0.00	0.00	46.62	0.00	0.00	46.62
F015 Total		46.62	0.00	0.00	46.62	0.00	0.00	46.62
Road Reference : F016 : Bhuregaun - Gulariya - Murthiawa								
1	Bardiya	9.58	25.73	0.00	35.31	0.00	0.00	35.31
F016 Total		9.58	25.73	0.00	35.31	0.00	0.00	35.31
Road Reference : F017 : Junga - Rajapur - Bhimapur (IB)								
1	Bardiya	0.00	0.00	6.00	6.00	0.00	0.00	6.00
2	Kailali	14.87	13.25	0.00	28.12	0.00	0.00	28.12
F017 Total		14.87	13.25	6.00	34.12	0.00	0.00	34.12

SN	Districts	BT	GR	ER	Sub-Total	UC	PL	Total
Road Reference : F018 : Birgunj - Kalaiya								
1	Bara	8.88	0.00	0.00	8.88	0.00	0.00	8.88
2	Parsa	2.78	0.00	0.00	2.78	0.00	0.00	2.78
F018 Total		11.66	0.00	0.00	11.66	0.00	0.00	11.66
Road Reference : F019 : Bhaise - Bhimphe								
1	Makwanpur	12.00	0.00	0.00	12.00	0.00	0.00	12.00
F019 Total		12.00	0.00	0.00	12.00	0.00	0.00	12.00
Road Reference : F020 : Palung - Kulekhani								
1	Makwanpur	0.00	20.57	0.00	20.57	0.00	0.00	20.57
F020 Total		0.00	20.57	0.00	20.57	0.00	0.00	20.57
Road Reference : F021 : Kathmandu - Trisuli - Dhunche - Rasuwagadhi								
1	Kathmandu	17.05	0.00	0.00	17.05	0.00	0.00	17.05
2	Nuwakot	60.71	0.00	0.00	60.71	0.00	0.00	60.71
3	Rasuwa	40.50	10.00	15.70	66.20	0.00	0.00	66.20
F021 Total		118.26	10.00	15.70	143.96	0.00	0.00	143.96
Road Reference : F022 : Balkhu - Dakchinkali-Kulekhani								
1	Kathmandu	0.00	0.00	0.00	0.00	0.00	0.00	0.00
2	Makwanpur	0.00	0.00	0.00	0.00	0.00	0.00	0.00
F022 Total		0.00	0.00	0.00	0.00	0.00	0.00	0.00
Road Reference : F023 : Satdobato - Tikabhairab								
1	Lalitpur	7.57	4.00	0.00	11.57	0.00	0.00	11.57
F023 Total		7.57	4.00	0.00	11.57	0.00	0.00	11.57
Road Reference : F024 : Satdobato - Phulchoki								
1	Kavrepalanchok	0.00	1.00	0.00	1.00	0.00	0.00	1.00
2	Lalitpur	17.38	4.86	0.00	22.24	0.00	0.00	22.24
F024 Total		17.38	5.86	0.00	23.24	0.00	0.00	23.24
Road Reference : F025 : Lainchaur - Maharajgunj - Budhanilkantha								
1	Kathmandu	9.39	0.00	0.00	9.39	0.00	0.00	9.39
F025 Total		9.39	0.00	0.00	9.39	0.00	0.00	9.39
Road Reference : F026 : Chabahil - Sankhu - Jhule - Chautara								
1	Sindhupalchok	0.00	0.00	34.60	34.60	10.42	0.00	45.02
2	Kathmandu	12.78	3.00	9.65	25.43	0.00	0.00	25.43
F026 Total		12.78	3.00	44.25	60.03	10.42	0.00	70.45
Road Reference : F027 : Jorpati - Sundarjal								
1	Kathmandu	7.13	0.00	0.00	7.13	0.00	0.00	7.13
F027 Total		7.13	0.00	0.00	7.13	0.00	0.00	7.13
Road Reference : F028 : Bhaktapur - Nagarkot								
1	Bhaktapur	23.00	0.00	0.00	23.00	0.00	0.00	23.00
F028 Total		23.00	0.00	0.00	23.00	0.00	0.00	23.00
Road Reference : F029 : Banepa - Khopasi								
1	Kavrepalanchok	8.60	0.94	0.00	9.54	0.00	0.00	9.54
F029 Total		8.60	0.94	0.00	9.54	0.00	0.00	9.54
Road Reference : F030 : Panchkhal - Melamchi - Helambu								
1	Sindhupalchok	11.84	6.00	34.50	52.34	0.00	0.00	52.34
2	Kavrepalanchok	10.66	0.00	0.00	10.66	0.00	0.00	10.66
F030 Total		22.50	6.00	34.50	63.00	0.00	0.00	63.00
Road Reference : F031 : Dolalghat - Chautara								
1	Sindhupalchok	25.11	0.00	0.00	25.11	0.00	0.00	25.11
F031 Total		25.11	0.00	0.00	25.11	0.00	0.00	25.11
Road Reference : F032 : Lamosangu - Ramechhap								
1	Ramechhap	33.00	0.00	0.00	33.00	0.00	0.00	33.00
2	Dolakha	63.65	0.00	0.00	63.65	0.00	0.00	63.65
3	Sindhupalchok	28.27	0.00	0.00	28.27	0.00	0.00	28.27
F032 Total		124.92	0.00	0.00	124.92	0.00	0.00	124.92

SN	Districts	BT	GR	ER	Sub-Total	UC	PL	Total
Road Reference : F033 : Tamkoshi - Jiri								
1	Dolakha	38.03	0.00	0.00	38.03	0.00	0.00	38.03
F033 Total		38.03	0.00	0.00	38.03	0.00	0.00	38.03
Road Reference : F034 : Malekhu - Dhading								
1	Dhading	17.50	0.00	0.00	17.50	0.00	0.00	17.50
F034 Total		17.50	0.00	0.00	17.50	0.00	0.00	17.50
Road Reference : F035 : Anbukhaireni - Gorkha								
1	Gorkha	23.84	0.00	0.00	23.84	0.00	0.00	23.84
2	Tanahu	0.85	0.00	0.00	0.85	0.00	0.00	0.85
F035 Total		24.69	0.00	0.00	24.69	0.00	0.00	24.69
Road Reference : F036 : Dumre - Besisahar - Chame								
1	Lamjung	19.17	0.00	35.00	54.17	0.00	0.00	54.17
2	Tanahu	24.26	0.00	0.00	24.26	0.00	0.00	24.26
3	Manang	0.00	0.00	30.00	30.00	0.00	0.00	30.00
F036 Total		43.43	0.00	65.00	108.43	0.00	0.00	108.43
Road Reference : F037 : Bharatpur Bypass Road								
1	Chitawan	4.49	0.00	0.00	4.49	0.00	0.00	4.49
F037 Total		4.49	0.00	0.00	4.49	0.00	0.00	4.49
Road Reference : F038 : Fikkal - Pasupatinagar								
1	Ilam	10.75	0.00	0.00	10.75	0.00	0.00	10.75
F038 Total		10.75	0.00	0.00	10.75	0.00	0.00	10.75
Road Reference : F039 : Biratnagar - Rangeli								
1	Morang	23.88	0.00	0.00	23.88	0.00	0.00	23.88
F039 Total		23.88	0.00	0.00	23.88	0.00	0.00	23.88
Road Reference : F040 : Hile - Basantapur - Tehrathum								
1	Dhankuta	17.41	0.00	0.00	17.41	0.00	0.00	17.41
2	Terhathum	30.77	0.00	0.00	30.77	0.00	0.00	30.77
F040 Total		48.18	0.00	0.00	48.18	0.00	0.00	48.18
Road Reference : F041 : Pokhara - Sarangkot								
1	Kaski	4.80	0.00	0.00	4.80	0.00	0.00	4.80
F041 Total		4.80	0.00	0.00	4.80	0.00	0.00	4.80
Road Reference : F042 : Pokhara - Baglung - Beni - Jomsom - Ghoktang								
1	Kaski	43.76	0.00	0.00	43.76	0.00	0.00	43.76
2	Mustang	0.00	0.00	181.00	181.00	0.00	0.00	181.00
3	Myagdi	0.00	10.00	21.00	31.00	0.00	0.00	31.00
4	Parbat	24.11	0.00	0.00	24.11	0.00	0.00	24.11
5	Baglung	9.71	2.42	0.00	12.13	0.00	0.00	12.13
F042 Total		77.58	12.42	202.00	292.00	0.00	0.00	292.00
Road Reference : F043 : Bartung - Tamghas - Wamitaksar								
1	Gulmi	44.54	0.00	0.00	44.54	0.00	18.60	63.14
2	Palpa	35.66	0.00	0.00	35.66	0.00	0.00	35.66
F043 Total		80.20	0.00	0.00	80.20	0.00	18.60	98.80
Road Reference : F044 : Bhairahawa - Lumbini - Kakrahawa								
1	Rupandehi	25.78	5.00	0.00	30.78	0.00	0.00	30.78
F044 Total		25.78	5.00	0.00	30.78	0.00	0.00	30.78
Road Reference : F045 : Lumbini - Taulihawa								
1	Rupandehi	5.71	0.00	0.00	5.71	0.00	0.00	5.71
2	Kapilbastu	18.84	0.00	0.00	18.84	0.00	0.00	18.84
F045 Total		24.55	0.00	0.00	24.55	0.00	0.00	24.55
Road Reference : F046 : Nepalgunj - Gulariya								
1	Banke	15.40	0.00	0.00	15.40	0.00	0.00	15.40
2	Bardiya	19.82	0.00	0.00	19.82	0.00	0.00	19.82
F046 Total		35.22	0.00	0.00	35.22	0.00	0.00	35.22

SN	Districts	BT	GR	ER	Sub-Total	UC	PL	Total
Road Reference : F047 : Chhinchu - Jajarkot - Dunai								
1	Salyan	0.00	14.00	0.00	14.00	0.00	0.00	14.00
2	Surkhet	26.00	22.00	8.00	56.00	0.00	0.00	56.00
3	Jajarkot	0.00	0.00	73.00	73.00	61.00	0.00	134.00
4	Dolpa	0.00	0.00	0.00	0.00	56.00	0.00	56.00
F047 Total		26.00	36.00	81.00	143.00	117.00	0.00	260.00
Road Reference : F048 : Birendranagar - Dailekh								
1	Surkhet	22.00	0.00	0.00	22.00	0.00	0.00	22.00
2	Dailekh	38.23	6.78	0.00	45.01	0.00	0.00	45.01
F048 Total		60.23	6.78	0.00	67.01	0.00	0.00	67.01
Road Reference : F049 : Khodpe - Chainpur								
1	Bajhang	30.42	0.30	48.36	79.08	0.00	0.00	79.08
2	Baitadi	28.80	0.80	0.00	29.60	0.00	0.00	29.60
F049 Total		59.22	1.10	48.36	108.68	0.00	0.00	108.68
Road Reference : F050 : Satbanj - Jhulaghat								
1	Baitadi	22.45	0.00	19.60	42.05	0.00	0.00	42.05
F050 Total		22.45	0.00	19.60	42.05	0.00	0.00	42.05
Road Reference : F051 : Silgadhi - Sanfegagar								
1	Achham	26.00	0.00	0.00	26.00	0.00	0.00	26.00
2	Doti	41.00	0.00	0.00	41.00	0.00	0.00	41.00
F051 Total		67.00	0.00	0.00	67.00	0.00	0.00	67.00
Road Reference : F052 : Mirchaiya - Katari - Okhaldhunga - Salleri								
1	Solukhumbu	0.00	0.00	37.20	37.20	0.00	0.00	37.20
2	Okhaldhunga	0.00	0.00	56.70	56.70	0.00	0.00	56.70
3	Udayapur	69.00	0.00	0.00	69.00	0.00	0.00	69.00
4	Siraha	7.00	0.00	0.00	7.00	0.00	0.00	7.00
F052 Total		76.00	0.00	93.90	169.90	0.00	0.00	169.90
Road Reference : F053 : Basantapur - Chainpur - Khandbari - Kimathangka								
1	Terhathum	2.30	0.00	0.00	2.30	0.00	0.00	2.30
2	Sankhuwasabha	47.70	25.00	41.00	113.70	0.00	91.40	205.10
F053 Total		50.00	25.00	41.00	116.00	0.00	91.40	207.40
Road Reference : F054 : Duhabi - Inerwa								
1	Sunsari	14.00	0.00	0.00	14.00	0.00	0.00	14.00
F054 Total		14.00	0.00	0.00	14.00	0.00	0.00	14.00
Road Reference : F055 : Lahan - Bhagwanpur -Thadi								
1	Siraha	18.00	0.00	0.00	18.00	0.00	0.00	18.00
F055 Total		18.00	0.00	0.00	18.00	0.00	0.00	18.00
Road Reference : F056 : Jhumka - Chatara - Barahachhetra								
1	Sunsari	0.00	26.00	0.00	26.00	0.00	0.00	26.00
F056 Total		0.00	26.00	0.00	26.00	0.00	0.00	26.00
Road Reference : F057 : Dharan - Chatara - Gaighat-Katari-Sindhuli-Hetauda								
1	Sunsari	4.00	12.00	0.00	16.00	0.00	0.00	16.00
2	Udayapur	0.00	18.00	86.50	104.50	0.00	0.00	104.50
3	Sindhuli	0.00	27.80	137.00	164.80	0.00	0.00	164.80
4	Makwanpur	0.00	61.20	0.00	61.20	0.00	0.00	61.20
F057 Total		4.00	119.00	223.50	346.50	0.00	0.00	346.50
Road Reference : F058 : Bhedetar - Rajarani - Rabi - Ranke (MERM)								
1	Panchthar	0.00	0.00	58.00	58.00	0.00	0.00	58.00
2	Ilam	0.00	2.00	22.00	24.00	0.00	0.00	24.00
	Dhankuta	5.00	29.00	0.00	34.00	0.00	0.00	34.00
F058 Total		5.00	31.00	80.00	116.00	0.00	0.00	116.00
Road Reference : F059 : Birtamod - Sanischare - Budhabare								
1	Jhapa	12.86	0.00	0.00	12.86	0.00	0.00	12.86
F059 Total		12.86	0.00	0.00	12.86	0.00	0.00	12.86

SN	Districts	BT	GR	ER	Sub-Total	UC	PL	Total
Road Reference : F060 : Bardanga-Urlabari - Madhumalla - Daregaunda								
1	Ilam	0.00	0.00	17.00	17.00	0.00	0.00	17.00
2	Morang	28.00	0.00	11.00	39.00	0.00	0.00	39.00
F060 Total		28.00	0.00	28.00	56.00	0.00	0.00	56.00
Road Reference : F061 : Rangeli - Kanepokhari - Dandagaun - Budhabare								
1	Morang	0.30	22.50	29.20	52.00	0.00	0.00	52.00
2	Dhankuta	0.00	0.00	2.00	2.00	0.00	0.00	2.00
F061 Total		0.30	22.50	31.20	54.00	0.00	0.00	54.00
Road Reference : F062 : Ghinaghat (MRM) - Biratchok								
1	Morang	23.00	0.00	0.00	23.00	0.00	0.00	23.00
F062 Total		23.00	0.00	0.00	23.00	0.00	0.00	23.00
Road Reference : F063 : Inerwa - Kaptanganj								
1	Sunsari	8.00	16.00	0.00	24.00	0.00	0.00	24.00
F063 Total		8.00	16.00	0.00	24.00	0.00	0.00	24.00
Road Reference : F064 : Phattepur - Kanchanpur - Rajbiraj - Gobindapur								
1	Saptari	21.00	17.00	16.00	54.00	0.00	0.00	54.00
F064 Total		21.00	17.00	16.00	54.00	0.00	0.00	54.00
Road Reference : F065 : Kathauna - Pato								
1	Saptari	0.00	16.50	0.00	16.50	0.00	0.00	16.50
F065 Total		0.00	16.50	0.00	16.50	0.00	0.00	16.50
Road Reference : F066 : Kalyanpur - Subharpatti								
1	Saptari	0.00	18.00	0.00	18.00	0.00	0.00	18.00
F066 Total		0.00	18.00	0.00	18.00	0.00	0.00	18.00
Road Reference : F067 : Dhangarhi- Vidyanagar - Bariyarpatti								
1	Siraha	17.00	0.00	0.00	17.00	0.00	0.00	17.00
F067 Total		17.00	0.00	0.00	17.00	0.00	0.00	17.00
Road Reference : F068 : Pokhariya - Jitpur								
1	Parsa	10.20	0.00	0.00	10.20	0.00	0.00	10.20
F068 Total		10.20	0.00	0.00	10.20	0.00	0.00	10.20
Road Reference : F069 : Galchhi - Debighat								
1	Nuwakot	17.00	0.00	0.00	17.00	0.00	0.00	17.00
2	Dhading	3.00	0.00	0.00	3.00	0.00	0.00	3.00
F069 Total		20.00	0.00	0.00	20.00	0.00	0.00	20.00
Road Reference : F070 : Khurkot - Manthali								
1	Ramechhap	11.00	0.00	0.00	11.00	0.00	0.00	11.00
F070 Total		11.00	0.00	0.00	11.00	0.00	0.00	11.00
Road Reference : F071 : Panchkhal - Palanchok Bhagawati								
1	Kavrepalanchok	10.00	1.00	0.00	11.00	0.00	0.00	11.00
F071 Total		10.00	1.00	0.00	11.00	0.00	0.00	11.00
Road Reference : F072 : Gwarko - Panauti - DSRM								
1	Kavrepalanchok	9.10	10.90	0.00	20.00	0.00	0.00	20.00
2	Lalitpur	13.00	8.18	0.00	21.18	0.00	0.00	21.18
F072 Total		22.10	19.08	0.00	41.18	0.00	0.00	41.18
Road Reference : F073 : Bakhundol (ARM) - Bogatigaun (Ktm University Road)								
1	Kavrepalanchok	2.00	0.00	0.00	2.00	0.00	0.00	2.00
F073 Total		2.00	0.00	0.00	2.00	0.00	0.00	2.00
Road Reference : F074 : Nuwakot Darbar Access Road								
1	Nuwakot	6.00	2.00	0.00	8.00	0.00	0.00	8.00
F074 Total		6.00	2.00	0.00	8.00	0.00	0.00	8.00
Road Reference : F075 : Kalimati - Sitapaila - Bhimdhunga - Dharke								
1	Kathmandu	4.10	0.00	0.00	4.10	0.00	6.00	10.10
2	Dhading	0.00	0.00	0.00	0.00	0.00	23.00	23.00
F075 Total		4.10	0.00	0.00	4.10	0.00	29.00	33.10

SN	Districts	BT	GR	ER	Sub-Total	UC	PL	Total
Road Reference : F076 : Ringroad - Tinpipale - Okarpauwa - Kolpu								
1	Kathmandu	0.00	0.00	2.00	2.00	0.00	6.00	8.00
2	Nuwakot	0.00	0.00	0.00	0.00	0.00	27.00	27.00
F076 Total		0.00	0.00	2.00	2.00	0.00	33.00	35.00
Road Reference : F077 : Budhanilkantha - Kakani - Kaulethana (F21)								
1	Kathmandu	4.00	0.00	1.00	5.00	0.00	7.20	12.20
2	Nuwakot	4.00	0.00	0.00	4.00	0.00	2.50	6.50
F077 Total		8.00	0.00	1.00	9.00	0.00	9.70	18.70
Road Reference : F078 : Shobhabhagwati - Nishangaun - Halchok - Narayanthan								
1	Kathmandu	3.50	0.00	0.00	3.50	0.00	2.60	6.10
F078 Total		3.50	0.00	0.00	3.50	0.00	2.60	6.10
Road Reference : F079 : Thulo Bharyang (Ring Road) - Raniban Post								
1	Kathmandu	0.00	0.00	0.00	0.00	0.00	2.40	2.40
F079 Total		0.00	0.00	0.00	0.00	0.00	2.40	2.40
Road Reference : F080 : Balaju - Nepaltar - Sangla Bazar								
1	Kathmandu	1.50	6.00	0.00	7.50	0.00	4.30	11.80
F080 Total		1.50	6.00	0.00	7.50	0.00	4.30	11.80
Road Reference : F081 : Baniyatar - Lainchaur								
	Kathmandu	4.00	0.00	0.00	4.00	0.00	0.00	4.00
F081 Total		4.00	0.00	0.00	4.00	0.00	0.00	4.00
Road Reference : F082 : Samakhosi - Tokhagaun-Dandagaun-Gurje-Tadi-Gangate								
1	Kathmandu	5.00	4.50	7.50	17.00	0.00	0.00	17.00
2	Nuwakot	12.80	4.00	12.00	28.80	2.00	7.00	37.80
F082 Total		17.80	8.50	19.50	45.80	2.00	7.00	54.80
Road Reference : F083 : Kapan - Mandikatar - Hadigaun (Bulbule)								
1	Kathmandu	0.00	0.00	0.00	0.00	0.00	4.50	4.50
F083 Total		0.00	0.00	0.00	0.00	0.00	4.50	4.50
Road Reference : F084 : Chuchchepati - Kapan - Gamcha								
1	Kathmandu	5.00	0.00	0.00	5.00	0.00	2.80	7.80
F084 Total		5.00	0.00	0.00	5.00	0.00	2.80	7.80
Road Reference : F085 : Mahankal - Atterkhel								
1	Kathmandu	0.00	0.00	1.70	1.70	0.00	0.80	2.50
F085 Total		0.00	0.00	1.70	1.70	0.00	0.80	2.50
Road Reference : F086 : Jadibuti (ARM) - Thimi - Sallaghari								
1	Bhaktapur	5.00	0.00	0.00	5.00	0.00	0.00	5.00
2	Kathmandu	2.30	0.00	0.00	2.30	0.00	0.00	2.30
F086 Total		7.30	0.00	0.00	7.30	0.00	0.00	7.30
Road Reference : F087 : Pepsikola - Gothatar								
1	Kathmandu	3.00	0.50	0.00	3.50	0.00	0.00	3.50
F087 Total		3.00	0.50	0.00	3.50	0.00	0.00	3.50
Road Reference : F088 : Gokarna - Jorpat i- Gothatar								
1	Kathmandu	3.60	0.00	0.00	3.60	0.00	0.00	3.60
F088 Total		3.60	0.00	0.00	3.60	0.00	0.00	3.60
Road Reference : F089 : Pepsikola - Karkigaun								
1	Kathmandu	0.00	6.40	0.00	6.40	0.00	0.00	6.40
F089 Total		0.00	6.40	0.00	6.40	0.00	0.00	6.40
Road Reference : F090 : Thimi (SOS) - Lokanthali - Tikathali - Manohara								
1	Bhaktapur	5.00	0.00	0.00	5.00	0.00	0.00	5.00
2	Lalitpur	0.30	0.00	0.00	0.30	0.00	0.00	0.30
F090 Total		5.30	0.00	0.00	5.30	0.00	0.00	5.30
Road Reference : F091 : Kasaultar - Balkot - Sirutar - Biruwa								
1	Bhaktapur	4.00	2.00	0.00	6.00	0.00	0.00	6.00
F091 Total		4.00	2.00	0.00	6.00	0.00	0.00	6.00

SN	Districts	BT	GR	ER	Sub-Total	UC	PL	Total
Road Reference : F092 : Thimi - Mulpani - Gokarna								
1	Bhaktapur	4.20	0.00	0.00	4.20	0.00	0.00	4.20
2	Kathmandu	4.10	0.00	0.00	4.10	0.00	0.00	4.10
F092 Total		8.30	0.00	0.00	8.30	0.00	0.00	8.30
Road Reference : F093 : Sallaghari - Duwakot								
1	Bhaktapur	5.50	0.00	0.00	5.50	0.00	0.00	5.50
F093 Total		5.50	0.00	0.00	5.50	0.00	0.00	5.50
Road Reference : F094 : Byasi (Bhaktapur) - Changunarayan								
1	Bhaktapur	5.80	0.00	0.00	5.80	0.00	0.00	5.80
F094 Total		5.80	0.00	0.00	5.80	0.00	0.00	5.80
Road Reference : F095 : Mulpani - Changunarayan - Phedigaun								
1	Bhaktapur	4.00	8.50	0.00	12.50	0.00	0.00	12.50
2	Kathmandu	0.00	0.00	0.00	0.00	0.00	1.50	1.50
F095 Total		4.00	8.50	0.00	12.50	0.00	1.50	14.00
Road Reference : F096 : Nagarkot - Sankhu								
1	Kavrepalanchok	0.00	0.50	1.30	1.80	0.00	0.00	1.80
2	Kathmandu	0.00	1.00	2.85	3.85	0.00	0.00	3.85
F096 Total		0.00	1.50	4.15	5.65	0.00	0.00	5.65
Road Reference : F097 : Chyamasingsh - Nala - Banepa								
1	Kavrepalanchok	3.00	1.73	0.00	4.73	0.00	0.00	4.73
2	Bhaktapur	3.72	3.25	0.00	6.97	0.00	0.00	6.97
F097 Total		6.72	4.98	0.00	11.70	0.00	0.00	11.70
Road Reference : F098 : Kamalbinayak - Sudal - Nagarkot								
1	Kavrepalanchok	0.00	0.00	3.00	3.00	0.00	0.00	3.00
2	Bhaktapur	0.00	2.00	7.00	9.00	0.00	0.00	9.00
F098 Total		0.00	2.00	10.00	12.00	0.00	0.00	12.00
Road Reference : F099 : Trolley Bus (ARM) - Suryabinayak - Bhujunge								
1	Lalitpur	0.00	0.00	0.00	0.00	0.00	1.00	1.00
2	Bhaktapur	4.50	6.00	0.00	10.50	0.00	0.00	10.50
F099 Total		4.50	6.00	0.00	10.50	0.00	1.00	11.50
Road Reference : F100 : Sallaghari - Katunje - Lubhu								
1	Lalitpur	0.00	0.00	1.00	1.00	0.00	0.00	1.00
2	Bhaktapur	2.66	1.34	0.00	4.00	0.00	0.00	4.00
F100 Total		2.66	1.34	1.00	5.00	0.00	0.00	5.00
Road Reference : F101 : Manohara Bridge (RR) - Sankhamu-Teku-Balkhu (RR)								
1	Lalitpur	4.10	0.00	0.00	4.10	0.00	0.00	4.10
2	Kathmandu	1.50	0.00	0.00	1.50	0.00	0.00	1.50
F101 Total		5.60	0.00	0.00	5.60	0.00	0.00	5.60
Road Reference : F102 : Satdobato - Dhapakhel - Thecho								
1	Lalitpur	5.00	0.00	0.00	5.00	0.00	0.00	5.00
F102 Total		5.00	0.00	0.00	5.00	0.00	0.00	5.00
Road Reference : F103 : Jayanepal - Bhaisepati - Tikabhairab								
1	Lalitpur	7.80	8.00	0.00	15.80	0.00	0.00	15.80
2	Kathmandu	3.00	0.00	0.00	3.00	0.00	0.00	3.00
F103 Total		10.80	8.00	0.00	18.80	0.00	0.00	18.80
Road Reference : F104 : Khasibajar - Kirtipur - Tinthana								
1	Kathmandu	10.20	0.00	0.50	10.70	0.00	0.00	10.70
F104 Total		10.20	0.00	0.50	10.70	0.00	0.00	10.70
Road Reference : F105 : Nagdhunga - Tankeswor								
1	Kathmandu	3.00	2.00	6.00	11.00	0.00	0.00	11.00
F105 Total		3.00	2.00	6.00	11.00	0.00	0.00	11.00
Road Reference : F106 : Charikot - Dolakha - Lamabagar - LapcheGaun								
1	Dolakha	5.00	10.00	20.00	35.00	0.00	55.00	90.00
F106 Total		5.00	10.00	20.00	35.00	0.00	55.00	90.00

SN	Districts	BT	GR	ER	Sub-Total	UC	PL	Total
Road Reference : F107 : Birendrabazar -Yadukuha - Mahinathur								
1	Dhanusa	0.00	25.00	17.00	42.00	0.00	0.00	42.00
F107 Total		0.00	25.00	17.00	42.00	0.00	0.00	42.00
Road Reference : F108 : Janakpur - Yadukaha								
1	Dhanusa	0.00	2.50	15.50	18.00	0.00	0.00	18.00
F108 Total		0.00	2.50	15.50	18.00	0.00	0.00	18.00
Road Reference : F109 : Dharapani (MRM) - Dhanusadham - Janakpur								
1	Dhanusa	25.00	1.00	0.00	26.00	0.00	0.00	26.00
F109 Total		25.00	1.00	0.00	26.00	0.00	0.00	26.00
Road Reference : F110 : Janakpur (H06) - Jatahi								
1	Dhanusa	11.00	3.00	0.00	14.00	0.00	0.00	14.00
F110 Total		11.00	3.00	0.00	14.00	0.00	0.00	14.00
Road Reference : F111 : Jaleswor - Matihani								
1	Mahottari	6.00	1.00	0.00	7.00	0.00	0.00	7.00
F111 Total		6.00	1.00	0.00	7.00	0.00	0.00	7.00
Road Reference : F112 : Janakpur(H06) - Manara - Bathanaha								
1	Dhanusa	0.00	3.00	0.00	3.00	0.00	0.00	3.00
2	Mahottari	0.00	3.00	11.00	14.00	0.00	3.00	17.00
F112 Total		0.00	6.00	11.00	17.00	0.00	3.00	20.00
Road Reference : F113 : Janakpur - Kurtha - Samsi								
1	Dhanusa	0.00	4.00	0.00	4.00	0.00	0.00	4.00
2	Mahottari	0.00	9.00	12.00	21.00	0.00	0.00	21.00
F113 Total		0.00	13.00	12.00	25.00	0.00	0.00	25.00
Road Reference : F114 : Bardibas - Jaleswor								
1	Mahottari	42.00	0.00	0.00	42.00	0.00	0.00	42.00
F114 Total		42.00	0.00	0.00	42.00	0.00	0.00	42.00
Road Reference : F115 : Maithan (MRM) - Gashala - Samsi								
1	Mahottari	0.00	26.00	0.00	26.00	0.00	0.00	26.00
F115 Total		0.00	26.00	0.00	26.00	0.00	0.00	26.00
Road Reference : F116 : Phuljor (MRM) -Bayalbas - Tribhuwannagar								
1	Sarlahi	0.00	17.00	5.00	22.00	0.00	2.00	24.00
F116 Total		0.00	17.00	5.00	22.00	0.00	2.00	24.00
Road Reference : F117 : Nayaroad (MRM) - Barhathwa - Madhubani								
1	Sarlahi	0.00	37.00	5.00	42.00	0.00	0.00	42.00
F117 Total		0.00	37.00	5.00	42.00	0.00	0.00	42.00
Road Reference : F118 : Tamagadhi (MRM) - Simraungadh(IB)								
1	Bara	0.00	31.00	1.00	32.00	8.00	0.00	40.00
F118 Total		0.00	31.00	1.00	32.00	8.00	0.00	40.00
Road Reference : F119 : Manmat (MRM) - Kalaiya - Matiarwa (IB)								
1	Bara	5.00	23.00	0.00	28.00	0.00	0.00	28.00
F119 Total		5.00	23.00	0.00	28.00	0.00	0.00	28.00
Road Reference : F120 : Hetauda - Tikabhairab (Kanti Rajpath)								
1	Lalitpur	0.00	0.00	32.20	32.20	0.00	0.00	32.20
2	Makwanpur	13.50	19.00	17.70	50.20	0.00	0.00	50.20
F120 Total		13.50	19.00	49.90	82.40	0.00	0.00	82.40
Road Reference : F121 : Pharping - Kulekhani								
1	Kathmandu	0.00	0.00	3.00	3.00	0.00	0.00	3.00
2	Makwanpur	0.00	0.00	9.00	9.00	0.00	0.00	9.00
F121 Total		0.00	0.00	12.00	12.00	0.00	0.00	12.00
Road Reference : F122 : Bhimpheedi - Kulekhani								
1	Makwanpur	15.00	0.00	0.00	15.00	0.00	0.00	15.00
F122 Total		15.00	0.00	0.00	15.00	0.00	0.00	15.00

SN	Districts	BT	GR	ER	Sub-Total	UC	PL	Total
Road Reference : F123 : Dhadingbesi - Arughat - Gorkha								
1	Dhading	0.00	20.00	11.00	31.00	0.00	0.00	31.00
2	Gorkha	0.00	8.00	32.00	40.00	0.00	0.00	40.00
F123 Total		0.00	28.00	43.00	71.00	0.00	0.00	71.00
Road Reference : F124 : Tandri (MRM) - Sauraha								
1	Chitawan	7.00	0.00	0.00	7.00	0.00	0.00	7.00
F124 Total		7.00	0.00	0.00	7.00	0.00	0.00	7.00
Road Reference : F125 : Bharatpur - Meghauri Airport - Dhruwa								
1	Chitawan	16.00	9.00	8.00	33.00	0.00	0.00	33.00
F125 Total		16.00	9.00	8.00	33.00	0.00	0.00	33.00
Road Reference : F126 : Anptari (H05) - Devghat								
1	Chitawan	4.00	0.00	0.00	4.00	0.00	0.00	4.00
F126 Total		4.00	0.00	0.00	4.00	0.00	0.00	4.00
Road Reference : F127 : Dumre (PRM) - Bandipur								
1	Tanahu	8.00	0.00	0.00	8.00	0.00	0.00	8.00
F127 Total		8.00	0.00	0.00	8.00	0.00	0.00	8.00
Road Reference : F128 : Damauli (PRM) - Neupanebesi - Bhorletar								
1	Lamjung	0.00	0.00	15.87	15.87	0.00	0.00	15.87
2	Tanahu	8.73	6.32	1.08	16.13	0.00	0.00	16.13
F128 Total		8.73	6.32	16.95	32.00	0.00	0.00	32.00
Road Reference : F129 : Talchok (PRM) - Khudimuhan (Beganas Lake)								
1	Kaski	3.50	0.00	0.00	3.50	0.00	0.00	3.50
F129 Total		3.50	0.00	0.00	3.50	0.00	0.00	3.50
Road Reference : F130 : Bhumahi - Parasi - Bhairahawa								
1	Nawalparasi	14.40	0.00	0.00	14.40	0.00	0.00	14.40
2	Rupandehi	14.75	0.00	0.00	14.75	0.00	0.00	14.75
F130 Total		29.15	0.00	0.00	29.15	0.00	0.00	29.15
Road Reference : F131 : Malunga (SRM) - Mirmi - Gupteswor(Kaligandaki-Kushma)								
1	Syangja	19.00	0.00	0.00	19.00	8.00	6.00	33.00
2	Parbat	0.00	0.00	48.50	48.50	0.00	3.50	52.00
F131 Total		19.00	0.00	48.50	67.50	8.00	9.50	85.00
Road Reference : F132 : Ridi - Rudrabeni - Wami Taksar								
1	Gulmi	0.00	0.00	57.00	57.00	0.00	0.00	57.00
F132 Total		0.00	0.00	57.00	57.00	0.00	0.00	57.00
Road Reference : F133 : Maldhunga - Beni								
1	Parbat	13.00	0.00	0.00	13.00	0.00	0.00	13.00
F133 Total		13.00	0.00	0.00	13.00	0.00	0.00	13.00
Road Reference : F134 : Tamghas - Sandhikharka - Pyuthan								
1	Gulmi	0.00	0.00	9.00	9.00	0.00	0.00	9.00
2	Arghakhanchi	0.00	0.00	42.00	42.00	0.00	33.00	75.00
3	Pyuthan	0.00	0.00	48.00	48.00	0.00	0.00	48.00
F134 Total		0.00	0.00	99.00	99.00	0.00	33.00	132.00
Road Reference : F135 : Ramapur (MRM) - Lumbini								
1	Rupandehi	8.00	3.50	6.50	18.00	0.00	0.00	18.00
F135 Total		8.00	3.50	6.50	18.00	0.00	0.00	18.00
Road Reference : F136 : Shivgadhiya - Padariya (Lumbini-Circumambulatory)								
1	Rupandehi	4.60	8.00	0.00	12.60	0.00	0.00	12.60
F136 Total		4.60	8.00	0.00	12.60	0.00	0.00	12.60
Road Reference : F137 : Pipara (MRM) - Chakar Chauda (IB)								
1	Kapilbastu	0.00	8.00	19.00	27.00	0.00	0.00	27.00
F137 Total		0.00	8.00	19.00	27.00	0.00	0.00	27.00
Road Reference : F138 : Lamahi (MRM) - Koilabas (IB)								
1	Dang	1.00	18.00	15.00	34.00	0.00	0.00	34.00
F138 Total		1.00	18.00	15.00	34.00	0.00	0.00	34.00

SN	Districts	BT	GR	ER	Sub-Total	UC	PL	Total
Road Reference : F139 : Holeri- Sworgadwar - Jaluki (Bhingri)								
1	Pyuthan	0.00	0.00	13.00	13.00	9.00	0.00	22.00
2	Rolpa	0.00	15.00	7.00	22.00	0.00	0.00	22.00
F139 Total		0.00	15.00	20.00	35.00	9.00	0.00	44.00
Road Reference : F140 : Sitalpati (H11) - Salyan								
1	Salyan	9.00	0.00	0.00	9.00	0.00	0.00	9.00
F140 Total		9.00	0.00	0.00	9.00	0.00	0.00	9.00
Road Reference : F141 : Tulasipur - Purandhara - Botechaur								
1	Salyan	0.00	0.00	21.00	21.00	0.00	0.00	21.00
2	Dang	0.00	44.00	0.00	44.00	0.00	0.00	44.00
	Surkhet	0.00	17.70	3.30	21.00	0.00	0.00	21.00
F141 Total		0.00	61.70	24.30	86.00	0.00	0.00	86.00
Road Reference : F142 : Nepalganj - Baghauda								
1	Banke	4.00	32.50	11.10	47.60	2.40	0.00	50.00
F142 Total		4.00	32.50	11.10	47.60	2.40	0.00	50.00
Road Reference : F143 : Ranjha (H12) - Nepalganj Airport								
1	Banke	2.00	0.00	0.00	2.00	0.00	0.00	2.00
F143 Total		2.00	0.00	0.00	2.00	0.00	0.00	2.00
Road Reference : F144 : Tallo Dungeswor - Mathillo Dungeswor								
1	Dailekh	0.00	8.22	0.00	8.22	0.00	0.00	8.22
F144 Total		0.00	8.22	0.00	8.22	0.00	0.00	8.22
Road Reference : F145 : Hilsa (IB) - Simikot								
1	Humla	0.00	0.00	40.00	40.00	0.00	48.00	88.00
F145 Total		0.00	0.00	40.00	40.00	0.00	48.00	88.00
Road Reference : F146 : Sanphebagar- Martadi - Kolti - Sukhadhik								
1	Bajura	13.00	0.00	30.00	43.00	0.00	54.00	97.00
2	Achham	14.00	0.00	0.00	14.00	0.00	0.00	14.00
F146 Total		27.00	0.00	30.00	57.00	0.00	54.00	111.00
Road Reference : F147 : Sati (Khairipur) - Khakraula								
1	Kailali	0.00	5.00	0.00	5.00	0.00	0.00	5.00
F147 Total		0.00	5.00	0.00	5.00	0.00	0.00	5.00
Road Reference : F148 : Muda (MRM) - Bhajani - Lalbojhi (IB)								
1	Kailali	0.00	21.00	0.00	21.00	0.00	0.00	21.00
F148 Total		0.00	21.00	0.00	21.00	0.00	0.00	21.00
Road Reference : F149 : Sahajpur - B.P. Nagar - Silgadhi (Dipayal)								
1	Doti	0.00	0.00	45.00	45.00	5.00	30.00	80.00
2	Kailali	0.00	0.00	28.00	28.00	0.00	0.00	28.00
F149 Total		0.00	0.00	73.00	73.00	5.00	30.00	108.00
Road Reference : F150 : Kaluwapur (MRM) -Shreepur - Belauri (IB)								
1	Kanchanpur	0.00	27.00	3.00	30.00	0.00	0.00	30.00
F150 Total		0.00	27.00	3.00	30.00	0.00	0.00	30.00
Road Reference : F151 : Daiji (MRM) - Jogbudha - Budar (MKRM)								
1	Doti	0.00	6.00	0.00	6.00	0.00	0.00	6.00
2	Kanchanpur	0.00	10.00	12.60	22.60	0.00	0.00	22.60
3	Dadeldhura	0.00	0.00	40.00	40.00	0.00	0.00	40.00
F151 Total		0.00	16.00	52.60	68.60	0.00	0.00	68.60
Road Reference : F152 : Leguwaghat - Sabha Khola (Boharatar)								
1	Dhankuta	0.00	0.00	7.00	7.00	0.00	0.00	7.00
2	Sankhuwasabha	0.00	0.00	21.00	21.00	0.00	0.00	21.00
F152 Total		0.00	0.00	28.00	28.00	0.00	0.00	28.00
Road Reference : F153 : Bastipur - Makri- Pashupatinagar (Hetauda Bypass)								
1	Makwanpur	0.00	0.00	0.00	0.00	0.00	15.00	15.00
F153 Total		0.00	0.00	0.00	0.00	0.00	15.00	15.00

SN	Districts	BT	GR	ER	Sub-Total	UC	PL	Total
Road Reference : F154 : Nagma-Gamgadhi								
1	Jumla	0.00	0.00	54.00	54.00	11.00	0.00	65.00
2	Mugu	0.00	0.00	0.00	0.00	24.00	0.00	24.00
F154 Total		0.00	0.00	54.00	54.00	35.00	0.00	89.00
Road Reference : F155 : Bramhadev- Jogbuda								
1	Kanchanpur	0.00	0.00	0.00	0.00	0.00	8.00	8.00
2	Dadeldhura	0.00	0.00	0.00	0.00	0.00	22.00	22.00
F155 Total		0.00	0.00	0.00	0.00	0.00	30.00	30.00
Road Reference : F156 : Phikkal (MERM) - Sriantu - Baudhadham								
1	Ilam	2.50	2.90	24.60	30.00	0.00	3.00	33.00
F156 Total		2.50	2.90	24.60	30.00	0.00	3.00	33.00
Road Reference : F157 : Ilam (MERM) - Maipokhari - Sandakpur								
	Ilam	0.80	7.20	27.00	35.00	0.00	0.00	35.00
F157 Total		0.80	7.20	27.00	35.00	0.00	0.00	35.00
Road Reference : F158 : Damak (MRM) - Chisapani								
1	Ilam	0.00	0.00	36.50	36.50	0.00	1.00	37.50
2	Jhapa	6.50	0.00	0.00	6.50	0.00	0.00	6.50
F158 Total		6.50	0.00	36.50	43.00	0.00	1.00	44.00
Road Reference : F159 : Khurkot - Ramechhap - Sanghutar - Okhaldhunga								
1	Okhaldhunga	0.00	0.00	0.00	0.00	9.00	56.00	65.00
2	Ramechhap	0.00	0.00	33.00	33.00	0.00	0.00	33.00
F159 Total		0.00	0.00	33.00	33.00	9.00	56.00	98.00
Road Reference : F160 : Janakpur Circumambulatory								
1	Dhanusa	0.00	0.00	0.00	0.00	0.00	70.00	70.00
2	Mahottari	0.00	0.00	0.00	0.00	0.00	10.00	10.00
F160 Total		0.00	0.00	0.00	0.00	0.00	80.00	80.00
Road Reference : F161 : Lothar (MRM) - Chuniyadhara - Malekhu								
1	Dhading	0.00	0.00	27.00	27.00	0.00	0.00	27.00
2	Chitawan	1.50	4.50	29.00	35.00	0.00	0.00	35.00
F161 Total		1.50	4.50	56.00	62.00	0.00	0.00	62.00
Road Reference : F162 : Beganstal - Borletar								
1	Lamjung	0.00	1.00	1.00	2.00	0.00	0.00	2.00
2	Kaski	0.00	4.00	19.50	23.50	0.00	0.00	23.50
F162 Total		0.00	5.00	20.50	25.50	0.00	0.00	25.50
Road Reference : F163 : Khairenitar (PRM) - Bhimad - Kawaswoti (MRM)								
1	Tanahu	5.00	3.00	33.00	41.00	0.00	8.00	49.00
2	Nawalparasi	0.00	0.00	0.00	0.00	0.00	57.00	57.00
F163 Total		5.00	3.00	33.00	41.00	0.00	65.00	106.00
Road Reference : F164 : Gagangaunda (PRM)-Begnastal								
1	Kaski	0.00	1.00	1.00	2.00	0.00	0.00	2.00
F164 Total		0.00	1.00	1.00	2.00	0.00	0.00	2.00
Road Reference : F165 : Pratapur-Raninagar-Triveni								
1	Nawalparasi	0.00	6.00	5.00	11.00	8.00	0.00	19.00
F165 Total		0.00	6.00	5.00	11.00	8.00	0.00	19.00
Road Reference : F166 : Kagbeni-Muktinath								
1	Nawalparasi	0.00	0.00	0.00	0.00	0.00	26.00	26.00
F166 Total		0.00	0.00	0.00	0.00	0.00	26.00	26.00
Road Reference : F167 : Gaidakot - Rampur - Pipaldanda								
1	Palpa	0.00	0.00	52.00	52.00	0.00	0.00	52.00
2	Nawalparasi	0.00	0.00	0.00	0.00	0.00	56.00	56.00
F167 Total		0.00	0.00	52.00	52.00	0.00	56.00	108.00
Road Reference : F168 : Bansgadhi (MRM) - Mainapokhar								
1	Bardiya	0.74	7.66	0.00	8.40	0.00	0.00	8.40
F168 Total		0.74	7.66	0.00	8.40	0.00	0.00	8.40

SN	Districts	BT	GR	ER	Sub-Total	UC	PL	Total
Road Reference : F169 : Kothiya -Thakurdwara - Amreni (MRM)								
1	Bardiya	2.40	12.60	6.00	21.00	0.00	0.00	21.00
F169 Total		2.40	12.60	6.00	21.00	0.00	0.00	21.00
Road Reference : F170 : Baddichour - Gutu								
1	Surkhet	0.00	14.00	16.00	30.00	0.00	0.00	30.00
F170 Total		0.00	14.00	16.00	30.00	0.00	0.00	30.00
Road Reference : F171 : Bhuregaun (MRM) - Bangesimal (Surkhet)								
1	Bardiya	1.00	4.00	16.00	21.00	0.00	16.00	37.00
2	Surkhet	0.00	0.00	0.00	0.00	0.00	31.00	31.00
F171 Total		1.00	4.00	16.00	21.00	0.00	47.00	68.00
Road Reference : F172 : Karnali Corridor (Manma - Kolti)								
1	Kalikot	0.00	0.00	7.00	7.00	29.00	0.00	36.00
2	Mugu	0.00	0.00	0.00	0.00	0.00	20.00	20.00
3	Bajura	0.00	0.00	0.00	0.00	0.00	55.00	55.00
4	Humla	0.00	0.00	0.00	0.00	0.00	85.00	85.00
F172 Total		0.00	0.00	7.00	7.00	29.00	160.00	196.00
Road Reference : F173 : Gamgadhi - Sukadik								
1	Mugu	0.00	0.00	0.00	0.00	0.00	65.00	65.00
F173 Total		0.00	0.00	0.00	0.00	0.00	65.00	65.00
Road Reference : F174 : Silgadhi - Khaptad								
1	Doti	0.00	0.00	8.00	8.00	0.00	22.00	30.00
F174 Total		0.00	0.00	8.00	8.00	0.00	22.00	30.00
Road Reference : F175 : Patan - Pancheswor								
1	Baitadi	0.00	0.00	32.00	32.00	0.00	30.00	62.00
F175 Total		0.00	0.00	32.00	32.00	0.00	30.00	62.00
Road Reference : F176 : Ugratara - Melauli								
1	Dadeldhura	0.00	0.00	24.00	24.00	5.00	14.00	43.00
2	Baitadi	0.00	0.00	0.00	0.00	0.00	22.00	22.00
F176 Total		0.00	0.00	24.00	24.00	5.00	36.00	65.00
Road Reference : F177 : Jumla Khalanga - Gamgadhi								
1	Jumla	0.00	0.00	0.00	0.00	0.00	55.00	55.00
F177 Total		0.00	0.00	0.00	0.00	0.00	55.00	55.00
Road Reference : F178 : Bijulebhanjyang - Lamidanda								
1	Khotang	0.00	0.00	10.46	10.46	0.00	0.00	10.46
F178 Total		0.00	0.00	10.46	10.46	0.00	0.00	10.46
Road Reference : F179 : Shahid Road								
1	Rolpa	0.00	69.00	3.00	72.00	22.00	29.00	123.00
2	Rukum	0.00	0.00	2.00	2.00	0.00	28.00	30.00
3	Dang	0.00	24.00	0.00	24.00	0.00	0.00	24.00
F179 Total		0.00	93.00	5.00	98.00	22.00	57.00	177.00
Road Reference : F180 : Ganeshman Marg (Thankot-Markhu)								
1	Kathmandu	2.00	2.00	2.00	6.00	0.00	0.00	6.00
2	Makwanpur	0.00	0.00	14.00	14.00	0.00	0.00	14.00
F180 Total		2.00	2.00	16.00	20.00	0.00	0.00	20.00
Road Reference : F181 : Tadi (Gangate) -Labdhu-Samundrarat-Golphubhanjyang								
	Nuwakot	4.20	5.00	13.00	22.20	0.00	10.00	32.20
F181 Total		4.20	5.00	13.00	22.20	0.00	10.00	32.20
Road Reference : F182 : Tallo Dungeshwor - Dullu								
1	Dailekh	16.00	0.00	2.00	18.00	0.00	0.00	18.00
F182 Total		16.00	0.00	2.00	18.00	0.00	0.00	18.00
Road Reference : F183 : Shivanagar - Gumi - Patihalnachaur								
1	Surkhet	0.00	0.00	16.00	16.00	0.00	29.00	45.00
F183 Total		0.00	0.00	16.00	16.00	0.00	29.00	45.00

SN	Districts	BT	GR	ER	Sub-Total	UC	PL	Total
Road Reference : F184 : 11 Kilo (F035) - Chhepetar - Bhaluswara - Barpak								
1	Gorkha	3.00	32.50	13.10	48.60	0.00	0.00	48.60
F184 Total		3.00	32.50	13.10	48.60	0.00	0.00	48.60
Road Reference : F185 : Putalikhet - Karkineta - Majhbeni(Kusma)								
1	Syangja	0.00	0.00	23.00	23.00	3.00	0.00	26.00
2	Parbat	0.00	0.00	0.00	0.00	5.00	16.00	21.00
F185 Total		0.00	0.00	23.00	23.00	8.00	16.00	47.00
Road Reference : F186 : Mirdi - Chitre - Bhimad								
1	Tanahu	0.00	0.00	0.00	0.00	0.00	18.00	18.00
2	Syangja	0.00	2.00	34.00	36.00	0.00	5.00	41.00
F186 Total		0.00	2.00	34.00	36.00	0.00	23.00	59.00
Road Reference : F187 : Trafficchok(MRM)-Baniniya (IB)								
1	Saptari	0.00	0.00	21.00	21.00	0.00	0.00	21.00
F187 Total		0.00	0.00	21.00	21.00	0.00	0.00	21.00
Road Reference : F188 : Banke (MRM) - Sangrampur (IB)								
1	Sarlahi	0.00	0.00	22.00	22.00	0.00	0.00	22.00
F188 Total		0.00	0.00	22.00	22.00	0.00	0.00	22.00
Road Reference : F189 : Gadhimai - Kawahigoth (IB)								
1	Bara	0.00	0.00	10.00	10.00	0.00	0.00	10.00
F189 Total		0.00	0.00	10.00	10.00	0.00	0.00	10.00
Road Reference : F190 : Dumkibas (MRM) - Tribeni								
1	Nawalparasi	0.00	0.00	22.00	22.00	0.00	0.00	22.00
F190 Total		0.00	0.00	22.00	22.00	0.00	0.00	22.00
Road Reference : F191 : Kathawa (IB) -Tribeni								
1	Nawalparasi	0.00	0.00	0.00	0.00	0.00	19.00	19.00
F191 Total		0.00	0.00	0.00	0.00	0.00	19.00	19.00
Road Reference : F192 : Rajapur-Daulatpur-Sati								
1	Bardiya	0.00	0.00	0.00	0.00	0.00	7.00	7.00
2	Kailali	0.00	6.00	0.00	6.00	0.00	0.00	6.00
F192 Total		0.00	6.00	0.00	6.00	0.00	7.00	13.00
Road Reference : F193 : Chaurjahari - Bas khola - Devisthal								
1	Rukum	0.00	0.00	2.00	2.00	0.00	0.00	2.00
2	Salyan	0.00	0.00	40.00	40.00	0.00	0.00	40.00
F193 Total		0.00	0.00	42.00	42.00	0.00	0.00	42.00
Road Reference : F194 : Saljhandi - Satyawati - Badahare River								
1	Baglung	0.00	0.00	0.00	0.00	0.00	52.00	52.00
2	Gulmi	0.00	0.00	16.50	16.50	0.00	18.50	35.00
3	Palpa	0.00	0.00	12.00	12.00	0.00	0.00	12.00
4	Rupandehi	3.50	1.00	7.00	11.50	0.00	0.00	11.50
5	Arghakhanchi	0.00	1.00	67.00	68.00	0.00	0.00	68.00
F194 Total		3.50	2.00	102.50	108.00	0.00	70.50	178.50
Road Reference : F195 : Tikapur-Muda-Saphe Bagar-Dadakot-Gothalakhhet-Chainpur-Saipal-Urai Bhanjyang								
1	Bajura	0.00	0.00	0.00	0.00	0.00	22.00	22.00
2	Bajhang	0.00	0.00	0.00	0.00	0.00	119.00	119.00
3	Achham	0.00	0.00	15.00	15.00	0.00	8.00	23.00
4	Doti	0.00	0.00	0.00	0.00	0.00	35.00	35.00
5	Kailali	0.00	13.00	18.00	31.00	0.00	34.00	65.00
F195 Total		0.00	13.00	33.00	46.00	0.00	218.00	264.00
Road Reference : F196 : Benighat-Arughat-Larke Bhanjyang								
1	Dhading	0.00	0.00	0.20	0.20	0.00	0.00	0.20
2	Gorkha	0.00	0.00	64.80	64.80	0.00	100.00	164.80
F196 Total		0.00	0.00	65.00	65.00	0.00	100.00	165.00

SN	Districts	BT	GR	ER	Sub-Total	UC	PL	Total
Road Reference : F197 : Aryabhanjyang (SRM)-Rampur								
1	Palpa	14.00	0.00	27.00	41.00	0.00	0.00	41.00
F197 Total		14.00	0.00	27.00	41.00	0.00	0.00	41.00
Road Reference : F198 : Birgunj Bypass								
1	Parsa	7.21	0.00	0.00	7.21	0.00	0.00	7.21
F198 Total		7.21	0.00	0.00	7.21	0.00	0.00	7.21
Road Reference : F199 : Gandhi Manamohan Marga								
1	Morang	0.00	0.00	0.00	0.00	0.00	25.00	25.00
F199 Total		0.00	0.00	0.00	0.00	0.00	25.00	25.00
Road Reference : F200 : Kharindrapur(MRM)-Shitalpur-Bilmi								
1	Kapilbastu	0.00	0.00	0.00	0.00	0.00	18.00	18.00
F200 Total		0.00	0.00	0.00	0.00	0.00	18.00	18.00
Road Reference : F201 : Jiri-Salleri Road								
1	Solukhumbu	0.00	0.00	0.00	0.00	0.00	69.50	69.50
2	Ramechhap	0.00	0.00	0.00	0.00	0.00	36.50	36.50
3	Dolakha	0.00	0.00	0.00	0.00	0.00	54.00	54.00
F201 Total		0.00	0.00	0.00	0.00	0.00	160.00	160.00
Road Reference : F202 : Jiri-Those-Bamti Road								
1	Ramechhap	0.00	0.00	0.00	0.00	0.00	33.00	33.00
2	Dolakha	0.00	0.00	0.00	0.00	0.00	11.00	11.00
F202 Total		0.00	0.00	0.00	0.00	0.00	44.00	44.00
Road Reference : F203 : Gulariya-Bagahighat-Rammapur								
1	Bardiya	0.00	0.00	0.00	0.00	0.00	22.00	22.00
F203 Total		0.00	0.00	0.00	0.00	0.00	22.00	22.00
Road Reference : F204 : Khutiya-B.P.Nagar-Gadhasera--Dipayal								
1	Doti	0.00	0.00	7.00	7.00	0.00	56.00	63.00
2	Kailali	0.00	0.00	4.00	4.00	0.00	28.00	32.00
F204 Total		0.00	0.00	11.00	11.00	0.00	84.00	95.00
Road Reference : F205 : Nijgadh-Pataura-Bankul-Gaur								
1	Rautahat	0.00	0.00	0.00	0.00	0.00	48.00	48.00
2	Bara	0.00	0.00	0.00	0.00	0.00	8.00	8.00
F205 Total		0.00	0.00	0.00	0.00	0.00	56.00	56.00
Road Reference : F206 : Gaur-Pipara-Samanpur-Santapur-Nunthar Road								
1	Rautahat	0.00	0.00	0.00	0.00	0.00	38.00	38.00
F206 Total		0.00	0.00	0.00	0.00	0.00	38.00	38.00
Road Reference : F207 : Parsa-Bara-Rautahat-Gandaknahr Road								
1	Rautahat	0.00	0.00	0.00	0.00	0.00	5.50	5.50
2	Bara	0.00	0.00	0.00	0.00	0.00	42.00	42.00
3	Parsa	0.00	0.00	0.00	0.00	0.00	32.50	32.50
F207 Total		0.00	0.00	0.00	0.00	0.00	80.00	80.00
Road Reference : F208 : Triveni-Sanahi-Gandak Nahar Sadak-Nawalparasi								
1	Nawalparasi	0.00	0.00	0.00	0.00	0.00	81.00	81.00
F208 Total		0.00	0.00	0.00	0.00	0.00	81.00	81.00
Grand Total		5570.55	1888.49	4173.55	11632.58	413.82	2757.70	14804.10

ANNEX-4

Schematic Diagram of Strategic Road Network 2011/12

