

**GOVERNMENT OF NEPAL**

**MINISTRY OF PHYSICAL PLANNING AND WORKS**

**DEPARTMENT OF ROADS**

**MECHANICAL BRANCH**

**ANNUAL REPORT**  
**(Fiscal Year 2064-65)**

# TABLE OF CONTENTS

	<u>Page No.</u>
<b>EXECUTIVE SUMMARY</b>	<b>1</b>
<b>CHAPTER 1</b>	<b>2</b>
INTRODUCTION	2
<b>CHAPTER 2</b>	<b>3</b>
OBJECTIVE AND ACTIVITIES	3
2.1 <i>Objective of Mechanical Branch</i>	3
2.2 <i>Activities of Mechanical Branch</i>	3
<b>CHAPTER 3</b>	<b>5</b>
ORGANIZATION STRUCTURE	5
<b>CHAPTER 4</b>	<b>7</b>
RESOURCES	7
4.1 <i>Active Equipment</i>	7
4.2 <i>Manpower</i>	9
4.3 <i>Budget and Expenditure</i>	9
<b>CHAPTER 5</b>	<b>11</b>
ACCOMPLISHMENTS	11
5.1 <i>Accomplishment of Mechanical Branch at Head Office</i>	11
5.2 <i>Repair and Maintenance of Equipment and Vehicles</i>	12
5.3 <i>Equipment Utilization</i>	13
5.4 <i>Theoretical Hire</i>	16
5.5 <i>Actual Hire Revenue</i>	18
<b>CHAPTER 6</b>	<b>20</b>
OPERATING PROFIT AND LOSS ANALYSIS	20
<b>CHAPTER 7</b>	<b>21</b>
SKILL DEVELOPMENT	21
<b>CHAPTER 8</b>	<b>23</b>
AUCTION	23
<b>CHAPTER 9</b>	<b>24</b>
AUDIT REPORT	24
<b>CHAPTER 10</b>	<b>25</b>
ISSUES	25
10.1 <i>Equipment Policy</i>	25
10.2 <i>Old and Unreliable fleet of equipment</i>	25
10.3 <i>Vehicle Replacement Need</i>	26
10.4 <i>Under Utilization of Equipment</i>	26
10.5 <i>Manpower Planning</i>	26
10.6 <i>Training Need</i>	27
10.7 <i>Relocation and Refurbishment of Workshops</i>	27
10.8 <i>Workshop Tools and Equipment</i>	27
10.9 <i>Equipment Demand by External Agencies</i>	28
<b>CHAPTER 11</b>	<b>29</b>
CONCLUSION	29

## List of Annex es

Annex	Description	Page No.
Annex 1A	List of Active Equipment	31
Annex 1B	List of Active Equipment owned by Projects and MTC	43
Annex 2	Budget and Expenditure for Fiscal year 2064/65	
Annex 2A	Budget and Expenditure FY 2064/65 Budget Heading 48-3-150	44
Annex 2B	Budget and Expenditure FY 2064/65 Budget Heading 48-4-670	45
Annex 2C	Budget and Expenditure FY 2064/65 Budget Heading 48-4-555	48
Annex 2D	Budget and Expenditure FY 2064/65 Budget Heading 48-4-695 (Road Board)	50
Annex 2E	Budget and Expenditure FY 2064/65 Revolving Fund	51
Annex 2F	Summary of Budget and Expenditure for Repair and Maintenance FY 2064/65	53
Annex 3	Spare Part Procurement by Mechanical Branch in the Fiscal year 2064/65	54
Annex 4	Proposed New Hire Rate	55
Annex 5	Utilization of Equipment in the Fiscal year 2064/65	59
Annex 6	Theoretical Hire of Fiscal year 2064/65	61
Annex 7	Income and Expenditure of Fiscal Year 2064/65	63
Annex 8	List of Auctioned Equipment in the Fiscal year 2064/65	64

## EXECUTIVE SUMMARY

Department of Roads (DoR) holds a large fleet of construction equipment and supervision vehicles. Mechanical Branch is responsible for their management.

There are 486 units of active equipment in DoR. Average age of the equipment is 16.4 years.

In the fiscal year 2064/65, 5 numbers of equipment have been utilized for more than 1000 hours and 53 units have run between 500 - 1000 hours. Total theoretical hire on shift basis amounted to Rs. 17,16,09,420 total actual hire revenue collected was Rs. 3,10,12,871 and the gross income was Rs. 20,26,22,291. Total expenditure was Rs. 14,81,77,033 including Rs. 5,26,87,020 for repair and maintenance. Hence, the operating profit was Rs. 5,44,45,258. The audited financial irregularities have reduced considerably. There was no audit objection in 6 offices of HEDs and MOs in the Fiscal Year 2064/65 and also there was no remaining audit irregularity to be settled in MO Pokhara and MO Dang.

There are some issues that need serious attention. The most important being that the equipment holding policy of DOR must be clear so that Mechanical Branch can plan and optimize the fleet holding, prepare equipment replacement plan, plan manpower recruitment and workshop setups depending upon the utilization policy of the equipment by DoR.

The recent equipment status analysis shows that about 52 % of equipment are older than 15 years and need replacement because they have already crossed economic service life. There is a high demand of reliable supervision vehicles. If equipment and vehicles are not replaced within next few years, it will have detrimental effect in the performance and efficiency of the department.

DoR should also undertake a policy to maintain and construct new roads under forced account to utilize the existing equipment and manpower with some increment in budgetary input in repair, maintenance and operation of equipment so that the output from the scarce resources allocated to DoR can be maximized.

# Chapter 1

## Introduction

Department of Roads (DoR) holds a large fleet of construction equipment. They are essential to maintain the Strategic Road Network (SRN) and to construct new roads under forced account during crisis management. They are also essential not only to clear slides and to keep the road open during rainy season but also to support the contractors to repair and maintain the roads under SRN.

DoR also holds a large fleet of supervision vehicles. Vehicles are one of the most vital logistic supports necessary for smooth operation of different units and offices of DoR.

Mechanical Branch (MB) is responsible for management of the construction equipment and supervision vehicles owned by DoR.

This annual report 206/65 is prepared to reflect the resources, activities and accomplishments of Mechanical Branch and offices under it. It also highlights some of the major issues that need attention. This report is based on the annual report of Heavy Equipment Divisions (HEDs), Mechanical Offices (MOs), Mechanical Training Centre (MTC) and other available information at the head office.

## Chapter 2

### Objective and Activities

#### 2.1 Objective of Mechanical Branch

The primary objective of Mechanical Branch is to manage the construction equipment and supervision vehicles owned by DoR. It mainly includes:

Maintenance management of equipment and vehicles.

- Support operation of construction equipment.
- Fleet Planning.
- Manpower management including skill development.
- Advise policy formulation regarding equipment and vehicle management

#### 2.2 Activities of Mechanical Branch

##### 2.2.1 Activities of Mechanical Branch at Head Office

Major activities of Mechanical Branch are as follows:

- Monitoring of Heavy Equipment Divisions, Mechanical Offices and Mechanical Training Centre.
- Budgeting and Program formulation.
- Equipment procurement.
- Spare parts procurement from the manufacturer.
- Monitoring of auction of equipment & vehicles.
- Monitoring of Revolving Fund.
- Advise equipment and vehicle allocation.
- Support DOR in policy formulation process.

##### 2.2.2 Activities of Heavy Equipment Divisions and Mechanical Offices

Major activities of HEDs and MOs are as follows:

- Repair and maintain equipment owned by the HEDs/MOs.
- Repair and maintain vehicles owned by the Division Road Offices (DROs).
- Avail equipment to the Division Road Offices as per the directions of the Regional Directorate.
- Support and monitor Mechanical Offices (not applicable to MO).
- Support DoR projects.
- Give equipment on hire without affecting the departmental work and administer Revolving Fund from the hire revenue.
- Keep store inventory record of asset owned by the HEDs/MOs.
- Maintain and report necessary records of financial expenditure as per the financial regulation.

- Maintain and report repair, maintenance and operation records of equipments and vehicles as per the directives of the Mechanical Branch.
- Advise Regional Directorate, Division Road Offices and Road Projects related to equipment and vehicles.
- Plan necessary spare parts requirements and send requisition to department for procurement of spare parts from the manufacturer, if necessary.
- Auction economically not viable to repair, obsolete and scrap asset.

### **2.2.3 Activities of Mechanical Training Centre**

- Develop and provide trainings in operation of the construction equipment to DoR employees.
- Develop and provide trainings in repair and maintenance of the construction equipment to DoR employees.
- Develop and provide modular trainings and custom made trainings to other agencies and individuals and administer Revolving Fund from the training fees.
- Keep store inventory record of asset owned by the MTC.
- Maintain and report necessary records of financial expenditure as per the financial regulation.

## Chapter 3

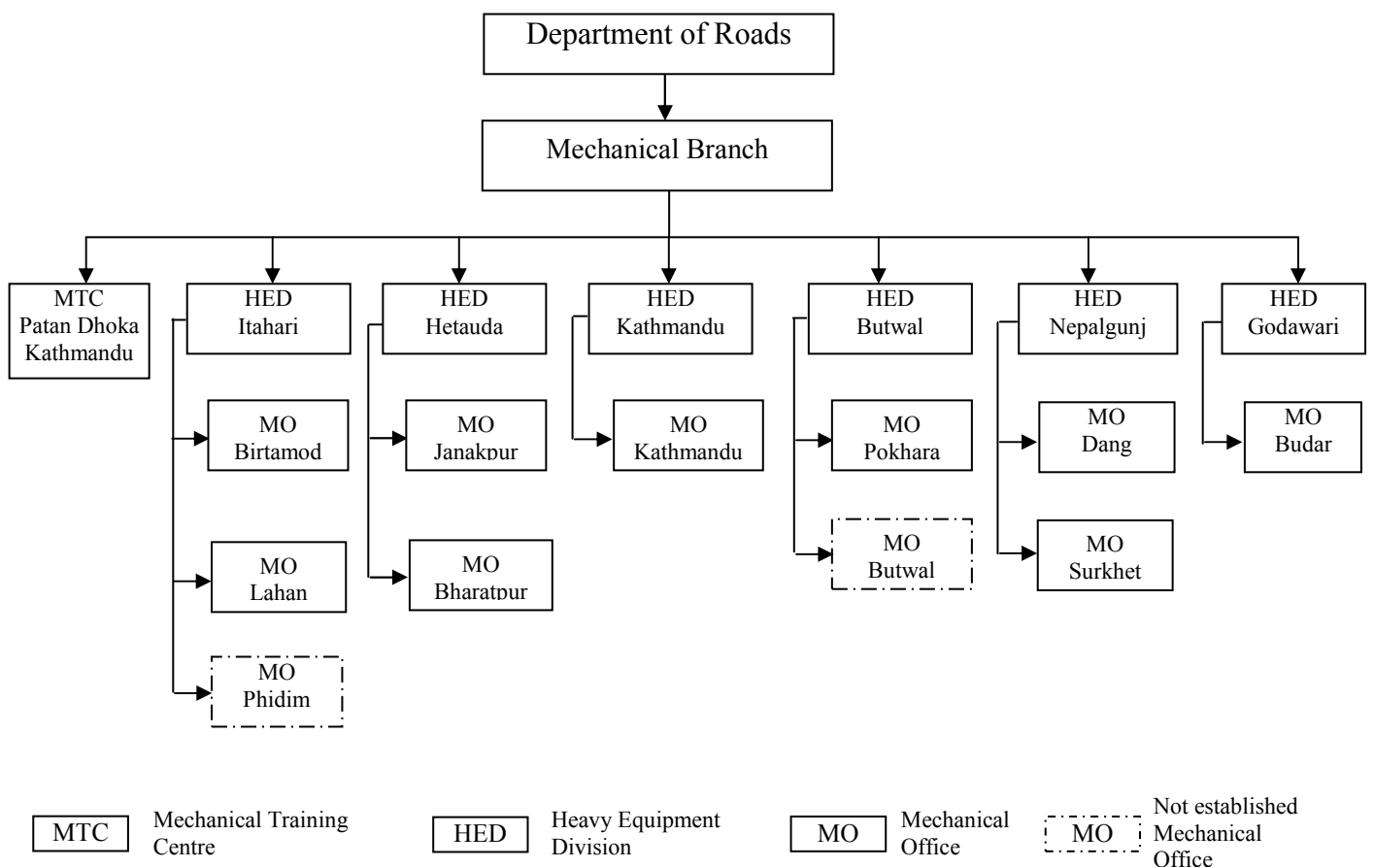
### Organization Structure

Organization structure is very important for successful fulfillment of the objectives of any organization. Mechanical Branch is headed by Deputy Director General similar to other three branches of DoR. As shown in the organization chart, Mechanical Branch has two sections in the department namely:

1. Equipment Maintenance and Management Section
2. Equipment Procurement and Training Section

There are six Heavy Equipment Divisions under Mechanical Branch. They are base workshops with covered work bays and with other ancillaries like electrical, welding machine shops, fabrication shops and spare parts stores. These are located in different development regions at Kathmandu, Hetauda, Butwal, Itahari, Nepalgunj and Godwari. Except central region with two HEDs at Kathmandu and Hetauda, there are one HED at each remaining 4 regions. The HEDs are headed by Senior Divisional Engineers.

### Organization Chart



As shown in the organization chart, there are 9 Mechanical Offices with basic first line maintenance and repair facilities. These workshops are located at Birtamod, Lahan,



Janakpur, Bharatpur, Kathmandu, Pokhara, Dang, Surkhet, and Budar. The MOs are headed by Mechanical Engineers. The MOs at Butwal and Phidim have not been established.

There is also a Mechanical Training Centre headed by Senior Divisional Engineer. It is located at Patan in Kathmandu valley.

## Chapter 4

### Resources

#### 4.1 Active Equipment

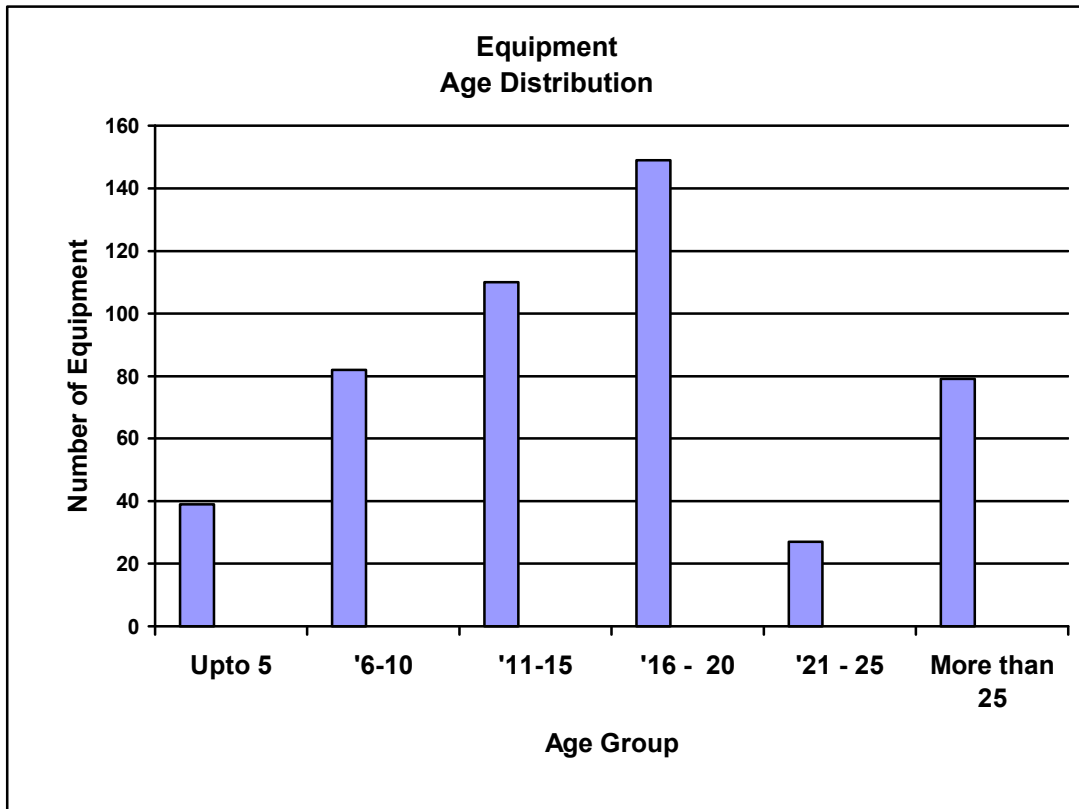
There are 486 units of active equipment in DoR. Summary of different types equipment and their age group is given below in the Table 1. Detailed list of active equipment is given in Annex-1A.

**Table 1**  
**Summary of Active Equipment**

Sr. No.	Departmental Code	Age Type of Equipment	Age Group					Total	Average Age	
			Up to 5 yrs	6 -10 yrs	11 – 15 yrs	16 - 20 yrs	21 – 25 yrs			More than 25
1	001	Asphalt Plant		1			3	1	5	25.2
2	002	Asphalt Paver				1			1	19.0
3	017	Air Compressor		1	1	4		1	7	17.1
4	021	Crane Mobile				4		2	6	22.8
5	024	Concrete Cutter		1	1				2	11.5
6	030	Dozer Wheel				5		3	8	22.0
7	031	Dozer Track	3	5	5	2	4	2	21	15.3
8	032	Distributor Bitumen			2	6			8	15.8
9	035	Mini Dumper	9	18	8	1	2		38	9.6
10	042	Excavator	7	2	3				12	6.8
11	055	Grader Motor			8	6	4	3	21	19.2
12	062	Bitumen heater				1		2	3	32.3
13	068	Loader Wheel	8	2	8	14	3	6	41	15.2
14	070	Loader Backhoe		1	2	5	1		9	17.6
15	086	Pile Driver					1		1	25.0
16	094	Roller 3 Wheel			17	18	6	11	52	19.9
17	096	Roller Pneumatic		8		1		5	14	18.2
18	098	Roller Ped. Vib	2	25					27	8.3
19	101	Roller Vib. Self			10	3	1	1	15	15.9
20	109	Spreader Chip Self Prop.						1	1	32.0
21	114	Truck Crane Mounted		2	2	7			11	16.7
22	115	Truck Flatbed				8		2	10	21.4
23	116	Truck Tipper			22	38	1	34	95	20.2
24	117	Mini Truck			6	4			10	14.9
25	118	Tractor Trailer	2	2		4	1		9	13.7
26	119	Tanker Water		3		12		5	20	19.9
27	123	Tractor	8	11	15				34	9.2
28	138	Plate compactor				4			4	20.0
29	147	Mobile Workshop				1			1	19.0
<b>Total</b>			<b>39</b>	<b>82</b>	<b>110</b>	<b>149</b>	<b>27</b>	<b>79</b>	<b>486</b>	<b>16.4</b>

Average age of the equipment is 16.4 years. 16.2 percent i.e. 79 equipments are more than 25 years old. 5.6 percent i.e. 27 equipments are between 21-25 years. 30.7 percent i.e. 149 equipments are between 16-20 years. Economic service life of equipment is taken as 15 years for normal use in international practice and is also used as DoR standard. Hence, 52.5 percent i.e. 255 equipments are more than 15 years old and has already crossed economic service life and needs replacement in the near future.

**Chart 1**



Wheel dozers, track dozers, loaders, excavators and back hoe loaders are the main equipment used for clearing land slides and keeping the road open during rainy season and they are the vital equipments of DoR. There are 8 wheel dozers. Average age of wheel dozer is 22 years and all are more than 15 years old. There are 21 track dozers. Average age is 15.3 years and 8 are more than 15 years old. There are 41 wheel loaders. Average age is 15.2 years and 23 loaders are more than 15 years old. There are 12 excavators and their average age is 6.8 years. There are 9 back hoe loaders and 6 of them are more than 15 years old.

Some other equipment which needs replacement and special attention are graders, tipping trucks and three wheel rollers. There are 21 graders of which 13 are more than 15 years old. There are 95 tipping trucks of which 73 are more than 15 years old. There are 52 three wheel rollers of which 35 are more than 15 years old.

Pedestrian vibrating rollers, tractors and mini dumpers are some small equipment purchased under SDC grant for routine maintenance and they have average age from 8 to 10 years.

There are 2 equipment owned by Baitadi-Darchula Road Project, 26 equipment owned by Banepa-Sindhuli-Bardibas Project, 2 Tractors owned by Surkhet-Jumla-Road Project and 8 equipment owned by MTC for training purpose. The list of equipment owned by the projects and MTC is given in Annex 1B.

## 4.2 Manpower

There are 771 posts of manpower fulfilled in offices under Mechanical Branch. Summary of different types of manpower fulfilled is given in Table 2. There are still some guard and sweeper in some offices. Guard, gardener and sweeper are hired under service contract in all offices except MO Dang and MO Surkhet.

**Table 2**  
**Summary of Manpower**

<i>Level</i>	<i>Nos.</i>
<b>Engineers (Diff. Level)</b>	<b>35</b>
<b>Mechanics (Diff. Level)</b>	<b>309</b>
<b>Operators (Diff. Level)</b>	<b>170</b>
<b>Store Mechanics (Diff. Level)</b>	<b>52</b>
<b>Drivers (Diff. Level)</b>	<b>61</b>
<b>Administrative Staff (Diff. Level)</b>	<b>73</b>
<b>Peon</b>	<b>52</b>
Guard and Sweeper	19
<b>Total</b>	<b>771</b>

During peak utilization, there is shortage of operators even after multi-skilling. Even the heavy drivers have been gradually trained to operate equipment. There is acute shortage of electricians in the workshops. Moreover, because of present civil service act, all manpower of Non gazetted IV class have been promoted to Non-Gazetted Class III and remaining vacant post of Non-gazetted III and IV class can not be fulfilled. Hence, modernization of repair and maintenance activities is necessary which could be achieved by replacing heavy work needing muscular power with power tools and modern workshop equipment. This would help the organization to keep the manpower in right-size.

## 4.3 Budget and Expenditure

There are five budget headings allocated for repair and maintenance of equipment and vehicles. The regular budget and expenditure of 48-3-150 of HEDs and MOs is given in Annex 2A. Out of total budget of Rs. 10,96,38,000 in 48-3-150 Rs. 53 Lac is allocated for repair and maintenance, major portion of Rs. 9 Corore.6548 Lac is allocated for salary and rest of the portion for other logistics support.

Development Budget 48-4-670 is the main development budget heading allocated for repair and maintenance of equipment and vehicles. The budget allocated is Rs. 1.7 Crore. Budget and expenditure of 48-4-670 is given in Annex 2B.

Development budget 48-4-555 is the budget heading allocated for maintenance of Strategic Road Network (SRN). Since the budget allocated in 48-4-670 is not sufficient for repair and maintenance, Rs. 1 Crore is allocated from 48-4-555 also. Budget and expenditure of 48-4-555 is given in Annex 2C.

Development budget 48-4-695 is the budget released through the Road Board. Rs. 1 Crore is allocated in this heading. This budget is used for repair and maintenance of equipment deployed for emergency maintenance. Budget and expenditure of 48-4-695 is given in Annex 2D.

The equipment are hired and the revenue collected is partially deposited in Revolving Fund Account. Out of 40 percent of the hire revenue deposited, 30 percent is used in repair and maintenance and remaining 10 percent for incentive. The total budget collected in the revolving fund for repair and maintenance is Rs. 1,42,13,180 Budget and expenditure of revolving fund is given in Annex 2E.

Regular and development budget allocated and the expenditures of different offices for repair and maintenance is given in Annex 2F. Summary of annual budget and expenditure of 2064/65 for repair and maintenance is given below in Table 3. The total budget for repair maintenance is Rs. 5,65,13,180 and the total expenditure is Rs. 5,26,87,021 It also includes the contingency and other minor programs of the development budget.

**Table 3**  
**Summary of Annual Budget and Expenditure**  
**For Repair and Maintenance**

Sr. No.	Budget Heading	Budget (Rs.)	Expenditure (Rs.)	Progress (%)
1	483-150 Regular (Repair)	53,00,000	52,96,106	99.9
2	484-670 Development	1,70,00,000	1,63,41,823	96.13
3	484-555 Development	100,00,000	98,60,368	98.60
4	484-695 Development (Road Board)	10,00,000	99,99,545	99.99
5	Revolving Fund	1,42,13,180	1,11,89,179	78.72
	<b>Total</b>	<b>5,65,13,180</b>	<b>5,26,87,021</b>	<b>93.23</b>

In addition, budget allocated for equipment procurement in 48-4-671 is Rs. 88 Lac. Regular Budget allocated for MTC in 483-160 is Rs. 4,38,000 including Rs. 29,50,000 for salary. Development budget allocated for training from departmental human resource development program in 484-681 is Rs. 1,00,000.

## Chapter 5

### Accomplishments

#### 5.1 Accomplishment of Mechanical Branch at Head Office

##### 5.1.1 Wheel Loader Procurement

Procurement programme was approved by National Planning Commission (NPC) to procure 1 unit of Wheel Loader and the initial budget allocated was Rs. 8,00,000 under the budget heading 48-4-671. Additional amount of Rs. 8,00,000 was allocated so the revised budget was Rs. 88,00,000. The letter of credit has been opened to procure one unit of Kawasaki Wheel Loader amounting Rs. 86,00,000. Total expenditure in this budget head is Rs. 87,07,785.73.

##### 5.1.2 Spare Parts Procurement

Mechanical Branch procures spare parts directly from the equipment manufacturer by opening Letter of Credit (L/C) based upon the requisition from HEDs, MOs and MTC. In the F/Y 2064/065, MB has opened L/Cs worth Rs. 6895,000 under budget headings 484-555, 484-670 and Revolving fund. The summary of spare parts procured is given in Annex 3. Expenditure in spare parts procurement including custom duty and contingency is Rs. 3,70,000 in 48-4-555, Rs. 3,79,991 in 48-4-670 and 5,21,149 in Revolving Fund and the total expenditure is Rs. 92,50,240.

Requisitions of spare parts were received from HED Itahari, HED Kathmandu, HED Butwal, HED Nepalgunj, MTC Patandhoka, MO Dang and MO Lahan. Thirteen L/Cs were opened. Most of the spare parts were urgently required. Spare parts were procured for Furukawa Wheel Loader, Kawasaki Wheel Loader, Komatsu Wheel Loader, Komatsu Track Dozer, Caterpillar Track Dozer, Hitachi Excavator, Komatsu Excavator, Stavostroj Pneumatic Roller, Etnyre Bitumen Distributor and Bomag Vibrating Roller. Spare parts for newly procured Kawasaki Wheel Loader was purchased from Revolving fund because of lack of budget in 484-671. In total, 345 items of spare parts were procured.

Among the spare parts procured, some of the items that are worth mentioning are Hydraulic motor and Center Joint of Hitachi Excavator, Turbocharger of Cat Wheel Dozer, Sprocket Assembly of Cat D3 Track Dozer, 10 units of Track Roller of Komatsu Excavator, Gear Pump Assembly of Furukawa Wheel Loader, Brake Device of Stavostroj Pneumatic Roller. .

##### 5.1.3 Tyre Procurement

The letter of credit has been opened to procure 16 sets of 20.5x25 Tyres and tubes of Wheel Loader amounting Rs. 9,35,000 and the total expenditure including advertise and contingency was Rs. 9,91,384 under the budget heading 48-4-555

### **5.14 Annual Report**

Annual report 2063/64 was prepared for the first time to reflect the resources, activities and accomplishments of Mechanical Branch and offices under it. It also highlights some of the major issues that need attention. The report is based on the annual report of Heavy Equipment Divisions (HEDs), Mechanical Offices (MOs), Mechanical Training Centre (MTC) and other available information at the head office.

### **5.15 New Hire Rate**

The existing equipment hire rate of DoR fleet, which was in effect since 2058/04/01 was reviewed and revised in the fiscal year 2064/065. A review committee comprising of four members was constituted for this purpose. As per the recommendation of the review committee, the new hire rate was submitted on 2065/02/12 for approval.

In the proposed model, hire for each lot of equipment purchased is calculated, grouped and moderated based on capacity range, year of purchase, reliability, fleet preference and arithmetical average in some appropriate cases.

This proposed approach has provided different hire rates for one type of equipment depending upon age, capacity and price. The equipment which are new and/or higher capacity have higher rate and on the other hand the hire rate of old and/or lower capacity equipment have lower hire rate than the existing one. The proposed hire rate covers wider range with more categories making it more rational and pragmatic. The proposed hire rate is attached in Annex 4.

## **5.2 Repair and Maintenance of Equipment and Vehicles**

Repair and maintenance is one of the most important activities of HEDs and MOs. Repair and maintenance activity constitutes an integral part of utilization. All the equipment and vehicles need preventive maintenance as per the manufacturer's recommended schedule. Old and unreliable machines breakdown frequently and need more repair activities to keep them in running condition. Performance of HEDs and MOs is reflected by its ability to keep maximum number of old equipment and vehicle in running condition despite resource constraint, most importantly, fund for repair and unavailability of spare parts in time. Lack of adequate training to repair new technology embedded hydraulic and transmission system in construction equipment and inadequate workshop tools as well as workshop equipment are another constraints.

Job cards are opened each time an equipment or a vehicle come for repair and maintenance. The total number of job cards opened for equipment is 1996 and for light vehicles is 1067. The number of job cards opened for equipment and light vehicles for all HEDs and MOs is given in the Table 4. HED Kathmandu has done 530 repair jobs in the light vehicles because it also repair and maintain the vehicles of the DoR head office at Babarmahal.

**Table 4**  
**Summary of Job Card Record for Repair and Maintenance**

Sr.No.	Office	Equipment	Light Vehicles	Total	Remarks
1	HED Itahari	180	29	209	
2	HED Hetauda	196	118	314	
3	HED Kathmandu	423	530	953	
4	HED Butwal	323	90	413	
5	HED Nepalgunj	144	93	237	
6	HED Godawari	124	35	159	
7	MO Birtamod	135	33	168	
8	MO Lahan	46	21	67	
9	MO Janakpur	54	NA	54	NA: Not available
10	MO Bharatpur	96	38	134	
11	MO Kathmandu	63	37	100	
12	MO Pokhara	53	42	95	
13	MO Dang	88	39	127	
14	MO Surkhet	35	24	59	
15	MO Budar	36	5	41	
	<b>Total</b>	<b>1,996</b>	<b>1,134</b>	<b>3,130</b>	

In total, 10 engines of light vehicles, 27 engines of construction equipment, 2 transmissions of construction equipment have been overhauled and 6 major repair of undercarriage performed.

There have been some repairs that are worth mentioning. HED Kathmandu has rehabilitated RD 096 002 Sakai Pneumatic Roller, Na.1 Ga. 313 and Ba.1.Ga. 625 Isuzu Tipping Trucks, Ba.1.Jha. 4290 Mitsubishi Pickup returned by Army in dilapidated condition and Ba.1.Jha. 4107 Mitsubishi Double Cab Pickup handed over by Home Ministry from their auction list. HED Nepalgunj has rehabilitated Bhe.1.Ga. Isuzu Truck which was badly damaged in accident and handed over by Surkhet- Jumla Road project, Bhe.1.Ga. 134 Mitsubishi Pickup handed over by Surkhet Jumla-Road Project in auctionable condition and RD 044-033 Sakai 3 Wheel Roller handed over by HED Butwal. HED Nepalgunj has also rehabilitated RD 055-050 Champion Motor Grader and RD 068-060 Furukawa Loader which was broken down for last two years. HED Godawari has rehabilitated Ba.1.Ka.1511 Isuzu TDJ Truck, RD 068-046 Furukawa Loader after transmission overhaul and Na.1.Jha.448 Isuzu Pickup.HED Itahari has rehabilitated Champion Grader RD 055-049.

### 5.3 Equipment Utilization

Equipment are utilized in various construction activities. They are used by Division Road Offices in emergency maintenance and routine maintenance of roads under force account. They are also used by DROs in recurrent maintenance, periodic maintenance, rehabilitation and new road construction and occasionally by some projects in construction activities. They are also utilized by contractors in departmental contracts



as well as other contracts. Sometime they are hired by local consumer groups and individuals also.

The utilization of equipment is categorized in three groups, heavy equipment such as dozer, loaders, excavators, motor graders, medium equipment such as rollers, tipper trucks, water tankers and transporter such as low bed trailer and flat bed truck. Summary of utilization is given below in Table 5.

**Table 5**  
**Summary of Equipment Utilization**

Sr. No.	Equipment Type	Utilization (Hrs.)
1	Heavy	35978
2	Medium	54386
3	Transporter	3201

5 equipments have run for more than 1000 hours, 15 equipments have run between 750 – 1000 hours, 38 equipments have run between 500 -750 hours and 82 equipments have run between 250 - 500 hours. This data do not include some of the equipment of HED Kathmandu utilized by DRO Patan, and DRO Charikot because of unavailability of log sheet.

Equipment which have been utilized for more than 1000 hours are given below in Table 6.

**Table 6**  
**Summary of Equipment with more than 1000 hours of Utilization**

Sr. No.	Dept. No.	M/C Description	Make Model	Office	Utilization
1	042 020	Excavator	Daewoo SL220	HED Butwal	1080
2	0350 94	Mini Dumper	Chancai FC1	HED Kathmandu	1058
3	035 096	Mini Dumper	Pengyuan FC1.5	HED Kathmandu	1046
4	1190 31	Tanker Water	Isuzu HTR	HED Kathmandu	1016
5	0420 21	Excavator	Daewoo SL220	HED Nepalgunj	1001

Track Dozers, wheel Loaders and excavators which have been utilized between 500-1000 hours are given below in Table 7. They are mostly used for clearing road during rainy season and opening new tracks.

**Table 7**  
**Summary of Some Equipment utilized between 500 - 1000 hours of Utilization**

Sr. No.	Dept.No.	M/C Description	Make Model	Office	Utilization
1	031-055	Dozer Track	BEML D65E8	MO Surkhet	695
2	031-062	Dozer Track	Shandong TY220	HED Kathmandu	677
3	031-071	Dozer Track	Komatsu D53A	HED Kathmandu	574
4	031-073	Dozer Track	Komatsu D53A	HED Godavari	690
5	031-075	Dozer Track	Komatsu D85SESS2A	HED Kathmandu	755

6	042-012	Excavator	Komatsu PC-150	HED Nepalgunj	823
7	042-016	Excavator	Kobelco SK115SR	HED Hetauda	659
8	042-017	Excavator	Daewoo SL220 LC-V	HED Itahari	589
9	042-018	Excavator	Daewoo SL220 LC-V	HED Hetauda	745
10	042-09	Excavator	Daewoo SL220 LC-V	HED Kathmandu	933
11	042-022	Excavator	Daewoo SL220 LC-V	HED Godavari	593
12	068-042	Loader Wheel	Furukawa FL230I	MO Birtamod	900
13	068-043	Loader Wheel	Furukawa FL230I	HED Nepalgunj	557
14	068-062	Loader Wheel	Kawasaki 0ZIV	HED Godavari	763
15	068-063	Loader Wheel	Kawasaki 70ZIV	HED Godavari	503
16	068-079	Loader Wheel	Kawasaki 70ZIV	HED Butwal	721
17	068-082	Loader Wheel	Hyundai HL757-7	HED Hetauda	538
18	068-083	Loader Wheel	Hyundai HL757-7	MO Bharatpur	635
19	068-085	Loader Wheel	Hyundai HL757-7	HED Kathmandu	539
20	068-086	Loader Wheel	Hyundai HL757-7	HED Butwal	757
21	068-088	Loader Wheel	Hyundai HL757-7	HED Godavari	525
22	068-104	Loader Wheel	Komatsu WA100I	HED Hetauda	849

It is worth mentioning that Wheel Loaders of HED Butwal Kawasaki RD 068-079 was utilized for 629 hours under Palpa Division and Hyundai RD 068-086 was utilized for 415 hours for clearing land slides under Butwal Division. It is also worth mentioning that Komatsu Track Dozer RD 031-075 of HED Kathmandu was utilized for 755 hours and Daewoo Excavator RD 042-020 of HED Butwal was utilized for 651 hours for opening new track at 11 Kilo-Chhepetar-Bhaluswara-Barpak Road Project. Similarly, Daewoo Excavator with Breaker RD 042-022 brought from HED Godawari has been used by Saheed Marga for 459 hours for opening new track under departmental work. Komatsu Track Dozer RD031 073 of HED Godawari was utilized for 690 hours by Khodpe-Bajhang Road Project. Daewoo Excavator RD042-020 of HED Nepalgunj was utilized for 546 hours under Surkhet Division. Komatsu Track Dozer RD 031-076 of HED Hetauda was utilized for 477 hours to open track of Chaurjhari-Rukum-Musikot Road under Dang Division and Daewoo Excavator RD 042-018 was utilized for 650 hours at Sonarniya-Mauhlapur at Rauthat district under Hetauda division.

List of total equipments that have run between 500-1000 hours is given in Annex 5.

It has been observed that the utilization pattern varies from one Division Road Office to another. Mini dumpers and pedestrian vibrating rollers, tipping trucks, water tankers, asphalt plant are utilized more at HED Kathmandu and MO Kathmandu than at other HEDs and MOs. At HED Butwal, 2 Minidumpers and some tractors have not been utilized for the whole year. Equipment like Track Dozers and Excavators have comparatively higher utilization.

## 5.4 Theoretical Hire

Theoretical hire is calculated based on equipment utilized by Division Road Offices (DROs) and projects under Forced Account. These equipment are provided to DROs sanctioned by the Regional Director except those needing approval from Director General. Theoretical hire (Shift Basis) is the hire shown in the name of the Divisions on the basis of what would have been charged if it would have been hired by a contractor. Theoretical hire is also calculated based on actual utilization hours. However, theoretical hire based on actual utilization is taken same as theoretical hire based on shift for the equipment whose log sheet has not been received from the DROs. The notification of theoretical hire charge is sent to respective DROs so that they are able to comment on its accuracy and to discourage them from holding the equipment when not necessary.

**Table 8**  
**Summary of Theoretical Hire**

Sr. No.	Office	Theoretical Hire (in Rs.)		Remarks
		Shift	Actual	
1	HED Itahari	173,28,330	85,82,080	
2	HED Hetauda	1,81,93,490	80,92,550	
3	HED Kathmandu	4,10,54,830	3,33,84,710	
4	HED Butwal	2,20,71,980	72,82,773	
5	HED Nepalgunj	1,88,78,160	59,85,540	
6	HED Godawari	1,77,79,560	72,45,441	
7	MO Birtamod	22,59,090	18,68,710	
8	MO Lahan	16,17,530	12,41,390	
9	MO Janakpur	37,44,930	NA	Note: NA Not available
10	MO Bharatpur	50,31,250	NA	
11	MO Kathmandu	57,78,500	29,93,930	
12	MO Pokhara	59,96,830	24,35,635	
13	MO Dang	49,72,380	16,54,407	
14	MO Surkhet	59,60,920	17,21,130	
15	MO Budar	9,41,640	6,95,601	
	<b>Total</b>	<b>17,16,09,420</b>		

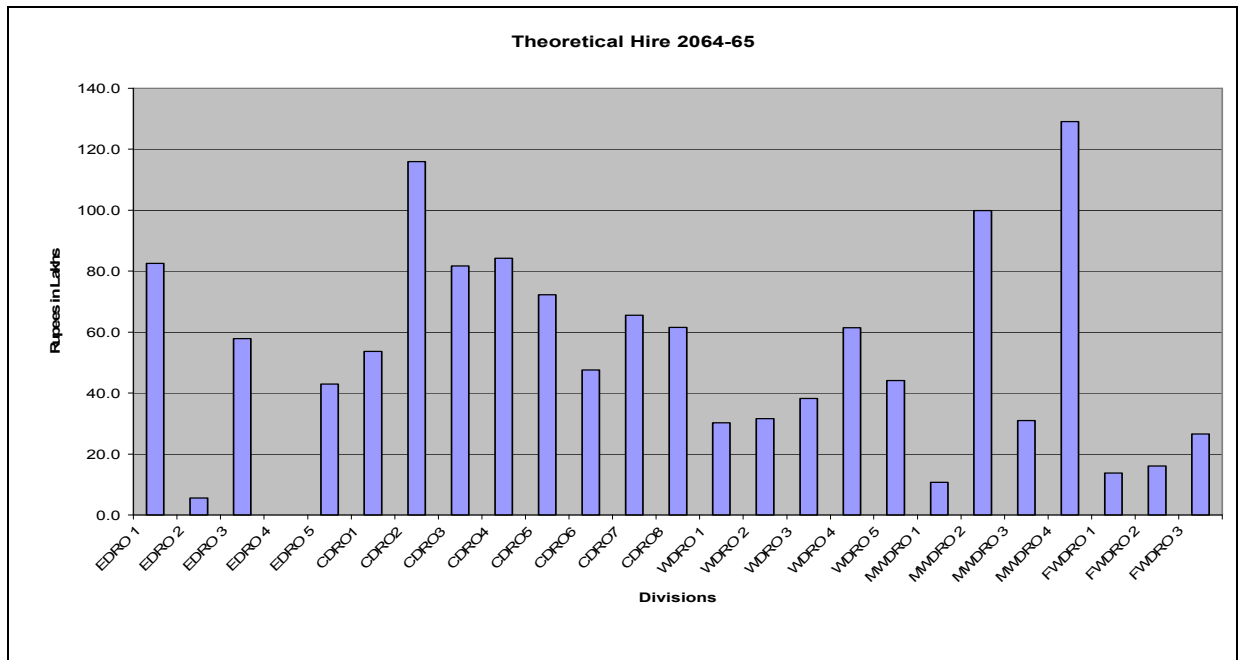
Total theoretical hire on shift basis amounted to Rs. 17,16,09,420. Details of theoretical hire are given in Annex 6. The summary of theoretical hire is given in Table 8.

The theoretical hire of HED Itahari includes theoretical hire of Komatsu Track Dozer hold by Okhaldhunga-Diktal Road Project. The theoretical hire of HED Hetauda includes the Komatsu Track Dozer used by Dang Division for the Chaurjhari-Rukum Musikot Road. Theoretical hire of HED Nepalgunj includes theoretical hire of Daewoo excavator used by Surkhet Division and Daewoo excavator brought from HED Godawari and used by Sahid Marga. Theoretical hire of HED Kathmandu and HED Butwal includes equipment used by Chhepetar-Barpak Road project. Theoretical hire of HED Godawari also includes equipment used by Baitadi Darchula Road Project and Khodpe Bajhang Road Project.

Theoretical hire of the equipments utilized by the DROs is shown above in Chart 2. It is interesting to note that MWDRO 4 Surkhet division, CDRO 2 Kathmandu division and

MWDRO 2 Dang division have used the equipment more than other Divisions whereas EDRO4 Dhankuta division has not used any departmental equipment.

Chart 2



## 5.5 Actual Hire Revenue

HEDs and MOs provide equipment on hire when it is not engaged in departmental use. The equipment are hired by departmental contractors, non departmental contractors different agencies, consumer groups and individuals. The actual hire revenue of all HEDs and MOs showing hire revenue from departmental contractors, non departmental contractors and their percentage share is given below in Table 9.

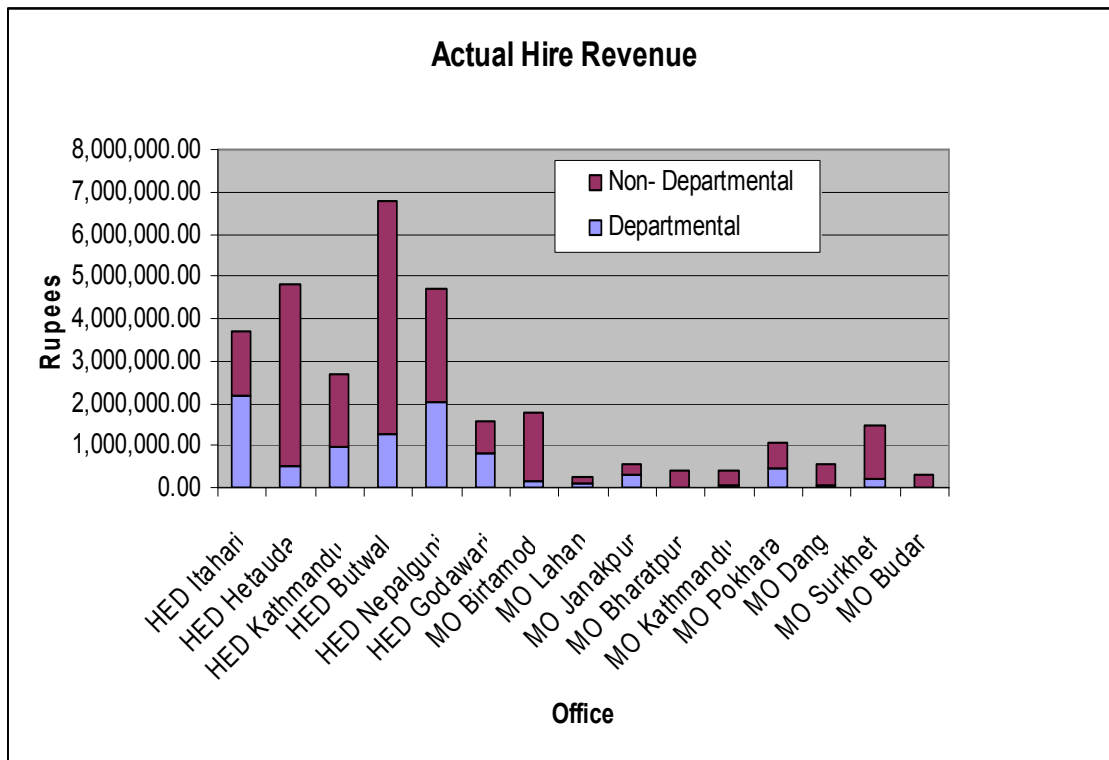
**Table 9**  
**Summary of Actual Hire Revenue**

Sr. No.	Office	Departmental		Non- departmental		Total
		Rs.	%	Rs.	%	
1	HED Itahari	2,167,625.00	59.03	1,504,309.00	40.97	3,671,934.00
2	HED Hetauda	512,486.00	10.62	4,315,439.00	89.38	4,827,925.00
3	HED Kathmandu	957,980.00	35.43	1,745,660.00	64.57	2,703,640.00
4	HED Butwal	1,289,587.50	19.02	5,489,700.40	80.98	6,779,287.90
5	HED Nepalgunj	2,043,726.00	43.44	2,661,438.00	56.56	4,705,164.00
6	HED Godawari	832,660.00	52.26	760,790.00	47.74	1,593,450.00
7	MO Birtamod	130,660.00	7.46	1,619,870.00	92.54	1,750,530.00
8	MO Lahan	96,380.00	38.04	157,010.00	61.96	253,390.00
9	MO Janakpur	317,780.00	54.73	262,810.00	45.27	580,590.00
10	MO Bharatpur	0.00	0.00	415,000.00	100.00	415,000.00
11	MO Kathmandu	55,280.00	14.21	333,780.00	85.79	389,060.00
12	MO Pokhara	463,184.00	44.22	584,216.00	55.78	1,047,400.00

13	MO Dang	68,420.00	12.52	478,240.00	87.48	546,660.00
14	MO Surkhet	200,640.00	13.86	1,246,780.00	86.14	1,447,420.00
15	MO Budar	0.00	0.00	301,420.00	100.00	301,420.00
<b>Total</b>		<b>9,136,408.50</b>	<b>29.46</b>	<b>21,876,462.40</b>	<b>70.54</b>	<b>31,012,870.90</b>

Total hire revenue collected in the Fiscal Year 2064/65 is Rs. 31,012,870.90. The comparative actual hire revenue showing hire revenue from departmental contractor and non-departmental contractor is shown in Chart 3. The hire revenue collected by HED Butwal amounting to Rs. 6,779,287.90 is the highest among the HEDs and Rs. 1,750,530.00 collected by MO Birtamod is the highest among the MOs.

Chart 3



The hire revenue from departmental contractors is Rs. 9,136,408.50 which is 29.46 % of total hire revenue. Highest share of hire revenue from departmental contractor is 59.03 % at HED Itahari.

## Chapter 6

### Operating Profit and Loss Analysis

Operating profit and loss for the fiscal year 2064/65 is calculated based on the expenditure of the Mechanical Branch, expenditure of 6 HEDs and 9 MOs. Expenditure consists of total expenditure in Regular budget head 48-3-150 including salary, total expenditure in repair and maintenance in budget heads 48-4-670, 48-4-555, 48-4-695 (under Roads board) and Revolving Fund. It also includes 9.8 % incentive distributed to employees of HEDs and MOs. The total expenditure was Rs. 1481,77,03. Gross income is sum of theoretical hire based on shift basis and actual hire revenue. Gross income was Rs. 20,26,22,291. The operating profit for the fiscal year 2064/65 is Rs. 5,44,45,258. The labour cost and overhead that have incurred in repair and maintenance of the light vehicles are additional benefit. Details of income and expenditure for individual offices are given in Annex 7. Summary of Income and Expenditure is given below in Table 10.

**Table 10**  
**Summary of Income and Expenditure**

<i>Description</i>	<i>Amount in Rs.</i>
<b>Expenditure</b>	
1. Regular 48-3-150	9,67,51,692
2. Development 48-4-670	1,63,41,823
3. Development 48-4-555	98,60,69
4. Development 48-4-695 (Road Board)	99,9545
5. Revolving Fund (Repair and Maintenance)	11,18,919
6. Revolving Fund (9.8 % Incentive)	40,34,425
<b>Total Expenditure</b>	<b>14817703</b>
<b>Income</b>	
1. Theoretical Hire	17,16,09,420
2. Actual Hire Revenue	3,10,12,871
<b>Gross Income</b>	<b>20,26,22,291</b>
<b>Operating Profit</b>	<b>5,44,45,258</b>

## Chapter 7

### Skill Development

Mechanical training centre is dedicated for the skill development of the mechanics and operators of HEDs and MOs. It also imparts training to the interested individuals as well as trainees from other private and other government organizations. The Government has approved training fees for modular courses. It also organizes custom made courses as per the demand of the clients. It is the only organization in Nepal which gives training on repair, maintenance and operation of construction equipment. Courses have been revised for multi-skilling of mechanical personnel. Autonomous maintenance as a part of Total Productive Maintenance (TPM) has also been incorporated in the operator training courses.

In the fiscal year 206/065, 198 nos. of trainees were trained on different courses. Summary of the trainings conducted is given below in Table 11.

**Table 11**  
**Summary of Training Conducted**

S. N.	DESCRIPTION OF TRAINING	ACHIEVEMENT		REMARKS
		Departmental	Others	
<b>Mechanic Training</b>				
1	Basic Mechanic (3 Month)	15		
2	Hydraulic System	12		
	<b>Total</b>	<b>27</b>		
<b>Operator Training</b>				
2	Dozer Operator	3	2	
3	Motor Grader	4		
4	Excavator	4	5	
5	Back-hoe Loader	4	1	
	<b>Total</b>	<b>15</b>	<b>8</b>	
<b>Custom Made courses</b>				
1	Excavator General Operating System		3	
2	Low-bed Trailer		145	
	<b>Total</b>	<b>0</b>	<b>148</b>	
	<b>Grand Total</b>	<b>42</b>	<b>156</b>	

145 trainees took custom made training in Low-bed Trailer. The duration of training was from one to three days. It was some sort of refresher training so that the trainees



could be recruited for jobs in middle-east countries. For wide and effective marketing, MTC started advertising its programs through FM radios located at various parts of the country.

Under Institutional Strengthening Component of Road Sector Development Program financed by World Bank Grant, MTC have prepared a Business Plan and approved by the Department. Under this program, Bid Document has been prepared to procure Hydraulic Demo Bench and is under the process of approval.

The budget and expenditure of the MTC for the fiscal year 2064/65 is given below in the Table 12. The regular budget 48-3-160 of Rs. 43,81,000 includes Rs. 29,55,000 for salary, Rs. 1,50,000 for program expenses (dedicated primarily to conduct training), Rs. 1,50,000 for TA-DA (dedicated primarily to conduct training) and Rs. 170,000 for fuel (major portion dedicated to operator training).

**Table 12**  
**Summary of Budget and Expenditure of MTC**

Sr. No.	Budget Heading	Budget (Rs.)	Expenditure (Rs.)
1	483-160 Regular	43,81,000.00	40,79,280.18
2	484-681 Development	1800,0000	1800,0000
3	Revolving Fund	14,85,305.40	5,81,258.44
	<b>Total</b>	<b>76,66,305.40</b>	<b>64,60,538.62</b>

Besides the theoretical training fee for providing training to DoR employees, actual income from the training fee for providing training to other trainees amount to Rs. 7,93,458 and the actual hire revenue from hiring the equipment when not engaged in the training was Rs. 1,60,092

## Chapter 8

### Auction

The department has a policy to auction equipment and vehicles which are economically not viable to repair, obsolete and scrap asset. HEDs and MOs are required to get approval from Mechanical Branch to initiate auction process after yearly assessment. Despite, equipment and vehicles being economically not viable, they are not allowed to auction in case similar make and model of equipment or vehicles are running in other HEDs/MOs because they are sometime very useful for cannibalizing. The detail list of equipment and vehicles auctioned in FY 2064/65 is given in Annex 8. Auction status in the F/Y 2064/06 is given below in Table 13 .

**Table 13**  
**Auction Status**

Office	Details of Auction	Date of initial approval to initiate Auction from Mechanical Branch	Date of Final approval for Auction from DOR	Date of Auction from the concerned office
HED, Kathmandu	19 units of equipments, vehicles, motorcycle , tyre,tube battery,and scraps (Rs.5,66,412.50 incl VAT)			2064.04.06
HED, Butwal	19 units of equipments, vehicles, tyre,tube, battery , tools, lubricating oil and scraps (Rs.17,92,208.25 incl VAT)		2064.10.8	2065.03.05
HED, Nepalgunj	15 units of equipments, vehicles, motorcycle, tyre, tube, flaps and battery		2065.0.20	
HED, Kathmandu	43 units of equipments, vehicles and motorcycle	2065.03.26		
MO, Dang	16 units of equipments, vehicles,	2065.03.26		
DRO, Mahendranagar	23 units of equipments, vehicles,	2064.12.10		

## Chapter 9

### Audit Report

Mechanical branch, HEDs, MOs and MTC have given due attention towards financial irregularities to minimize audit objection. In the fiscal year 2064/65, HED Itahari, HED Neplagunj, MO Lahan, MO Bharatpur, MO Pokhara, MO Dang, MO Surkhet have no financial irregularities. There is no financial irregularity remaining to be settled in MO Pokhara and MO Dang.

In the fiscal year 2064/65, there was financial irregularities amounting to Rs. 15 Lacs 21 Thousand. Audit report is yet to be received for Mechanical Branch, HED Kathmandu and MO Kathmandu. Total financial irregularities settled amount to Rs. 45 Lacs 66 Thousand and financial irregularities remaining to be settled amount to Rs. 1 Crore 23 Lacs 82 Thousand. The summary of financial irregularities status of fiscal year 2064/65 is given below in Table 14.

**Table 14**  
**Summary of Financial Irregularities Status**

Rs. in Thousand				
Sr. No.	Office	Financial Irregularities of F/Y 064-05	Financial Irregularities settled in F/Y 064-05	Financial Irregularities remaining till F/Y 064-05
1	Mechanical Branch	944	3230	948
2	HED Itahari	0	1121	220
3	HED Hetauda	78		96
4	HED Kathmandu		3	290
5	HED Butwal	290	17	502
6	HED Nepalgunj	0	33	3
7	HED Godawari	166		4671
8	MO Birtamod	7		8
9	MO Lahan	0		7
10	MO Janakpur	18		79
11	MO Bharatpur	0		1
12	MO Kathmandu		134	642
13	MO Pokhara	0		
14	MO Dang	0		
15	MO Surkhet	0	9	234
16	MO Budar	18	10	1307
17	MTC	35	19	668
	<b>Total</b>	<b>152</b>	<b>466</b>	<b>12382</b>

## Chapter 10

### Issues

#### 10.1 Equipment Policy

The department seems to lack clear policy for holding construction equipment and its utilization. World Bank has been the main donor for supporting DoR with equipment need. During Road Maintenance Development Program (RMDP) and Road Sector Development Program (RSDP) World Bank has not supported for procuring new construction equipment. World Bank has a view that all new construction, repair and maintenance of road will be done by outsourcing and contractors own or will own required equipment. The fiscal policy of the government also limits utilization of equipment under forced account. DoR also seems to have adopted the policy of utilizing the equipment only for clearing the slides and opening the road during rainy season.

However, the record of equipment utilization shows that it has not decreased rather there was a great demand of earth moving equipment to open new tracks at various parts of the country. In fact, the department could not fulfill the required demand because of lack of new and reliable equipments specially big track dozers and excavators with breaker. It was found from the construction experience of 11 Kilo-Chhepetar-Bhaluswara-Barpak Road that a combination of big track dozer and powerful excavator with breaker opens the track faster because it is easier to break and remove the hard rocks with the combination

Moreover, private sectors still do not hold sufficient number of construction equipment and they are still hiring equipment from DoR to fulfill their contractual obligations. Even the big contractors involved in the RMDP and RNDP have hired significant numbers of DoR Equipment. During crisis management of new construction, periodic maintenance, recurrent maintenance and rehabilitation, DoR has always relied on its own equipment. Hence, DoR needs to have a clear policy regarding what will be the use of equipment, where it will be used and how it will be used.

Mechanical Branch can optimize the fleet holding, prepare equipment replacement plan, plan manpower recruitment and workshop setups depending upon the utilization policy of equipment to ensure successful implementation of the programme of DoR.

#### 10.2 Old and Unreliable fleet of equipment

The fleet of construction equipment owned by DoR is very old. The average age of equipment is 16.4 years old. 52.5 percent equipment is older than 15 years and has crossed its service life. The equipment that is essential for rainy season is insufficient in numbers. 23 units of loaders are more than 15 years old and need immediate replacement. The road length is increasing every year and most of the new roads constructed are hilly roads that require equipment for clearing land slides. Hence, DoR needs to replace old equipment as well as procure additional equipment to maintain increasing length of new road.

DoR will probably soon face a crisis during rainy season and it will have detrimental effect in the performance of DoR. Moreover, other equipments are also getting old and if they are not replaced and replenished, DoR will not be able to support not only departmental need for using in forced account and crisis management but also the contractor's need.

### **10.3 Vehicle Replacement Need**

Vehicles are one of the most vital logistic supports necessary for smooth operation of different units and offices of DoR. There are about 140 vehicles currently in use in the department. Only about 50 % vehicles are reliable. There has been continuous demand of reliable vehicles by most of the Division Road Offices. Vehicles in DoR are remarkably inadequate. To keep a reliable fleet of minimal size, 144 units of vehicles are required. At least, 28 vehicles need immediate replacement and 75 vehicles in total need to be replaced within 10 years. Vehicle Replacement Plan submitted by the Mechanical branch in the Fiscal year 2063 64. The department should seriously consider replacing unreliable vehicles.

If vehicles, that are very old and unreliable, are not replaced in near future, there will be a huge shortage of reliable vehicles and will have detrimental effect in the effectiveness and efficiency of the department.

### **10.4 Under Utilization of Equipment**

The change in government policy has constricted the former way of carrying out construction and maintenance activities under forced-account using equipment. DoR is still the owner of largest fleet of construction equipment. From Jestha to Ashwin, the workshops are fully loaded with repair and maintenance of the equipment necessary for deployment in rainy season. From Kartick to Baisakh, there is not sufficient load for the mechanics as well as operators. There are still a significant number of equipment which have yearly utilization less than 250 hours. This is far below the economic standard necessary for holding the fleet. The hire rate is based on 1000 hours, however 500 hours of utilization can be taken as good utilization. Except pedestrian vibrating rollers, other small equipments like mini dumper and tractors procured under SMDP program by Swiss Grant has not been fully utilized as envisaged by the project. The exception being mini dumpers utilization by Kathmandu division.

Hence, DoR should undertake a policy to maintain and construct new roads under forced account to utilize the existing equipment.

### **10.5 Manpower Planning**

It is already pointed out that workshop load is seasonal. Lack of equipment holding policy is having detrimental effect in manpower planning. There has been no recruitment of fresh mechanics and operators for more than six - seven years. Number of mechanics and operators are decreasing because of compulsory retirement.

Moreover, every year some manpower is resigning. There is acute shortage of some manpower in some HEDs and MOs. Mechanical Branch is working out on right sizing the organization to match the fleet size by multi-skilling some operators and out sourcing some of the jobs.

It is essential to have a clear equipment holding policy so that necessary manpower can be planned and new recruitment initiated. Otherwise, there can be shortage of manpower having adverse effect in the performance of the HEDs and MOs.

## 10.6 Training Need

With the advancement in the technology, the new equipments are equipped with sophisticated electronic control for fuel and hydraulic system with computerized self diagnosis system. HEDs and MOs are already using hit and trial method for repairing such equipment instead of adopting proper systematic diagnosis. Hence, it is essential to enhance the training capacity of the MTC. Moreover, new excavators and graders are equipped with computer control for increasing performance of operators. MTC is the only institute in the country training and upgrading operators and mechanics necessary not only for DoR but also for the construction industry of Nepal. Moreover, there is increasing demand of skilled operators and mechanics for recruitment in Malaysia and Gulf Countries.

A serious thought in national perspective should be given to equip MTC with modern training aids and equipments as well as upgrade trainers if MTC is to fulfill its planned objective.

## 10.7 Relocation and Refurbishment of Workshops

MO Kathmandu has been temporarily shifted to MTC two years back when it was **decided** to handover the premise of Kathmandu Division, MO Kathmandu and Central region Directorate at Minbhawan to construct Civil Service Hospital. Similarly, MO Surkhet has been shifted to “Gharelu Tatha Sana Udhyog Bikash Samiti’s workshop shed after the workshop at Subbakuna was damaged by then Maoist movement. Hence, relocation of MO Kathmandu should be planned as well as permanent owning of current workshop used by MO Surkhet should be initiated. It is also necessary to construct new workshop for MO Kathmandu and refurbish workshop of MO Surkhet. Other HEDs and MOs have also become old and some regular maintenance budget to repair the workshop building needs to be allocated.

*(Note: By the time this report is written, MO Kathmandu has been shifted at the premises of Bhaktapur Division and renamed MO Bhaktapur. Bhaktapur Division has been instructed to provide necessary land from its premises. Urban Development and Physical Planning department has been instructed to plan and construct the workshop)*

## 10.8 Workshop Tools and Equipment

Most of the hand tools and workshop tools at all HEDs and MOs are old and worn out. Some hand tools were purchased in the FY 2062/63, otherwise all hand tools and workshop tools are older than 10 years. Workplace environment at all HEDs and MOs is traditional requiring more man power to perform jobs requiring heavy lifting and

shifting. It is necessary to gradually modernize the workshops with modern power tools, diagnostic tools and overhead cranes to improve the performance and efficiency. Modernize training set up will also be necessary at MTC to train the mechanics.

Downsizing of mechanic manpower will be possible if the workshops are modernized.

Safety is still in low priority. There have been occasional accidents at the workshop because the mechanics and operators sometimes do not follow simple safety rules or sometimes there are not adequate gadgets. Modern workshops and safety training will not only encourage the mechanics and operators to adopt safety practices but it will also motivate them.

### **10.9 Equipment Demand by External Agencies**

Occasionally, construction equipment like dozers, loaders, excavators, graders, trucks are requested to be made available free of cost by DDCs, VDCs, Nagar Palikas and User Groups. Through a press release in 2054 by the Ministry, external agencies are not allowed to use DoR equipment free of cost. Equipment should not be given free of cost to external agencies because,

- Huge number of applications are received which become unmanageable.
- Sometimes equipment are not returned in time or not returned at all. HEDs/MOs use to face protest from the local people while trying to take it back to the yard. Some equipment, which could not be returned have been handed over to the Nepal Army.
- If the equipment breakdown, sometimes no body take care arising problem of vandalism and security.
- Excessive use of equipment results in shortage of allocated fund for repair and maintenance resulting in unavailability of equipment during emergency maintenance.
- It causes adverse effect in environment and rural employment.
- If equipment is used by other agencies except by DOR offices on forced account or for security purpose, there will be objection by Auditor General's office.

## Chapter 11

### Conclusion

Department of Roads holds a large fleet of construction equipment and supervision vehicles. Mechanical Branch is responsible for their management.

There are 486 units of active equipment in DoR. Average age of the equipment is 16.4 years. 255 units (52.5 %) of equipments are more than 15 years old and have already crossed economic service life and needs replacement.

There are 771 posts fulfilled for offices under Mechanical Branch. The main workforce fulfilled consists of 309 mechanics and 170 operators of different levels.

The total budget allocated for repair maintenance is Rs. 565,12,580 and the total expenditure is Rs. 5,26,87,020 including regular, development budget and revolving fund.

In the fiscal year 2064/65, 5 numbers of equipment have been utilized for more than 1000 hours and 53 units have run between 500 - 1000 hours. Total theoretical hire on shift basis amounted to Rs 17,16,09,420 total actual hire revenue collected was Rs. 3,10,12,871. Gross income was Rs. 20,26,22,291 and the total expenditure was Rs. 14,81,77,033 The operating profit was Rs. 5,44,45,258 Hence, it proves that Mechanical Branch together with HEDs and MOs are assets rather than liabilities with an extra benefit of light vehicle repair and maintenance workshops.

In the Fiscal year 2064/65, 38 units of equipment, vehicles and motorcycle were auctioned. 198 were trained at MTC. The financial irregularities have reduced considerably with no financial irregularities in 6 offices of HEDs and MOs. There are no audited irregularities to be settled in MO Pokhara and MO Dang.

There are some issues that need serious attention. Most importantly, the equipment holding policy of DOR must be clear so that Mechanical Branch can optimize the fleet holding, prepare equipment replacement plan, plan manpower recruitment and workshop setups depending upon the utilization policy of the equipment by DoR.

DoR needs to replace old equipment, otherwise DoR will soon face a crisis during rainy season and crisis management and it will have a detrimental effect in the performance of DoR.

There is a high demand of reliable supervision vehicles. If vehicles are not replaced, there will be a huge shortage of reliable vehicles and it will have adverse effect in the efficiency and effectiveness of the department.

To increase the performance of HEDs and MOs, regular budget must be provided to maintain the workshop, replace worn out tools, modernize workshop with modern tools. Special emphasis should be given to develop MTC so that it can train and develop the necessary skill to cope with the challenge of maintaining and operating equipment fitted with modern sophisticated components.



Last but not the least, DoR should also undertake a policy to maintain and construct new roads under forced account to utilize the existing equipment and manpower with some increment in budgetary input in repair, maintenance and operation of equipment so that the output from the scarce resources allocated to DoR can be maximized

## **ANNEX**

## ANNEX-1A

## List of Active Equipment

Sr. No.	Sr. No. by Type of M/C	Regd No.	Dept.No.	M/C Description	Make Model	Age	Office
1	1		001-001	Asphalt Plant	Marshal	42 *	HED Kathmandu
2	2		001-004	Asphalt Plant	Brahm Miller	25	HED Kathmandu
3	3		001-007	Asphalt Plant	Brahm Miller	25	HED Kathmandu
4	4		001-008	Asphalt Plant	Brahm Miller	25	HED Kathmandu
5	5		001-013	Asphalt Plant	Universal Sport Mix	9	HED Kathmandu
6	1	PHU64-02	002-002	Asphalt Paver	Blaw -Knox / BK 165	19	HED Kathmandu
7	1		017-021	Air Compressor	Kirloskar	27	MO Pokhara
8	2		017-04 7	Air Compressor	AtlasCopco	14	MO Budar
9	3		017-055	Air Compressor	Kirloskar	9	HED Hetauda
10	4		017-056	Air Compressor	Holman	18	HED Itahari
11	5		017-058	Air Compressor	Holman	18	HED Butwal
12	6		017-059	Air Compressor	Altas copco	17 *	HED Kathmandu
13	7		017-060	Air Compressor	Altas copco	17 *	HED Kathmandu
14	1	Bhe.1.Ga.68	021-002	Crane Mobile	Tadano TS150 L	29	HED Nepalgunj
15	2		021-003	Crane Mobile	Tadano KB100-L	28	HED Godavari
16	3		021-004	Crane Mobile	Tadano TS100-L	20	HED Kathmandu
17	4	Na.1.Ga.359	021-005	Crane Mobile	Tadano TS100-L	20	HED Hetauda
18	5	Lu.1.Ga.2	021-006	Crane Mobile	Tadano TS100-L	20	HED Butwal
19	6	Ko.1.Ga.43	021-007	Crane Mobile	Tadano TS100-L	20	HED Itahari
20	1		024-003	Concrete Cutter	Weber	10	MO Dang
21	2		024-007	Concrete Cutter	Stihl, Germany	13	MO Pokhara
22	1		030-009	Dozer Wheel	Cat 814	27	HED Kathmandu
23	2		030-010	Dozer Wheel	Hanomag D66C	26	HED Hetauda
24	3		030-011	Dozer Wheel	Hanomag D66C	26	HED Hetauda
25	4		030-012	Dozer Wheel	Hanomag D66D	20	HED Butwal
26	5		030-013	Dozer Wheel	Hanomag D66D	20	HED Butwal
27	6		030-014	Dozer Wheel	Hanomag D66D	20	HED Itahari
28	7		030-017	Dozer Wheel	Hanomag D66D	20	HED Nepalgunj
29	8		030-018	Dozer Wheel	Hanomag D66D	17	HED Godavari
30	1		031-033	Dozer Track	MF D700C	29	HED Butwal
31	2		031 045	Dozer Track	Komatsu D85	25	HED Hetauda
32	3		031-054	Dozer Track	BEML D65E8	15	HED Godavari
33	4		031-055	Dozer Track	BEML D65E8	15	MO Surkhet
34	5		031-058	Dozer Track	BEML D65E8	15	HED Godavari
35	6		031-059	Dozer Track	Cat D6H	19	HED Butwal
36	7		031-062	Dozer Track	Shandong TY220	14	HED Kathmandu
37	8		031-065	Dozer Track	Yishan TY160	10	HED Hetauda
38	9		031-066	Dozer Track	Yishan TY160	10	HED Butwal
39	10		031-067	Dozer Track	Yishan TY160	10	HED Nepalgunj
40	11		031-070	Dozer Track	Cat D7G	32	HED Nepalgunj

Sr. No.	Sr. No. by Type of M/C	Regd No.	Dept.No.	M/C Description	Make Model	Age	Office	
41	12		031-071	Dozer Track	Komatsu D53A	9	HED Kathmandu	
42	13		031-073	Dozer Track	Komatsu D53A	9	HED Godavari	
43	14		031-074	Dozer Track	Komatsu D85SESS2A	4	HED Itahari	
44	15		031-075	Dozer Track	Komatsu D85SESS2A	4	HED Kathmandu	
45	16		031-076	Dozer Track	Komatsu D85SESS2A	4	HED Hetauda	
46	17		031-077	Dozer Track	Komatsu D50A	15	*	MO Budar
47	18		031-078	Dozer Track	Cat D7G	17	HED Itahari	
48	19		031-106	Dozer Track	Komatsu D50A-17	22	HED Itahari	
49	20		031-112	Dozer Track	Cat D3B	22	HED Kathmandu	
50	21		031-114	Dozer Track	Komatsu D50A-17	22	MO Dang	
51	1	Na.1.Ga.358	032-007	Bitumen Distributor	Isuzu Hanta DS50	19	HED Hetauda	
52	2	Na.1.Ga.360	032-008	Bitumen Distributor	Isuzu Hanta DS50	19	HED Kathmandu	
53	3	Lu 1 Ga 60	032-009	Bitumen Distributor	Etyre International	16	HED Kathmandu	
54	4	Lu 1 Ga 61	032-010	Bitumen Distributor	Etyre International	16	HED Godavari	
55	5	Lu.A.Ga.62	032-011	Bitumen Distributor	Etyre International	16	HED Butwal	
56	6	Lu 1 Ga 68	032-012	Bitumen Distributor	Etyre International	11	HED Godavari	
57	7	Lu.A.Ga.69	032-013	Bitumen Distributor	Etyre International	12	HED Butwal	
58	8	Ko.1.Ga.65	032-014	Bitumen Distributor	Bedford AWD B/F	18	HED Itahari	
59	1		035-032	Mini Dumper	Sambron TS25M	23	MO Kathmandu	
60	2		035-044	Mini Dumper	Sambron TS25M	23	MO Kathmandu	
61	3		035-053	Mini Dumper	Shaanxi F15	14	MO Kathmandu	
62	4		035-055	Mini Dumper	Shaanxi F15	14	MO Bharatpur	
63	5		035-055	Mini Dumper	Shaanxi F15	14	HED Kathmandu	
64	6		035-056	Mini Dumper	Shaanxi F15	14	HED Kathmandu	
65	7		035-057	Mini Dumper	Shaanxi F15	14	HED Kathmandu	
66	8		035-058	Mini Dumper	Shaanxi F15	14	HED Kathmandu	
67	9		035-061	Mini Dumper	Shaanxi F15	14	MO Kathmandu	
68	10		035-062	Mini Dumper	Shaanxi F15	14	MO Kathmandu	
69	11		035-064	Mini Dumper	Jiangsu F15	9	MO Kathmandu	
70	12		035-065	Mini Dumper	Jiangsu F15	9	MO Kathmandu	
71	13		035-066	Mini Dumper	Jiangsu F15	9	HED Kathmandu	
72	14		035-067	Mini Dumper	Jiangsu F15	9	HED Kathmandu	
73	15		035-069	Mini Dumper	Jiangsu F15	9	HED Kathmandu	
74	16		035-070	Mini Dumper	Jiangsu F15	9	HED Kathmandu	
75	17		035-071	Mini Dumper	Jiangsu F15	9	HED Kathmandu	
76	18		035-072	Mini Dumper	Jiangsu F15	9	HED Kathmandu	
77	19		035-073	Mini Dumper	Jiangsu F15	9	HED Hetauda	
78	20		035-074	Mini Dumper	Jiangsu F15	9	MO Janakpur	
79	21		035-075	Mini Dumper	Jiangsu F15	9	HED Butwal	
80	22		035-076	Mini Dumper	Jiangsu F15	9	HED Butwal	
81	23		035-077	Mini Dumper	Jiangsu F15	9	MO Dang	
82	24		035-078	Mini Dumper	Jiangsu F15	9	HED Nepalgunj	
83	25		035-080	Mini Dumper	Jiangsu F15	9	HED Godavari	

Sr. No.	Sr. No. by Type of M/C	Regd No.	Dept.No.	M/C Description	Make Model	Age	Office
84	26		035-082	Mini Dumper	Jiangsu F15	9	MO Pokhara
85	27		035-083	Mini Dumper	Jiangsu F15	9	MO Dang
86	28	Ko.1.Ga.77	035-087	Mini Dumper	Thawaite	17	MO Birtamod
87	29		035-088	Mini Dumper	Jinhou F15	6	HED Kathmandu
88	30		035-089	Mini Dumper	Jiangsu F15	5	HED Kathmandu
89	31		035-090	Mini Dumper	Jiangsu F15	5	HED Kathmandu
90	32		035-091	Mini Dumper	Jiangsu F15	4	HED Butwal
91	33		035-092	Mini Dumper	Jiangsu F15	4	HED Butwal
92	34		035-093	Mini Dumper	Chancai FC1	3	HED Kathmandu
93	35		035-094	Mini Dumper	Chancai FC1	3	HED Kathmandu
94	36		035-095	Mini Dumper	Pengyuan FC1.5	2	HED Kathmandu
95	37		035-096	Mini Dumper	Pengyuan FC1.5	2	HED Kathmandu
96	38		035-097	Mini Dumper	Pengyuan FC1.5	2	HED Kathmandu
97	1		042-007	Excavator	Hitachi EX200-3	12	HED Kathmandu
98	2		042-008	Excavator	Hitachi EX200-3	12	HED Kathmandu
99	3		042-009	Excavator	Hitachi EX200-3	12	HED Itahari
100	4		042-012	Excavator	Komatsu PC-150	10	HED Nepalgunj
101	5		042-015	Excavator	Daewoo Solar 130	6	HED Butwal
102	6		042-016	Excavator	Kobelco SK115SR	5	HED Hetauda
103	7		042-017	Excavator	Daewoo SL220 LC-V	4	HED Itahari
104	8		042-018	Excavator	Daewoo SL220 LC-V	4	HED Hetauda
105	9		042-019	Excavator	Daewoo SL220 LC-V	4	HED Kathmandu
106	10		042-020	Excavator	Daewoo SL220 LC-V	4	HED Butwal
107	11		042-021	Excavator	Daewoo SL220 LC-V	4	HED Nepalgunj
108	12		042-022	Excavator	Daewoo SL220 LC-V	4	HED Godavari
109	1		055-	Grader Motor	Champion 710	15	* MO Birtamod
110	2		055-017	Grader Motor	Nigata N530 PSA	33	HED Hetauda
111	3		055-035	Grader Motor	Nigata N530 PSA	28	MO Dang
112	4		055-036	Grader Motor	Aveling Barfod	28	MO Lahan
113	5		055-041	Grader Motor	Mitsubishi MG350-R	20	MO Pokhara
114	6		055-042	Grader Motor	Mitsubishi MG350-R	20	HED Kathmandu
115	7		055-043	Grader Motor	Mitsubishi MG350-R	20	HED Itahari
116	8		055-045	Grader Motor	Komatsu GD511R	18	HED Godavari
117	9		055-046	Grader Motor	Komatsu GD511R	18	HED Nepalgunj
118	10		055-049	Grader Motor	Champion 710	15	HED Itahari
119	11		055-050	Grader Motor	Champion 710	15	HED Nepalgunj
120	12		055-051	Grader Motor	Champion 710	15	HED Butwal
121	13		055-053	Grader Motor	Champion 710	15	HED Butwal
122	14		055-054	Grader Motor	Champion 710	15	HED Kathmandu
123	15		055-056	Grader Motor	BEML	12	HED Godavari
124	16		055-058	Grader Motor	Champion 710	11	HED Kathmandu
125	17		055-059	Grader Motor	Cat 120G	17	HED Itahari
126	18	Ja. 1 Yo. 253	055-101	Grader Motor	Komatsu GD405A	22	MO Janakpur

Sr. No.	Sr. No. by Type of M/C	Regd No.	Dept.No.	M/C Description	Make Model	Age	Office
127	19		055-102	Grader Motor	Komatsu GD405A	22	HED Kathmandu
128	20		055-103	Grader Motor	Komatsu GD405A	22	HED Hetauda
129	21		055-104	Grader Motor	Komatsu GD405A	22	HED Hetauda
130	1		062-004	Bitumen heater		41	* HED Kathmandu
131	2		062-008	Bitumen heater	Wibau	36	* HED Kathmandu
132	3		062-014	Bitumen heater	Pac Dynamic	20	MO Pokhara
133	1		068-012	Loader Wheel	Michigan 75III A	35	MO Pokhara
134	2		068-029	Loader Wheel	Kawasaki KSS70	27	HED Kathmandu
135	3		068-031	Loader Wheel	Kawasaki KSS70	27	MO Pokhara
136	4		068-035	Loader Wheel	Kawasaki KSS70	26	HED Nepalgunj
137	5		068-037	Loader Wheel	Kawasaki KSS70	26	MO Pokhara
138	6		068-039	Loader Wheel	Furukawa FL230I	19	HED Butwal
139	7		068-040	Loader Wheel	Furukawa FL230I	19	MO Janakpur
140	8		068-041	Loader Wheel	Furukawa FL230I	19	MO Lahan
141	9		068-042	Loader Wheel	Furukawa FL230I	19	MO Birtamod
142	10		068-043	Loader Wheel	Furukawa FL230I	19	HED Nepalgunj
143	11		068-046	Loader Wheel	Furukawa FL200I	18	MO Budar
144	12		068-048	Loader Wheel	EJCB 430	16	MO Lahan
145	13		068-049	Loader Wheel	EJCB 430	16	HED Butwal
146	14		068-050	Loader Wheel	EJCB 430	16	HED Butwal
147	15		068-051	Loader Wheel	EJCB	16	HED Godavari
148	16		068-052	Loader Wheel	EJCB 430	16	HED Butwal
149	17		068-054	Loader Wheel	EJCB 430	16	HED Hetauda
150	18		068-058	Loader Wheel	EJCB 430	16	HED Kathmandu
151	19		068-060	Loader Wheel	Furukawa FL200-I	14	MO Dang
152	20		068-061	Loader Wheel	Kawasaki 70ZIV	12	HED Butwal
153	21		068-062	Loader Wheel	Kawasaki 70ZIV	12	HED Godavari
154	22		068-063	Loader Wheel	Kawasaki 70ZIV	11	HED Godavari
155	23		068-064	Loader Wheel	Kawasaki-70ZIV	11	HED Kathmandu
156	24		068-065	Loader Wheel	Kawasaki 70ZIV	11	HED Nepalgunj
157	25		068-066	Loader Wheel	Kawasaki 70ZIV	11	HED Itahari
158	26		068-070	Loader Wheel	Kawasaki 70ZIV	11	HED Hetauda
159	27		068-076	Loader Wheel	Cat 950	34	* HED Butwal
160	28		068-078	Loader Wheel	JCB 530	19	HED Butwal
161	29		068-079	Loader Wheel	Kawasaki 70ZIV	7	HED Butwal
162	30		068-080	Loader Wheel	Kawasaki 70ZIV	6	HED Hetauda
163	31		068-081	Loader Wheel	Hyundai HL757-7	4	HED Itahari
164	32		068-082	Loader Wheel	Hyundai HL757-7	4	HED Hetauda
165	33		068-083	Loader Wheel	Hyundai HL757-7	4	MO Bharatpur
166	34		068-084	Loader Wheel	Hyundai HL757-7	4	HED Kathmandu
167	35		068-085	Loader Wheel	Hyundai HL757-7	4	HED Kathmandu
168	36		068-086	Loader Wheel	Hyundai HL757-7	4	HED Butwal
169	37		068-087	Loader Wheel	Hyundai HL757-7	4	HED Nepalgunj

Sr. No.	Sr. No. by Type of M/C	Regd No.	Dept.No.	M/C Description	Make Model	Age	Office
170	38		068-088	Loader Wheel	Hyundai HL757-7	4	HED Godavari
171	39		068-101	Loader Wheel	Komatsu WA100l	22	MO Dang
172	40		068-103	Loader Wheel	Komatsu WA100l	22	HED Hetauda
173	41		068-104	Loader Wheel	Komatsu WA100l	22	HED Hetauda
174	1		070-001	Loader Backhoe	JCB.3CX-4	20	HED Kathmandu
175	2		070-002	Loader Backhoe	JCB.3CX-4	20	HED Kathmandu
176	3		070-003	Loader Backhoe	JCB 3CX-4	20	HED Nepalgunj
177	4		070 004	Loader Backhoe	JCB 3CX-4	20	HED Itahari
178	5		070-006	Loader Backhoe	JCB 3CX-4	20	MO Kathmandu
179	6		070-009	Loader Backhoe	JCB.3CX-4	13	HED Nepalgunj
180	7		070-011	Loader Backhoe	JCB 3CX-4	13	HED Butwal
181	8		070-013	Loader Backhoe	JCB 3CX-4	10	HED Nepalgunj
182	9		070-101	Loader Backhoe	TCM 815	22	HED Hetauda
183	1		086-001	Pile Driver	Sumitomo- LS7808	25	HED Kathmandu
184	1		094-028	Roller 3Wheel	Sakai KD 7606	35	HED Hetauda
185	2		094-031	Roller 3Wheel	Sakai KD 7606	35	HED Kathmandu
186	3		094-033	Roller 3Wheel	Sakai KD 7606	35	HED Nepalgunj
187	4		094-034	Roller 3Wheel	Sakai KD 7606	35	HED Kathmandu
188	5		094-037	Roller 3Wheel	Mc Donald, NC Series	33	HED Kathmandu
189	6		094-049	Roller 3Wheel	Kawasaki KMRH12	16	MO Janakpur
190	7		094-050	Roller 3Wheel	Kawasaki KMRH12	16	MO Surkhet
191	8		094-051	Roller 3Wheel	Kawasaki KMRH12	16	HED Butwal
192	9		094-052	Roller 3Wheel	Kawasaki KMRH12	16	MO Bharatpur
193	10		094-053	Roller 3Wheel	Kawasaki KMRH12	16	MO Lahan
194	11		094-055	Roller 3Wheel	Kawasaki KMRH12	16	MO Pokhara
195	12		094-056	Roller 3Wheel	Kawasaki KMRH12	16	MO Birtamod
196	13		094-059	Roller 3Wheel	Kawasaki KMRH12	16	HED Hetauda
197	14		094-060	Roller 3Wheel	Kawasaki KMRH12	16	MO Pokhara
198	15		094-061	Roller 3Wheel	Kawasaki KMRH12	16	HED Nepalgunj
199	16		094-062	Roller 3Wheel	Kawasaki KMRH12	16	HED Butwal
200	17		094-063	Roller 3Wheel	Kawasaki KMRH12	16	HED Nepalgunj
201	18		094-065	Roller 3Wheel	Sakai KD7608D	28	MO Birtamod
202	19		094-069	Roller 3Wheel	Sakai KD7608D	28	MO Lahan
203	20		094-070	Roller 3Wheel	Sakai KD7606	26	HED Hetauda
204	21		094-071	Roller 3Wheel	Sakai KD7606	26	HED Kathmandu
205	22		094-072	Roller 3Wheel	Sakai KD7606	26	MO Kathmandu
206	23		094-073	Roller 3Wheel	Sakai KD7606	26	HED Hetauda
207	24		094-074	Roller 3Wheel	Kawasaki KMRH12	25	MO Dang
208	25		094-075	Roller 3Wheel	Kawasaki KMRH12	25	MO Bharatpur
209	26		094-084	Roller 3Wheel	Albaret TR 10	23	HED Kathmandu
210	27		094-	Roller 3Wheel	Albaret TR 10	23	HED Kathmandu
211	28		094-089	Roller 3Wheel	Aveling Barford DC012	20	MO Janakpur
212	29		094-091	Roller 3Wheel	Aveling Barford DC012	20	HED Butwal

Sr. No.	Sr. No. by Type of M/C	Regd No.	Dept.No.	M/C Description	Make Model	Age	Office
213	30		094-092	Roller 3Wheel	Aveling Barford DC012	20	HED Hetauda
214	31		094-093	Roller 3Wheel	Aveling Barford DC012	20	HED Butwal
215	32		094-094	Roller 3Wheel	Aveling Barford DC012	20	HED Itahari
216	33		094-095	Roller 3Wheel	Kawasaki KMRH-12D	25	HED Hetauda
217	34		094-096	Roller 3Wheel	Kawasaki KMRH-12D	25	HED Hetauda
218	35		094-106	Roller 3Wheel	Speed Craft DRR10S	15	MO Lahan
219	36		094-107	Roller 3Wheel	Speed Craft DRR10S	15	MO Janakpur
220	37		094-108	Roller 3Wheel	Speed Craft DRR10S	15	MO Janakpur
221	38		094-109	Roller 3Wheel	Speed Craft DRR10S	15	MO Bharatpur
222	39		094-110	Roller 3Wheel	Speed Craft DRR10S	15	MO Kathmandu
223	40		094-111	Roller 3Wheel	Speed Craft DRR10S	15	HED Kathmandu
224	41		094-112	Roller 3Wheel	Speed Craft DRR10S	15	MO Kathmandu
225	42		094-113	Roller 3Wheel	Speed Craft DRR10S	15	MO Pokhara
226	43		094-114	Roller 3Wheel	Speed Craft DRR10S	15	MO Pokhara
227	44		094-116	Roller 3Wheel	Speed Craft DRR10S	15	HED Godavari
228	45		094-117	Roller 3Wheel	Speed Craft DRR10S	15	HED Itahari
229	46		094-119	Roller 3Wheel	Speed Craft DRR10S	15	MO Pokhara
230	47		094-120	Roller 3Wheel	Speed Craft DRR10S	15	HED Nepalgunj
231	48		094-122	Roller 3Wheel	Johs Moller/Romba	13	MO Kathmandu
232	49		094-123	Roller 3Wheel	Johs Moller/Romba	13	HED Kathmandu
233	50		094-124	Roller 3Wheel	Aveling Barford DC011	19	HED Butwal
234	51		094-125	Roller 3Wheel	Aveling Barford DC12	13	HED Godavari
235	52		094-126	Roller 3Wheel	Aveling Barford DC12	13	MO Budar
236	1		096-002	Roller Pneumatic	Sakai TS 7409	35	HED Kathmandu
237	2		096-003	Roller Pneumatic	Sakai TS 7409	35	HED Hetauda
238	3		096-005	Roller Pneumatic	Sakai TS 7409	35	HED Godavari
239	4		096-008	Roller Pneumatic	Sakai TS 7409	27	HED Hetauda
240	5		096-010	Roller Pneumatic	Sakai TS 7409	27	MO Pokhara
241	6		096-013	Roller Pneumatic	Dyanapac CP20	16	HED Itahari
242	7		096-016	Roller Pneumatic	Stavostroj VP200	10	HED Godavari
243	8		096-017	Roller Pneumatic	Stavostroj VP200	10	HED Kathmandu
244	9		096-018	Roller Pneumatic	Stavostroj VP200	10	HED Hetauda
245	10		096-019	Roller Pneumatic	Stavostroj VP200	10	HED Butwal
246	11		096-020	Roller Pneumatic	Stavostroj VP200	10	HED Nepalgunj
247	12		096-021	Roller Pneumatic	Stavostroj VP200	10	HED Itahari
248	13		096-022	Roller Pneumatic	Hamm GRW10	10	MO Budar
249	14		096-023	Roller Pneumatic	Hamm GRW10	10	HED Itahari
250	1		098-	Roller Ped.Vib	Benford	9	HED Kathmandu
251	2		098-070	Roller Ped.Vib	Mortimer CPM 71	10	HED Kathmandu
252	3		098-071	Roller Ped.Vib	Mortimer CPM 71	10	HED Hetauda
253	4		098-074	Roller Ped.Vib	Mortimer CPM 71	10	HED Godavari
254	5		098-076	Roller Ped.Vib	Mortimer CPM 71	10	MO Dang
255	6		098-077	Roller Ped.Vib	Benford	9	MO Janakpur



Sr. No.	Sr. No. by Type of M/C	Regd No.	Dept.No.	M/C Description	Make Model	Age	Office
256	7		098-078	Roller Ped.Vib	Benford	9	HED Hetauda
257	8		098-079	Roller Ped.Vib	Benford	9	MO Pokhara
258	9		098-081	Roller Ped.Vib	Bomag BW71E	9	HED Kathmandu
259	10		098-082	Roller Ped.Vib	Bomag BW71E	9	HED Kathmandu
260	11		098-083	Roller Ped.Vib	Bomag BW71E	9	HED Godavari
261	12		098-084	Roller Ped.Vib	Bomag BW 71E	9	MO Pokhara
262	13		098-087	Roller Ped.Vib	Bomag BW 55E	13	MO Pokhara
263	14		098-092	Roller Ped.Vib	Bomag BW 71E	8	HED Kathmandu
264	15		098-093	Roller Ped.Vib	Bomag BW 71E	8	HED Butwal
265	16		098-095	Roller Ped.Vib	Bomag BW 71E	8	MO Birtamord
266	17		098-097	Roller Ped.Vib	Bomag BW 71E	7	MO Surkhet
267	18		098-098	Roller Ped.Vib	Bomag BW 71E	7	HED Kathmandu
268	19		098-099	Roller Ped.Vib	Bomag BW71E-2	6	MO Lahan
269	20		098-100	Roller Ped.Vib	Bomag BW71E-2	6	HED Nepalgunj
270	21		098-101	Roller Ped.Vib	Bomag BW71E-2	6	HED Nepalgunj
271	22		098-102	Roller Ped.Vib	Bomag BW71E-2	6	HED Butwal
272	23		098-103	Roller Ped.Vib	Bomag BW71E-2	9	HED Kathmandu
273	24		098-104	Roller Ped.Vib	Bomag BW71E-2	9	HED Kathmandu
274	25		098-105	Roller Ped.Vib	Bomag BW71E-2	9	HED Kathmandu
275	26		098-106	Roller Ped.Vib	Bomag BW71E-2	9	HED Kathmandu
276	27		098-107	Roller Ped.Vib	Bomag BW71E-2	4	MO Pokhara
277	28		098-108	Roller Ped.Vib	Bomag BW71E-2	4	HED Butwal
278	1		101-	Roller Vib. Self	Sakai	20	* MO Birtamord
279	2		101-005	Roller Vib. Self	Kawasaki KVR-7T	26	HED Hetauda
280	3		101-007	Roller Vib. Self	Bomag BW172-D2	14	HED Itahari
281	4		101-008	Roller Vib. Self	Bomag BW172-D2	14	HED Kathmandu
282	5		101-009	Roller Vib. Self	Johs Moller VT21	13	MO Kathmandu
283	6		101-010	Roller Vib. Self	Johs Moller VT21	13	MO Kathmandu
284	7		101-011	Roller Vib. Self	Johs Moller VT21	13	HED Butwal
285	8		101-012	Roller Vib. Self	Johs Moller VT21	13	HED Kathmandu
286	9		101-013	Roller Vib. Self	Johs Moller VT21	13	HED Kathmandu
287	10		101-015	Roller Vib. Self	Bomag BW172-D2	12	HED Butwal
288	11		101-016	Roller Vib. Self	L/Turbo W1104	13	* HED Itahari
289	12		101-018	Roller Vib. Self	Dynapac CC21	18	HED Itahari
290	13		101-020	Roller Vib. Self	Aveling Barford VXC111	19	* HED Butwal
291	14		101-022	Roller Vib. Self	Dynapac VR-2CG11	22	MO Pokhara
292	1	PHU 69-01	109-001	Spreader Chip Self Prop.	Phoenix	32	* HED Butwal
293	1	Na.1.Ka.513	114-	Truck Crane Mounted	Tata SE1210B	14	HED Godavari
294	2	Bhe.1.Ga.54	114-001	Truck Crane Mounted	Isuzu HTR	20	HED Nepalgunj
295	3	Ba.1.Ga.1077	114-002	Truck Crane Mounted	Isuzu HTR	20	HED Kathmandu
296	4	Na.1.Ga.362	114-003	Truck Crane Mounted	Isuzu HTR	20	HED Hetauda
297	5	Lu.1.Ga.51	114-004	Truck Crane Mounted	Isuzu HTR	20	HED Butwal
298	6	Ko.1.Ga.33	114-005	Truck Crane Mounted	Isuzu HTR	20	HED Itahari

Sr. No.	Sr. No. by Type of M/C	Regd No.	Dept.No.	M/C Description	Make Model	Age	Office
299	7	Ba.1.Ga.1084	114-006	Truck Crane Mounted	Isuzu HTR	20	MO Kathmandu
300	8	Ba.A. Ga 1235	114-007	Truck Crane Mounted	Tata	14	HED Nepalgunj
301	9	Ja.1.Ga.301	114-010	Truck Crane Mounted	Dong Feng	9	MO Janakpur
302	10	Ga.1.Ga.122	114-011	Truck Crane Mounted	Dong Feng	9	MO Pokhara
303	11	Ko.1.Ga.75	114-012	Truck Crane Mounted	Tata 1210 SE	18	MO Birtamord
304	1	Me.1.Ga.17	115-	Truck flatbed	Ashok Leyland	18	* MO Birtamord
305	2	Bhe.1.Ga67	115-058	Truck flatbed	Isuzu TXD	30	HED Nepalgunj
306	3	Ja.1.Ga.167	115-073	Truck flatbed	Hino EH700	26	MO Janakpur
307	4	Na.1.Ga.356	115-077	Truck flatbed	Isuzu HTR	20	HED Hetauda
308	5	Ba.1.Ga.1076	115-078	Truck flatbed	Isuzu HTR	20	HED Kathmandu
309	6	Lu.1.Ga.52	115-079	Truck flatbed	Isuzu HTR	20	HED Butwal
310	7	Ko.1.Ga.32	115-080	Truck flatbed	Isuzu HTR	20	HED Itahari
311	8	Ba.1.Ga.1130	115-081	Truck flatbed	Isuzu HTR	20	HED Kathmandu
312	9	Ja.1. Ga 229	115-082	Truck flatbed	Isuzu HTR	20	MO Bharatpur
313	10	Ba.1.Ga.1131	115-083	Truck flatbed	Isuzu HTR	20	HED Godavari
314	1	Ba.1.Ga.1220	116-	Truck Tipper	Tata	20	* HED Kathmandu
315	2	Ba.1.Ka. 572	116-	Truck Tipper	Tata SE1210B	20	* HED Hetauda
316	3	Se.1.Ga.52	116-	Truck Tipper	Ashok Leyland	20	* MO Budar
317	4	Na.1.Ga.420	116-	Truck Tipper	Ashok Leyland	20	* MO Budar
318	5	Na.1.Ga.245	116-130	Truck Tipper	Isuzu TXD 40	29	MO Dang
319	6	Na.A.Ga.247	116-132	Truck Tipper	Isuzu TXD 40	29	MO Surkhet
320	7	Na.1.Ga.249	116-133	Truck Tipper	Isuzu TXD 40	29	HED Hetauda
321	8	Na.1.Ga.248	116-136	Truck Tipper	Isuzu TXD 40	29	HED Hetauda
322	9	Ja.1.Ga.125	116-137	Truck Tipper	Isuzu TXD 40	29	MO Janakpur
323	10	Bhe.1.Ga.66	116-140	Truck Tipper	Isuzu TXD 40	29	HED Nepalgunj
324	11	Sa.1. Ga 8	116-144	Truck Tipper	Isuzu SBR322	27	MO Lahan
325	12	Sa.1. Ga 15	116-152	Truck Tipper	Isuzu SBR322	27	MO Lahan
326	13	Se.1.Ga.16	116-155	Truck Tipper	Isuzu SBR322	27	HED Kathmandu
327	14	Me.1.Ga.1	116-156	Truck Tipper	Isuzu SBR322	26	MO Birtamord
328	15	Ja.1.Ga.124	116-160	Truck Tipper	Isuzu SBR322	26	MO Janakpur
329	16	Ja.1.Ga.123	116-161	Truck Tipper	Isuzu SBR322	26	MO Janakpur
330	17	Na.1.Ga.304	116-162	Truck Tipper	Isuzu SBR322	26	HED Hetauda
331	18	Na.1.Ga.306	116-163	Truck Tipper	Isuzu SBR322	26	HED Hetauda
332	19	Na.1.Ga.289	116-176	Truck Tipper	Isuzu SBR322	26	HED Hetauda
333	20	Na.1. Ga 312	116-183	Truck Tipper	Isuzu SBR322	26	MO Bharatpur
334	21	Na.1.Ga.270	116-184	Truck Tipper	Isuzu SBR322	26	MO Kathmandu
335	22	Na.1.Ga.272	116-186	Truck Tipper	Isuzu SBR322	26	HED Hetauda
336	23	Na.1.Ga.274	116-188	Truck Tipper	Isuzu SBR322	26	HED Kathmandu
337	24	Bhe.1.Ga.7	116-192	Truck Tipper	Isuzu SBR322	26	HED Nepalgunj
338	25	Na.A.Ga.275	116-195	Truck Tipper	Isuzu SBR322	26	MO Pokhara
339	26	Na.1.Ga.302	116-198	Truck Tipper	Isuzu SBR322	26	HED Hetauda
340	27	Na.1. Ga 291	116-199	Truck Tipper	Isuzu SBR322	26	MO Bharatpur
341	28	Ba.1. Ga 628	116-204	Truck Tipper	Isuzu SBR322	26	MO Bharatpur

Sr. No.	Sr. No. by Type of M/C	Regd No.	Dept.No.	M/C Description	Make Model	Age	Office
342	29	Ba.1.Ga.629	116-205	Truck Tipper	Isuzu SBR322	26	MO Dang
343	30	Ba.1.Ga.633	116-210	Truck Tipper	Isuzu SBR322	26	MO Pokhara
344	31	Se.1.Ga.29	116-211	Truck Tipper	Isuzu SBR322	26	HED Godavari
345	32	Ba.1.Ga.619	116-212	Truck Tipper	Isuzu SBR322	26	MO Kathmandu
346	33	Ba.1.Ga.631	116-214	Truck Tipper	Isuzu SBR322	26	HED Kathmandu
347	34	Ba.1.Ga.621	116-215	Truck Tipper	Isuzu SBR322	26	MO Kathmandu
348	35	Ba.1.Ga.620	116-216	Truck Tipper	Isuzu SBR322	26	MO Pokhara
349	36	Ba.1.Ga.625	116-217	Truck Tipper	Isuzu SBR322	26	HED Kathmandu
350	37	Ba.1.Ga.617	116-218	Truck Tipper	Isuzu SBR322	26	MO Kathmandu
351	38	Ba.1.Ga.623	116-220	Truck Tipper	Isuzu SBR322	26	HED Kathmandu
352	39	Ja.1.Ga.166	116-223	Truck Tipper	Hino KR-120	25	MO Janakpur
353	40	Lu.1.Ga.55	116-230	Truck Tipper	Isuzu HTR	20	HED Hetauda
354	41	Bhe.1.Ga.49	116-231	Truck Tipper	Isuzu HTR	20	HED Nepalgunj
355	42	Ba.1.Ga.1090	116-232	Truck Tipper	Isuzu HTR	20	HED Kathmandu
356	43	Lu.1.Ga.57	116-233	Truck Tipper	Isuzu HTR	20	HED Butwal
357	44	Lu.1.Ga.54	116-234	Truck Tipper	Isuzu HTR	20	MO Pokhara
358	45	Ba.1.Ga.1083	116-236	Truck Tipper	Isuzu HTR	20	MO Kathmandu
359	46	Lu.1.Ga.56	116-237	Truck Tipper	Isuzu HTR	20	HED Itahari
360	47	Ra1 Ga 2	116-248	Truck Tipper	Ahok Leyland	15	MO Dang
361	48	Na.1.Ga.426	116-250	Truck Tipper	Ashok Leyland	15	HED Hetauda
362	49	Ba.A.Ga.1180	116-252	Truck Tipper	Ashok Leyland	15	HED Butwal
363	50	Bhe.1.Ga.69	116-255	Truck Tipper	Ashok Leyland	15	HED Nepalgunj
364	51	Ko.1 Ga 44	116-262	Truck Tipper	Ashok Leyland ALCO3	14	HED Itahari
365	52	Ko.1.Ga.45	116-263	Truck Tipper	Ashok Leyland ALCO3	14	HED Itahari
366	53	Ko.1.Ga.46	116-264	Truck Tipper	Ashok Leyland ALCO3	14	HED Itahari
367	54	Ko.1.Ga.47	116-265	Truck Tipper	Ashok Leyland ALCO3	14	HED Itahari
368	55	Lu.A.Ga.66	116-266	Truck Tipper	Ashok Leyland ALCO3	14	HED Butwal
369	56	Ba.1.Ga.1283	116-274	Truck Tipper	Tata SE1612	20	* HED Kathmandu
370	57	Bhe.1.Ga.71	116-275	Truck Tipper	Nissan CKB 451	12	HED Nepalgunj
371	58	Bhe.1.Ga.70	116-276	Truck Tipper	Nissan CKB 450	12	HED Nepalgunj
372	59	Ko.1.Ga.48	116-277	Truck Tipper	Ashok Leyland ALCO3	11	MO Birtamord
373	60	Ko.1.Ga.49	116-278	Truck Tipper	Ashok Leyland ALCO3	11	MO Lahan
374	61	Ko.1.Ga.50	116-279	Truck Tipper	Ashok Leyland ALCO3	11	MO Bharatpur
375	62	Ko.1.Ga.51	116-280	Truck Tipper	Ashok Leyland ALCO3	11	HED Hetauda
376	63	Ba.1.Ga.1501	116-281	Truck Tipper	Ashok Leyland ALCO3	11	HED Kathmandu
377	64	Ko.1.Ga.53	116-282	Truck Tipper	Ashok Leyland ALCO3	11	MO Kathmandu
378	65	Ko.A.Ga.54	116-283	Truck Tipper	Ashok Leyland ALCO3	11	HED Butwal
379	66	K.1.Ga.55	116-284	Truck Tipper	Ashok Leyland ALCO3	11	MO Pokhara
380	67	Ko A 56	116-285	Truck Tipper	Ashok Leyland ALCO3	11	MO Dang
381	68	Ko.A.Ga.57	116-286	Truck Tipper	Ashok Leyland ALCO3	11	HED Butwal
382	69	Ko.1.Ga.59	116-288	Truck Tipper	Ashok Leyland ALCO3	11	HED Godavari
383	70	Ba.1.Ka.1511	116-291	Truck Tipper	Isuzu TDJ	20	* HED Godavari
384	71	Ba.1.Ka.1517	116-293	Truck Tipper	Isuzu TDJ	20	* HED Godavari

Sr. No.	Sr. No. by Type of M/C	Regd No.	Dept.No.	M/C Description	Make Model	Age	Office
385	72	Ba1 Ga 1263	116-294	Truck Tipper	Tata 608	20 *	MO Bharatpur
386	73	Ko.1.Ga.74	116-295	Truck Tipper	Tata 1210 SE	18	HED Itahari
387	74	Ko.1.Ga.73	116-296	Truck Tipper	Tata 1210 SE	18	HED Itahari
388	75	Ko.1.Ga.82	116-297	Truck Tipper	Tata 1210 SK	17	HED Itahari
389	76	Ko.1.Ga.81	116-298	Truck Tipper	Tata 1210 SK	17	HED Itahari
390	77	Ko.1.Ga.72	116-299	Truck Tipper	Tata 1210 SK	17	HED Itahari
391	78	Ko.1.Ga. 71	116-30	Truck Tipper	Tata 1210 SK	17	MO Lahan
392	79	Ko.1.Ga.70	116-301	Truck Tipper	Tata 1210 SK	17	HED Itahari
393	80	Ko.1.Ga.69	116-302	Truck Tipper	Tata 1210 SK	17	HED Itahari
394	81	Ba.A.Ka. 2224	116-303	Truck Tipper	Tata 1210B	19	HED Butwal
395	82	Ba.A.2227	116-304	Truck Tipper	Tata 1210B	19	HED Butwal
396	83	Na.A.Ka.573	116-305	Truck Tipper	Tata 1210B	17	HED Butwal
397	84	Na.A.Ka.675	116-306	Truck Tipper	Tata 1210B	17	HED Butwal
398	85	Na.A.Ka.677	116-308	Truck Tipper	Tata 1210B	17	HED Butwal
399	86	Na.A.Ka.512	116-309	Truck Tipper	Tata 1210B	17	HED Butwal
400	87	Ba.1.Ka.2223	116-310	Truck Tipper	Tata 1210B	19	HED Nepalgunj
401	88	Ba.1.Ka.2226	116-311	Truck Tipper	Tata 1210B	19	HED Nepalgunj
402	89	Ba.1.Ka. 1486	116-313	Truck Tipper	Isuzu	20 *	HED Itahari
403	90	Se.1 Ga 43	116-314	Truck Tipper	Ashok Leyland	20 *	MO Birtamord
404	91	Ba.1.Ka. 2225	116-315	Truck Tipper	Tata 1210B	19	MO Budar
405	92	Ba.1.Ka. 2228	116-316	Truck Tipper	Tata 1210B	19	MO Budar
406	93	Se.1.Ga.40	116-317	Truck Tipper	Ashok Leyland	20 *	HED Godavari
407	94	Se.1.Ga.41	116-318	Truck Tipper	Ashok Leyland	20 *	HED Godavari
408	95	Se.1.Ga.42	116-319	Truck Tipper	Ashok Leyland	20 *	HED Godavari
409	1	Ba.1.Ga.1237	117-004	Mini Truck	Mahindra Nissan	14	HED Kathmandu
410	2	Sa.1. Ga 105	117-005	Mini Truck	Mahindra Mahindra	11	MO Lahan
411	3	Ma 1 Ga 12	117-006	Mini Truck	Mahindra Mahindra	11	HED Godavari
412	4	Ra1 Ga 3	117-009	Mini Truck	Mahindra Mahindra	11	MO Dang
413	5	Ba.1.Ga.1481	117-011	Mini Truck	Tata / 407	20 *	HED Kathmandu
414	6	Ba.A.Ka. 2349	117-012	Mini Truck	Mitsubishi Canter	18	HED Butwal
415	7	Ba. A. 2348	117-013	Mini Truck	Mitsubishi Eich Cant	18	HED Nepalgunj
416	8	Ko.1.Ga.63	117-014	Mini Truck	Mahindra Mahindra	14 *	MO Birtamord
417	9	Ba.1Ga1889	117-017	Mini Truck	Tata / 407	12 *	HED Kathmandu
418	10	Ba.1.Ka. 1580	117-018	Mini Truck	Isuzu	20 *	HED Godavari
419	1	Na.1.Da. 1524	118-004	Tractor Trailer	Mitsubishi FV415H	19	HED Hetauda
420	2	Na.1.Da 1527	118-006	Tractor Trailer	Mitsubishi FV415H	19	HED Kathmandu
421	3	Na.1.Da. 1526	118-007	Tractor Trailer	Mitsubishi FV415H	19	HED Itahari
422	4	Lu.1.Ga.74	118-009	Tractor Trailer	Mitsubishi FV515H	9	HED Butwal
423	5	Bhe.1.Ga.65	118-010	Tractor Trailer	Mitsubishi FV515H	9	HED Nepalgunj
424	6	Ko1 Ka278	118-011	Tractor Trailer	Foden 4350	18	HED Godavari
425	7	Na.1.Ga. 446	118-013	Tractor Trailer	Isuzu CXZ817	4	HED Hetauda
426	8	Na.1.Ga.447	118-014	Tractor Trailer	Isuzu CXZ817	4	HED Godavari
427	9	Ja.1.Ga. 236	118-101	Tractor Trailer	Hino HE335	22	MO Pokhara

Sr. No.	Sr. No. by Type of M/C	Regd No.	Dept.No.	M/C Description	Make Model	Age	Office
428	1	Na.A.Ga.241	119-013	Tanker Water	Isuzu TXD 50	29	MO Surkhet
429	2	Ja1 Ga 237	119-021	Tanker Water	Isuzu TXD 50	27	MO Bharatpur
430	3	Ba.1.Ga 638	119-022	Tanker Water	Isuzu TXD 50	27	HED Kathmandu
431	4	Na.1.Ga 242	119-023	Tanker Water	Isuzu TXD 50	27	HED Kathmandu
432	5	Bhe.A.Ga.43	119-027	Tanker Water	Isuzu SBR 372	26	MO Dang
433	6	Ja.1.Ga.228	119-028	Tanker Water	Isuzu HTR	20	HED Hetauda
434	7		119-029	Tanker Water	Isuzu HTR	20	MO Lahan
435	8	Bhe.1.Ga.51	119-030	Tanker Water	Isuzu HTR	20	HED Nepalgunj
436	9	Ba.1.Ga 1129	119-031	Tanker Water	Isuzu HTR	20	HED Kathmandu
437	10	Ba.1.Ga.1157	119-032	Tanker Water	Isuzu HTR	20	HED Kathmandu
438	11	Ba.1.Ga 1162	119-033	Tanker Water	Isuzu HTR	20	HED Kathmandu
439	12	Lu.1.Ga.53	119-034	Tanker Water	Isuzu HTR	20	HED Butwal
440	13	Ga.1.Ga.100	119-035	Tanker Water	Isuzu HTR	20	MO Pokhara
441	14	Se.1.Ga.46	119-036	Tanker Water	AL / Comet	18	HED Kathmandu
442	15	Lu.1.Ga.70	119-037	Tanker Water	Ashok Leyland	10	HED Butwal
443	16	Bhe.1.Ga.63	119-038	Tanker Water	Ashok Leyland	10	HED Nepalgunj
444	17	Se.1.Ga.54	119-039	Tanker Water	Ashok Leyland	10	HED Godavari
445	18	60-0-168	119-040	Tanker Water	Tata 1210SE/48	18	MO Janakpur
446	19	Ko1 Ga.80	119-041	Tanker Water	Tata 1210SE/48	18	HED Itahari
447	20	Ko.1.Ga.68	119-042	Tanker Water	Tata 1210SE/48	17	MO Birtamord
448	1	Lu1 Da 52	123-020	Agricultural Tractor	Ford 3610	13	MO Bharatpur
449	2	Ba.A.Da. 54	123 021	Agricultural Tractor	Ford 3610	13	HED Butwal
450	3	Ba.1Da 51	123-022	Agricultural Tractor	Ford 3610	13	MO Lahan
451	4	Bhe.1.Da.32	123-023	Agricultural Tractor	Ford 3610	13	HED Nepalgunj
452	5	Ba1Da 53	123-024	Agricultural Tractor	Ford 3610	13	MO Pokhara
453	6	Ba.A.Da. 55	123-025	Agricultural Tractor	Mahindra 575	12	HED Butwal
454	7	Ba.1.Da. 58	123-026	Agricultural Tractor	Mahindra 575	12	HED Nepalgunj
455	8	Ba.A.Da 57	123-027	Agricultural Tractor	Mahindra 575	12	MO Dang
456	9	Ba.A.Da. 56	123-028	Agricultural Tractor	Mahindra 575	12	HED Butwal
457	10	Sa.1Da 14	123-029	Agricultural Tractor	Escort E355N	11	MO Lahan
458	11	Ja.1 Da 86	123-030	Agricultural Tractor	Escort E355N	11	MO Janakpur
459	12	Ja.1 Da 95	123-031	Agricultural Tractor	Escort E355N	11	MO Janakpur
460	13	Na1 Da143	123-032	Agricultural Tractor	Escort E355N	11	MO Bharatpur
461	14		123-036	Agricultural Tractor	Escort E355N	11	MO Pokhara
462	15	Ra.1.Da.1	123-039	Agricultural Tractor	Escort E355N	11	MO Dang
463	16	Ga.1.Da.219	123-040	Agricultural Tractor	Hindustan G453DI	10	MO Pokhara
464	17	Ga.1.Da.220	123-041	Agricultural Tractor	Hindustan G453DI	10	MO Pokhara
465	18		123-044	Agricultural Tractor	Hindustan G453DI	9	HED Kathmandu
466	19		123-046	Agricultural Tractor	Hindustan G453DI	9	HED Kathmandu
467	20	Lu.1.Da.48	123-052	Agricultural Tractor	HMT 4511	8	HED Kathmandu
468	21	Lu.1.Da.46	123-053	Agricultural Tractor	HMT 4511	8	HED Butwal
469	22	Lu.1.Da.45	123-054	Agricultural Tractor	HMT 4511	8	HED Butwal
470	23	Lu.1.Da.55	123-056	Agricultural Tractor	HMT 4511	8	HED Kathmandu

Sr. No.	Sr. No. by Type of M/C	Regd No.	Dept.No.	M/C Description	Make Model	Age	Office
471	24	Lu.1.Da.56	123-057	Agricultural Tractor	HMT 4511	8	HED Kathmandu
472	25	Me.1 Da 12	123-058	Agricultural Tractor	M & M	8	MO Birtamord
473	26	Bhe.1.Da.41	123-062	Agricultural Tractor	MF245	6	HED Nepalgunj
474	27	Bhe.1.Da.35	123-064	Agricultural Tractor	Sonalika	5	MO Dang
475	28	Lu.1.Da.62	123-065	Agricultural Tractor	Sonalika	5	HED Butwal
476	29	Bhe.1.Da.37	123-066	Agricultural Tractor	Sonalika	5	MO Dang
477	30	Bhe.1da 36	123-067	Agricultural Tractor	Sonalika	5	MO Surkhet
478	31	Lu 1 Da 59	123-068	Agricultural Tractor	HMT4511	5	HED Godavari
479	32	Lu 1 Da 61	123-069	Agricultural Tractor	HMT4511	5	HED Godavari
480	33	Lu1 Da 60	123-070	Agricultural Tractor	HMT4511	5	MO Bharatpur
481	34	Lu.1.Da.64	123-071	Agricultural Tractor	HMT4511	5	HED Butwal
482	1		138-033	Plate Compactor	Mikasa	20	MO Pokhara
483	2		138-034	Plate Compactor	Mikasa	20	MO Pokhara
484	3		138-035	Plate Compactor	Mikasa	20	MO Kathmandu
485	4		138-037	Plate Compactor	Mikasa	20	MO Kathmandu
486	1	Ra. A. Ga 1	147-004	Mobile Workshop	Tata	19	MO Dang
	Note: * denotes Estimated Age						

## ANNEX-1B

## List of Active Equipment (Different Projects)

Sr. No.	Sr. No. by Type of M/C	Regd No.	Dept.No.	M/C Description	Make Model
<b>Baitadi-Darchula Project</b>					
1	1		070-008	Backhoe Loader	JCB 3CX
2	1		031-030	Dozer Track	Cat D7F
<b>Banepa-Sindhuli-Bardibas Project</b>					
1	1	Ja.1.Ga. 297		Truck Tipper	
2	2	Ja.1.Ga. 298		Truck Tipper	
3	3	Ja.1.Ga. 303		Truck Tipper	
4	4	Ja.1.Ga. 304		Truck Tipper	
5	5	Ja.1.Ga. 305		Truck Tipper	
6	1	Ja.1.Ga. 295		Truck Crane Mounted	
7	2	Ja.1.Ga.302		Truck Crane Mounted	
8	1			Dozer Track	
9	1			Excavator	
10	2			Excavator	
11	1			Loader Wheel	
12	2			Loader Wheel	
13	3			Loader Wheel	
14	1			Grader Motor	
15	2			Grader Motor	
16	1			Roller Vib. Self	3 Ton
17	2			Roller Vib. Self	3 Ton
18	1			Genenrator	50/60
19	2			Genenrator	50/60
20	3			Genenrator	300 Amp
21	1			Soil Seeder	
22	1			Plate compactor	90 Kg
23	2			Plate compactor	90 Kg
24	3			Plate compactor	90 Kg
25	1			Tanker Water	5500 ltr.
26	1			Tractor Trailer	
<b>Surkhet Jumla Road Project</b>					
1	1			Tractor	
2	2			Tractor	
<b>Mechanical Training Centre</b>					

<b>Sr. No.</b>	<b>Sr. No. by Type of M/C</b>	<b>Regd No.</b>	<b>Dept.No.</b>	<b>M/C Description</b>	<b>Make Model</b>
1	1		031-046	Dozer Track	Komatsu D50A-17
2	1		042-011	Excavator	JCB 820S
3	1		055-052	Grader Motor	Champion 710
4	2		055-106	Grader Motor	Komatsu GD300A-I
5	1		068-059	Loader Wheel	Furukawa FL200-I
6	2		068-079	Loader Wheel	Cat 920
7	1		070-010	Loader Backhoe	JCB 3CX-4
8	1		116-178	Truck Tipper	Isuzu SBR



## ANNEX-2 A

**Budget and Expenditure FY 2064/65**  
**Budget Heading 48-3-150**

Sr.No.	Office	Budget Amount	Total Expenditure	Remarks
1	HED Itahari	10734500	10110103.99	
2	HED Hetauda	14338100	13302205.29	
4	HED Kathmandu	15965000	15322178.93	
3	HED Butwal	11296700	10419869.11	
5	HED Nepalgunj	8330700	7493211.80	
6	HED Godavari	8554400	7639908.85	
1	MO Birtamod	4154400	4148361.26	
2	MO Lhan	4621400	4351320.30	
3	MO Janakpur	4539900	3837459.39	
4	MO Bharatpur	3520300	2817334.30	
5	MO Kathmandu	5852900	5287512.88	
6	MO Pokhara	4694100	4024917.10	
7	MO Dang	3395000	3039330.53	
8	MO Surkhet	2994300	2460073.49	
9	MO Budar	2940700	2497905.10	
	Unallocated	3965600	0	
	<b>Total</b>	<b>109898000</b>	<b>96751692.32</b>	

## ANNEX-2 B

**Budget and Expenditure FY 2064/65**  
**Budget Heading 48-4-670**

(Rs. in Thousand)

Sr. No.	Office	Work Activities	Budget Amount (Rs.)	Total Expenditure (Rs.)	Remarks Percentage%
---------	--------	-----------------	---------------------	-------------------------	---------------------

**Mechanical Branch**

1	Mechanical Branch	Spare Parts Procurement	4100	3759.091	
		HEDs & MOs inspection visits	150	75.104	
		Logistics Expenses for Auction	250	8.136	
		Sub-Total	4500	3842.331	85.39

**Heavy Equipment Divisions**

1	HED Itahari	Heavy Equipment Maintenance & Operation 444 Hrs	200	190	
		Medium Equipment Maintenance & Operation 4000 Hrs	700	665	
		Light Vehicle Maintenance & Operation 6000 Km	300	285	
		Low Bed Trailer & Truck Maintenance & Operation (HeavyEqpt.Transportation) 889 Hrs	200	190	
		Administrative Expenditure		70	As Contingency
		Sub-Total	1400	1400	100
2	HED Hetauda	Heavy Equipment Maintenance & Operation 1111 Hrs	200	199.988	
		Medium Equipment Maintenance & Operation 4800 Hrs	800	799.989	
		Light Vehicle Maintenance & Operation 42000 Km	600	599.969	
		Low Bed Trailer & Truck Maintenance & Operation (HeavyEqpt.Transportation) 444 Hrs	100	99.964	
		Sub-Total	1700	1699.91	99.99
3	HED Kathmandu	Heavy Equipment Maintenance & Operation 444 Hrs	200	200	
		Medium Equipment Maintenance & Operation 4571 Hrs	800	800	
		Light Vehicle Maintenance & Operation 28000 Km	1400	1399.977	
		Low Bed Trailer & Truck Maintenance & Operation (HeavyEqpt.Transportation) 444 Hrs	100	100	
		Sub-Total	2500	2499.977	100
4	HED Butwal	Heavy Equipment Maintenance & Operation 1556 Hrs	200	200	
		Medium Equipment Maintenance & Operation 3286 Hrs	800	800	
		Light Vehicle Maintenance & Operation 40000 Km	600	600	
		Low Bed Trailer & Truck Maintenance & Operation (HeavyEqpt.Transportation) 333 Hrs	100	100	
		Back Log Job Costing Data Entry			
		Sub-Total	1700	1700	100

(Rs. in Thousand)

Sr. No.	Office	Work Activities	Budget Amount	Total Expenditure	Remarks
			(Rs.)	(Rs.)	Percentage%
5	HED Nepalgunj	Heavy Equipment Maintenance & Operation 444 Hrs	200	200	
		Medium Equipment Maintenance & Operation 3143 Hrs	550	550	
		Light Vehicle Maintenance & Operation 50000 Km	250	250	
		Low Bed Trailer & Truck Maintenance & Operation (HeavyEqpt.Transportation) 889 Hrs	200	200	
		Sub-Total	1200	1200	100
6	HED Godavari	Heavy Equipment Maintenance & Operation 444 Hrs	200	200	
		Medium Equipment Maintenance & Operation 2857 Hrs	500	500	
		Light Vehicle Maintenance & Operation 60000 Km	300	300	
		Low Bed Trailer & Truck Maintenance & Operation (HeavyEqpt.Transportation) 889 Hrs	200	200	
		Sub-Total	1200	1200	100
<b>Sub-Total of HEDs</b>			<b>9700</b>	<b>9699.887</b>	

**Mechanical Offices**

1	MO Birtamod	Heavy Equipment Maintenance & Operation 111 Hrs	50	50	
		Medium Equipment Maintenance & Operation 857 Hrs	150	150	
		Light Vehicle Maintenance & Operation 10000 Km	50	50	
		Sub-Total	250	250	100
2	MO Lahan	Heavy Equipment Maintenance & Operation 111 Hrs	50	50	
		Medium Equipment Maintenance & Operation 857 Hrs	150	150	
		Light Vehicle Maintenance & Operation 10000 Km	50	50	
		Sub-Total	250	250	100
3	MO Janakpur	Heavy Equipment Maintenance & Operation 111 Hrs	50	50	
		Medium Equipment Maintenance & Operation 857 Hrs	150	150	
		Light Vehicle Maintenance & Operation 10000 Km	50	50	
		Sub-Total	250	250	100
4	MO Bharatpur	Heavy Equipment Maintenance & Operation 222 Hrs	100	100	
		Medium Equipment Maintenance & Operation 1714 Hrs	300	299.991	
		Light Vehicle Maintenance & Operation 30000 Km	150	150	
		Sub-Total	550	549.991	100
5	MO Kathmandu	Heavy Equipment Maintenance & Operation 111 Hrs	50	50	
		Medium Equipment Maintenance & Operation 857 Hrs	150	149.899	
		Light Vehicle Maintenance & Operation 10000 Km	50	50	
		Sub-Total	250	249.899	99.96

(Rs. in Thousand)

Sr. No.	Office	Work Activities	Budget Amount	Total Expenditure	Remarks
			(Rs.)	(Rs.)	Percentage%
6	MO Pokhara	Heavy Equipment Maintenance & Operation 111 Hrs	50	50	
		Medium Equipment Maintenance & Operation 1429 Hrs	250	250	
		Light Vehicle Maintenance & Operation 20000 Km	100	100	
		Sub-Total	400	400	100
7	MO Dang	Heavy Equipment Maintenance & Operation 389 Hrs	50	50	
		Medium Equipment Maintenance & Operation 800 Hrs	225	224.928	
		Light Vehicle Maintenance & Operation 7000 Km	75	75	
		Sub-Total	350	349.928	99.98
8	MO Surkhet	Heavy Equipment Maintenance & Operation 144 Hrs	50	49.97	
		Medium Equipment Maintenance & Operation 571 Hrs	150	149.999	
		Light Vehicle Maintenance & Operation 7000 Km	50	50	99.99
		Sub-Total	250	249.969	
9	MO Budar	Heavy Equipment Maintenance & Operation 111 Hrs	50	50	
		Medium Equipment Maintenance & Operation 857 Hrs	150	149.818	
		Light Vehicle Maintenance & Operation 10000 Km	50	50	99.93
		Sub-Total	250	249.818	
Sub-Total of MOs			2800	2799.605	Progress %
Total of MB, HEDs & MOs			17000	16341.823	96.13

## ANNEX-2C

**Budget and Expenditure FY 2064/65**  
**Budget Heading 48-4-555**

(Rs. in Thousand)

Sr. No.	Office	Work Activities	Budget Amount (Rs.)	Total Expenditure (Rs.)	Remarks Percentage %
1	Mechanical Branch	Spare parts and tyre tube purchase, Duty and other taxes payment	1450	1361.384	
		EPABX tel sys repair & maintenance	50	0	
		Sub-Total	1500	1361.384	90.76

**Heavy Equipment Divisions**

1	HED Itahari	SMD Equipment Maintenance	60	57	
		Light Vehicle Repair & Maintenance	340	323	
		Tire Tube Procurement & Resoling.	200	190	
		Workshop Repair and Works Improvement	400	380	
		Administrative Expenditure		50	
		Sub-Total	1000	1000	100
2	HED Hetauda	SMD Equipment Maintenance	30	30	
		Light Vehicle Repair & Maintenance	170	169.998	
		Tire Tube Procurement & Resoling.	200	200	
		Sub-Total	400	399.998	100
3	HED Kathmandu	SMD Equipment Maintenance	120	120	
		Light Vehicle Repair & Maintenance	180	1279.727	
		Tire Tube Procurement & Resoling.	200	200	
		Sub-Total	1600	1599.727	99.98
4	HED Butwal	SMD Equipment Maintenance	90	90	
		Light Vehicle Repair & Maintenance	510	510	
		Tire Tube Procurement & Resoling.	200	200	
		Sub-Total	800	800	100
5	HED Nepalgunj	SMD Equipment Maintenance	30	30	
		Light Vehicle Repair & Maintenance	170	170	
		Tire Tube Procurement & Resoling.	200	200	
		Sub-Total	400	400	100
6	HED Godawari	SMD Equipment Maintenance	30	30	
		Light Vehicle Repair & Maintenance	170	170	
		Tire Tube Procurement & Resoling.	200	200	
		Sub-Total	400	400	100
<b>Total of HEDs</b>			<b>4600</b>	<b>4599.725</b>	

(Rs. in Thousand)

Sr. No.	Office	Work Activities	Budget Amount	Total Expenditure	Remarks
<b>Mechanical Offices</b>					
1	MO Birtamod	SMD Equipment & Med Eqp Maintenance	60	60	
		Light Vehicle Repair & Maintenance	340	340	
		Tire Tube Procurement & Resoling.	100	100	
		Sub-Total	500	500	
2	MO Lahan	SMD Equipment Maintenance	30	30	
		Light Vehicle Repair & Maintenance	170	170	
		Tire Tube Procurement & Resoling.	100	100	
		Sub-Total	300	300	
3	MO Janakpur	SMD Equipment Maintenance	100	100	
		Light Vehicle Repair & Maintenance	100	100	
		Tire Tube Procurement & Resoling.	100	100	
		Sub-Total	300	300	
4	MO Bharatpur	SMD Equipment Maintenance	30	30	
		Light Vehicle Repair & Maintenance	70	70	
		Tire Tube Procurement & Resoling.	100	99.997	
		Sub-Total	200	199.997	
5	MO Kathmandu	SMD Equipment Maintenance	200	199.637	
		Light Vehicle Repair & Maintenance	100	100	
		Tire Tube Procurement & Resoling.	100	100	
		Sub-Total	400	399.637	
6	MO Pokhara	SMD Equipment Maintenance	60	60	
		Light Vehicle Repair & Maintenance	340	340	
		Tire Tube Procurement & Resoling.	100	100	
		Sub-Total	500	500	
7	MO Dang	SMD Equipment Maintenance	60	60	
		Light Vehicle Repair & Maintenance	340	339.943	
		Tire Tube Procurement & Resoling.	100	100	
		Sub-Total	500	499.943	
8	MO Surkhet	SMD Equipment Maintenance	30	30	
		Light Vehicle Repair & Maintenance	170	169.768	
		Tire Tube Procurement & Resoling.	100	100	
		Workshop Repair and Works Improvement	600	600	
		Sub-Total	900	899.768	
9	MO Budar	SMD Equipment Maintenance	30	30	
		Light Vehicle Repair & Maintenance	170	169.914	
		Tire Tube Procurement & Resoling.	100	100	
		Sub-Total	300	299.914	
<b>Sub Total of MOs</b>			<b>3900</b>	<b>3899.259</b>	<b>Percentage %</b>
<b>Total of MB, HEDs &amp; MOs</b>			<b>10000</b>	<b>9860.368</b>	<b>98.60</b>

## ANNEX-2D

**Budget and Expenditure FY 2064/65**  
**Budget Heading 48-4-695 (Road Board)**

Sr. No.	Office	Work Activities	Budget Amount	Total Expenditure
			(Rs.)	(Rs.)
1	HED Itahari	Equipment maintenance for rainy season	1400000.00	1400000.00
2	HED Hetauda	Equipment maintenance for rainy season	1600000.00	1600000.00
4	HED Kathmandu	Equipment maintenance for rainy season	1400000.00	1400000.00
3	HED Butwal	Equipment maintenance for rainy season	1500000.00	1500000.00
5	HED Nepalgunj	Equipment maintenance for rainy season	1000000.00	1000000.00
6	HED Godavari	Equipment maintenance for rainy season	1000000.00	1000000.00
7	MO Birtamod	Equipment maintenance for rainy season	200000.00	200000.00
8	MO Lahan	Equipment maintenance for rainy season	200000.00	200000.00
9	MO Janakpur	Equipment maintenance for rainy season	200000.00	200000.00
10	MO Bharatpur	Equipment maintenance for rainy season	50000.00	50000.00
11	MO Kathmandu	Equipment maintenance for rainy season	200000.00	199544.63
12	MO Pokhara	Equipment maintenance for rainy season	600000.00	600000.00
13	MO Dang	Equipment maintenance for rainy season	350000.00	350000.00
14	MO Surkhet	Equipment maintenance for rainy season	200000.00	200000.00
15	MO Budar	Equipment maintenance for rainy season	100000.00	100000.00
		<b>Total</b>	<b>10000000.00</b>	<b>9999544.63</b>

## ANNEX-2E

**Budget and Expenditure FY 2064/65  
Revolving Fund**
(Rs. in  
Thousand)

Sr. No.	Office	Work Activities	Budget Amount	Total Expenditure	Remarks
			(Rs.)	(Rs.)	Progress %
<b>Mechanical Branch</b>					
1	MB	Spare Parts Procurement	8000	5121.149	
		Sub-Total	8000	5121.149	64.01
<b>Heavy Equipment Divisions</b>					
1	HED Itahari	Rehabilitation- Medium Equipment Repair-1unit	90.685	90.684	
		Heavy Equipment Maintenance & Operation 622 Hrs (Excluding fuel)	350	350.000	
		Medium Equipment Maintenance & Operation 857 Hrs (Excluding fuel)	160	160.000	
		Administrative Expenditure	31.615	31.615	
		Sub-Total	632.3	632.299	100.00
2	HED Hetauda	Rehabilitation- Machine Equipment Repair	456.617	456.612	
		Heavy Equipment Maintenance & Operation 116 Hrs (Excluding fuel)	228.79	228.774	
		Medium Equipment Maintenance & Operation 882 Hrs (Excluding fuel)	227.828	227.785	
		Administrative Expenditure	48.065	48.051	
		Sub-Total	961.3	961.222	99.99
3	HED Butwal	Rehabilitation-1)Cat Track Dozer RD#031-059 2) Cat950Wheelloader RD#068-076	670	658.070	
		Running Maintenance-Heavy Equipment Repair & Maintenance 778 Hrs	350	327.020	
		Medium Equipment Repair & Maintenance 1071 Hrs	310	289.360	
		Administrative Expenditure	70	50.979	
		Sub-Total	1400	1325.429	94.67
4	HED Kathmandu	Rehabilitation 1 unit of Loader & 2 units of Roller	600	600.000	
		Repair & Maintenance-Heavy Equipment 223 Hrs	196	196.000	
		Repair & Maintenance Medium Equipment 745 Hrs	422	422.000	
		Administrative Expenditure	64	47.425	
		Sub-Total	1282	1265.425	98.71
5	HED Nepalgunj	Rehabilitation- Machine Equipment Repair	318.11	318.110	
		Repair & Maintenance- Heavy Equipment 706 Hrs	318.11	318.110	
		Administrative Expenditure	33.48	33.329	
		Sub-Total	669.7	669.549	99.98
6	HED Godavari	Rehabilitation Repair-RD#031-058	107	107.000	
		Rehabilitation Repair- Tipper Trucks	190	190.000	
		Administrative Expenditure	9	9.000	
		Sub-Total	306	306.000	100.00



(Rs. in  
Thousand)

Sr. No.	Office	Work Activities	Budget Amount	Total Expenditure	Remarks
<b>Sub-Total of all HEDs</b>			<b>5251.3</b>	<b>5159.924</b>	
<b>Mechanical Offices</b>					
1	MO Birtamod	Medium Equipment Maintenance & Operation 860 Hrs	140.6	140.600	
		Administrative Expenditure	7.4	7.399	
		Sub-Total	148	147.999	100.00
2	MO Lahan	Medium Equipment Maintenance & Operation Hrs	23.94	23.940	
		Administrative Expenditure	1.26	1.260	
		Sub-Total	25.2	25.200	100.00
3	MO Janakpur	Medium Equipment Maintenance & Operation Hrs	48.21	0.000	
		Administrative Expenditure	2.54	0.000	
		Sub-Total	50.75	0.000	0.00
4	MO Bharatpur	Medium Equipment Maintenance & Operation Hrs	63.18	63.180	
		Administrative Expenditure	3.32	3.320	
		Sub-Total	66.5	66.500	
5	MO Kathmandu	Medium Equipment Maintenance & Operation 100 Hrs	62.7	62.032	
		Administrative Expenditure	3.3	2.949	
		Sub-Total	66	64.981	98.46
6	MO Pokhara	Rehabilitation- Equipment Repair 1 unit	222	222.000	
		Maintenance- Medium Equipment 135 Hrs	63.43	63.430	
		Administrative Expenditure	15	15.000	
		Sub-Total	300.43	300.430	100.00
7	MO Dang	Heavy Equipment Maintenance & Operation 114 Hs	114	114.000	
		Maintenance- Medium Equipment 288 Hrs	50.35	50.350	
		Administrative Expenditure	8.65	8.650	
		Sub-Total	173	173.000	100.00
8	MO Surkhet	Heavy Equipment Maintenance & Operation 147Hrs	125.4	124.563	
		Administrative Expenditure	6.6	5.433	
		Sub-Total	132	129.995	98.48
9	MO Budar	Heavy Equipment Maintenance & Operation Hrs			
		Administrative Expenditure			
		Sub-Total	0	0.000	
<b>Sub-Total of all MOs</b>			<b>961.88</b>	<b>908.105</b>	
<b>TOTAL of MB, HED's &amp; MO's</b>			<b>14213.180</b>	<b>11189.178</b>	<b>78.72</b>

## ANNEX-2F

## Summary of Budget and Expenditure for Repair and Maintenance FY 2064/65

(Rs. In Thousand)

Office	48-3-150		48-4-670		48-4-555		48-4-695		Revolving Fund		Total	
	Budget	Expenditure	Budget	Expenditure	Budget	Expenditure	Budget	Expenditure	Budget	Expenditure	Budget	Expenditure
Mechanical Branch			4500.0	3842.3	1500.0	1361.4			8000.0	5121.1	14000.0	10324.9
HED Itahari	510	510.0	1400.0	1400.0	1000.0	1000.0	1400.0	1400.0	632.3	632.3	4942.3	4942.3
HED Hetauda	510	509.9	1700.0	1699.9	400.0	400.0	1600.0	1600.0	961.3	961.2	5171.3	5171.0
HED Kathmandu	600	600.0	2500.0	2500.0	1600.0	1599.7	1400.0	1400.0	1282.0	1265.4	7382.0	7365.1
HED Butwal	510	510.0	1700.0	1700.0	800.0	800.0	1500.0	1500.0	1400.0	1325.4	5910.0	5835.4
HED Nepalgunj	510	510.0	1200.0	1200.0	400.0	400.0	1000.0	1000.0	669.7	669.5	3779.7	3779.5
HED Godavari	500	500.0	1200.0	1200.0	400.0	400.0	1000.0	1000.0	306.0	306.0	3406.0	3406.0
MO Birtamod	240	240.0	250.0	250.0	500.0	500.0	200.0	200.0	148.0	148.0	1338.0	1338.0
MO Lahan	240	240.0	250.0	250.0	300.0	300.0	200.0	200.0	25.2	25.2	1015.2	1015.2
MO Janakpur	240	240.0	250.0	250.0	300.0	300.0	200.0	200.0	50.8	0.0	1040.8	990.0
MO Bharatpur	240	240.0	550.0	550.0	200.0	200.0	50.0	50.0	66.5	66.5	1106.5	1106.5
MO Kathmandu	240	236.4	250.0	249.9	400.0	399.6	200.0	199.5	66.0	65.0	1156.0	1150.4
MO Pokhara	240	240.0	400.0	400.0	500.0	500.0	600.0	600.0	300.4	300.4	2040.4	2040.4
MO Dang	240	239.8	350.0	349.9	500.0	499.9	350.0	350.0	173.0	173.0	1613.0	1612.7
MO Surkhet	240	240.0	250.0	250.0	900.0	899.8	200.0	200.0	132.0	130.0	1722.0	1719.7
MO Budar	240	240.0	250.0	249.8	300.0	299.9	100.0	100.0		0.0	890.0	889.7
<b>Total</b>	<b>5300.0</b>	<b>5296.1</b>	<b>17000.0</b>	<b>16341.8</b>	<b>10000.0</b>	<b>9860.4</b>	<b>10000.0</b>	<b>9999.5</b>	<b>14213.2</b>	<b>11189.2</b>	<b>56513.2</b>	<b>52687.0</b>

## Annex-3

## Spare Parts Procurement by Mechanical Branch in FY 2064/65

Sr. No.	LC No:	Procured for: Office	Make	Equipment	Budget Head	LC Opened on:	Total Items	FC Unit	CIF	Exchange Rate	LC Amount in NRs.	Status
1	OS 4071/64	MO Lahan, MO Dang	Furukawa	Wheel Loader (FL230-I)	KS	03.02.2008	41	JPY	947,895	0.583	585,000	LC closed
2	OS 4081/64	MTC Patandhoka	Komatsu	Track Dozer (D50A-17)	KS	25.02.2008	18	US \$	2,810.68	63.95	195,000	LC closed
3	OS 4136/64	HED KTM, HED Itahari	Caterpillar	Track Dozer (D3B; D7G)	KS	05.05.2008	36	US \$	15,865.29	64.70	1,077,000	LC estblished
4	OS 4138/64	HED Butwal	Stavostroj	Pneumatic Roller (VP 200)	KS	05.05.2008	22	EUR	5,631.60	101.12	600,000	10% released
5	OS 4147/64	HED Butwal	Etnyre	Bitumen Distributor	KS	03.06.2008	37	US \$	7,145.78	68.55	515,000	Goods received
6	OS 4179/64	HED KTM	Hitachi	Excavator (EX200-3)	KS	07.07.2008	2	US \$	9,685.71	69.50	725,000	LC estblished
7	OS 4153/64	For Tender	Kawasaki	Wheel Loader (70-ZIV)	KS	15.06.2008	17	JPY	876580.00	0.653	600,000	LC estblished
									<b>Sub-Total</b>		<b>4,297,000</b>	
8	OS 4059/64	HED Hetauda	Kawasaki	Wheel Loader (70 ZIV)	48-4-670	18.11.2007	18	JPY	481,000	0.578	300,000	LC closed
9	OS 4061/64	HED Hetauda, HED N'Gunj	Komatsu	Grader (GD405-1); Excavator (PC150-5)	48-4-670	05.12.2007	42	US \$	12,841.01	63.85	865,000	10% released
10	OS 4073/64	HED KTM	Bomag	Vib. Roller (BW71E; BW172D-2)	48-4-670	13.02.2008	52	EUR	10,137.54	94.97	1,010,000	LC closed
11	OS 4082/64	MTC Patandhoka	Furukawa	Wheel Loader (FL200-I)	48-4-670	25.02.2008	12	JPY	423,154	0.597	268,000	LC closed
12	OS 4083/64	HED Itahari, MO Dang	Komatsu	Track Dozer (D50A-17), Wheel Loader (WA100-1)	48-4-670	25.02.2008	33	US \$	5,685.94	63.95	385,000	LC closed
									<b>Sub-Total</b>		<b>2,828,000</b>	
13	OS 4178/64	HED Hetauda	Komatsu	Wheel Loader (WA100-1)	48-4-555	07.07.2008	15	US \$	4,828.70	69.50	370,000	LC estblished
									<b>Sub-Total</b>		<b>370,000</b>	
									<b>Total</b>		<b>7,495,000</b>	

## ANNEX-4

## The Proposed Hire Rate

Equipment Name	Equipment Identification	Capacity/ Category	DoR Code	Proposed Hire Rate	
				Per Hour	Per Shift
				Rs.	Rs.
Asphalt Plant*	Universal Spot Mix : Wylie	Up to 10 Ton	001 -	400.00	2800.00
Asphalt Plant*	Bram Millar	Up to 10 Ton	001 -	500.00	3500.00
Ashalt Paver	Blow Knox BK 165		002 -	1400.00	9800.00
Ashalt Mixer	Bel Mix		003 -	1000.00	7000.00
Broom Road	Towed		009 -	260.00	1820.00
Boring Rig	TONE		011 -	1200.00	8400.00
Air Compressor	Kirloskar , WR 250, SC 0707C,	150 To 275cfm	017 -	250.00	1750.00
Air Compressor	Holman, D250CFM, 175 MK 11		017 -	250.00	1750.00
Air Compressor	Maruma ES3		017 -	250.00	1750.00
Crane Mobile	Tadano TS 100L	5+ To 10 Ton	021 -	3100.00	21700.00
Crane Mobile	Tadano TS 150L	10+ To 15 Ton	021 -	3500.00	24500.00
Cutter Concrete	Weber SM 182R		024 -	250.00	1750.00
Cutter Concrete	Mikasa MCD 218 DX		024 -	250.00	1750.00
Dozer Wheel	Hanomag D66C, D66D	181 To 230 HP	030 -	2100.00	14700.00
Dozer Wheel	CAT 814	181 To 230 HP	030 -	2100.00	14700.00
Dozer Track	Komatsu D85ESS	181 To 230 HP	031 -	3000.00	21000.00
Dozer Track	CAT D7G	181 To 230 HP	031 -	3000.00	21000.00
Dozer Track	Shangdong TY 220	181 To 230 HP	031 -	3000.00	21000.00
Dozer Track	Hanomag D700C, D700D	181 To 230 HP	031 -	2000.00	14000.00
Dozer Track	Komatsu D85	181 To 230 HP	031 -	2000.00	14000.00
Dozer Track	Yishan TY 160	126 To 180 HP	031 -	1800.00	12600.00
Dozer Track	BEML D65E8	126 To 180 HP	031 -	1800.00	12600.00
Dozer Track	CAT D6H	126 To 180 HP	031 -	1800.00	12600.00
Dozer Track	Komatsu D53A-17; D50A	80 To 125 HP	031 -	1800.00	12600.00
Dozer Track	Komatsu D 50A - 17	80 To 125 HP	031 -	1800.00	12600.00
Dozer Track	CAT D3B	0 To 79 HP	031 -	1000.00	7000.00
Bitumin Distributor	Bedford TJ 1090	4 To 6 KL	032 -	1300.00	9100.00
Bitumin Distributor	ETNYRE/4700; ETNTYRE/M4148	4 To 6 KL	032 -	1300.00	9100.00
Bitumin Distributor	Isuzu/Hanta; Hanta/Hino FF173 K	4 To 6 KL	032 -	1300.00	9100.00
Rock Drill(Pneum)			034 -	130.00	910.00
Mini Dumper	Pengyuan FC 15	1 To 4 Cu. M.	035 -	250.00	1750.00
Mini Dumper	Changai FC 1	1 To 4 Cu. M.	035 -	250.00	1750.00
Mini Dumper	Jiangsu F 15	1 To 4 Cu. M.	035 -	250.00	1750.00
Mini Dumper	Stott & Pitt SD 011	1 To 4 Cu. M.	035 -	250.00	1750.00
Mini Dumper	Thawites	> 4 Cu. M.	035 -	550.00	3850.00
Excavator Track	Daewoo Solar 130LC-V	1 To 110 HP	042 -	1200.00	8400.00
Excavator Track	Kobelco SK 115 SR-1E	1 To 110 HP	042 -	1200.00	8400.00
Excavator Track	Daewoo SL 220	111 To 150 HP	042 -	1800.00	12600.00
Excavator Track	Komatsu PC 150-5A	111 To 150 HP	042 -	1800.00	12600.00
Excavator Track	Hitachi EX 200 - 3	111 To 150 HP	042 -	1800.00	12600.00
Excavator Track	JCB - 820 Super; JCB - 820	111 To 150 HP	042 -	1800.00	12600.00
Excavator+ Breaker	Daewoo SL220 With SOOSAN 20	111 To 150 HP	042 -	2100.00	14700.00

Equipment Name	Equipment Identification	Capacity/ Category	DoR Code	Proposed Hire Rate	
				Per Hour	Per Shift
				Rs.	Rs.
Forklift Truck	Mitsubishi	< 2.5 Ton	049 -	400.00	2800.00
Generator*	Kubota ASK-R 350	Up to 10 KVA	054 -	150.00	1050.00
Generator*	Denyo DBF-3Y; DBF 7.5Y	Up to 10 KVA	054 -	150.00	1050.00
Generator*	Robin	Up to 10 KVA	054 -	150.00	1050.00
Generator*	Caterpillar	Up to 10 KVA	054 -	150.00	1050.00
Generator*	Kirloskar RB 33	Up to 10 KVA	054 -	150.00	1050.00
Generator*	Osaka/Seimeitsu SAS - 130Y	10 To 30 KVA	054 -	150.00	1050.00
Generator*	Kirloskar	30+ To 50 KVA	054 -	350.00	2450.00
Grader Motor	Komatsu GD 511R - 1	135 HP	055 -	1600.00	11200.00
Grader Motor	Chapion 710 ; 710R	135 HP	055 -	1600.00	11200.00
Grader Motor	CAT 120G	125 HP	055 -	1600.00	11200.00
Grader Motor	Mitubishi MG 350R	135 HP	055 -	1600.00	11200.00
Grader Motor	BEML BG605 - 6216	145 HP	055 -	1600.00	11200.00
Grader Motor	Aveling Barford ASG 12G; TG 011	135 HP	055 -	1200.00	8400.00
Grader Motor	Niigata N530 PSA	135 HP	055 -	1200.00	8400.00
Grader Motor	Komatsu 405A - 1	90 HP	055 -	1200.00	8400.00
Chips Spreader	Phoenix/Tail Gate Mounted		057 -	300.00	2100.00
Bitumin Heater	Span Eng.	Up to 2 KL	062 -	180.00	1260.00
Loader Wheel	JCB 425	1.75 Cu M	068 -	1000.00	7000.00
Loader Wheel	Aveling Barford	1.75 Cu M	068 -	1000.00	7000.00
Loader Wheel	EJCB - 430	1.7 Cu M	068 -	1000.00	7000.00
Loader Wheel	Komatsu WA 100 - 1	1.2 Cu M	068 -	1000.00	7000.00
Loader Wheel	Komatsu WA 180 - 3	1.8 Cu M	068 -	1200.00	8400.00
Loader Wheel	Furukawa FL 200; FL 230 - I	1.9 - 2.3 Cu M	068 -	1200.00	8400.00
Loader Wheel	Furukawa FL 200 - I	1.9 - 2.3 Cu M	068 -	1200.00	8400.00
Loader Wheel	Kawasaki KSS 70; KLD 70	1.9 - 2.2 Cu M	068 -	1200.00	8400.00
Loader Wheel	CAT 950	> 1.8 Cu M	068 -	1200.00	8400.00
Loader Wheel	Michigan Clark 75 - IIIA	> 1.8 Cu M	068 -	1200.00	8400.00
Loader Wheel	Huandai HL 757 - 7	2.5 Cu M	068 -	1500.00	10500.00
Loader Wheel	Kawasaki 70ZIV - 2	2.2 Cu M	068 -	1500.00	10500.00
Loader Wheel	Kawasaki 70ZIV; WL03 - 70Z	2.2 Cu M	068 -	1500.00	10500.00
Loader Wheel	Kawasaki 70Z - IV Hino	2.2 Cu M	068 -	1500.00	10500.00
Back Hoe Loader	JCB 3CX - 4	< 90 HP	070 -	1000.00	7000.00
Water Pump (Engine)	Sykes Univac	Up To 4"	085 -	150.00	1050.00
Water Pump (Engine)	Yanmar/ YKS - 3DW	Up To 4"	085 -	150.00	1050.00
Water Pump (Engine)	Sykes Univac	4To 6 "	085 -	200.00	1400.00
Water Pump (Engine)	Yanmar/ YKS - 6DFA	4To 6"	085 -	200.00	1400.00
Water Pump (Elect.)		5 HP	085 -	150.00	1050.00
Water Pump (Elect.)		7.5 HP	085 -	150.00	1050.00
Pile Driver*		10 Ton	086 -	3000.00	21000.00
Roller 3 Wheel	Aveling Barford DC 011	Up to 12 Ton	094 -	500.00	3500.00
Roller 3 Wheel	Johns Moller Rambo	Up to 12 Ton	094 -	500.00	3500.00
Roller 3 Wheel	Speedcraft DRR 10 - S	Up to 12 Ton	094 -	500.00	3500.00
Roller 3 Wheel	Luoyang 3Y8 / 10	Up to 12 Ton	094 -	500.00	3500.00
Roller 3 Wheel	Aveling Barford DC 012	Up to 12 Ton	094 -	500.00	3500.00

Equipment Name	Equipment Identification	Capacity/ Category	DoR Code	Proposed Hire Rate	
				Per Hour	Per Shift
				Rs.	Rs.
Roller 3 Wheel	Albaret TR - 10	Up to 12 Ton	094 -	500.00	3500.00
Roller 3 Wheel	Kawasaki KMRH - 12	Up to 12 Ton	094 -	500.00	3500.00
Roller 3 Wheel	Sakai 7608	Up to 12 Ton	094 -	500.00	3500.00
Roller Pneumatic	Dynapac CP 15	Up to 20 Ton	096 -	1200.00	8400.00
Roller Pneumatic	Hamm GRW - 10	Up to 20 Ton	096 -	1200.00	8400.00
Roller Pneumatic	Stavostroj VP 200	Up to 20 Ton	096 -	1200.00	8400.00
Roller Pneumatic	Dynapac CP 20	Up to 20 Ton	096 -	1200.00	8400.00
Roller Pneumatic	Sakai TS7409	Up to 20 Ton	096 -	1000.00	7000.00
Roller Vib. Pedestrian	Bomag BW 71E - 2	Up to 0.5 Ton	098 -	400.00	2800.00
Roller Vib. Pedestrian	Bomag BW 71E	Up to 0.5 Ton	098 -	400.00	2800.00
Roller Vib. Pedestrian	Benford 1 - 71L / 2 - 75B	Up to 0.5 Ton	098 -	300.00	2100.00
Roller Vib. Pedestrian	Holman / Com CS 71	Up to 0.5 Ton	098 -	300.00	2100.00
Roller Vib. Pedestrian	Mortimor CPM/71	Up to 0.5 Ton	098 -	300.00	2100.00
Roller Vib. Pedestrian	Bomag BW 55E	Up to 0.5 Ton	098 -	300.00	2100.00
Roller Vib. Pedestrian	Benford 1 - 71EEP/ 1 - 71 B	Up to 0.5 Ton	098 -	300.00	2100.00
Roller Vib. Pedestrian	Benford	Up to 0.5 Ton	098 -	300.00	2100.00
Roller Vib. Pedestrian	Benford 1 - 71BPL	Up to 0.5 Ton	098 -	300.00	2100.00
Roller Vib. Sheepfoot	Tampo	Up to 10 Ton	099 -	700.00	4900.00
Roller Vib. Self Prop.	Johs Moller VT 13 / VT 21	Up to 3 Ton	101 -	550.00	3850.00
Roller Vib. Self Prop.	Sakai SG 500	3 + Upto 6 Ton	101 -	800.00	5600.00
Roller Vib. Self Prop.	Larsen & Turbo W1104	3 + Upto 6 Ton	101 -	800.00	5600.00
Roller Vib. Self Prop.	Bomag BG 605	3 + Upto 6 Ton	101 -	800.00	5600.00
Roller Vib. Self Prop.	Bomag BW 172D - 2	6.3 Ton	101 -	900.00	6300.00
Roller Vib. Self Prop.	Bomag	6.3 Ton	101 -	900.00	6300.00
Roller Vib. Self Prop.	Kawasaki KVR 7	6 Ton	101 -	700.00	4900.00
Spreader Chip S/P	Phoenix MK 4		109 -	1500.00	10500.00
Spayer Emulsion	Hotta ESC - 10 E	Up to 1 KL	112 -	260.00	1820.00
Truck Flatbed/Crane	Dong Feng/AEDLUS	Up to 7 Ton	114 -	800.00	5600.00
Truck Flatbed/Crane	Tata SE 1210/42	Up to 7 Ton	114 -	800.00	5600.00
Truck Flatbed/Crane	Tata Usha 1210B/42	Up to 7 Ton	114 -	800.00	5600.00
Truck Flatbed/Crane	Isuzu HTR	Up to 7 Ton	114 -	800.00	5600.00
Truck Flatbed	Ashok Leyland CS 42	Up to 150 HP	115 -	450.00	3150.00
Truck Flatbed	Hino FF 173KA	Up to 150 HP	115 -	450.00	3150.00
Truck Flatbed	Isuzu HTR 114-03	Up to 150 HP	115 -	450.00	3150.00
Truck Flatbed	Isuzu TXD 50	Up to 150 HP	115 -	450.00	3150.00
Truck Tipper	Tata SK 1210/36	Up to 150 HP	116 -	450.00	3150.00
Truck Tipper	A/Leyland Commet 3/15;	Up to 150 HP	116 -	450.00	3150.00
Truck Tipper	Tata SE 1210 /36	Up to 150 HP	116 -	450.00	3150.00
Truck Tipper	A/ Leyland Commet 3/21	Up to 150 HP	116 -	450.00	3150.00
Truck Tipper	A/ Leyland Commet	Up to 150 HP	116 -	450.00	3150.00
Truck Tipper	A/Leyland Commet	Up to 150 HP	116 -	450.00	3150.00
Truck Tipper	Isuzu HTR 113-03	Up to 150 HP	116 -	450.00	3150.00
Truck Tipper	Hino KR 120 E	Up to 150 HP	116 -	450.00	3150.00
Truck Tipper	Isuzu SBR 322; TXD 40	Up to 150 HP	116 -	450.00	3150.00
Truck Tipper	Nissan CPC 14E	From 150+ HP	116 -	1100.00	7700.00

Equipment Name	Equipment Identification	Capacity/ Category	DoR Code	Proposed Hire Rate	
				Per Hour	Per Shift
				Rs.	Rs.
Truck Tipper	Isuzu TDJ	From 150+ HP	116 -	1100.00	7700.00
Truck Tipper	Nissan CKB 450EDN	From 150+ HP	116 -	1100.00	7700.00
Mini Truck	Mah & Mah Cab 576		117 -	300.00	2100.00
Mini Truck	Tata 407		117 -	300.00	2100.00
Mini Truck	Mah. Nis. Allw. Cab 576		117 -	300.00	2100.00
Mini Truck	Mits. Can. Eich./ FE444		117 -	300.00	2100.00
Mini Truck	Mitsu. Eicher EE 44EXR		117 -	300.00	2100.00
Trailer Tractor	Isuzu CXZ81Q	10 + to 25 Ton	118 -	2200.00	15400.00
Trailer Tractor	Foden 5106T	10 + to 25 Ton	118 -	2200.00	15400.00
Trailer Tractor	Hino HE 335	10 + to 25 Ton	118 -	2200.00	15400.00
Trailer Tractor	Mitsubishi FV 515 HRR	10 + to 25 Ton	118 -	2200.00	15400.00
Trailer Tractor	Nissan CW - 50 GTN	10 + to 25 Ton	118 -	2200.00	15400.00
Trailer Tractor	Mitsubishi FV 515 HRR	From 25 +Ton	118 -	2700.00	18900.00
Water Tanker	AL/ Commet; ALCO- 3/15	Up to 8 KL	119 -	550.00	3850.00
Water Tanker	Tata/SE 1210/48	Up to 8 KL	119 -	550.00	3850.00
Water Tanker	A/ Leyland Commet CS 42	Up to 8 KL	119 -	550.00	3850.00
Water Tanker	Hino	Up to 8 KL	119 -	550.00	3850.00
Water Tanker	Isuzu HTR	Up to 8 KL	119 -	550.00	3850.00
Water Tanker	Isuzu SBR 312; TXD 50	Up to 8 KL	119 -	550.00	3850.00
Trailer	MAECO / Nepal		122 -	200.00	1400.00
Tractor	HMT 4511	Up to 85 HP	123 -	300.00	2100.00
Tractor	International Sona. DI 745 III	Up to 85 HP	123 -	300.00	2100.00
Tractor	Tractor & Farm MF 245 DI-J	Up to 85 HP	123 -	300.00	2100.00
Tractor	Hindustan G 453 - DI	Up to 85 HP	123 -	300.00	2100.00
Tractor	Escort E 355 N	Up to 85 HP	123 -	300.00	2100.00
Tractor	Mahendra 545	Up to 85 HP	123 -	300.00	2100.00
Tractor	Ford 3610	Up to 85 HP	123 -	300.00	2100.00
Tractor	Kubota	Up to 85 HP	123 -	300.00	2100.00
Tractor	Ford New Holland	Up to 85 HP	123 -	300.00	2100.00
Tractor with trailer	Ford 6610	Up to 85 HP	123 -	440.00	3080.00
Tractor with trailer	Massey Ferguson MF 20B	Up to 85 HP	123 -	440.00	3080.00
Vibrator Engine	Mikasa; Mikasa MV1-GE		136 -	120.00	840.00
Vibrator Needle	BP 25; BP 35		136 -	100.00	700.00
Vibrator Needle	V 635; V 654		136 -	100.00	700.00
Compactor H/Towed	Jaypee	Up to 450 KG	138 -	130.00	910.00
Compactor H/Towed	MIKASA MVC -110D	Up to 450 KG	138 -	130.00	910.00
Welding Arc		30 + KVA	143 -	1150.00	8050.00

\*EXCLUDING COST OF ERECTION/COMMISSIONING/DISMANTLING AND MECHANICAL CREW.

**Note:**

**The recommended hire rate of the above mentioned equipment was approved by the Minister on 2065/05/23**

## ANNEX-5

## Utilization of Equipment between 500 - 1000 hours

Sr. No.	Regd No.	Dept.No.	M/C Description	Make Model	Office	Utilization
1		035-089	Mini Dumper	Jaingsu F15	HED Kathmandu	972
2		042-019	Excavator	Daewoo SL220 LC-V	HED Kathmandu	933
3		035-053	Mini Dumper	Shaanxi F15	MO Kathmandu	911
4		068-042	Loader Wheel	Furukawa FL230I	MO Birtamod	900
5	Na.1.Ga.270	116-184	Truck Tipper	Isuzu SBR322	MO Kathmandu	864
6	Ba.1.Ga.1157	119-032	Tanker Water	Isuzu HTR	HED Kathmandu	850
7		068-104	Loader Wheel	Komatsu WA100I	HED Hetauda	849
8		094-065	Roller 3Wheel	Sakai KD7608D	MO Birtamod	840
9		098-098	Roller Ped.Vib	Bomag BW 71E	HED Kathmandu	834
10		042-012	Excavator	Komatsu PC-150	HED Nepalgunj	823
11	Ba.1.Ga.621	116-215	Truck Tipper	Isuzu SBR322	MO Kathmandu	807
12		035-090	Mini Dumper	Jaingsu F15	HED Kathmandu	792
13		068-062	Loader Wheel	Kawasaki 70ZIV	HED Godavari	763
14		068-086	Loader Wheel	Hyundai HL757-7	HED Butwal	757
15		031-075	Dozer Track	Komatsu D85SESS2A	HED Kathmandu	755
16		042-018	Excavator	Daewoo SL220 LC-V	HED Hetauda	745
17		035-072	Mini Dumper	Jiangsu F15	HED Kathmandu	738
18		035-095	Mini Dumper	Pengyuan FC1.5	HED Kathmandu	734
19	Ba.1.Ga 1162	119-033	Tanker Water	Isuzu HTR	HED Kathmandu	730
20		068-079	Loader Wheel	Kawasaki 70ZIV	HED Butwal	721
21		101-	Roller Vib. Self	Sakai	MO Birtamod	705
22	Ba.1.Ga.1084	114-006	Truck Crane Mounted	Isuzu HTR	MO Kathmandu	704
23		031-055	Dozer Track	BEML D65E8	MO Surkhet	695
24		031-073	Dozer Track	Komatsu D53A	HED Godavari	690
25		098-101	Roller Ped.Vib	Bomag BW71E-2	HED Nepalgunj	689
26		035-044	Mini Dumper	Sambroon TS25M	MO Kathmandu	686
27	PHU 69-01	109-001	Spreader Chip Self Prop.	Phoenix	HED Butwal	678
28		031-062	Dozer Track	Shandong TY220	HED Kathmandu	677
29		042-016	Excavator	Kobelco SK115SR	HED Hetauda	659
30		068-083	Loader Wheel	Hyundai HL757-7	MO Bharatpur	635
31		042-022	Excavator	Daewoo SL220 LC-V	HED Godavari	593
32		042-017	Excavator	Daewoo SL220 LC-V	HED Itahari	589
33		055-045	Grader Motor	Komatsu GD511R	HED Godavari	586
34		055-???	Grader Motor	Champion 710	MO Birtamod	579
35		035-093	Mini Dumper	Chancai FC1	HED Kathmandu	578
36		031-071	Dozer Track	Komatsu D53A	HED Kathmandu	574
37		035-062	Mini Dumper	Shaanxi F15	MO Kathmandu	572
38		035-088	Mini Dumper	Jinhou F15	HED Kathmandu	570
39	Se.1 Ga 43	116-314	Truck Tipper	Ashok Leyland	MO Birtamod	568
40		094-050	Roller 3Wheel	Kawasaki KMRH12	MO Surkhet	558
41		068-043	Loader Wheel	Furukawa FL230I	HED Nepalgunj	557
42	Ko.1.Ga.47	116-265	Truck Tipper	Ashok Leyland ALCO3	HED Itahari	557
43		035-064	Mini Dumper	Jiangsu F15	MO Kathmandu	554



<b>Sr. No.</b>	<b>Regd No.</b>	<b>Dept.No.</b>	<b>M/C Description</b>	<b>Make Model</b>	<b>Office</b>	<b>Utilization</b>
44		094-061	Roller 3Wheel	Kawasaki KMRH12	HED Nepalgunj	550
45		068-085	Loader Wheel	Hyundai HL757-7	HED Kathmandu	539
46		068-082	Loader Wheel	Hyundai HL757-7	HED Birtamod	538
47		068-088	Loader Wheel	Hyundai HL757-7	HED Godavari	525
48	Ko1Ga68	119-042	Tanker Water	Tata 1210SE/48	MO Birtamod	521
49		055-051	Grader Motor	Champion 710	HED Butwal	519
50	Ba.1.Ga.619	116-212	Truck Tipper	Isuzu SBR322	MO Kathmandu	519
51		035-069	Mini Dumper	Jiangsu F15	HED Kathmandu	517
52		035-032	Mini Dumper	Sambron TS25M	MO Kathmandu	514
53		068-063	Loader Wheel	Kawasaki 70ZIV	HED Godavari	503

## Annex-6

## Theoretical Hire on Shift Basis of Fiscal Year 2064/65

Rs.																		
Sr. No.	Office		HED Itahari	HED Hetauda	HED Kathmandu	HED Butwal	HED Nepalgunj	HED Godavari	MO Birtamod	MO Lahan	MO Janakpur	MO Bharatpur	MO Kathmandu	MO Pokhara	MO Dang	MO Surkhet	MO Budar	Total
1	EDRO 1	Illam	6563970						1693180									8257150
2	EDRO 2	Damak	94500						463990									558490
3	EDRO 3	Biratnagar	5741440						51520									5792960
4	EDRO 4	Dhankuta																0
5	EDRO 5	Lahan	3353420	136080						809380								4298880
6	CDRO1	Charikot			5370340													5370340
7	CDRO2	Kathmandu			5819730								5778500					11598230
8	CDRO3	Lalitpur			8169840													8169840
9	CDRO4	Bhaktapur			8421100													8421100
10	CDRO5	Nuwakot			7229180													7229180
11	CDRO6	Bharatpur		4477130	277340													4754470
12	CDRO7	Hetauda		6551720														6551720
13	CDRO8	Janakpur		2412480							3744930							6157410
14	WDRO 1	Damauli		112280										2908570				3020850
15	WDRO 2	Pokhara				241500								2924040				3165540
16	WDRO 3	Papla				3737930								86940				3824870
17	WDRO 4	Butwal				6148240												6148240
18	WDRO 5	Shivapur				4412310												4412310
19	MWDRO 1	Devasthan					1069460											1069460
20	MWDRO 2	Dang		4334960			1857170								3798480			9990610
21	MWDRO 3	Nepalgunj					3096520											3096520
22	MWDRO 4	Surkhet		85680			6878550									5939920		12904150
23	FWDRO 1	Mahendranagar						1239280									138460	1377740
24	FWDRO 2	Dipayal						1540840									70840	1611680
25	FWDRO 3	Baitadi						2658390										2658390
26		Okkaldhunga	1575000						50400									1625400
27		Banepa Sindhuli			1766380													1766380

Rs.

Sr. No.	Office	HED Itahari	HED Hetauda	HED Kathmandu	HED Butwal	HED Nepalgunj	HED Godavari	MO Birtamod	MO Lahan	MO Janakpur	MO Bharatpur	MO Kathmandu	MO Pokhara	MO Dang	MO Surkhet	MO Budar	Total
28	Chhepetar Barpak			4000920	4151910								77280				<b>8230110</b>
29	Shahid Marg					3107790	2385180							1173900			<b>6666870</b>
30	Martadi-Mangalsen						801620										<b>801620</b>
31	Baitadi-Darchula						2942520										<b>2942520</b>
32	Khodpe-Bajhang						4663890									613200	<b>5277090</b>
33	Security Agency		83160			341390									21000		<b>445550</b>
34	Maoist Camp				2548350	2527280	1051960		808150							119140	<b>7054880</b>
35	Miscellaneous				831740		495880										<b>1327620</b>
	<b>Total</b>	<b>17328330</b>	<b>18193490</b>	<b>41054830</b>	<b>22071980</b>	<b>18878160</b>	<b>17779560</b>	<b>2259090</b>	<b>1617530</b>	<b>3744930</b>	<b>5031250</b>	<b>5778500</b>	<b>5996830</b>	<b>4972380</b>	<b>5960920</b>	<b>941640</b>	<b>17160420</b>

## Annex-7

## Income, Expenditure and Operating Profit / Loss of FY 2064/65

150	48-4-670	48-4-555	48-4-695	Revolving Fund	Total Expenditure	Theoretical Hire	Actual Hire Revenue	Gross Income	Profit
	3842331.28	1361384.00		5121148.78	<b>10324864.06</b>				
10110103.99	1400000.00	1000000.00	1400000.00	632299.00	<b>14542402.99</b>	17328330.00	3671934.00	<b>21000264.00</b>	
13302205.29	1699910.02	399998.39	1600000.00	961222.28	<b>17963335.98</b>	18193490.00	4827925.00	<b>23021415.00</b>	
15322178.93	2499976.65	1599726.94	1400000.00	1265424.55	<b>22087307.07</b>	41054830.00	2703640.00	<b>43758470.00</b>	
10419869.11	1700000.00	800000.00	1500000.00	1325429.01	<b>15745298.12</b>	22071980.00	6779287.90	<b>28851267.90</b>	
7493211.80	1200000.00	400000.00	1000000.00	669549.30	<b>10762761.10</b>	18878160.00	4705164.00	<b>23583324.00</b>	
7639908.85	1200000.00	400000.00	1000000.00	306000.00	<b>10545908.85</b>	17779560.00	1593450.00	<b>19373010.00</b>	
4148361.26	250000.00	500000.00	200000.00	147999.39	<b>5246360.65</b>	2259090.00	1750530.00	<b>4009620.00</b>	
4351320.30	250000.00	300000.00	200000.00	25200.00	<b>5126520.30</b>	1617530.00	253390.00	<b>1870920.00</b>	
3837459.39	250000.00	300000.00	200000.00	0.00	<b>4587459.39</b>	3744930.00	580590.00	<b>4325520.00</b>	
2817334.30	549991.00	199997.00	50000.00	66500.00	<b>3683822.30</b>	5031250.00	415000.00	<b>5446250.00</b>	
5287512.88	249898.89	399637.53	199544.63	64981.30	<b>6201575.23</b>	5778500.00	389060.00	<b>6167560.00</b>	
4024917.10	400000.00	500000.00	600000.00	300430.00	<b>5825347.10</b>	5996830.00	1047400.00	<b>7044230.00</b>	
3039330.53	349928.00	499943.00	350000.00	173000.00	<b>4412201.53</b>	4972380.00	546660.00	<b>5519040.00</b>	
2460073.49	249969.20	899767.95	200000.00	129995.23	<b>3939805.87</b>	5960920.00	1447420.00	<b>7408340.00</b>	
2497905.10	249818.00	299914.00	100000.00	0.00	<b>3147637.10</b>	941640.00	301420.00	<b>1243060.00</b>	
<b>96751692.32</b>	<b>16341823.04</b>	<b>9860368.81</b>	<b>9999544.63</b>	<b>11189178.84</b>	<b>144142607.64</b>	<b>171609420.00</b>	<b>31012870.90</b>	<b>202622290.90</b>	
			<b>Incentive</b>		<b>4034425.14</b>				

<b>Total Expenditure</b>	<b>148177032.78</b>
<b>Gross Income</b>	<b>202622290.90</b>
<b>Operating Profit</b>	<b>54445258.12</b>

## Annex-8

## Auction of Equipment and Vehicles in FY 2064/65

S.No	RD No.	Regd. No.	Equipment Description	Make/Model
<b>HED Kathmandu</b>				
1	035-034		Mini Dumper	Sambron
2	035-037		Mini Dumper	Sambron/F1L 210D
3	035-043		Mini Dumper	Sambron/F1L 210D
4	035-030		Mini Dumper	Sambron
5		Ba A Ya 788	Jeep	Land Rover/110
6		Ba A Jh 4276	Jeep	Land Rover/110
7		Ba A Jh 792	Jeep	Land Rover/110
8		Ba A Jh 2026	Jeep	Land Cruiser/BJ40
9		Ba A jh 1468	Pick up	Isuzu/ KBD-40
10		Ba A jh 1542	Pick up	Isuzu
11		Ba A Jh 5651	Jeep	Armada
12		Ba a Jh 2474	Jeep	Mitsubishi Pajero
13			Tractor	Romania
14			Concret Mixture	
15			Hand Vib.Roller	Jollsmoller Hatz
16		Ba 1 Ba 533	Motorcycle	
17		Ba 1 Ba 308	Motorcycle	
18		Ba 1 Ba 2353	Motorcycle	Jialing
19		Ba 1 Ba 1871	Motorcycle	
20			Old Diff.Types of Scraps	
21			Old Tyres Diif sizes	
22			Old Batteries Diff sizes	
<b>HED Butwal</b>				
1		Na 1Jh 376	Toyota pick up	
2		Na A Ka 676	Tata Tipping Truck	
3	PHU 99-01		Bar Cropper	
4	PHU 99-02		Bar Bender	
5	PHU 70-02		Bed Dispenser	
6	098-063		Benford Hand Vib.Roller	
7	098-064		Benford Hand Vib.Roller	
8	096-044		Sakai pneumatic Roller	
9		Na A Ga 292	Tipping Truck	Isuzu
10		Na A Ga 287	Tipping Truck	Isuzu
11	068-028		Wheel Loader	Kawasaki
12			Diamond Rock drill	
13			Diamond Rock drill	
14		Na A Ga 308	Tipping Truck	Isuzu
15	094-030		Road Roller	Sakai
16	094-043		Road Roller	Watanabe
17		Lu 1 Jha 176	Jeep	Land Rover
18		Ba A Ya 793	Jeep	Land Rover
19		Lu 1 Jha 182	Pick up	Mitsubishi
20		Lu 1 Jh 211	Pick up	Mitsubishi
		Lu 1 Jha 373	Pick up	Toyota
		Lu 1 Jh 5141	Pick up	Mitsubishi
			Old Tyres Diif sizes	
			Old Batteries Diff sizes	

<b>S.No</b>	<b>RD No.</b>	<b>Regd. No.</b>	<b>Equipment Description</b>	<b>Make/Model</b>
			Broken Tools Diff Sizes	
			Old Lubricating Oil Diff Types	
			Old Diff.Types of Scraps	