

GOVERNMENT OF NEPAL

MINISTRY OF PHYSICAL PLANNING AND WORKS

DEPARTMENT OF ROADS

MECHANICAL BRANCH

ANNUAL REPORT
(Fiscal Year 2063-64)

TABLE OF CONTENTS

	<u>Page No.</u>
EXECUTIVE SUMMARY	1
CHAPTER 1	2
INTRODUCTION	2
CHAPTER 2	3
OBJECTIVE AND ACTIVITIES	3
2.1 <i>Objective of Mechanical Branch</i>	3
2.2 <i>Activities of Mechanical Branch</i>	3
CHAPTER 3	5
ORGANIZATION STRUCTURE	5
CHAPTER 4	7
RESOURCES	7
4.1 <i>Active Equipment</i>	7
4.2 <i>Supervision Vehicles</i>	9
4.3 <i>Manpower</i>	10
4.4 <i>Budget and Expenditure</i>	10
CHAPTER 5	12
ACCOMPLISHMENTS	12
5.1 <i>Accomplishment of Mechanical Branch at Head Office</i>	12
5.2 <i>Repair and Maintenance of Equipment and Vehicles</i>	13
5.3 <i>Equipment Utilization</i>	14
5.4 <i>Theoretical Hire</i>	15
5.5 <i>Actual Hire Revenue</i>	17
CHAPTER 6	18
OPERATING PROFIT AND LOSS ANALYSIS	18
CHAPTER 7	19
SKILL DEVELOPMENT	19
CHAPTER 8	21
AUCTION	21
CHAPTER 9	22
AUDIT REPORT	22
CHAPTER 10	23
ISSUES	23
10.1 <i>Equipment Policy</i>	23
10.2 <i>Old and Unreliable fleet of equipment</i>	23
10.3 <i>Vehicle Replacement Need</i>	24
10.4 <i>Under Utilization of Equipment</i>	24
10.5 <i>Manpower Planning</i>	24
10.6 <i>Training Need</i>	25
10.7 <i>Relocation and Refurbishment of Workshops</i>	25
10.8 <i>Workshop Tools and Equipment</i>	25
10.9 <i>Equipment Demand by External Agencies</i>	26
CHAPTER 11	27
CONCLUSION	27

List of Appendices

Annex	Description	Page No.
Annex1	List of Active Equipment	30
Annex2	List of Vehicles	42
Annex3	Budget and Expenditure for Fiscal year 2063/64	
Annex-3 A	Budget and Expenditure FY 2063/64 Budget Heading 48-3-150	51
Annex -3 B	Budget and Expenditure FY 2063/64 Budget Heading 48-4-670	52
Annex -3C	Budget and Expenditure FY 2063/64 Budget Heading 48-4-555	55
Annex -3D	Budget and Expenditure FY 2063/64 Budget Heading 48-4-695 (Road Board)	58
Annex -3E	Budget and Expenditure FY 2063/64 Revolving Fund	59
Annex -3F	Summary of Budget and Expenditure for Repair and Maintenance FY 2063/64	61
Annex4	Spare Part Procurement by Mechanical Branch	62
Annex5	Utilization of Equipment in the Fiscal year 2063/64	63
Annex6	Theoretical Hire of Fiscal year 2063/64	65
Annex7	Income and Expenditure of Fiscal Year 2063/64	67
Annex8	List of Auction	68

EXECUTIVE SUMMARY

Department of Roads (DoR) holds a large fleet of construction equipment and supervision vehicles. Mechanical Branch is responsible for their management.

There are 512 units of active equipment in DoR. Average age of the equipment is 15.7 years. There are 140 vehicles currently in use in the department. Out of 140 vehicles, only 77 vehicles are reliable.

In the fiscal year 2063/64, 14 numbers of equipment have been utilized for more than 1000 hours and 51 units have run between 500 - 1000 hours. Total theoretical hire on shift basis amounted to Rs 15,97,00,839. total actual hire revenue collected was Rs 4,11,67,604 and the gross income was Rs 20,08,68,443. Total expenditure was Rs 13,18,00,104 including Rs. 5,35,19,869. for repair and maintenance. Hence, the operating profit was Rs. 6,90,68,339. The audited financial irregularities have reduced considerably. There is no audit objection in 13 offices of HEDs and MOs in the Fiscal Year 2063/64 and also there is no remaining audit irregularities to be settled in MO Pokhara and MO Dang.

There are some issues that need serious attention. The most important being that the equipment holding policy of DOR must be clear so that Mechanical Branch can plan and optimize the fleet holding, prepare equipment replacement plan, plan manpower recruitment and workshop setups depending upon the utilization policy of the equipment by DoR.

The recent equipment status analysis shows that about 45 % of equipment are older than 15 years and need replacement because they have already crossed economic service life. There is a high demand of reliable supervision vehicles. 28 nos. of vehicles, which are older than 15 years and have logged more than 3, Lacs km, need immediate replacement. If equipment and vehicles are not replaced within next few years, it will have detrimental effect in the performance and efficiency of the department.

DoR should also plan to utilize the existing equipment and manpower with some increment in budgetary input in repair, maintenance and operation of equipment so that the output from the scarce resources allocated to DOR can be maximized.

Chapter 1

Introduction

Department of Roads (DoR) holds a large fleet of construction equipment. They are essential to maintain the Strategic Road Network (SRN) and to construct new roads under forced account during crisis management. They are also essential not only to clear slides and to keep the road open during rainy season but also to support the contractors to repair and maintain the roads under SRN.

DoR also holds a large fleet of supervision vehicles. Vehicles are one of the most vital logistic supports necessary for smooth operation of different units and offices of DoR.

Mechanical Branch (MB) is responsible for management of the construction equipment and supervision vehicles owned by DoR.

This annual report 2063/64 is prepared to reflect the resources, activities and accomplishments of Mechanical Branch and offices under it. It also highlights some of the major issues that need attention. This report is based on the annual report of Heavy Equipment Divisions (HEDs), Mechanical Offices (MOs), Mechanical Training Centre (MTC) and other available information at the head office.

Chapter 2

Objective and Activities

2.1 Objective of Mechanical Branch

The primary objective of Mechanical Branch is to manage the construction equipment and supervision vehicles owned by DoR. It mainly includes:

Maintenance management of equipment and vehicles.

- Support operation of construction equipment.
- Fleet Planning.
- Manpower management including skill development.
- Advise policy formulation regarding equipment and vehicle management.

2.2 Activities of Mechanical Branch

2.2.1 Activities of Mechanical Branch at Head Office

Major activities of Mechanical Branch are as follows:

- Monitoring of Heavy Equipment Divisions, Mechanical Offices and Mechanical Training Centre.
- Budgeting and Program formulation.
- Equipment procurement.
- Spare parts procurement from the manufacturer.
- Monitoring of auction of equipment & vehicles.
- Monitoring of Revolving Fund.
- Advise equipment and vehicle allocation.
- Support DOR in policy formulation process.

2.2.2 Activities of Heavy Equipment Divisions and Mechanical Offices

Major activities of HEDs and MOs are as follows:

- Repair and maintain equipment owned by the HEDs/MOs.
- Repair and maintain vehicles owned by the Civil Divisions.
- Avail equipment to the Civil Divisions as per the directions of the Regional Directorate.
- Support and monitor Mechanical Offices (not applicable to MO).
- Support DoR projects.
- Give equipment on hire without affecting the departmental work and administer Revolving Fund from the hire revenue.
- Keep store inventory record of asset owned by the HEDs/MOs.
- Maintain and report necessary records of financial expenditure as per the financial regulation.

- Maintain and report repair, maintenance and operation records of equipments and vehicles as per the directives of the Mechanical Branch.
- Advise Regional Directorate, Division Road Offices and Road Projects related to equipment and vehicles.
- Plan necessary spare parts requirements and send requisition to department for procurement of spare parts from the manufacturer, if necessary.
- Auction economically not repairable, obsolete and scrap asset.

2.2.3 Activities of Mechanical Training Centre

- Develop and provide trainings in operation of the construction equipment to DoR employees.
- Develop and provide trainings in repair and maintenance of the construction equipment to DoR employees.
- Develop and provide modular trainings and custom made trainings to other agencies and individuals and administer Revolving Fund from the training fees.
- Keep store inventory record of asset owned by the MTC.
- Maintain and report necessary records of financial expenditure as per the financial regulation.

Chapter 3

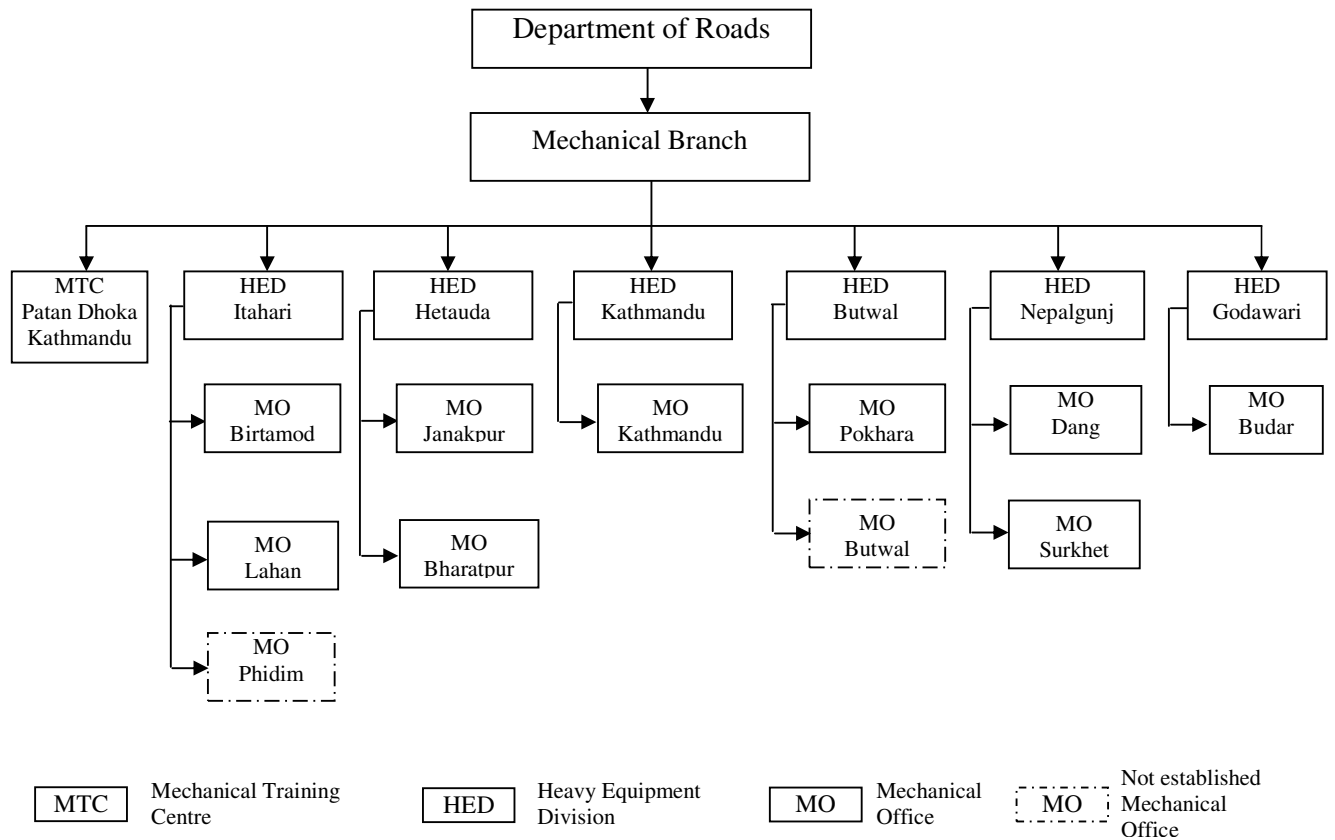
Organization Structure

Organization structure is very important for successful fulfillment of the objectives of any organization. Mechanical branch is headed by Deputy Director General similar to other three branches of DoR. As shown in the organization chart, Mechanical Branch has two sections in the department namely:

1. Equipment Maintenance and Management Section
2. Equipment Procurement and Training Section

There are six Heavy Equipment Divisions under Mechanical Branch. They are base workshops with covered work bays, machine shops, other ancillary electrical, welding and fabrication shops and spare parts stores. These are located in different development regions at Kathmandu, Hetauda, Butwal, Itahari, Nepalgunj and Godawari. Except central region with two HEDs at Kathmandu and Hetauda, there are one HED at each other 4 regions. The HEDs are headed by Senior Divisional Engineer.

Organization Chart



As shown in the organization chart, there are 9 Mechanical Offices with basic first line maintenance and repair facilities. These workshops are located at Birtamod, Lahan,

Janakpur, Bharatpur, Kathmandu, Pokhara, Dang, Surkhet, and Budar. The MOs are headed by Mechanical Engineers. The MO at Butwal and Phidim have not been opened.

There is also a Mechanical Training Centre headed by Senior Divisional Engineer. It is located at Patan in Kathmandu valley.

Chapter 4

Resources

4.1 Active Equipment

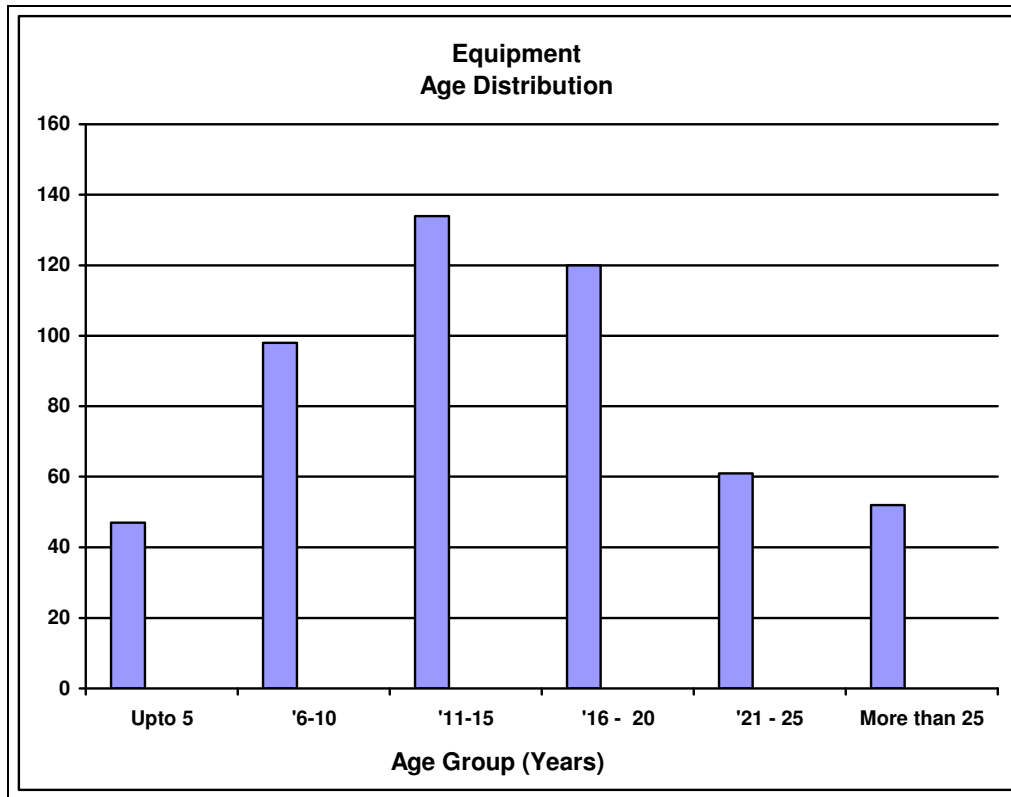
There are 512 units of active equipment in DoR. Summary of different types equipment and their age group is given below in the Table 1. Detailed list of active equipment is given in Annex-1.

Table 1
Summary of Active Equipment

Sr. No.	Departmental Code	Age						Total	Average Age	
		Type of Equipment	Up to 5 yrs	6-10 yrs	11 – 15 yrs	16 - 20 yrs	21 – 25 yrs			More than 25
1	001	Asphalt Plant		1			2	4	7	27.4
2	002	Asphalt Paver			1				1	14.0
3	017	Air Compressor		1	5			1	7	14.7
4	021	Crane Mobile				4		2	6	21.8
5	024	Concrete Cutter		1	1				2	10.5
6	030	Dozer Wheel				6	2	1	9	20.8
7	031	Dozer Track	3	5	7	5	1	2	23	14.0
8	032	Distributor Bitumen		1	5	2	1		9	15.6
9	033	Rock Drill							0	
10	035	Mini Dumper	11	16	10		6	1	44	10.4
11	042	Excavator	8	1	3				12	5.8
12	055	Grader Motor		1	8	10		3	22	17.6
13	062	Bitumen heater				3			3	19.0
14	068	Loader Wheel	9	6	11	10	2	5	43	14.3
15	070	Loader Backhoe		1	2	6			9	16.1
16	086	Pile Driver					1		1	24.0
17	094	Roller 3 Wheel			28	6	10	9	53	19.3
18	096	Roller Pneumatic		9				5	14	16.8
19	098	Roller Ped. Vib	6	18	3				27	7.4
20	101	Roller Vib. Self			9	3			12	13.6
21	109	Spreader Chip Self Prop.				1			1	17.0
22	114	Truck Crane Mounted		2	3	6			11	15.5
23	115	Truck Flatbed				9		2	11	20.5
24	116	Truck Tipper		11	19	29	35	13	107	20.0
25	117	Mini Truck		3	5	3			11	11.9
26	118	Tractor Trailer	2	2	1	4			9	9.0
27	119	Tanker Water		2	3	9	1	4	19	19.1
28	123	Tractor	8	17	10				35	8.3
29	138	Plate compactor				3			3	19.0
30	147	Mobile Workshop				1			1	19.0
Total			47	98	134	120	61	52	512	15.7

It does not include few equipment owned by MTC for training purpose as well as few equipments owned by projects like Banepa-Sindhuli-Bardibas Project. Average age of the equipment is 15.7 years. 10 percent i.e. 52 equipments are more than 25 years old. 12 percent i.e. 61 equipments are between 21-25 years. 23 percent i.e. 120 equipments are between 16-20 years. Economic service life of equipment is taken as 15 years for normal use in international practice and is also used as DoR standard. Hence, 45 percent i.e. 233 equipments are more than 15 years old and has already crossed economic service life and needs replacement in the near future.

Chart 1



Wheel dozers, track dozers, loaders, excavators and back hoe loaders are the main equipment used for clearing slides and keeping the road open during rainy season and they are the vital equipments of DoR. There are 9 wheel dozers. Average age of wheel dozer is 20.8 years and all are more than 15 years old. There are 23 track dozers. Average age is 14 years and 8 are more than 15 years old. There are 43 wheel loaders. Average age is 14.3 years and 17 loaders are more than 15 years old. There are 12 excavators and their average age is 5.8 years. There are 9 back hoe and 6 of them are more than 15 years old. Separate report for emergency equipment replacement plan is being prepared.

Some other equipment which needs replacement and special attention are graders, tipping trucks and three wheel rollers. There are 22 graders of which 13 are more than 15 years old. There are 107 tipping trucks of which 77 are more than 15 years old. There are 53 three wheel rollers of which 25 are more than 15 years old.

Pedestrian vibrating rollers, tractors and mini dumpers are some small equipment purchased under SDC grant for routine maintenance and they have average age from 7 to 10 years.

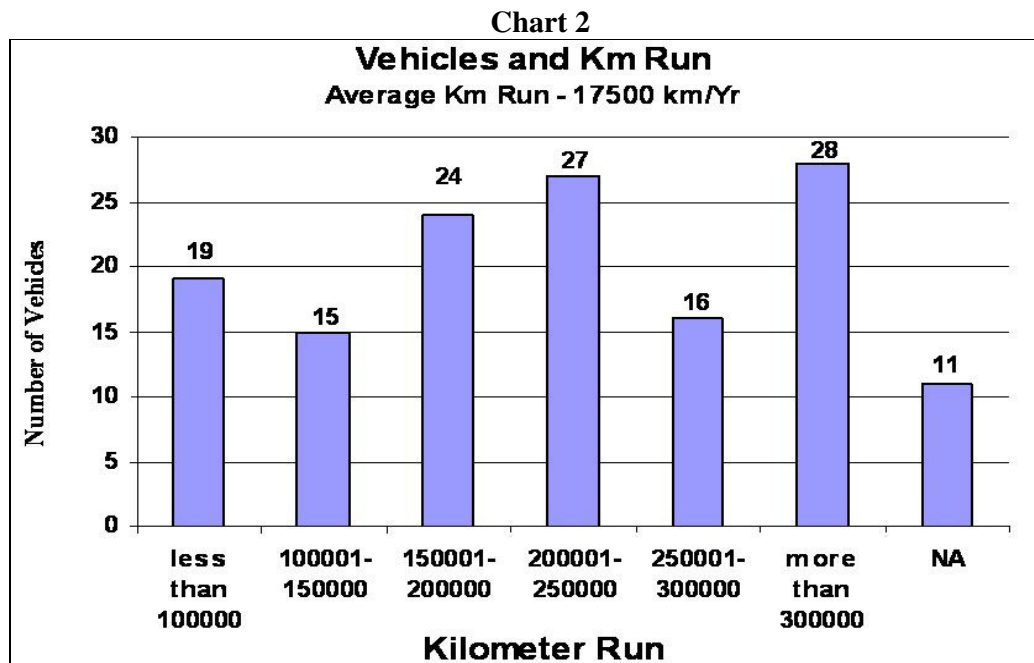
4.2 Supervision Vehicles

There are 140 units of vehicles currently in use in the department. Vehicles of projects, vehicles waiting for repair for long period and vehicles used by ministry as well as other agencies for long period have not been included. The type of vehicle used are generally Sports Utility Vehicles-Jeep (SUVs), Pick-ups and Cars. The status of the running vehicle fleet is shown in the Table 2. Out of 140 vehicles, only 77 vehicles are reliable while 63 vehicles are unreliable. The list of vehicles showing the details including year of manufacture, condition and odometer reading is attached in Annex 2.

Table.2
Summary of Vehicles

Description	Jeep	Pickup	Car	Total
Reliable	28	43	6	77
Unreliable	28	33	2	63
Total	56	76	8	140

The bar chart given below shows the analysis of 140 running vehicles with respect to their odometer reading. The vehicles in DoR, in an average, run about 17,500 km per year. Vehicles that are more than 15 years old and that have logged more than 3 Lac kilometer are unreliable. On the other hand, vehicles that are less than 15 years old and that have logged less than 3 Lac km are reliable. 28 vehicles have already logged more than 3 Lac km and needs replacement in near future. Ten Year Vehicle Replacement Plan has already been submitted for approval.



4.3 Manpower

There are 1099 posts of manpower under Mechanical Branch. Summary of different type of manpower is given in Table 3.

Table 3
Summary of Manpower

Engineers (Diff. Level)	47
Mechanics (Diff. Level)	396
Operators (Diff. Level)	224
Store Mechanics (Diff. Level)	67
Drivers (Diff. Level)	88
Administrative Staff (Diff. Level)	86
Peon	49
Guard, Sweeper and Gardener (Regular and Contract)	142
Total	1099

Out of 1099 sanctioned manpower, 890 posts are fulfilled. The main workforce consists of 396 mechanics and 224 operators of different level. About 25 percent of this post is vacant. The vacancy of technical posts at workshops in Mid-Western Region and Far-Western Region is alarming and requires immediate attention. During peak utilization, there is shortage of operators even after multi-skilling. Even the heavy drivers have been gradually trained to operate equipment. There is acute shortage of electricians in the workshops. Moreover, because of present civil service policy, vacant post of Non-gazetted III and IV class can not be fulfilled. Hence, modernization of repair and maintenance activities is necessary which could be achieved by replacing heavy work needing muscular power with power tools and modern workshop equipment. This would help the organization to keep the manpower in right-size.

4.4 Budget and Expenditure

There are five budget headings allocated for repair and maintenance of equipment and vehicles. The regular budget and expenditure of 48-3-150 of HEDs and MOs is given in Annex 3a. Out of total budget of Rs 9,03,75,000 in 48-3-150, Rs 53 Lac is allocated for repair and maintenance, major portion of Rs. 7.8 Lac is allocated for salary and rest of the portion for other logistics support.

Development Budget 48-4-670 is the main development budget heading allocated for repair and maintenance of equipment and vehicles. The budget allocated is Rs. 1.7 Crore. Budget and expenditure of 48-4-670 is given in Annex 3b.

Development budget 48-4-555 is the budget heading allocated for maintenance of Strategic Road Network (SRN). Since the budget allocated in 48-4-670 is not sufficient for repair and maintenance, Rs. 2 Crore is allocated from 48-4-555 also. Budget and expenditure of 48-4-555 is given in Annex 3c.

Development budget 48-4-695 is the budget released through the Road Board. Rs. 33 Lac is allocated in this heading. This budget is used for repair and maintenance of

equipment deployed for emergency maintenance. Budget and expenditure of 48-4-695 is given in Annex 3d.

The equipment are hired and the revenue collected is partially deposited in Revolving Fund Account. Out of 40 percent of the hire revenue deposited, 30 percent is used in repair and maintenance and remaining 10 percent for incentive. The total budget collected in the revolving fund for repair and maintenance is Rs. 1,02,38,350. Budget and expenditure of revolving fund is given in Annex 3e.

Regular and development budget allocated and the expenditures of different offices for repair and maintenance is given in Annex 3f. Summary of annual budget and expenditure of 2063/64 for repair and maintenance is given below in Table 4. The total budget for repair maintenance is Rs 5,55,38,350 and the total expenditure is Rs. 53,519,869. It also includes the contingency and other minor programs of the development budget.

Table 4
Summary of Annual Budget and Expenditure
For Repair and Maintenance

Sr. No.	Budget Heading	Budget (Rs.)	Released Amount (Rs.)	Expenditure (Rs.)	Progress (%)
1	48-3-150 Regular (Repair)	5,300,000	5,299,967	5,299,774.6	99.99
2	48-4-670 Development	17,000,000	16,750,000	16,703,176	98.25
3	48-4-555 Development	20,000,000	19,991,700	19,794,258	98.97
4	48-4-695 Development (Road Board)	3,000,000	3,000,000	3,000,000	100
5	Revolving Fund	10,238,350	10,238,350	87,22,661	85.19
	Total	55,538,350	55,280,017	53,519,869	96.36

In addition, budget allocated for vehicle procurement is Rs 50 Lac. Regular Budget allocated for MTC in 48-3-160 is Rs 37, 33,000 including Rs. 25,09,000 for salary. Development budget allocated for training from departmental human resource development program in 48-4-681 is Rs. 9,00,000.

Chapter 5

Accomplishments

5.1 Accomplishment of Mechanical Branch at Head Office

5.1.1 Vehicle Procurement

Procurement programme was approved by National Planning Commission (NPC) to procure 4 units of cars and the budget allocated was Rs. 50,00,000 under the budget heading 48-4-671. Despite, DoR's dire need to replace old vehicles, Finance Ministry gave approval to procure 2 cars only. It took a lot of persuasion at Ministry level to request the Finance Ministry for approval to procure 4 vehicles. Despite lot of effort, Mechanical Branch could procure 2 units of Hyundai Altos car only costing each Rs. 11,00,000 including VAT. Total expenditure in the budget head 48-4-671 was Rs. 23,89,749.

5.1.2 Spare Parts Procurement

Mechanical Branch procures spare parts directly from the equipment manufacturer by opening Letter of Credit (L/C) based upon the requisition from HEDs and MOs. In the F/Y 2063/064, MB has opened L/Cs worth Rs. 97,97,400 under budget headings Revolving fund, 48-4-555 and 48-4-670. The summary of spare parts procured is given in Annex 4. Expenditure in spare parts procurement including custom duty is Rs. 29,28,898 in 48-4-555, Rs 45,68,892 in 48-4-670 and 45,34,541 in Revolving Fund and the total expenditure is Rs. 1,20,32,331.

Requisitions of spare parts were received from HED Itahari, HED Kathmandu, HED Butwal, HED Nepalgunj, MO Dang, MO Pokhara and MO Surkhet. Fifteen L/Cs were opened. Most of the spare parts were urgently required. Three L/Cs each were opened to procure spare parts of Bomag vibrating rollers, Kawasaki wheel loaders and Champion motor graders. Likewise, two L/Cs were opened for procurement of Furukawa wheel loader spare parts. Similarly, one L/C each was opened for purchasing spare parts of Phoenix chip spreader, Komatsu track dozer, Daewoo excavator and Hitachi excavator. In total, 327 items of spare parts were procured.

Among the spare parts procured, some of the items of spare part that are worth mentioning are one unit of turbocharger of Kawasaki KLD-70 wheel loader, ten units of track rollers of Komatsu D50A-17 track dozer, four units of fuel injection pump of Bomag BW 172-D2 vibrating roller and one unit of computer module of Champion 710R motor grader.

5.1.3 Vehicle Replacement Plan

Vehicles are one of the most vital logistic supports necessary for the smooth operation of different units and offices of DoR. There has been continuous demand of reliable vehicles by most of the Civil Divisions. Mechanical Branch has prepared and submitted Ten Year Vehicle Replacement Plan for approval.

Alternative vehicle need assessment options have been proposed for Civil Divisions. Option 1 is based on number of engineers working in each division offices. Option 2 is based on the length of Strategic Road Network (SRN), location such as terai or hill and some other factors. Total number of vehicles necessary as per Option 1 is 179 units whereas as per Option 2, total number of vehicles necessary is 144 units.

During ARMP Workshop 2007, a set of questionnaire was distributed to the participants to set a criteria for vehicle need assessment. 31 participants answered the questionnaire. 67 % of them responded that the vehicle should be allocated on the basis of number of engineers working in the Civil Divisions.

As per Option 2, 144 vehicles are necessary for regular offices of DoR. To keep a reliable fleet of 144 vehicles, 28 vehicles need immediate replacement and 75 vehicles in total need to be replaced within 10 years. It needs an estimated budget of Rs. 22.5 Crore. As per Option 1, 179 vehicles are necessary. Additional 35 vehicles are necessary to be procured in initial few years. Total estimated budget to procure 114 vehicles in 10 years is Rs. 34.2 Crore. In an average, Rs. 20 to 30 Million will be necessary every year.

5.2 Repair and Maintenance of Equipment and Vehicles

Repair and maintenance is one of the most important activities of HEDs and MOs. Repair and maintenance activity constitutes an integral part of utilization. All the equipment and vehicles need preventive maintenance as per the manufacturer's recommended schedule. Old and unreliable machines breakdown frequently and need more repair activities to keep them in running condition. Performance of HEDs and MOs is reflected by its ability to keep maximum number of old equipment and vehicle in running condition despite resource constraint, most importantly, fund for repair and unavailability of spare parts in time. Lack of adequate training to repair new technology embedded hydraulic and transmission system in construction equipment and inadequate workshop tools as well as workshop equipment are another constraints.

In total, 17 engines of vehicles, 16 engines of construction equipment and 3 transmissions of construction equipment have been overhauled.

There have been some repairs that are worth mentioning. HED Hetauda has rehabilitated RD 015-017 Niigata grader and it has already logged 152 hours. HED Kathmandu has repaired RD 042- 007 Hitachi excavators by diagnosing the hydraulic problem after exchanging major components with another similar excavator. It has also rehabilitated Ba.3.Cha 8447 Nissan double cab pick up which was badly damaged in an accident. HED Butwal has done major overhaul of transmission system of RD 031-059 Cat D6H track dozer after remaining in breakdown condition for many years and it has already been used for 156 hours. It has also diagnosed and replaced controller unit of RD 068-061 Kawasaki loader. HED Nepalgunj has overhauled power shift transmission of RD 068-043 Furukawa loader. MO Birtamod has brought into operation RD 055-043 Mitsubishi Motor Grader, which was parked for many years at Phidim handed over by Phidim Taplejung Road Project.

5.3 Equipment Utilization

Equipment are utilized in various construction activities. They are used by Division Road Offices in emergency maintenance and routine maintenance of roads under force account. They are also used by DROs in recurrent maintenance, periodic maintenance, rehabilitation and new road construction and occasionally by some projects in construction activities. They are also utilized by contractors in departmental contracts as well as other contracts. Sometime they are hired by local consumer groups and individuals also.

The utilization of equipment is categorized in three groups, heavy equipment such as dozer, loaders, excavators, motor graders, medium equipment such as rollers, tipper trucks, water tankers and transporter such as low bed trailer and flat bed truck. Summary of utilization is given below in Table 5.

Table 5
Summary of Equipment Utilization

Sr. No.	Equipment Type	Utilization (Hrs.)
1	Heavy	33523
2	Medium	69505
3	Transporter	2137

Equipment which have been utilized for more than 1000 hours are given below in Table 6

Table 6
Summary of Equipment with more than 1000 hours of Utilization

Sr. No.	Dept. No.	M/C Description	Make Model	Office	Utilization
1	031-076	Dozer Track	Komatsu D85SE	HED Hetauda	1389
2	068-042	Loader Wheel	Furukawa FL230I	MO Birtamod	1382
3	035-053	Mini Dumper	Shaanxi F15	MO Kathmandu	1262
4	068-083	Loader Wheel	Hyundai	MO Bharatpur	1212
5	035-096	Mini Dumper	Pengyuan FC1.5	HED Kathmandu	1205
6	119-022	Tanker Water	Isuzu TXD 50	HED Kathmandu	1205
7	042-017	Excavator	Daewoo SL220	HED Itahari	1193
8	042-020	Excavator	Daewoo SL220	HED Butwal	1157
9	035-062	Mini Dumper	Shaanxi F15	MO Kathmandu	1116
10	096-0	Roller Pneumatic	Hamm GRW10	HED Itahari	1101
11	116-184	Truck Tipper	Isuzu SBR322	MO Kathmandu	1089
12	042-019	Excavator	Daewoo SL220	HED Kathmandu	1061
13	035-032	Mini Dumper	Sambron TS25M	MO Kathmandu	1058
14	031-055	Dozer Track	BEML D65E8	MO Surkhet	1009

20 equipments have run between 750 – 1000 hours, 31 equipments have run between 500 -750 hours and 80 equipments have run between 250 - 500 hours. List of equipments that have run between 500-1000 hours is given in Annex 5. This data do

not include equipment of HED Kathmandu utilized by DRO Patan, DRO Charikot and DRO Nuwakot because of unavailability of log sheet.

It has been observed that the utilization pattern varies from one Division Road Office to another. Mini dumpers and pedestrian vibrating rollers, tipping trucks, water tankers, asphalt plant are utilized more at HED Kathmandu and MO Kathmandu than at other HEDs and MOs. Equipment like Track Dozers and Excavators have comparatively higher utilization.

5.4 Theoretical Hire

Theoretical hire is calculated based on equipment utilized by Division Road Offices (DROs) and projects under Forced Account. These equipment are provided to DROs sanctioned by the Regional Director except those needing approval from Director General. Theoretical hire is the hire charged to the Divisions on the basis of what would have been charged if it has been hired by a contractor. Theoretical hire is also calculated based on actual utilization hours. However, theoretical hire based on actual utilization is taken same as theoretical hire based on shift for the equipment whose log sheet has not been received from the DROs. The notification of theoretical hire charge is sent to respective DROs so that they are able to comment on its accuracy and to discourage them from holding the equipment when not necessary.

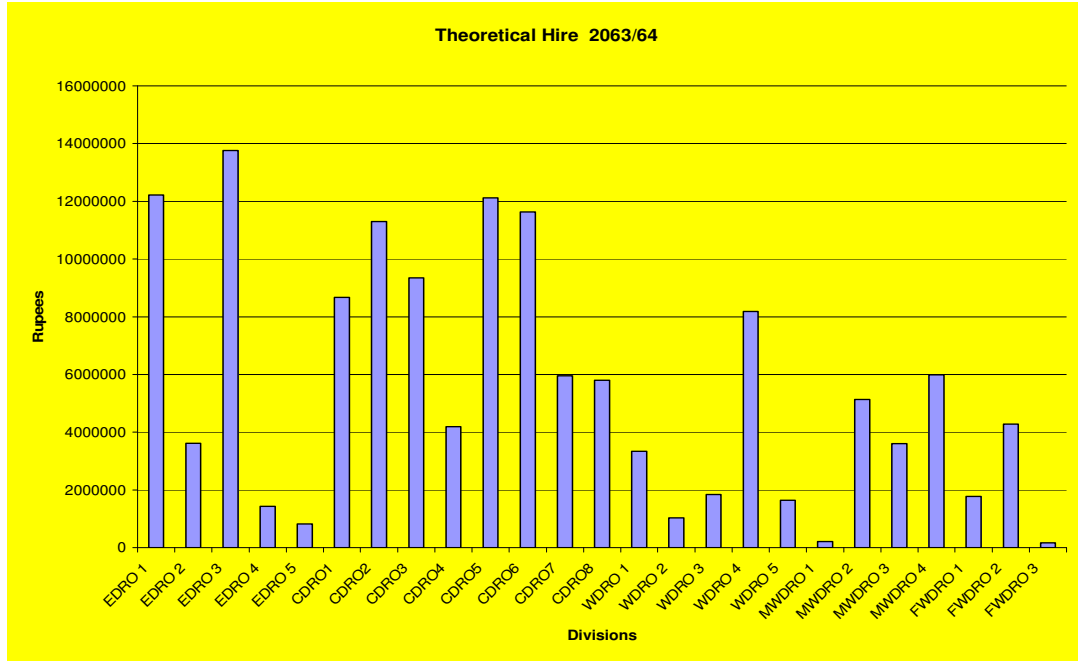
Table 7
Summary of Theoretical Hire

Sr. No.	Office	Theoretical Hire (in Rs.)		Remarks
		Shift	Actual	
1	HED Itahari	2,42,88,620		
2	HED Hetauda	2,02,72,175	91,67,420	
3	HED Kathmandu	4,33,61,780	3,59,50,680	
4	HED Butwal	1,22,31,660	52,07,487	
5	HED Nepalgunj	1,12,73,894	45,64,470	
6	HED Godawari	1,79,74,400	45,57,278	
7	MO Birtamod	67,38,550	45,43,100	
8	MO Lahan	9,53,750	4,92,970	
9	MO Janakpur	8,08,290	6,57,960	<i>Data noted over Telephone</i>
10	MO Bharatpur	32,86,500		
11	MO Kathmandu	69,58,770	38,00,502	
12	MO Pokhara	43,41,330	26,78,380	
13	MO Dang	21,75,880	20,97,028	
14	MO Surkhet	50,35,240	34,54,766	
15	MO Budar			<i>data not received</i>
	Total	15,97,00,839		

Total theoretical hire on shift basis amounted to Rs 15, 97,00,839. Details of theoretical hire are given in Annex 6. The summary of theoretical hire is given in Table 7.

Theoretical hire of the equipments utilized by the DROs is given below in Chart 3.

Chart 3



It is interesting to note that EDRO 3 has used the equipment more than other Divisions. The reason behind is that the equipment are extensively used in the Maoist Camp.

It includes theoretical hire for equipment utilized at Maoist base camp as well as satellite camps. Equipment of HED Itahari, HED Hetauda, HED Butwal, MO Birtamod and MO Bharatpur have been extensively used. Theoretical hire Charge provided by some HEDs and MOs are given below in Table 8. The theoretical hire of HED Nepalgunj and HED Godawari also includes equipment used by Surkhet- Jumla Road Project, Baitadi Darchula Road Project and Khodpe Bajhang Road Project.

Table 8
Summary of Theoretical Hire
(Equipment extensively used for Maoist Camps)

Maoist Camps supported by	Reported by	Theoretical Hire	Remarks
DRO Illam	HED Itahari	65,55,230	Danawari
	MO Birtamod	41,85,860	Danawari
DRO Damak	HED Itahari	11,41,140	Chulachuli
	MO Birtamod	1123850	Chulachuli
DRO Biratnager	HED Itahari	1,19,65,510	Yangshila, Tandri
DRO Lahan	HED Itahari	11,06,280	Belshrot
DRO Janakpur	HED Hetauda	64,73,950	Sindhuli
DRO Bharatpur	HED Hetauda	33,52,230	Mainawati
DRO Butwal	HED Butwal	48,39,310	Jhyaltungdanda and others
DRO Kailali	HED Godawari	15,06,480	Talband
Total		4,22,49,840	

Security agencies have extensively used equipment of HED Nepalgunj and HED Godawari. In addition, HED Hetauda, HED Butwal and MO Lahan have also provided equipment to the security agencies.

Cat D3B dozer, as per the Cabinet decision, has been provided by HED Kathmandu to Kathmandu Metropolitan Office for six months.

5.5 Actual Hire Revenue

HEDs and MOs provide equipment on hire when it is not engaged in departmental use. The equipment is hired by departmental contractors, private contractors different agencies, consumer groups and individuals. The actual hire revenue of all HEDs and MOs is given below in Table 9.

Table 9
Summary of Actual Hire Revenue

Office	Hire Revenue in Rs.
HED Itahari	42,15,927.00
HED Hetauda	64,04,804.00
HED Kathmandu	85,18,128.00
HED Butwal	91,38,025.00
HED Nepalgunj	44,64,678.00
HED Godawari	20,41,055.00
MO Birtamod	9,87,190.00
MO Lahan	1,68,290.00
MO Janakpur	3,23,940.00
MO Bharatpur	3,60,060.00
MO Kathmandu	4,35,570.00
MO Pokhara	20,02,842.00
MO Dang	11,60,595.00
MO Surkhet	8,56,340.00
MO Budar	90,160.00
Total	4,11,67,604.00

Total hire revenue collected in the Fiscal Year 2063/64 is Rs 4,11,67,604. The hire revenue collected by HED Butwal amounting to Rs.91,38,025 is the highest among the HEDs and Rs 20,02.842 collected by MO Pokhara is the highest among the MOs.

HED Butwal has provided breakdown of hire revenue collected from departmental and non-departmental contractors. The hire revenue from departmental contractors is Rs 24,95,988 which is 27 % of total hire revenue of HED Butwal. Whereas, share of hire revenue of departmental contractor is Rs 31,72,697 which is 67 % of the total hire revenue in case of HED Itahari. 57 % of hire revenue from departmental contractors of HED Itahari was comprised of hire revenue from RNDP contractors

Chapter 6

Operating Profit and Loss Analysis

Operating profit and loss for the fiscal year 2063/64 is calculated based on the expenditure of the Mechanical Branch, expenditure of 6 HEDs and 9 MOs. Expenditure consists of total expenditure in Regular budget head 48-3-150 including salary, total expenditure in repair and maintenance in budget heads 48-4-670, 48-4-555, 48-4-695 (under Roads board) and Revolving Fund. It also includes 9.8 % incentive distributed to employees of HEDs and MOs. The total expenditure was Rs 13,18,00,104. Gross income is sum of theoretical hire based on shift basis and actual hire revenue. Gross income was Rs 20,08,68,443. The operating profit for the fiscal year 2063/64 is Rs. 6,90,68,339. The operating profit has not taken into account depreciation of the equipment. Details of income and expenditure for individual offices are given in Annex 7. Summary of Income and Expenditure is given below in Table 10.

Table 10
Summary of Income and Expenditure

Description	Amount in Rs.
Expenditure	
1. Regular 48-3-150	8,09,34,351
2. Development 48-4-670	1,67,03,176
3. Development 48-4-555	1,97,94,258
4. Development 48-4-695 (Road Board)	30,00,000
5. Revolving Fund (Repair and Maintenance)	87,22,660
6. Revolving Fund (9.8 % Incentive)	26,45,659
Total Expenditure	13,18,00,104
Income	
1. Theoretical Hire	15,97,00,839
2. Actual Hire Revenue	4,11,67,604
Gross Income	20,08,68,443
Operating Profit	6,90,68,339

Chapter 7

Skill Development

Mechanical training centre is dedicated for the skill development of the mechanics and operators of HEDs and MOs. It also imparts training to the interested individuals as well as trainees from other private and government organizations. It has approved training fee for modular courses and it also organizes custom made courses. It is the only organization in Nepal which gives training in repair, maintenance and operation of construction equipment

In the fiscal year 2063/064, 95 nos. of trainees were trained on different courses. Summary of the trainings conducted is given below in Table 11.

Table 11
Summary of Training Conducted

S. N.	DESCRIPTION OF TRAINING	ACHIEVEMENT		REMARKS
		Departmental	Others	
Mechanic Training				
1	Basic Mechanic (3 Month)	28		
Operator Training				
2	Dozer Operator	6		
3	Motor Grader	4		
4	Excavator Operator		4	
Custom Made courses				
5	Excavator General Operating System		10	
6	Crane General Operating System		6	
7	Hydraulic System	7	1	Engineers
8	Power shift Transmission	24		3 Engineers
9	Diesel Engine	5		Engineers
	Total	74	21	

3 engineers and 5 instructors were trained on “Power Shift Transmission”. The training was executed by trainers from Tractor India, authorized dealer of Caterpillar equipment under RMDP program. The training was conducted in live CAT 920 Loader of the Training Centre. Later, the trainers of the MTC improved and gave the training to 16 numbers of mechanics from various HEDs and MOs. It was a remarkable achievement of MTC because it is the first of this kind of training in Power Shift Transmission in live equipment where the mechanics disassembled and assembled a power shift

transmission of running equipment. It also was an attempt made by MTC to cope with the technological advancement in the construction equipment.

5 new engineers were given orientation training in diesel engine system and 8 new engineers (including 1 from Irrigation Department) were given orientation training in hydraulic system.

The budget and expenditure of the MTC for the fiscal year 2063/64 is given below in the Table 12. The regular budget 48-3-160 of Rs. 37,33,000 includes Rs 25,09,000 for salary, Rs 1,50,000 for program expenses (dedicated primarily to conduct training), Rs 1,50,000 for TA-DA (dedicated primarily to conduct training) and Rs 1,60,000 for fuel (major portion dedicated to operator training).

Table 12
Summary of Budget and Expenditure of MTC

Sr. No.	Budget Heading	Budget (Rs.)	Expenditure (Rs.)
1	48-3-160 Regular	37,33,000	30,88,614
2	48-4-681 Development	900,000	887,000
3	Revolving Fund	514,535	28,425
4	Total	51,47,535	40,04,039

Besides the theoretical training fee for providing training to DoR employees, actual income from the training fee for providing training to other trainees amount to Rs 3, 26,000 and the actual hire revenue from hiring the equipment when not engaged in the training was Rs. 1,81,920.

Chapter 8

Auction

The department has a policy to auction equipment and vehicles which are economically not repairable, obsolete and scrap asset. HEDs and MOs are required to get approval from Mechanical Branch to initiate auction process after yearly assessment. Despite, equipment and vehicles being economically not viable, they are not allowed to auction in case similar make and model of equipment or vehicles are running in other HEDs/MOs because they are sometime very useful for cannibalizing. The detail list of equipment and vehicles auctioned in FY 2063/64 is given in Annex 8. Auction status in the F/Y 2063/064 is given below in Table 13.

Table 13
Auction Status

Office	Details of Auction	Date of initial approval to initiate Auction from Mechanical Branch.	Date of Final approval for Auction from DOR	Date of Auction from the concerned office
MO Pokhara	23 units of equipment, vehicles and motorcycles		2/24/2064	3/24/2064
HED Kathmandu	19 units of equipment, vehicles and motorcycles		3/5/2064	Advertise on 11/3/2064
HED Nepalgunj	15 units of Heavy equipment, pick up and Motorcycle	12/16/2063		

Chapter 9

Audit Report

Mechanical branch, HEDs, MOs and MTC have given due attention towards financial irregularities to minimize audit objection. In the fiscal year 2063/64, HED Itahari, HED Hetauda, HED Kathmandu, HED Neplagunj, HED Godawari, MO Birtamod, MO Lahan, MO Janakpur, MO Bharatpur, MO Kathmandu, MO Pokhara, MO Dang, MO Budar and MTC have no financial irregularities. HED Kathmandu after constant effort for many years settled audit objection amounting to Rs 92 Lacs related to equipment used by Waste Disposal Management Centre. There is no financial irregularity remaining to be settled in MO Pokhara and MO Dang.

In the fiscal year 2063/64, there was financial irregularities amounting to Rs 16 Lacs, financial irregularities settled amounting to Rs 1 Crore 71 Lacs and financial irregularities remaining to be settled amounting Rs 1 Crore 48 Lacs. The summary of financial irregularities status of fiscal year 2063/64 is given below in Table 14.

Table 14
Summary of Financial Irregularities Status

Rs. in Thousand				
Sr. No.	Office	Financial Irregularities of F/Y 063-064	Financial Irregularities settled in F/Y 063-064	Financial Irregularities remaining till F/Y 063-064
1	Mechanical Branch	1300	6434	3234
2	HED Itahari		509	1341
3	HED Hetauda		14	18
4	HED Kathmandu		9221	2999
5	HED Butwal	167	187	229
6	HED Nepalgunj		7	36
7	HED Godawari		401	4240
8	MO Birtamod		20	1
9	MO Lahan		5	7
10	MO Janakpur			61
11	MO Bharatpur			1
12	MO Kathmandu		79	776
13	MO Pokhara			
14	MO Dang			
15	MO Surkhet	137	85	243
16	MO Budar			1017
17	MTC		229	652
	Total	1604	17191	14855

Chapter 10

Issues

10.1 Equipment Policy

The department seems to lack clear policy for holding construction equipment and its utilization. World Bank has been the main donor for supporting DoR with equipment need. During Road Maintenance Development Program (RMDP) and Road Sector Development Program (RSDP) World Bank has not supported for procuring new construction equipment. World Bank has a view that all new construction, repair and maintenance of road will be done by outsourcing and contractors own or will own required equipment. The fiscal policy of the government also limits utilization of equipment under forced account. DoR also seems to have adopted the policy of utilizing the equipment only for clearing the slides and opening the road during rainy season. However, the record of equipment utilization shows that it has not decreased. Moreover, private sectors still do not hold sufficient number of construction equipment and they are still hiring equipment from DoR to fulfill their contractual obligations. Even the big contractors involved in the RMDP and RNDP have hired significant numbers of DoR Equipment. During crisis management of new construction, periodic maintenance, recurrent maintenance and rehabilitation, DoR has always relied on its own equipment. Hence, DoR needs to have a clear policy regarding what will be the use of equipment, where it will be used and how it will be used.

Mechanical Branch can optimize the fleet holding, prepare equipment replacement plan, plan manpower recruitment and workshop setups depending upon the utilization policy of equipment to ensure successful implementation of the programme of DoR.

10.2 Old and Unreliable fleet of equipment

The fleet of construction equipment owned by DoR is very old. The average age of equipment is 15.7 years old. 45 percent equipment is older than 15 years and has crossed its service life. The equipment that is essential for rainy season is insufficient in numbers. 17 units of loaders are more than 15 years old and need immediate replacement. The road length is increasing every year and most of the new roads constructed are hilly roads that require equipment for clearing land slides. Hence, DoR needs to replace old equipment as well as procure additional equipment to maintain increasing length of new road.

DoR will soon face a crisis during rainy season and it will have detrimental effect in the performance of DoR. Moreover, other equipments are also getting old and if they are not replaced and replenished, DoR will not be able to support not only departmental need for using in forced account and crisis management but also the contractor's need.

10.3 Vehicle Replacement Need

Vehicles are one of the most vital logistic supports necessary for smooth operation of different units and offices of DoR. There are 140 vehicles currently in use in the department. Out of 140 vehicles, only 77 vehicles are reliable while 63 vehicles are unreliable. Number of reliable vehicles in DoR is remarkably inadequate. There has been continuous demand of reliable vehicles by most of the Civil Divisions. To keep a reliable fleet of minimal size 144 units of vehicles are required. Out of which, 28 vehicles need immediate replacement and 75 vehicles in total need to be replaced within 10 years. The department should seriously consider replacing unreliable vehicles.

If vehicles, that are very old and unreliable, are not replaced in near future, there will be a huge shortage of reliable vehicles and will have detrimental effect in the effectiveness and efficiency of the department.

10.4 Under Utilization of Equipment

The Change in government policy has constricted the former way of carrying out construction and maintenance activities under forced-account using equipment. DoR is still the owner of largest fleet of construction equipment. From Jestha to Ashwin, the workshops are fully loaded with repair and maintenance of the equipment necessary for deployment in rainy season. From Kartick to Baisakh, there is not sufficient load for the mechanics as well as operators. There are still a significant number of equipment which have yearly utilization less than 250 hours. This is far below the economic standard necessary for holding the fleet.

Hence, DoR should plan some maintenance and new construction of roads under forced account to increase the utilization.

10.5 Manpower Planning

It is already pointed out that workshop load is seasonal. Lack of equipment holding policy is having detrimental effect in manpower planning. There has been no recruitment of fresh mechanics and operators for more than six - seven years. Number of mechanics and operators are decreasing because of compulsory retirement. Moreover, every year some manpower is resigning. There is acute shortage of some manpower in some HEDs and MOs. Mechanical Branch is working out on right sizing the organization to match the fleet size by multi-skilling some operators and out sourcing some of the jobs.

It is essential to have a clear equipment holding policy so that necessary manpower can be planned and new recruitment initiated. Otherwise, there can be shortage of manpower having adverse effect in the performance of the HEDs and MOs.

10.6 Training Need

With the advancement in the technology, the new equipments are equipped with sophisticated electronic control for fuel and hydraulic system with computerized self diagnosis system. HEDs and MOs are already using hit and trial method for repairing such equipment instead of adopting proper systematic diagnosis. Hence, it is essential to enhance the training capacity of the MTC. Moreover, new excavators and graders are equipped with computer control for increasing performance of operators. MTC is the only institute in the country training and upgrading operators and mechanics necessary not only for DoR but also for the construction industry of Nepal. Moreover, there is increasing demand of skilled operators and mechanics for recruitment in Malaysia and Gulf Countries.

A serious thought in national perspective should be given to equip MTC with modern training aids and equipments as well as upgrade trainers if MTC is to fulfill its planned objective.

10.7 Relocation and Refurbishment of Workshops

MO Kathmandu has been temporarily shifted to MTC two years back when it was decided to handover the premise of Kathmandu Division, MO Kathmandu and Central region Directorate at Minbhawan to construct Civil Service Hospital. Similarly, MO Surkhet has been shifted to “Gharelu Tatha Sana Udhog Bikash Samiti’s” workshop shed after the workshop at Subbakuna was damaged by then Maoist movement. Hence, relocation of MO Kathmandu should be planned as well as permanent owning of current workshop used by MO Surkhet should be initiated. It is also necessary to construct new workshop for MO Kathmandu and refurbish workshop of MO Surkhet. Other HEDs and MOs have also become old and some regular maintenance budget to repair the workshop building needs to be allocated.

10.8 Workshop Tools and Equipment

Most of the hand tools and workshop tools at all HEDs and MOs are old and worn out. Some hand tools were purchased in the FY 2062/63, otherwise all hand tools and workshop tools are older than 10 years. Workplace environment at all HEDs and MOs is traditional requiring more man power to perform jobs requiring heavy lifting and shifting. It is necessary to gradually modernize the workshops with modern power tools, diagnostic tools and overheard cranes to improve the performance and efficiency. Modernize training set up will also be necessary at MTC to train the mechanics.

Downsizing of mechanic manpower will be possible if the workshops are modernized.

Safety is still in low priority. There have been occasional accidents at the workshop because the mechanics and operators sometimes do not follow simple safety rules or sometimes there are not adequate gadgets. Modern workshops and safety training will not only encourage the mechanics and operators to adopt safety practices but it will also motivate them.

10.9 Equipment Demand by External Agencies

Occasionally, construction equipment like dozers, loaders, excavators, graders, trucks are requested to be made available free of cost by DDCs, VDCs, Nagar Palikas and User Groups. Through a press release in 2054 by the Ministry, external agencies are not allowed to use DoR equipment free of cost. Equipment should not be given free of cost to external agencies because,

- Huge number of applications are received which become unmanageable.
- Sometimes equipment are not returned in time or not returned at all. HEDs/MOs use to face protest from the local people while trying to take it back to the yard. Some equipment, which could not be returned have been handed over to the Nepal Army.
- If the equipment breaks down, sometimes no body take care arising problem of vandalism and security.
- Excessive use of equipment results in shortage of allocated fund for repair and maintenance resulting in unavailability of equipment during emergency maintenance.
- It causes adverse effect in environment and rural employment.
- There will be objection by Auditor General's office if equipment is used by other agencies except used by DOR offices on forced account or for security purpose.

Chapter 11

Conclusion

Department of Roads holds a large fleet of construction equipment and supervision vehicles. Mechanical Branch is responsible for their management.

There are 512 units of active equipment in DoR. Average age of the equipment is 15.7 years. 233 units (45 %) of equipments are more than 15 years old and have already crossed economic service life and needs replacement.

There are 140 vehicles currently in use in the department. Out of 140 vehicles, only 77 vehicles are reliable. 28 vehicles have already logged more than 3,00,000 km and needs immediate replacement. Ten Year Vehicle Replacement Plan has already been submitted.

There are 1099 posts designated for offices under Mechanical Branch. The main workforce consists of 396 mechanics and 224 operators of different levels. About 25 percent of these posts are vacant.

The total budget allocated for repair maintenance is Rs 5,55,38,350 and the total expenditure is Rs. 5,35,19,869 including regular, development budget and Revolving Fund.

In the fiscal year 2063/64, 14 numbers of equipment have been utilized for more than 1000 hours and 51 units have run between 500 - 1000 hours. Total theoretical hire on shift basis amounted to Rs 15,97,00,839 and the total actual hire revenue collected was Rs 4,11,67,604. Gross income was Rs 20,08,68,443 and the total expenditure was Rs 13,18,00,104. The operating profit was Rs.6,90,68,339. Hence, it proves that Mechanical Branch together with HEDs and MOs are assets rather than liabilities.

In the Fiscal year 2063/64, 23 units of equipment, vehicles and motorcycle were auctioned. 95 trainees were trained at MTC. The financial irregularities have reduced considerably with no financial irregularities in 13 offices of HEDs and MOs. There is no audited irregularities to be settled in MO Pokhara and MO Dang.

There are some issues that need serious attention. Most importantly, the equipment holding policy of DOR must be clear so that Mechanical Branch can optimize the fleet holding, prepare equipment replacement plan, plan manpower recruitment and workshop setups depending upon the utilization policy of the equipment by DoR.

DoR needs to replace old equipment, otherwise DoR will soon face a crisis during rainy season and crisis management and it will have a detrimental effect in the performance of DOR

There is a high demand of reliable supervision vehicles. If vehicles are not replaced as proposed in Ten year vehicle replacement plan, there will be a huge shortage of reliable vehicles and it will have adverse effect in the efficiency and effectiveness of the department.

To increase the performance of HEDs and MOs, regular budget must be provided to maintain the workshop, replace worn out tools, modernize workshop with modern tools. Special emphasis should be given to develop MTC so that it can train and develop the necessary skill to cope with the challenge of maintaining and operating equipment fitted with modern sophisticated components.

Last but not the least, DoR should plan to utilize existing equipment and manpower with additional budgetary input in repair, maintenance and operation so that output from the scarce resources allocated to DOR can be maximized.

ANNEX

ANNEX-1

List of Active Equipment

Sr. No.	Sr. No. by Type of M/C	Regd. No.	Dept. No.	M/C Description	Make Model	Age in Yrs	Office
1	1		001-001	Asphalt Plant	Marshal	41	HED Kathmandu
2	2		001-002	Asphalt Plant	Miller	41	HED Kathmandu
3	3		001-003	Asphalt Plant	Brahm Miller	27	MO Pokhara
4	4		001-004	Asphalt Plant	Brahm Miller	26	HED Kathmandu
5	5		001-007	Asphalt Plant	Brahm Miller	25	HED Kathmandu
6	6		001-008	Asphalt Plant	Brahm Miller	24	HED Kathmandu
7	7		001-013	Ashalt Plant	Uinversal Sport Mix	8	HED Kathmandu
8	1	PHU64-02	002-	Asphalt Paver	Blaw -Knox / BK 165	14	HED Kathmandu
9	1		017-	Air Compressor	Altas copco	13	HED Kathmandu
10	2		017-	Air Compressor	Altas copco	13	HED Kathmandu
11	3		017-	Air Compressor	AtlasCopco	13	MO Budar
12	4		017-021	Air Compressor	Kirloskar	26	MO Pokhara
13	5		017-055	Air Compressor	Kirloskar	8	HED Hetauda
14	6		017-056	Air Compressor	Holman	15	HED Itahari
15	7		017-058	Air Compressor	Holman	15	HED Butwal
16	1	Bhe.1.Ga.68	021-002	Crane Mobile	Tadano TS150 L	28	HED Nepalgunj
17	2		021-003	Crane Mobile	Tadano KB100-L	27	HED Godavari
18	3		021-004	Crane Mobile	Tadano TS100-L	19	HED Kathmandu
19	4	Na.1.Ga.359	021-005	Crane Mobile	Tadano TS100-L	19	HED Hetauda
20	5	Lu.1.Ga.2	021-006	Crane Mobile	Tadano TS100-L	19	HED Butwal
21	6	Ko.1.Ga.43	021-007	Crane Mobile	Tadano TS100-L	19	HED Itahari
22	1		024-003	Concrete Cutter	Weber	9	MO Dang
23	2		024-007	Concrete Cutter	Stihl, Germany	12	MO Pokhara
24	1		030-009	Dozer Wheel	Cat 814	26	HED Kathmandu
25	2		030-010	Dozer Wheel	Hanomag D66C	25	HED Hetauda
26	3		030-011	Dozer Wheel	Hanomag D66C	25	HED Hetauda
27	4		030-012	Dozer Wheel	Hanomag D66D	19	HED Butwal
28	5		030-013	Dozer Wheel	Hanomag D66D	19	HED Butwal
29	6		030-014	Dozer Wheel	Hanomag D66D	19	HED Itahari
30	7		030-015	Dozer Wheel	Hanomag D66D	19	MO Pokhara
31	8		030-017	Dozer Wheel	Hanomag D66D	19	HED Nepalgunj
32	9		030-018	Dozer Wheel	Hanomag D66D	16	HED Godavari
33	1		031-033	Dozer Track	MF D700C	28	HED Butwal
34	2		031-036	Dozer Track	MFD 700C	31	HED Nepalgunj
35	3		031-045	Dozer Track	Komatsu D85	24	HED Hetauda
36	4		031-054	Dozer Track	BEML D65E8	14	HED Godavari
37	5		031-055	Dozer Track	BEML D65E8	14	MO Surkhet
38	6		031-058	Dozer Track	BEML D65E8	14	HED Godavari
39	7		031-059	Dozer Track	Cat D6H	15	HED Butwal
40	8		031-060	Dozer Track	Cat D7G	17	HED Kathmandu

Sr. No.	Sr. No. by Type of M/C	Regd. No.	Dept. No.	M/C Description	Make Model	Age in Yrs	Office
41	9		031-062	Dozer Track	Shandong TY220	13	HED Kathmandu
42	10		031-065	Dozer Track	Yishan TY160	9	HED Hetauda
43	11		031-066	Dozer Track	Yishan TY160	9	HED Butwal
44	12		031-067	Dozer Track	Yisnan	9	HED Nepalgunj
45	13		031-070	Dozer Track	Cat D7G	17	HED Itahari
46	14		031-070	Dozer Track	Cat D7G	17	HED Nepalgunj
47	15		031-071	Dozer Track	Komatsu D53A	17	HED Kathmandu
48	16		031-073	Dozer Track	Komatsu D53A	17	HED Godavari
49	17		031-074	Dozer Track	Komatsu D85SESS2A	3	HED Itahari
50	18		031-075	Dozer Track	Komatsu D85SESS2A	3	HED Kathmandu
51	19		031-076	Dozer Track	Komatsu D85SESS2A	3	HED Hetauda
52	20		031-077	Dozer Track	Komatu D50A	10	MO Budar
53	21		031-106	Dozer Track	Komatsu D50A-17	10	HED Itahari
54	22		031-112	Dozer Track	Cat D3B	15	HED Kathmandu
55	23		031-114	Dozer Track	Komatsu D50A-17	14	MO Dang
56	1	Ba.1.Ga.693	032-005	Bitumen Distributor	Hino Hanta FF 173 K	24	HED Kathmandu
57	2	Na.1.Ga.358	032-007	Bitumen Distributor	Isuzu Hanta DS50	18	HED Hetauda
58	3	Na.1.Ga.360	032-008	Bitumen Distributor	Isuzu Hanta DS50	18	HED Kathmandu
59	4	Lu 1 Ga 60	032-009	Bitumen Distributor	Etnyre International	15	HED Kathmandu
60	5	Lu 1 ga 61	032-010	Bitumen Distributor	Etnyre International	15	HED Godavari
61	6	Lu.A.Ga.62	032-011	Bitumen Distributor	Etnyre International	15	HED Butwal
62	7	Lu 1 ga 68	032-012	Bitumen Distributor	Etnyre International	10	HED Godavari
63	8	Lu.A.Ga.69	032-013	Bitumen Distributor	Etnyre International	11	HED Butwal
64	9	Ko.1.Ga.65	032-014	Bitumen Distributor	Bedford AWD B/F	14	HED Itahari
65	1		035-002	Mini Dumper	Barford	36	HED Nepalgunj
66	2		035-025	Mini Dumper	Sambron TS25M	22	MO Kathmandu
67	3		035-030	Mini Dumper	Sambron TS25M	22	MO Kathmandu
68	4		035-032	Mini Dumper	Sambron TS25M	22	MO Kathmandu
69	5		035-037	Mini Dumper	Sambron TS25M	22	HED Kathmandu
70	6		035-044	Mini Dumper	Sambron TS25M	22	MO Kathmandu
71	7		035-047	Mini Dumper	Sambron TS25M	22	MO Kathmandu
72	8		035-053	Mini Dumper	Shaanxi F15	13	MO Kathmandu
73	9		035-055	Mini Dumper	Shaanxi F15	13	MO Bharatpur
74	10		035-055	Mini Dumper	Shaanxi F15	13	HED Kathmandu
75	11		035-056	Mini Dumper	Shaanxi F15	13	HED Kathmandu
76	12		035-057	Mini Dumper	Shaanxi F15	13	HED Kathmandu
77	13		035-058	Mini Dumper	Shaanxi F15	13	HED Kathmandu
78	14		035-061	Mini Dumper	Shaanxi F15	13	MO Kathmandu
79	15		035-062	Mini Dumper	Shaanxi F15	13	MO Kathmandu
80	16		035-064	Mini Dumper	Jiangsu F15	8	MO Kathmandu
81	17		035-065	Mini Dumper	Jiangsu F15	8	MO Kathmandu
82	18		035-066	Mini Dumper	Jiangsu F15	8	HED Kathmandu
83	19		035-067	Mini Dumper	Jiangsu F15	8	HED Kathmandu
84	20		035-069	Mini Dumper	Jiangsu F15	8	HED Kathmandu

Sr. No.	Sr. No. by Type of M/C	Regd. No.	Dept. No.	M/C Description	Make Model	Age in Yrs	Office
85	21		035-070	Mini Dumper	Jiangsu F15	8	HED Kathmandu
86	22		035-071	Mini Dumper	Jiangsu F15	8	HED Kathmandu
87	23		035-072	Mini Dumper	Jiangsu F15	8	HED Kathmandu
88	24		035-073	Mini Dumper	Jiangsu F15	8	HED Hetauda
89	25		035-075	Mini Dumper	Jiangsu F15	8	HED Butwal
90	26		035-076	Mini Dumper	Jiangsu F15	8	HED Butwal
91	27		035-077	Mini Dumper	Jiangsu F15	8	MO Dang
92	28		035-078	Mini Dumper	Jiangsu F15	8	HED Nepalgunj
93	29		035-080	Mini Dumper	Jiangsu F15	8	HED Godavari
94	30		035-082	Mini Dumper	Jiangsu F15	8	MO Pokhara
95	31		035-083	Mini Dumper	Jiangsu F15	8	MO Dang
96	32		035-	Mini Dumper	Thawaite	15	MO Janakpur
97	33	Ko.1.Ga.77	035-087	Mini Dumper	Thawaite	15	MO Birtamord
98	34		035-088	Mini Dumper	Jinhou F15	5	HED Kathmandu
99	35		035-089	Mini Dumper	Jaingsu F15	4	HED Kathmandu
100	36		035-090	Mini Dumper	Jaingsu F15	4	HED Kathmandu
101	37		035-091	Mini Dumper	Jiangsu F15	3	HED Butwal
102	38		035-092	Mini Dumper	Jiangsu F15	3	HED Butwal
103	39		035-093	Mini Dumper	Chancai FC1	2	HED Kathmandu
104	40		035-094	Mini Dumper	Chancai FC1	2	HED Kathmandu
105	41		035-095	Mini Dumper	Pengyuan FC1.5	1	HED Kathmandu
106	42		035-095	Mini Dumper	Pengyuan FC1.5	1	MO Kathmandu
107	43		035-096	Mini Dumper	Pengyuan FC1.5	1	HED Kathmandu
108	44		035-097	Mini Dumper	Pengyuan FC1.5	1	HED Kathmandu
109	1		042-007	Excavator	Hitachi EX200-3	11	HED Kathmandu
110	2		042-008	Excavator	Hitachi EX200-3	11	HED Kathmandu
111	3		042-009	Excavator	Hitachi EX200-3	11	HED Itahari
112	4		042-012	Excavator	Komatsu PC-150	9	HED Nepalgunj
113	5		042-015	Excavator	Daewoo Solar 130	5	HED Butwal
114	6		042-016	Excavator	Kobelco SK115SR	4	HED Hetauda
115	7		042-017	Excavator	Daewoo SL220 LC-V	3	HED Itahari
116	8		042-018	Excavator	Daewoo SL220 LC-V	3	HED Hetauda
117	9		042-019	Excavator	Daewoo SL220 LC-V	3	HED Kathmandu
118	10		042-020	Excavator	Daewoo SL220 LC-V	3	HED Butwal
119	11		042-021	Excavator	Daewoo SL220 LC-V	3	HED Nepalgunj
120	12		042-022	Excavator	Daewoo SL220 LC-V	3	HED Godavari
121	1		055-	Grader Motor	Champion 710	14	MO Birtamord
122	2		055-017	Grader Motor	Nigata N530 PSA	35	HED Hetauda
123	3		055-035	Grader Motor	Nigata N530 PSA	27	MO Dang
124	4		055-036	Grader Motor	Aveling Barfod	27	MO Lahan
125	5		055-040	Grader Motor	Mitsubishi MG350-R	19	HED Kathmandu
126	6		055-041	Grader Motor	Mitsubishi MG350-R	19	MO Pokhara
127	7		055-042	Grader Motor	Mitsubishi MG350-R	19	HED Kathmandu
128	8		055-043	Grader Motor	Mitsubishi MG350-R	19	MO Birtamod

Sr. No.	Sr. No. by Type of M/C	Regd. No.	Dept. No.	M/C Description	Make Model	Age in Yrs	Office
129	9		055-045	Grader Motor	Komatsu GD511R	17	HED Godavari
130	10		055- 046	Grader Motor	Komatsu GD511R	17	HED Nepalgunj
131	11		055-049	Grader Motor	Champion 710	14	HED Itahari
132	12		055-050	Grader Motor	Champion 710	14	HED Nepalgunj
133	13		055-051	Grader Motor	Champion 710	14	HED Butwal
134	14		055-053	Grader Motor	Champion 710	14	HED Butwal
135	15		055-054	Grader Motor	Champion 710	14	HED Kathmandu
136	16		055-056	Grader Motor	BEML	11	HED Godavari
137	17		055-058	Grader Motor	Champion 710	10	HED Kathmandu
138	18		055-059	Grader Motor	Cat 120G	15	HED Itahari
139	19	Ja 1 Yo 253	055-101	Grader Motor	Komatsu GD405A	17	MO Janakpur
140	20		055-102	Grader Motor	Komatsu GD405A	17	HED Kathmandu
141	21		055-103	Grader Motor	Komatsu GD405A	17	HED Hetauda
142	22		055-104	Grader Motor	Komatsu GD405A	17	HED Hetauda
143	1		062-	Bitumin heater		19	MO Pokhara
144	2		062-004	Bitumin heater		19	HED Kathmandu
145	3		062-008	Bitumin heater		19	HED Kathmandu
146	1		068-	Loader Wheel	JCB	14	MO Birtamord
147	2		068-008	Loader Wheel	Michigan 75IIIA	34	HED Godavari
148	3		068-012	Loader Wheel	Michigan 75IIIA	34	MO Pokhara
149	4		068-029	Loader Wheel	Kawasaki KSS70	26	HED Kathmandu
150	5		068-031	Loader Wheel	Kawasaki KSS70	26	MO Pokhara
151	6		068-035	Loader Wheel	Kawasaki KSS70	25	HED Nepalgunj
152	7		068-037	Loader Wheel	Kawasaki KSS70	25	MO Pokhara
153	8		068-039	Loader Wheel	Furukawa FL230I	18	HED Butwal
154	9		068-040	Loader Wheel	Furukawa FL230I	18	MO Janakpur
155	10		068-041	Loader Wheel	Furukawa FL230I	18	MO Lahan
156	11		068-042	Loader Wheel	Furukawa FL230I	18	MO Birtamord
157	12		068-043	Loader Wheel	Furukawa FL230I	18	HED Nepalgunj
158	13		068-046	Loader Wheel	Furukawa FL200I	17	MO Budar
159	14		068-048	Loader Wheel	EJCB 430	15	MO Lahan
160	15		068-049	Loader Wheel	EJCB 430	15	HED Butwal
161	16		068-050	Loader Wheel	EJCB 430	15	HED Butwal
162	17		068-051	Loader Wheel	EJCB	15	HED Godavari
163	18		068-052	Loader Wheel	EJCB 430	15	HED Butwal
164	19		068-054	Loader Wheel	EJCB 430	15	HED Hetauda
165	20		068-058	Loader Wheel	EJCB 430	15	HED Kathmandu
166	21		068-060	Loader Wheel	Furukawa FL200-I	13	MO Dang
167	22		068-061	Loader Wheel	Kawasaki 70ZIV	11	HED Butwal
168	23		068-062	Loader Wheel	Kawasaki 70ZIV	11	HED Godavari
169	24		068-063	Loader Wheel	Kawasaki 70ZIV	10	HED Godavari
170	25		068-064	Loader Wheel	Kawasaki-70ZIV	10	HED Kathmandu
171	26		068-065	Loader Wheel	Kawasaki 70ZIV	10	HED Nepalgunj
172	27		068-066	Loader Wheel	Kawasaki 70ZIV	10	HED Itahari

Sr. No.	Sr. No. by Type of M/C	Regd. No.	Dept. No.	M/C Description	Make Model	Age in Yrs	Office
173	28		068-070	Loader Wheel	Kawasaki 70ZIV	10	HED Hetauda
174	29		068-076	Loader Wheel	Cat 950	33	HED Butwal
175	30		068-078	Loader Wheel	JCB 530	17	HED Butwal
176	31		068-079	Loader Wheel	Kawasaki 70ZIV	6	HED Butwal
177	32		068-080	Loader Wheel	Kawasaki 70ZIV	5	HED Hetauda
178	33		068-081	Loader Wheel	Hyundai HL757-7	3	HED Itahari
179	34		068-082	Loader Wheel	Hyundai HL757-7	3	HED Hetauda
180	35		068-083	Loader Wheel	Hyundai HL757-7	3	MO Bharatpur
181	36		068-084	Loader Wheel	Hyundai HL757-7	3	HED Kathmandu
182	37		068-085	Loader Wheel	Hyundai HL757-7	3	HED Kathmandu
183	38		068-086	Loader Wheel	Hyundai HL757-7	3	HED Butwal
184	39		068-087	Loader Wheel	Hyundai HL757-7	3	HED Nepalgunj
185	40		068-088	Loader Wheel	Hyundai HL757-7	3	HED Godavari
186	41		068-101	Loader Wheel	Komatsu WA100-1	17	MO Dang
187	42		068-103	Loader Wheel	Komatsu WA100-1	17	HED Hetauda
188	43		068-104	Loader Wheel	Komatsu WA100-1	17	HED Hetauda
189	1		070-001	Loader Backhoe	JCB.3CX-4	19	HED Kathmandu
190	2		070-002	Loader Backhoe	JCB.3CX-4	19	HED Kathmandu
191	3		070-003	Loader Backhoe	JCB 3CX-4	19	HED Nepalgunj
192	4		070-004	Loader Backhoe	JCB 3CX-4	19	HED Itahari
193	5		070-006	Loader Backhoe	JCB 3CX-4	19	MO Kathmandu
194	6		070-009	Loader Backhoe	JCB.3CX-4	12	HED Kathmandu
195	7		070-011	Loader Backhoe	JCB 3CX-4	12	HED Butwal
196	8		070-013	Loader Backhoe	JCB 3CX-4	9	HED Nepalgunj
197	9		070-101	Loader Backhoe	TCM 815	17	HED Hetauda
198	1		086-001	Pile Driver	Sumitomo- LS7808	24	HED Kathmandu
199	1		094-	Roller 3Wheel	Kawasaki	15	MO Lahan
200	2		094-	Roller 3Wheel	Chinese	17	MO Lahan
201	3		094-028	Roller 3Wheel	Sakai KD 7606	34	HED Hetauda
202	4		094-031	Roller 3Wheel	Sakai KD 7606	34	HED Butwal
203	5		094-033	Roller 3Wheel	Sakai KD 7606	34	HED Butwal
204	6		094-034	Roller 3Wheel	Sakai KD 7606	34	HED Kathmandu
205	7		094-037	Roller 3Wheel	Mc Donald, NC Series	32	HED Kathmandu
206	8		094-046	Roller 3Wheel	Mc Donald, NC Series	32	HED Nepalgunj
207	9		094-049	Roller 3Wheel	Kawasaki KMRH12	15	MO Janakpur
208	10		094-050	Roller 3Wheel	Kawasaki KMRH12	15	HED Butwal
209	11		094-050	Roller 3Wheel	Kawasaki KMRH12	15	MO Surkhet
210	12		094-052	Roller 3Wheel	Kawasaki KMRH12	15	MO Bharatpur
211	13		094-055	Roller 3Wheel	Kawasaki KMRH12	15	MO Pokhara
212	14		094-059	Roller 3Wheel	Kawasaki KMRH12	15	HED Hetauda
213	15		094-060	Roller 3Wheel	Kawasaki KMRH12	15	MO Pokhara
214	16		094-061	Roller 3Wheel	Kawasaki KMRH12	15	HED Nepalgunj
215	17		094-062	Roller 3Wheel	Kawasaki KMRH12	15	HED Butwal
216	18		094-063	Roller 3Wheel	Kawasaki KMRH12	15	MO Dang

Sr. No.	Sr. No. by Type of M/C	Regd. No.	Dept. No.	M/C Description	Make Model	Age in Yrs	Office
217	19		094-065	Roller 3Wheel	Sakai KD7608D	27	MO Birtamord
218	20		094-067	Roller 3Wheel	Sakai KD7608D	27	HED Itahari
219	21		094-069	Roller 3Wheel	Sakai KD7608D	27	MO Lahan
220	22		094-070	Roller 3Wheel	Sakai KD7606	25	HED Hetauda
221	23		094-071	Roller 3Wheel	Sakai KD7606	25	HED Kathmandu
222	24		094-072	Roller 3Wheel	Sakai KD7606	25	MO Kathmandu
223	25		094-073	Roller 3Wheel	Sakai KD7606	25	HED Hetauda
224	26		094-074	Roller 3Wheel	Kawasaki KMRH12	24	MO Dang
225	27		094-075	Roller 3Wheel	Kawasaki KMRH12	24	MO Bharatpur
226	28		094-084	Roller 3Wheel	Albaret TR 10	22	HED Kathmandu
227	29		094-	Roller 3Wheel	Albaret TR 10	22	HED Kathmandu
228	30		094-089	Roller 3Wheel	Aveling Barford DC012	19	MO Janakpur
229	31		094-091	Roller 3Wheel	Aveling Barford DC012	19	HED Butwal
230	32		094-093	Roller 3Wheel	Aveling Barford DC012	19	HED Butwal
231	33		094-094	Roller 3Wheel	Aveling Barford DC012	19	HED Itahari
232	34		094-095	Roller 3Wheel	Kawasaki KMRH-12D	24	HED Hetauda
233	35		094-096	Roller 3Wheel	Kawasaki KMRH-12D	24	HED Hetauda
234	36		094-106	Roller 3Wheel	Speed Craft DRR10S	14	MO Lahan
235	37		094-107	Roller 3Wheel	Speed Craft DRR10S	14	MO Janakpur
236	38		094-108	Roller 3Wheel	Speed Craft DRR10S	14	MO Janakpur
237	39		094-109	Roller 3Wheel	Speed Craft DRR10S	14	MO Bharatpur
238	40		094-110	Roller 3Wheel	Speed Craft DRR10S	14	MO Kathmandu
239	41		094-111	Roller 3Wheel	Speed Craft DRR10S	14	HED Kathmandu
240	42		094-112	Roller 3Wheel	Speed Craft DRR10S	14	MO Kathmandu
241	43		094-113	Roller 3Wheel	Speed Craft DRR10S	14	MO Pokhara
242	44		094-114	Roller 3Wheel	Speed Craft DRR10S	14	MO Pokhara
243	45		094-116	Roller 3Wheel	Speed Craft DRR10S	14	HED Godavari
244	46		094-117	Roller 3Wheel	Speed Craft DRR10S	14	HED Itahari
245	47		094-119	Roller 3Wheel	Speed Craft DRR10S	14	MO Pokhara
246	48		094-120	Roller 3Wheel	Speed Craft DRR10S	14	HED Nepalgunj
247	49		094-122	Roller 3Wheel	Johs Moller/Romba	12	HED Kathmandu
248	50		094-123	Roller 3Wheel	Johs Moller/Romba	12	MO Kathmandu
249	51		094-124	Roller 3Wheel	Aveling Barford DC011	16	HED Butwal
250	52		094-125	Roller 3Wheel	Aveling Barford DC12	12	HED Godavari
251	53		094-126	Roller 3Wheel	Aveling Barford DC12	12	MO Budar
252	1		096-0	Roller Pneumatic	Hamm GRW10	9	HED Itahari
253	2		096-002	Roller Pneumatic	Sakai TS 7409	34	HED Kathmandu
254	3		096-003	Roller Pneumatic	Sakai TS 7409	34	HED Hetauda
255	4		096-005	Roller Pneumatic	Sakai TS 7409	34	HED Godavari
256	5		096-008	Roller Pneumatic	Sakai TS 7409	26	HED Hetauda
257	6		096-010	Roller Pneumatic	Sakai TS 7409	26	MO Pokhara
258	7		096-016	Roller Pneumatic	Stavostroj VP200	9	HED Godavari
259	8		096-017	Roller Pneumatic	Stavostroj VP200	9	HED Kathmandu
260	9		096-018	Roller Pneumatic	Stavostroj VP200	9	HED Hetauda

Sr. No.	Sr. No. by Type of M/C	Regd. No.	Dept. No.	M/C Description	Make Model	Age in Yrs	Office
261	10		096-019	Roller Pneumatic	Stavostroj VP200	9	HED Butwal
262	11		096-020	Roller Pneumatic	Stavostroj VP200	9	HED Nepalgunj
263	12		096-021	Roller Pneumatic	Stavostroj VP200	9	HED Itahari
264	13		096-022	Roller Pneumatic	Hamm GRW10	9	MO Budar
265	14		096-023	Roller Pneumatic	Hamm GRW10	9	HED Itahari
266	1		098-	Roller Ped.Vib	Benford	8	HED Kathmandu
267	2		098-070	Roller Ped.Vib	Mortimer CPM 71	9	HED Kathmandu
268	3		098-076	Roller Ped.Vib	Mortimer CPM 71	9	MO Dang
269	4		098-077	Roller Ped.Vib	Benford	8	MO Janakpur
270	5		098-079	Roller Ped.Vib	Benford	8	MO Pokhara
271	6		098-081	Roller Ped.Vib	Bomag BW71E	8	HED Kathmandu
272	7		098-082	Roller Ped.Vib	Bomag BW71E	8	HED Kathmandu
273	8		098-083	Roller Ped.Vib	Bomag BW71E	8	HED Godavari
274	9		098-084	Roller Ped.Vib	Bomag BW 71E	8	MO Pokhara
275	10		098-085	Roller Ped.Vib	Bomag BW 55E	12	HED Nepalgunj
276	11		098-087	Roller Ped.Vib	Bomag BW 55E	12	MO Pokhara
277	12		098-088	Roller Ped.Vib	Bomag BW 55E	12	HED Kathmandu
278	13		098-092	Roller Ped.Vib	Bomag BW 71E	7	HED Kathmandu
279	14		098-093	Roller Ped.Vib	Bomag BW 71E	7	HED Butwal
280	15		098-095	Roller Ped.Vib	Bomag BW 71E	7	MO Birtamord
281	16		098-097	Roller Ped.Vib	Bomag BW 71E	6	MO Surkhet
282	17		098-098	Roller Ped.Vib	Bomag BW 71E	6	HED Kathmandu
283	18		098-099	Roller Ped.Vib	Bomag BW71E-2	5	MO Lahan
284	19		098-100	Roller Ped.Vib	Bomag BW71E-2	5	HED Nepalgunj
285	20		098-101	Roller Ped.Vib	Bomag BW71E-2	5	HED Nepalgunj
286	21		098-102	Roller Ped.Vib	Bomag BW71E-2	5	HED Butwal
287	22		098-103	Roller Ped.Vib	Bomag BW71E-2	8	HED Kathmandu
288	23		098-104	Roller Ped.Vib	Bomag BW71E-2	8	HED Kathmandu
289	24		098-105	Roller Ped.Vib	Bomag BW71E-2	8	HED Kathmandu
290	25		098-106	Roller Ped.Vib	Bomag BW71E-2	8	HED Kathmandu
291	26		098-107	Roller Ped.Vib	Bomag BW71E-2	3	MO Pokhara
292	27		098-108	Roller Ped.Vib	Bomag BW71E-2	3	HED Butwal
293	1		101-	Roller Vib. Self	Sakai	19	MO Birtamord
294	2		101-007	Roller Vib. Self	Bomag BW172-D2	13	HED Itahari
295	3		101-008	Roller Vib. Self	Bomag BW172-D2	13	HED Kathmandu
296	4		101-009	Roller Vib. Self	Johs Moller VT21	12	MO Kathmandu
297	5		101-010	Roller Vib. Self	Johs Moller VT21	12	MO Kathmandu
298	6		101-011	Roller Vib. Self	Johs Moller VT21	12	HED Butwal
299	7		101-012	Roller Vib. Self	Johs Moller VT21	12	HED Kathmandu
300	8		101-013	Roller Vib. Self	Johs Moller VT21	12	HED Kathmandu
301	9		101-015	Roller Vib. Self	Bomag BW172-D2	11	HED Butwal
302	10		101-016	Roller Vib. Self	L/Turbo W1104	13	HED Itahari
303	11		101-020	Roller Vib. Self	Aveling Barford VXC111	17	HED Butwal

Sr. No.	Sr. No. by Type of M/C	Regd. No.	Dept. No.	M/C Description	Make Model	Age in Yrs	Office
304	12		101-022	Roller Vib. Self	Dynapac VR-2CG11	17	MO Pokhara
305	1	PHU 69-01	109-001	Spreader Chip Self Prop.	Phoenix	17	HED Butwal
306	1	Ba.A. Ga 1235	114-	Truck Crane Mounted	Tata	13	HED Nepalgunj
307	2	Na.1.Ka.513	114-	Truck Crane Mounted	Tata SE1210B	13	HED Godavari
308	3	Bhe.1.Ga.54	114-001	Truck Crane Mounted	Isuzu HTR	19	HED Nepalgunj
309	4	Ba.1.Ga.1077	114-002	Truck Crane Mounted	Isuzu HTR	19	HED Kathmandu
310	5	Na.1.Ga.362	114-003	Truck Crane Mounted	Isuzu HTR	19	HED Hetauda
311	6	Lu.1.Ga.51	114-004	Truck Crane Mounted	Isuzu HTR	19	HED Butwal
312	7	Ko.1.Ga.33	114-005	Truck Crane Mounted	Isuzu HTR	19	HED Itahari
313	8	Ba.1.Ga.1084	114-006	Truck Crane Mounted	Isuzu HTR	19	MO Kathmandu
314	9	Ja.1.Ga.301	114-010	Truck Crane Mounted	Dong Feng	8	MO Janakpur
315	10	Ga.1.Ga.122	114-011	Truck Crane Mounted	Dong Feng	8	MO Pokhara
316	11	Ko.1.Ga.75	114-012	Truck Crane Mounted	Tata 1210 SE	15	MO Birtamord
317	1	Ba.1.Ga.1090	115-	Truck flatbed	Isuzu TXD	29	HED Kathmandu
318	2	Ja.1. Ga 229	115-	Truck flatbed	Isuzu	19	MO Bharatpur
319	3	Me.1.Ga.17	115-	Truck flatbed	Ashok Leyland	17	MO Birtamord
320	4	Bhe.1.Ga.67	115-058	Truck flatbed	Isuzu TXD	29	HED Nepalgunj
321	5	Ja.1.Ga.167	115-073	Truck flatbed	Hino EH700	18	MO Janakpur
322	6	Na.1.Ga.356	115-077	Truck flatbed	Isuzu HTR	19	HED Hetauda
323	7	Ba.1.Ga.1076	115-078	Truck flatbed	Isuzu HTR	19	HED Kathmandu
324	8	Lu.1.Ga.52	115-079	Truck flatbed	Isuzu HTR	19	HED Butwal
325	9	Ko.1.Ga.32	115-080	Truck flatbed	Isuzu HTR	19	HED Itahari
326	10	Ba.1.Ga.1130	115-081	Truck flatbed	Isuzu HTR	19	HED Kathmandu
327	11	Ba.1.Ga.1131	115-083	Truck flatbed	Isuzu HTR	19	HED Godavari
328	1	Ba.1.Ga.1220	116-	Truck Tipper	Tata	19	HED Kathmandu
329	2	Se.1 Ga 39	116-	Truck Tipper	Ashok Leyland	19	MO Birtamord
330	3	Ko.1.Ga. 71	116-	Truck Tipper	Tata	19	MO Lahan
331	4	Ba.1.Ka. 572	116-	Truck Tipper	Tata SE1210B	19	HED Hetauda
332	5	Ja.1.Ga.125	116-	Truck Tipper	Isuzu TXD	19	MO Janakpur
333	6	Ra1 Ga 2	116-	Truck Tipper	Ashok Leyland	19	MO Dang
334	7	Se.1.Ga.52	116-	Truck Tipper	Ashok Leyland	19	MO Budar
335	8	Na.1.Ga.420	116-	Truck Tipper	Ashok Leyland	19	MO Budar
336	9	Na.1.Ga.245	116-130	Truck Tipper	Isuzu TXD 40	28	MO Dang
337	10	Na.1.Ga.249	116-133	Truck Tipper	Isuzu TXD 40	28	HED Hetauda
338	11	Na.A.Ga.250	116-135	Truck Tipper	Isuzu TXD 40	28	MO Dang
339	12	Na.1.Ga.248	116-136	Truck Tipper	Isuzu TXD 40	28	HED Hetauda
340	13	Na.A.Ga.251	116-136	Truck Tipper	Isuzu TXD 40	28	MO Dang
341	14	Bhe.1.Ga.66	116-140	Truck Tipper	Isuzu TXD 40	28	HED Nepalgunj
342	15	Na.A.Ga.247	116-140	Truck Tipper	Isuzu TXD 40	28	MO Surkhet
343	16	Sa. 1.Ga.19	116-141	Truck Tipper	Isuzu SBR322	26	HED Itahari
344	17	Sa.1. Ga 8	116-144	Truck Tipper	Isuzu SBR322	26	MO Lahan

Sr. No.	Sr. No. by Type of M/C	Regd. No.	Dept. No.	M/C Description	Make Model	Age in Yrs	Office
345	18	Sa.1. Ga 31	116-150	Truck Tipper	Isuzu SBR322	26	MO Lahan
346	19	Sa.1. Ga 15	116-152	Truck Tipper	Isuzu SBR322	26	MO Lahan
347	20	Sa.A.Ga.12	116-153	Truck Tipper	Isuzu SBR322	26	MO Dang
348	21	Se.1.Ga.16	116-155	Truck Tipper	Isuzu SBR322	26	HED Kathmandu
349	22	Me.1.Ga.1	116-156	Truck Tipper	Isuzu SBR322	25	MO Birtamord
350	23	Ja.1.Ga.124	116-160	Truck Tipper	Isuzu SBR322	25	MO Janakpur
351	24	Ja.1.Ga.123	116-161	Truck Tipper	Isuzu SBR322	25	MO Janakpur
352	25	Na.1.Ga.304	116-162	Truck Tipper	Isuzu SBR322	25	HED Hetauda
353	26	Na.1.Ga.306	116-163	Truck Tipper	Isuzu SBR322	25	HED Hetauda
354	27	Na.A.Ga.308	116-165	Truck Tipper	Isuzu SBR322	25	HED Butwal
355	28	Na.A.Ga.300	116-166	Truck Tipper	Isuzu SBR322	25	HED Butwal
356	29	Na.1.Ga.305	116-174	Truck Tipper	Isuzu SBR322	25	HED Hetauda
357	30	Na.1.Ga.289	116-176	Truck Tipper	Isuzu SBR322	25	HED Hetauda
358	31	Na.A.Ga.292	116-179	Truck Tipper	Isuzu SBR322	25	HED Butwal
359	32	Na.1. Ga 312	116-183	Truck Tipper	Isuzu SBR322	25	MO Bharatpur
360	33	Na.1.Ga.270	116-184	Truck Tipper	Isuzu SBR322	25	MO Kathmandu
361	34	Na.1.Ga.272	116-186	Truck Tipper	Isuzu SBR322	25	HED Hetauda
362	35	Na.1.Ga.274	116-188	Truck Tipper	Isuzu SBR322	25	HED Kathmandu
363	36	Bhe.A.Ga.8	116-191	Truck Tipper	Isuzu SBR322	25	MO Surkhet
364	37	Bhe.1.Ga.7	116-192	Truck Tipper	Isuzu SBR322	25	HED Nepalgunj
365	38	Na.A.Ga.275	116-195	Truck Tipper	Isuzu SBR322	25	HED Butwal
366	39	Na.1.Ga 275	116-195	Truck Tipper	Isuzu SBR322	25	MO Pokhara
367	40	Na.1.Ga.302	116-198	Truck Tipper	Isuzu SBR322	25	HED Hetauda
368	41	Ba.1. Ga 628	116-204	Truck Tipper	Isuzu SBR322	25	MO Bharatpur
369	42	Ba.1.Ga.629	116-205	Truck Tipper	Isuzu SBR322	25	MO Dang
370	43	Ba.1.Ga.622	116-208	Truck Tipper	Isuzu SBR322	25	HED Kathmandu
371	44	Ba.1.Ga 633	116-210	Truck Tipper	Isuzu SBR322	25	MO Pokhara
372	45	Se.1.Ga.29	116-	Truck Tipper	Isuzu SBR322	25	HED Godavari
373	46	Ba.1.Ga.619	116-212	Truck Tipper	Isuzu SBR322	25	MO Kathmandu
374	47	Ba.1.Ga. 631	116-214	Truck Tipper	Isuzu SBR322	25	HED Kathmandu
375	48	Ba.1.Ga.621	116-215	Truck Tipper	Isuzu SBR322	25	MO Kathmandu
376	49	Na.1. Ga 291	116-216	Truck Tipper	Isuzu SBR322	25	MO Bharatpur
377	50	Ba.1.Ga 620	116-216	Truck Tipper	Isuzu SBR322	25	MO Pokhara
378	51	Ba.1.Ga 625	116-217	Truck Tipper	Isuzu SBR322	25	HED Kathmandu
379	52	Ba.1.Ga.617	116-218	Truck Tipper	Isuzu SBR322	25	MO Kathmandu
380	53	Ba.1.Ga.623	116-220	Truck Tipper	Isuzu SBR322	25	HED Kathmandu
381	54	Ja.1.Ga.166	116-223	Truck Tipper	Hino KR-120	24	MO Janakpur
382	55	Ja.1.Ga.172	116-224	Truck Tipper	Hino KR-120	24	MO Janakpur
383	56	Bhe.1.Ga.72	116-226	Truck Tipper	Hino KR120	24	HED Nepalgunj
384	57	Lu.1.Ga.55	116-230	Truck Tipper	Isuzu HTR	19	HED Hetauda
385	58	Lu.1.Ga.57	116-233	Truck Tipper	Isuzu HTR	19	HED Butwal
386	59	Lu.1.Ga.54	116-234	Truck Tipper	Isuzu HTR	19	MO Pokhara
387	60	Ba.1.Ga.1083	116-236	Truck Tipper	Isuzu HTR	19	MO Kathmandu
388	61	Na.1.Ga.426	116-250	Truck Tipper	Ashok Leyland	14	HED Hetauda

Sr. No.	Sr. No. by Type of M/C	Regd. No.	Dept. No.	M/C Description	Make Model	Age in Yrs	Office
389	62	Ba.A.Ga. 1180	116-252	Truck Tipper	Ashok Leyland	14	HED Butwal
390	63	Ba.1.Ga.1179	116-254	Truck Tipper	Ashok Leyland	14	MO Kathmandu
391	64	Bhe.1.Ga.69	116-255	Truck Tipper	Ashok Leyland	14	HED Nepalgunj
392	65	Ko.1 Ga 44	116-262	Truck Tipper	Ashok Leyland ALCO3	13	HED Itahari
393	66	Ko.1.Ga.45	116-263	Truck Tipper	Ashok Leyland ALCO3	13	HED Itahari
394	67	Ko.1.Ga.46	116-264	Truck Tipper	Ashok Leyland ALCO3	13	HED Itahari
395	68	Ko.1.Ga.47	116-265	Truck Tipper	Ashok Leyland ALCO3	13	HED Itahari
396	69	Lu.A.Ga.66	116-266	Truck Tipper	Ashok Leyland ALCO3	13	HED Butwal
397	70	Ba.1.Ga.1283	116 -274	Truck Tipper	Tata SE1612	12	HED Kathmandu
398	71	Bhe.1.Ga.71	116-275	Truck Tipper	Nissan CKB 451	11	HED Nepalgunj
399	72	Bhe.1.Ga.70	116-276	Truck Tipper	Nissan CKB 450	11	HED Nepalgunj
400	73	Ko.1.Ga.48	116-277	Truck Tipper	Ashok Leyland ALCO3	10	MO Birtamord
401	74	Ko.1.Ga. 49	116-278	Truck Tipper	Ashok Leyland ALCO3	10	MO Lahan
402	75	Ko.1.Ga. 50	116-279	Truck Tipper	Ashok Leyland ALCO3	10	MO Bharatpur
403	76	Ko.1.Ga.51	116-280	Truck Tipper	Ashok Leyland ALCO3	10	HED Hetauda
404	77	Ba.1.Ga.1501	116-??	Truck Tipper	Al Comet 3/3	10	HED Kathmandu
405	78	Ko.1.Ga.53	116-282	Truck Tipper	Ashok Leyland ALCO3	10	MO Kathmandu
406	79	Ko.A.Ga.54	116-283	Truck Tipper	Ashok Leyland ALCO3	10	HED Butwal
407	80	K.1.Ga.55	116-284	Truck Tipper	Ashok Leyland ALCO3	10	MO Pokhara
408	81	Ko A 56	116-285	Truck Tipper	Ashok Leyland ALCO3	10	MO Dang
409	82	Ko.A.Ga.57	116-286	Truck Tipper	Ashok Leyland ALCO3	10	HED Butwal
410	83	Ko.1.Ga.59	116-288	Truck Tipper	Ashok Leyland ALCO3	10	HED Godavari
411	84	Ba.1.Ka. 1511	116-291	Truck Tipper	Isuzu TDJ	19	HED Godavari
412	85	Ba.1.Ka. 1512	116-292	Truck Tipper	Isuzu TDJ	19	HED Godavari
413	86	Ba.1.Ka. 1517	116-293	Truck Tipper	Isuzu TDJ	19	HED Godavari
414	87	Ba1 Ga 1263	116-294	Mini Truck	Tata 608	12	MO Bharatpur
415	88	Ko.1.Ga.74	116-295	Truck Tipper	Tata 1210 SE	15	HED Itahari
416	89	Ko.1.Ga.73	116-296	Truck Tipper	Tata 1210 SE	15	HED Itahari
417	90	Ko.1.Ga.82	116-297	Truck Tipper	Tata 1210 SK	15	HED Itahari
418	91	Ko.1.Ga.81	116-298	Truck Tipper	Tata 1210 SK	15	HED Itahari
419	92	Ko.1.Ga.72	116-299	Truck Tipper	Tata 1210 SK	15	HED Itahari
420	93	Ko.1.Ga.70	116-301	Truck Tipper	Tata 1210 SK	15	HED Itahari
421	94	Ko.1.Ga.69	116-302	Truck Tipper	Tata 1210 SK	15	HED Itahari
422	95	Ba.A.Ka. 2224	116-303	Truck Tipper	Tata 1210B	17	HED Butwal
423	96	Ba.A.2227	116-304	Truck Tipper	Tata 1210B	17	HED Butwal
424	97	Na.A.Ka.675	116-306	Truck Tipper	Tata 1210B	17	HED Butwal
425	98	Na.A.Ka.677	116-308	Truck Tipper	Tata 1210B	17	HED Butwal
426	99	Na.A.Ka.512	116-309	Truck Tipper	Tata 1210B	17	HED Butwal
427	100	Ba. A. 2223	116-310	Truck Tipper	Tata 1210B	17	HED Nepalgunj
428	101	Ba. A. 2226	116-311	Truck Tipper	Tata 1210B	17	HED Nepalgunj
429	102	Ba.1.Ka. 1486	116-313	Truck Tipper	Isuzu	19	HED Itahari
430	103	Se.1 Ga 43	116-314	Truck Tipper	Ashok Leyland	19	MO Birtamord
431	104	Ba.1.Ka. 2225	116-315	Truck Tipper	Tata 1210B	17	MO Budar
432	105	Ba.1.Ka. 2228	116-316	Truck Tipper	Tata 1210B	17	MO Budar

Sr. No.	Sr. No. by Type of M/C	Regd. No.	Dept. No.	M/C Description	Make Model	Age in Yrs	Office
433	106	Se.1.Ga.40	116-317	Truck Tipper	Ashok Leyland	19	HED Godavari
434	107	Se.1.Ga.41	116-318	Truck Tipper	Ashok Leyland	19	HED Godavari
435	108	Se.1.Ga.42	116-319	Truck Tipper	Ashok Leyland	19	HED Godavari
436	1	Ba.1.Ga.1237	117-004	Mini Truck	Mahindra Nissan	13	HED Kathmandu
437	2	Sa.1. Ga 105	117-005	Mini Truck	Mahindra Mahindra	10	MO Lahan
438	3	Ma 1 Ga 12	117-006	Mini Truck	Mahindra Mahindra	10	HED Godavari
439	4	Ra1 Ga 3	117-009	Mini Truck	Mahindra Mahindra	10	MO Dang
440	5	Ba.1.Ga.1481	117-011	Mini Truck	Tata / 407	11	HED Kathmandu
441	6	Ba.A.Ka. 2349	117-012	Mini Truck	Mitsubishi Canter	17	HED Butwal
442	7	Ba. A. 2348	117-013	Mini Truck	Mitsubishi Eich Cant	17	HED Nepalgunj
443	8	Ko.1.Ga.63	117-014	Mini Truck	Mahindra Mahindra	13	MO Birtamord
444	9	Ba.1Ga1889	117-017	Mini Truck	Tata / 407	11	HED Kathmandu
445	10	Ba.1.Ka. 1580	117-018	Mini Truck	Isuzu	19	HED Godavari
446	1	Na.1.Da. 1524	118-004	Tractor Trailer	Mitsubishi FV415H	18	HED Hetauda
447	2	Na.1.Da 1527	118-006	Tractor Trailer	Mitsubishi FV415H	18	HED Kathmandu
448	3	Na.1.Da. 1526	118-007	Tractor Trailer	Mitsubishi FV415H	18	HED Itahari
449	4	Lu.1.Ga.74	118-009	Tractor Trailer	Mitsubishi FV515H	8	HED Butwal
450	5	Bhe.1.Ga.65	118-010	Tractor Trailer	Mitsubishi FV515H	8	HED Nepalgunj
451	6	Ko1 Ka278	118-011	Tractor Trailer	Foden 4350	15	HED Godavari
452	7	Na.1.Ga. 446	118-013	Tractor Trailer	Isuzu CXZ817	3	HED Hetauda
453	8	Na.1.Ga.447	118-014	Tractor Trailer	Isuzu CXZ817	3	HED Godavari
454	9	Ja.1.Ga. 236	118-101	Tractor Trailer	Hino HE335	17	MO Pokhara
455	1	Na.A.Ga.241	119-013	Tanker Water	Isuzu TXD 50	28	MO Surkhet
456	2	Ja1Ga 237	119-021`	Tanker Water	Isuzu TXD 50	26	MO Bharatpur
457	3	Ba.1.Ga 638	119-022	Tanker Water	Isuzu TXD 50	26	HED Kathmandu
458	4	Na.1.Ga 242	119-023	Tanker Water	Isuzu TXD 50	26	HED Kathmandu
459	5	Bhe.A.Ga.43	119-027	Tanker Water	Isuzu SBR 372	25	MO Dang
460	6	Ja.1.Ga.228	119-028	Tanker Water	Isuzu HTR	19	HED Hetauda
461	7		119-029	Tanker Water	Isuzu HTR	19	MO Lahan
462	8	Bhe.1.Ga.51	119-030	Tanker Water	Isuzu HTR	19	HED Nepalgunj
463	9	Ba.1.Ga 1129	119-031	Tanker Water	Isuzu HTR	19	HED Kathmandu
464	10	Ba.1.Ga.1157	119-032	Tanker Water	Isuzu HTR	19	HED Kathmandu
465	11	Ba.1.Ga 1162	119-033	Tanker Water	Isuzu HTR	19	HED Kathmandu
466	12	Lu.1.Ga.53	119-034	Tanker Water	Isuzu HTR	19	HED Butwal
467	13	Ga.1.Ga.100	119-035	Tanker Water	Isuzu HTR	19	MO Pokhara
468	14	Se.1.Ga.46	119-036	Tanker Water	AL / Comet	17	HED Kathmandu
469	15	Lu.1.Ga.70	119-037	Tanker Water	Ashok Leyland	9	HED Butwal
470	16	Se.1.Ga.54	119-039	Tanker Water	Ashok Leyland	9	HED Godavari
471	17	60-0-168	119-040	Tanker Water	Tata 1210SE/48	15	MO Janakpur
472	18	Ko1 Ga80	119-041	Tanker Water	Tata 1210SE/48	15	HED Itahari
473	19	Ko.1.Ga.68	119-042	Tanker Water	Tata 1210SE/48	15	MO Birtamord
474	1	Ba.A.Da. 54	123-021	Agricultural Tractor	Ford 3610	12	HED Butwal
475	2	Ba.1Da 51	123-022	Agricultural Tractor	Ford 3610	12	MO Lahan
476	3	Na1 Da143	123-	Agricultural Tractor	Ford 3610	12	MO Bharatpur

Sr. No.	Sr. No. by Type of M/C	Regd. No.	Dept. No.	M/C Description	Make Model	Age in Yrs	Office
477	4	Lu1 Da 52	123-	Agricultural Tractor	Ford 3610	12	MO Bharatpur
478	5	Bhe.1.Da.32	123-023	Agricultural Tractor	Ford 3610	12	HED Nepalgunj
479	6	Ba1Da 53	123-024	Agricultural Tractor	Ford 3610	12	MO Pokhara
480	7	Ba.A.Da. 55	123-025	Agricultural Tractor	Mahindra 575	11	HED Butwal
481	8	Ba.1.Da.5?	123-026	Agricultural Tractor	Mahindra 575	11	HED Nepalgunj
482	9		123-027	Agricultural Tractor	Mahindra 575	11	MO Dang
483	10	Ba.A.Da. 56	123-028	Agricultural Tractor	Mahindra 575	11	HED Butwal
484	11	Ja.1 Da 86	123-030	Agricultural Tractor	Escort E355N	10	MO Janakpur
485	12	Ja.1 Da 95	123-031	Agricultural Tractor	Escort E355N	10	MO Janakpur
486	13	Sa.1Da 14	123-0??	Agricultural Tractor	Escort E355N	10	MO Lahan
487	14		123-036	Agricultural Tractor	Escort E355N	10	MO Pokhara
488	15		123-039	Agricultural Tractor	Escort E355N	10	MO Dang
489	16	Ga.1.Da.219	123-040	Agricultural Tractor	Hindustan G453DI	9	MO Pokhara
490	17	Ga.1.Da.220	123-041	Agricultural Tractor	Hindustan G453DI	9	MO Pokhara
491	18		123-044	Agricultural Tractor	Hindustan G453DI	8	HED Kathmandu
492	19		123-046	Agricultural Tractor	Hindustan G453DI	8	HED Kathmandu
493	20	Lu.1.Da.48	123-052	Agricultural Tractor	HMT 4511	7	HED Kathmandu
494	21		123-053	Agricultural Tractor	HMT 4511	7	MO Surkhet
495	22	Lu.1.Da.46	123-053	Agricultural Tractor	HMT 4511	7	HED Butwal
496	23	Lu.1.Da.45	123-054	Agricultural Tractor	HMT 4511	7	HED Butwal
497	24		123-056	Agricultural Tractor	HMT 4511	7	HED Kathmandu
498	25		123-057	Agricultural Tractor	HMT 4511	7	HED Kathmandu
499	26	Me.1 Da 12	123-058	Agricultural Tractor	M & M	7	MO Birtamord
500	27	53-0-38	123-062	Agricultural Tractor	MF245	5	HED Nepalgunj
501	28		123-064	Agricultural Tractor	Sonalika	4	MO Dang
502	29	Lu.1.Da.62	123-065	Agricultural Tractor	Sonalika	4	HED Butwal
503	30	Lu.1.Da.64	123-066	Agricultural Tractor	Sonalika	4	HED Butwal
504	31	Bhe.1da 36	123-067	Agricultural Tractor	Sonalika	4	MO Surkhet
505	32	Lu 1 Da 61	123-068	Agricultural Tractor	HMT4511	4	HED Godavari
506	33	Lu 1 Da 59	123-069	Agricultural Tractor	HMT4511	4	HED Godavari
507	34	Lu1 Da 60	123-070	Agricultural Tractor	HMT4511	3	MO Bharatpur
508	35	Sa.1Da 14	123-0??	Agricultural Tractor	Escort	10	MO Lahan
509	1		138-033	Plate Compactor	Mikasa	19	MO Pokhara
510	2		138-035	Plate Compactor	Mikasa	19	MO Kathmandu
511	3		138-037	Plate Compactor	Mikasa	19	MO Kathmandu
512	1	Ra. A . Ga 1	147-004	Mobile Workshop	Tata	19	MO Dang

ANNEX-2

VEHICLE LIST

Sr. No.	Regd No.	Description	Make	Model	Manufactured Year (As per Blue Book)	Condition		Odometer Reading	Office	Remarks
						Running				
						Reliable	Unreliable			
1	Ba.3.Cha. 2993	Jeep	Toyota	Prado	1998	√		162524	DOR Babarmahal	DG Office
2	Ba.1.Jha. 3047	Car	Toyota	Tercel	1987		√	169830	DOR Babarmahal	DG Office
3	Ba.1.Jha. 6932	Car	Toyota	Corolla	1996	√		56884	DOR Babarmahal	DDG Mechanical Branch
4	Na.1.Jha. 381	Double cab Pickup	Toyota	Hilux LN65	1988		√	263612	DOR Babarmahal	Mechanical Branch
5	Ba.1.Jha. 2687	Jeep	Mitsubishi	Pajero L044	1987		√	211955	DOR Babarmahal	Mechanical Branch
6	Ba.3.Cha. 9535	Jeep	Isuzu	Trooper	2001	√		85675	DOR Babarmahal	DDG Maintenance Branch
7	Ba.1.Jha. 5993	Jeep	Landrover	110	1989		√	183300	DOR Babarmahal	Maintenance Branch
8	Ba.3.Cha. 9537	Jeep	Isuzu	Trooper	2001	√		101325	DOR Babarmahal	DDG Planning and Design Branch
9	Ba.1.Jha. 3100	Jeep	Mitsubishi	Pajero	1987		√	316765	DOR Babarmahal	PMEU
10	Ba.1.Jha. 4732	Jeep	Mitsubishi	Pajero	1997	√		221448	DOR Babarmahal	GESU
11	Ba.1.Jha. 3178	Jeep	Mitsubishi	Pajero	1989	√		164118	DOR Babarmahal	Bridge Unit
12	Ba.1.Jha. 3177	Jeep	Mitsubishi	Pajero	1992	√		157583	DOR Babarmahal	TESU
13	Ba.1.Jha. 5327	Car	Toyota		1994	√		113822	DOR Babarmahal	RSSDU
14	Ba.2.Cha. 9398	Doublecab Pickup	Nissan	D21	1996		√	178456	DOR Babarmahal	HMIS
15	Ba.1.Jha. 4347	Singlecab Pickup	Mitsubishi		1994	√		105000	DOR Babarmahal	Bridge Unit
16	Ba.1.Jha. 5991	Car	Ford		1992		√	49396 mile	DOR Babarmahal	IT Coordination Unit

Sr. No.	Regd No.	Description	Make	Model	Manufactured Year (As per Blue Book)	Condition		Odometer Reading	Office	Remarks
						Running				
						Reliable	Unreliable			
17	Ba.3.Cha. 9533	Jeep	Isuzu	Trooper	2001	√		88550	DOR Babarmahal	DDG Foreign Cooperation Branch
18	Ba.2.Cha. 9400	Doublecab Pickup	Nissan		1996	√		128294	DOR Babarmahal	Foreign Cooperation Branch
19	Ba.1.Jha. 5344	Jeep	Toyota	Landcruiser	1995	√		117520	DOR Babarmahal	Foreign Cooperation Branch
20	Ba.3.Cha. 9534	Jeep	Isuzu	Trooper	2001	√		124513	DOR Babarmahal	RMDP
21	Ba.1.Jha. 5367	Car	Toyota	Corolla	1993	√		175316	DOR Babarmahal	RMDP
22	Ba.1.Jha. 6713	Car	Toyota		1993	√		129100	DOR Babarmahal	RMDP
23	Ba.1.Jha. 3567	Car	Toyota	Corolla	1992	√		161205	DOR Babarmahal	RMDP
24	Ba.1.Jha. 5688	Jeep	Maruti	Gypsy	1993		√	77229	DOR Babarmahal	RMDP
25	Ba.1.Jha. 5684	Jeep	Tata	Safari	2000		√	84684	DOR Babarmahal	Admin Section
26	Ba.1.Jha. 5366	Car	Toyota	Corolla	1993	√		161138	DOR Babarmahal	Finance Section
27	Ba.1.Jha. 4840	Doublecab Pickup	Toyota	Hilux LN106	1996	√		148604	Central Lab	
28	Ba.1.Jha. 4274	Singlecab Pickup	Mitsubishi		1994	√		109441	Central Lab	
29	Ba.1.Jha. 4273	Jeep	Mitsubishi	Pajero	1987		√	246909	MTC	
30	Ba.1.Jha. 5098	Singlecab Pickup	Isuzu	TFS54	1996	√		112414	MTC	
31	Me.1.Jha. 70	Jeep	Toyota	Prado	1998	√		270275	Eastern Regional Directorate	
32	Se.1.Jha. 79	Singlecab Pickup	Nissan		1996		√	265019	DRO Illam	
33	Me.1.Jha. 77	Doublecab Pickup	Toyota	Hilux	2000	√		0	DRO Illam	
34	Na.1.Jha. 368	Doublecab Pickup	Toyota	Hilux LN65	1988		√	452809	DRO Damak	

Sr. No.	Regd No.	Description	Make	Model	Manufactured Year (As per Blue Book)	Condition		Odometer Reading	Office	Remarks
						Running				
						Reliable	Unreliable			
35	Ko.1.Jha. 182	Singlecab Pickup	Mitsubishi		1994	√		248147	DRO Dhanakuta	
36	Ko.1.Jha. 187	Doublecab Pickup	Toyota	Hilux	1988		√	0	DRO Dhanakuta	
37	Ko.1.Jha. 232	Singlecab Pickup	Mitsubishi		1994	√		269415	DRO Biratnagar	
38	Me.1.Jha. 144	Jeep	Toyota	Landcruiser	0		√	0	DRO Biratnagar	
39	Ba.1.Jha. 5736	Doublecab Pickup	Nissan		1996	√		0	DRO Biratnagar	
40	Ba.1.Jha. 4384	Singlecab Pickup	Tata	Mobile	1995		√	186510	DRO Lahan	
41	Na.1.Jha. 379	Doublecab Pickup	Toyota	Hilux LN65	1988		√	400632	DRO Lahan	
42	Ba.1.Jha. 5139	Doublecab Pickup	Mitsubishi		1997	√		244266	DRO Lahan	
43	Ba.1.Jha. 5342	Jeep	Isuzu	Trooper	1996		√	235516	DRO Lahan	
44	Ba..3.Cha 645	Doublecab Pickup	Isuzu	TFS 54H	1997	√		203473	HED Itahari	
45	Na.1.Jha. 363	Doublecab Pickup	Toyota	Hilux LN65	1988		√	385027	HED Itahari	
46	Me.1.Jha. 62	Singlecab Pickup	Mitsubishi	K24TUNSR	1994	√		306439	MO Birtamod	
47	Ba.1.Jha. 2586	Jeep	Toyota	BJ 70	1985		√	380885	MO Lahan	
48	Ba.1.Jha. 5306	Jeep	Toyota	Prado	1995	√		179566	Central Regional Directorate	
49	Ba.1.Jha. 4981	Jeep	Mitsubishi	Pajero	1992		√	312636	Central Regional Directorate	
50	Ja.1.Jha. 303	Doublecab Pickup	Toyota	Hilux LN106	1996	√		458000	DRO Janakpur	
51	Ba..3.Cha 641	Doublecab Pickup	Isuzu	TFS 54	1997	√		210000	DRO Janakpur	
52	Ba.1.Jha. 3587	Jeep	Maruti	Gypsy	1992		√	60073	DRO Janakpur	

Sr. No.	Regd No.	Description	Make	Model	Manufactured Year (As per Blue Book)	Condition		Odometer Reading	Office	Remarks
						Running				
						Reliable	Unreliable			
53	Ba.1.Jha. 5142	Doublecab Pickup	Mitsubishi		1997	√		166212	DRO Hetauda	
54	Na.1.Jha. 473	Singlecab Pickup	Isuzu	TFS55	1998	√		217000	DRO Hetauda	
55	Ba.1.Jha. 5992	Jeep	Landrover	110	1989		√	326203	DRO Bharatpur	
56	Ba.2.Cha. 881	Jeep	Landrover	110	1986		√	550911	DRO Bharatpur	
57	Ba.1.Jha. 4827	Doublecab Pickup	Toyota	Hilux LN106	1996	√		270217	DRO Bharatpur	
58	Ba.1.Jha. 6723	Jeep	Landrover	Discovery	1995	√		266156	DRO Bharatpur	
59	Ba.2.Cha. 6924	Jeep	Toyota	Prado	1997	√		103000	DRO Kathmandu	
60	Ba.1.Jha. 5762	Doublecab pickup	Nissan		1996		√	42510	DRO Kathmandu	
61	Ba.1.Cha. 297	Jeep	Mitsubishi	Pajero	1992	√		305600	DRO Kathmandu	
62	Ba.1.Jha. 5937	Jeep	Mitsubishi	Pajero	1992	√		263955	DRO Kathmandu	
63	Ba.1.Jha. 3585	Jeep	Maruti	Gypsy	1992		√	47000	DRO Kathmandu	
64	Ba.1.Jha. 3530	Jeep	Maruti	Gypsy	1992		√	19000	DRO Kathmandu	
65	Ba.4.Cha. 9287	Singlecab Pickup	Isuzu	TFS54	1996	√		227045	DRO Kathmandu	
66	Se.1.Jha. 80	Jeep	Toyota	Prado	1995		√	300000	DRO Kathmandu	
67	Ba.2.Cha. 2714	Jeep	Mitsubishi	Pajero	1992	√		321000	DRO Kathmandu	
68	Ba.4.Cha. 9288	Doublecab Pickup	Mazda	B2500	2001	√		104600	DRO Kathmandu	
69	Ba.1.Jha. 5807	Doublecab Pickup	Nissan		1996	√		225654	DRO Lalitpur	
70	Ba.1.Jha. 3612	Jeep	Mitsubishi	V14VNDR	1992		√	NW	DRO Lalitpur	
71	Ba.1.Jha. 1262	Singlecab Pickup	Tata	Mobile	1994		√	246822	DRO Lalitpur	
72	Ba.1.Jha. 6721	DoublecabPickup	Landrover	Discovery	1995	√		246820	DRO Lalitpur	

Sr. No.	Regd No.	Description	Make	Model	Manufactured Year (As per Blue Book)	Condition		Odometer Reading	Office	Remarks
						Running				
						Reliable	Unreliable			
73	Ba.1.Jha. 2592	Singlecab Pickup	Toyota	Landcruiser	1985		√	0	DRO Lalitpur	
74	Ba.1.Jha. 3098	Jeep	Mitsubishi	Pajero L049	1987	√		340814	DRO Bhaktapur	
75	Ba.1.Jha. 5233	Singlecab Pickup	Isuzu	TFS55	1998	√		160199	DRO Bhaktapur	
76	Ba.1.Jha. 5763	Jeep	Toyota	Landcruiser BJ75	1980		√	277458	DRO Bhaktapur	
77	Ba.1.Jha. 5850	Jeep	Toyota	Landcruiser BJ75	1980		√	346710	DRO Bhaktapur	
78	Ba.1.Jha. 4784	Doublecab Pickup	Toyota	Hilux LN106	1996	√		230728	DRO Nuwakot	
79	Ba.1.Jha. 5576	Singlecab Pickup	Isuzu	TFS55	1999	√		200858	DRO Nuwakot	
80	Ga.1.Jha. 161	Jeep	Mitsubishi	Pajero	1987	√		259568	DRO Nuwakot	
81	Ba.1.Jha. 4855	Singlecab Pickup	Mitsubishi	L200	1998	√		205592	DRO Charikot	
82	Ba.1.Jha. 2593	Singlecab Pickup	Toyota	Landcruiser	1985		√	180313	DRO Charikot	
83	Ba.1.Jha. 4038	Jeep	Toyota	Landcruiser BJ75	1980		√	310874	DRO Charikot	
84	Na.1.Jha. 364	Doublecab Pickup	Toyota	Hilux LN65	1988		√	420657	HED Hetauda	
85	Ba.1.Jha. 4382	Singlecab Pickup	Tata	Mobile 207	1995		√	NW	HED Hetauda	
86	Ba.1.Jha. 4743	Doublecab Pickup	Toyota	Hilux LN106	1996	√		138582	HED Kathmandu	
87	Ba.1.Jha. 4980	Jeep	Mitsubishi	Pajero	1992		√	241741	HED Kathmandu	
88	Ba.2.Cha. 9886	Jeep	Armada		1993		√	1387	HED Kathmandu	
89	Ba.1.Jha. 453	Singlecab Pickup	Isuzu	TFS55	1998	√		127644	HED Kathmandu	
90	Na.1.Jha. 371	Doublecab Pickup	Toyota	Hilux LN65	1988		√	407047	MO Janakpur	
91	Ba.1.Jha. 5231	Jeep	Isuzu	Trooper	1987	√		163587	MO Bharatpur	
92	Ba.1.Jha. 1733	Singlecab Pickup	Isuzu	KBD41	1982		√	282960	MO Bharatpur	

Sr. No.	Regd No.	Description	Make	Model	Manufactured Year (As per Blue Book)	Condition		Odometer Reading	Office	Remarks
						Running				
						Reliable	Unreliable			
93	Ba.2.Cha. 9391	Jeep	Isuzu	Trooper	1987		√	249834	MO Kathmandu	
94	Ba.1.Jha. 5728	Doublecab Pickup	Isuzu	KBD	1987	√		199514	MO Kathmandu	
95	Ba.1.Jha. 7235	Jeep	Toyota	Prado	2000	√		84171	Western Regional Directorate	
96	Ba.1.Jha. 6542	Doublecab Pickup	Mazda	B2500	2001	√		53922	DRO Palpa	
97	Ba.1.Jha. 4978	Doublecab Pickup	Toyota	Hilux LN106	1996		√	213883	DRO Palpa	
98	Ba.1.Jha. 4386	Singlecab Pickup	Tata	Mobile	1995		√	72300	DRO Butwal	
99	Na.1.Jha. 374	Doublecab Pickup	Toyota	Hilux LN65	1988		√	558287	DRO Butwal	
100	Na.1.Jha. 378	Doublecab Pickup	Toyota	Hilux LN65	1988		√	533401	DRO Butwal	
101	Ba.1.Jha. 5683	Doublecab Pickup	Mitsubishi	K34TUNSR	1994	√		269688	DRO Butwal	
102	Ba.1.Jha. 6019	Doublecab Pickup	Isuzu	TFS 54H	1997	√		255607	DRO Shivapur	
103	Ba.1.Jha. 4828	Doublecab Pickup	Toyota	Hilux LN106	1996	√		209826	DRO Shivapur	
104	Ba.1.Jha. 6934	Jeep	Toyota	Landcruiser	1992	√		231290	DRO Shivapur	
105	Ba.1.Jha. 4385	Singlecab Pickup	Tata	Mobile	1995		√	65390	DRO Pokhara	
106	Na.1.Jha. 375	Doublecab Pickup	Toyota	Hilux LN65	1988		√	430912	DRO Pokhara	
107	Ga.1.Jha. 4	Jeep	Mitsubishi	Pajero	1988		√	309219	DRO Pokhara	
108	Ba.1.Jha. 5685	Jeep	Maruti	Gypsy	1993		√	53288	DRO Pokhara	
109	Ba.1.Jha. 5128	Jeep	Nissan	YBD21	1996	√		64991	DRO Pokhara	
110	Ga.1.Jha. 217	Singlecab Pickup	Isuzu	TFS 55H	1998		√	201699	DRO Damauli	

Sr. No.	Regd No.	Description	Make	Model	Manufactured Year (As per Blue Book)	Condition		Odometer Reading	Office	Remarks
						Running				
						Reliable	Unreliable			
111	Ba.1.Jha. 5452	Singlecab Pickup	Nissan		1996	√		226613	DRO Damauli	
112	Na.1.Jha. 367	Doublecab Pickup	Toyota	Hilux LN65	1988		√	396499	HED Butwal	
113	Na.1.Jha. 83	Singlecab Pickup	Isuzu	KBD 40	1982		√	379318	HED Butwal	
114	Ba.1.Jha. 1377	Jeep	Toyota	BJ40	1979		√	209499	HED Butwal	
115	Na.1.Jha. 383	Doublecab Pickup	Toyota	Hilux LN65	1988		√	350297	MO Pokhara	
116	Ga.1.Jha. 229	Jeep	Landrover	110	1986		√	349588	MO Pokhara	
117	Bhe.1.Jha. 153	Jeep	Toyota	Prado	1997	√		156000	Mid Western Regional Directorate	
118	Ba.1.Jha. 5645	Doublecab Pickup	Mitsubishi	L200	1993		√	NW	DRO Pyuthan	
119	Ga.1.Jha. 211	Jeep	Toyota	Prado	1997	√		189000	DRO Pyuthan	
120	Ba.1.Jha. 5138	Doublecab Pickup	Mitsubishi		1997	√		159847	DRO Nepalgunj	
121	Ba.1.Jha. 3609	Jeep	Mitsubishi	Pajero	1997	√		210213	DRO Nepalgunj	
122	Ba.1.Jha. 6541	Doublecab Pickup	Mazda	B2500	2001	√		87192	DRO Surkhet	
123	Bhe.1.Jha. 145	Singlecab Pickup	Mitsubishi	K24 TNSR	1994		√	NW	DRO Surkhet	
124	Na.1.Jha. 382	Doublecab Pickup	Toyota	Hilux LN65	1988		√	NW	DRO Dang	
125	Ba.1.Jha. 5698	Doublecab Pickup	Toyota		1998	√		175580	DRO Dang	
126	Bhe.1.Jha. 120	Doublecab Pickup	Toyota	Hilux LN65	1988		√	272588	HED Nepalgunj	
127	Ba.1.Jha. 2589	Singlecab Pickup	Toyota	Landcruiser	1985		√	218892	HED Nepalgunj	
128	Ba.A.Yan. 260	Doublecab Pickup	Toyota	Hilux LN106			√	94988	MO Surkhet	

Sr. No.	Regd No.	Description	Make	Model	Manufactured Year (As per Blue Book)	Condition		Odometer Reading	Office	Remarks	
						Running					
						Reliable	Unreliable				
129	Ba.1.Jha. 3611	Jeep	Mitsubishi	Pajero	1992	√		253640	MO Dang		
130	Ba.1.Jha. 5734	Jeep	Toyota	Prado	1997	√		126300	Far Western Regional Directorate		
131	Na.1.Jha. 451	Singlecab Pickup	Isuzu	TFS 54F	1996	√		157966	DRO Baitadi		
132	Ba.1.Jha. 2994	Doublecab Pickup	Mitsubishi		1994	√		351661	DRO Baitadi		
133	Ba.1.Jha. 5938	Jeep	Mitsubishi	Pajero	1992	√		253560	DRO Baitadi		
134	Ma.1.Jha. 66	Singlecab Pickup	Isuzu	TFS 55H	1998	√		178700	DRO Doti		
135	Ma.1.Jha. 69	Singlecab Pickup	Isuzu		1998	√		169762	DRO Doti		
136	Ba.1.Jha. 6077	Doublecab Pickup	Isuzu		1997	√		200228	DRO Mahendranagar		
137	Se.1.Jha. 163	Singlecab Pickup	Nissan		1996	√		nw	DRO Mahendranagar		
138	Na.1.Jha. 377	Doublecab Pickup	Toyota	Hilux	1988		√	382400	HED Godawari		
139	Ra.1.Jha. 45	Singlecab Pickup	Mitsubishi	l200	1994	√		152789	HED Godawari		
140	Ba.1.Jha. 3408	Jeep	Toyota	BJ70	1988		√	224446	MO Budar		
	Note	Vehicles of Projects, Vehicles waiting for repair for long time and Vehicles used by Ministry and Other Agencies for long period has not been included									

ANNEX-3 A

Budget and Expenditure FY 2063/64
Budget Heading 48-3-150

Sr.No.	Office	Budget Amount	Released Amount	Total Expenditure	Remarks
1	HED Itahari	8803400	8413335.26	8413335.26	
2	HED Hetauda	12306700	11021992.74	11021992.74	
4	HED Kathmandu	12918900	12427127.2	12427127.2	
3	HED Butwal	8994000	8849254.16	8849254.16	
5	HED Nepalgunj	6972100	6519721.7	6519721.7	
6	HED Godavari	6992000	6456051.3	6456051.3	
1	MO Birtamod	3222100	3184879.95	3184879.95	
2	MO Lhan	3981900	3560608.9	3560608.9	
3	MO Janakpur	3687500	3606045.54	3606045.54	
4	MO Bharatpur	2632100	2470080.5	2470080.5	
5	MO Kathmandu	4604100	4402414.92	4402414.92	
6	MO Pokhara	4026100	3357259.88	3357259.88	
7	MO Dang	3025100	2559109.97	2559109.97	
8	MO Surkhet	2065100	1988476.76	1988476.76	
9	MO Budar	2433100	2117992.3	2117992.3	
	Unallocated	3710800			
	Total	90375000	80934351.08	80934351.08	

ANNEX-3 B

Budget and Expenditure FY 2063/64
Budget Heading 48-4-670

(Rs. in Thousand)

Sr. No.	Office	Work Activities	Budget Amount (Rs.)	Released Amount (Rs.)	Total Expenditure (Rs.)	Remarks
---------	--------	-----------------	---------------------	-----------------------	-------------------------	---------

Mechanical Branch

1	Mechanical Branch	Spare Parts Procurement	4700		4568.892	
		HEDs & MOs inspection visits	100		45.251	
		Logistics Expenses for Auction	200		89.693	
		Sub-Total	5000	5000	4703.836	

Heavy Equipment Divisions

1	HED Itahari	Heavy Equipment Maintenance & Operation 1586 Hrs	835		793.2	
		Medium Equipment Maintenance & Operation 1571 Hrs	275		261.3	
		Light Vehicle Maintenance & Operation 22000 Km	110		104.5	
		Low Bed Trailer & Truck Maintenance & Operation (HeavyEqpt.Transportation) 356 Hrs	80		76	
		Administrative Expenditure			65	As Contingency
		Sub-Total	1300	1300	1300	
2	HED Hetauda	Heavy Equipment Maintenance & Operation 1111 Hrs	500		500	
		Medium Equipment Maintenance & Operation 4800 Hrs	840		840	
		Light Vehicle Maintenance & Operation 42000 Km	210		210	
		Low Bed Trailer & Truck Maintenance & Operation (HeavyEqpt.Transportation) 444 Hrs	100		100	
		Sub-Total	1650	1650	1650	
3	HED Kathmandu	Heavy Equipment Maintenance & Operation 1111 Hrs	440		440	
		Medium Equipment Maintenance & Operation 4800 Hrs	560		560	
		Light Vehicle Maintenance & Operation 42000 Km	1380		1380	
		Low Bed Trailer & Truck Maintenance & Operation (HeavyEqpt.Transportation) 444 Hrs	120		120	
		Sub-Total	2500	2500	2500	
4	HED Butwal	Heavy Equipment Maintenance & Operation 1556 Hrs	700		700	
		Medium Equipment Maintenance & Operation 3286 Hrs	575		575	

(Rs. in Thousand)

Sr. No.	Office	Work Activities	Budget Amount (Rs.)	Released Amount (Rs.)	Total Expenditure (Rs.)	Remarks
		Light Vehicle Maintenance & Operation 40000 Km	200		200	
		Low Bed Trailer & Truck Maintenance & Operation (HeavyEqpt. Transporation) 333 Hrs	75		75	
		Back Log Job Costing Data Entry	100		100	
		Sub-Total	1650	1650	1650	
5	HED Nepalgunj	Heavy Equipment Maintenance & Operation 1022 Hrs	460		460	
		Medium Equipment Maintenance & Operation 2286 Hrs	400		400	
		Light Vehicle Maintenance & Operation 28000 Km	140		140	
		Low Bed Trailer & Truck Maintenance & Operation (HeavyEqpt. Transporation) 444 Hrs	100		100	
		Sub-Total	1100	1100	1100	
6	HED Godavari	Heavy Equipment Maintenance & Operation 1000 Hrs	450		450	
		Medium Equipment Maintenance & Operation 2286 Hrs	400		400	
		Light Vehicle Maintenance & Operation 30000 Km	150		150	
		Low Bed Trailer & Truck Maintenance & Operation (HeavyEqpt. Transporation) 444 Hrs	100		100	
		Sub-Total	1100	1100	1100	
Sub-Total of HEDs			9300	9300	9300	

Mechanical Offices

1	MO Birtamod	Heavy Equipment Maintenance & Operation 111 Hrs	50		50	
		Medium Equipment Maintenance & Operation 886 Hrs	155		155	
		Light Vehicle Maintenance & Operation 9000 Km	45		45	
		Sub-Total	250	250	250	
2	MO Lahan	Heavy Equipment Maintenance & Operation 111 Hrs	75		75	
		Medium Equipment Maintenance & Operation 886 Hrs	130		130	
		Light Vehicle Maintenance & Operation 9000 Km	45		45	
		Sub-Total	250	250	250	
3	MO Janakpur	Heavy Equipment Maintenance & Operation 111 Hrs	85		85	
		Medium Equipment Maintenance & Operation 886 Hrs	125		125	

(Rs. in Thousand)

Sr. No.	Office	Work Activities	Budget Amount (Rs.)	Released Amount (Rs.)	Total Expenditure (Rs.)	Remarks
		Light Vehicle Maintenance & Operation 9000 Km	40		40	
		Sub-Total	250	250	250	
4	MO Bharatpur	Heavy Equipment Maintenance & Operation 89 Hrs	40		40	
		Medium Equipment Maintenance & Operation 943 Hrs	165		165	
		Light Vehicle Maintenance & Operation 9000 Km	45		45	
		Sub-Total	250	250	250	
5	MO Kathmandu	Heavy Equipment Maintenance & Operation 111 Hrs	50		50	
		Medium Equipment Maintenance & Operation 1657 Hrs	290		290	
		Light Vehicle Maintenance & Operation 12000 Km	60		60	
		Sub-Total	400	400	400	
6	MO Pokhara	Heavy Equipment Maintenance & Operation 556 Hrs	250		250	
		Medium Equipment Maintenance & Operation 1429 Hrs	250		250	
		Light Vehicle Maintenance & Operation 10000 Km	50		50	
		Sub-Total	550	550	550	
7	MO Dang	Heavy Equipment Maintenance & Operation 389 Hrs	175		175	
		Medium Equipment Maintenance & Operation 800 Hrs	140		139.91	
		Light Vehicle Maintenance & Operation 7000 Km	35		35	
		Sub-Total	350	350	349.91	
8	MO Surkhet	Heavy Equipment Maintenance & Operation 144 Hrs	65		64.96	
		Medium Equipment Maintenance & Operation 571 Hrs	100		99.68	
		Light Vehicle Maintenance & Operation 7000 Km	35		34.99	
		Sub-Total	200	200	199.63	
9	MO Budar	Heavy Equipment Maintenance & Operation 144 Hrs	65		64.8	
		Medium Equipment Maintenance & Operation 571 Hrs	100		100	
		Light Vehicle Maintenance & Operation 7000 Km	35		35	
		Sub-Total	200	200	199.8	
Sub-Total of MOs			2700	2700	2699.34	Progress %
Total of MB, HEDs & MOs			17000	17000	16703.176	98.25

ANNEX-3C

Budget and Expenditure FY 2063/64
Budget Heading 48-4-555

Sr. No.	Office	Work Activities	Budget Amount (Rs.)	Released Amount (Rs.)	Total Expenditure (Rs.)	Remarks
1	Mechanical Branch	Spare parts and tyre tube purchase	3000		2928.898	
		EPABX tel sys repair & maintenance	200		190.239	
		Duty and other taxes payment for vehicle registration to be transferred within DOR	300		187.56	
		Sub-Total	3500	3500	3306.697	

Heavy Equipment Divisions

(Rs. in Thousand)

Sr. No.	Office	Work Activities	Budget Amount (Rs.)	Released Amount (Rs.)	Total Expenditure (Rs.)	Remarks
1	HED Itahari	SMD Equipment Maintenance	300		285	Taken as contingency
		Heavy Equipment Rehabilitation	500		475	
		Light Vehicle Repair & Maintenance	350		332.5	
		Tire Tube Procurement & Resoling.	200		190	
		Administrative Expenditure			67.5	
		Sub-Total	1350	1350	1350	
2	HED Hetauda	SMD Equipment Maintenance	150		150	
		Heavy Equipment Rehabilitation	500		500	
		Light Vehicle Repair & Maintenance	175		175	
		Tire Tube Procurement & Resoling.	200		199	
		Workshop Repair and Works Improvement	800		798	
		Sub-Total	1825	1825	1822	
3	HED Kathmandu	SMD Equipment Maintenance	600		600	
		Heavy Equipment Rehabilitation	500		500	
		Light Vehicle Repair & Maintenance	1400		1400	
		Tire Tube Procurement & Resoling.	200		200	
		Sub-Total	2700	2700	2700	
4	HED Butwal	SMD Equipment Maintenance	450		450	
		Heavy Equipment Rehabilitation	500		500	
		Light Vehicle Repair & Maintenance	525		525	
		Tire Tube Procurement & Resoling.	200		200	
		Sub-Total	1675	1675	1675	
5	HED Nepalgunj	SMD Equipment Maintenance	150		150	
		Heavy Equipment Rehabilitation	300		300	
		Light Vehicle Repair & Maintenance	175		175	
		Tire Tube Procurement & Resoling.	200		200	

(Rs. in Thousand)

Sr. No.	Office	Work Activities	Budget Amount (Rs.)	Released Amount (Rs.)	Total Expenditure (Rs.)	Remarks
6	HED Godawari	Workshop Repair and Works Improvement	200		200	
		Sub-Total	1025	1025	1025	
		SMD Equipment Maintenance	150		150	
		Heavy Equipment Rehabilitation	300		300	
		Light Vehicle Repair & Maintenance	175		175	
		Tire Tube Procurement & Resoling.	200		200	
		Sub-Total	825	825	825	
		Total of HEDs	9400	9400	9397	

Mechanical Offices

1	MO Birtamod	SMD Equipment Maintenance	300		300	
		Heavy Equipment Rehabilitation	100		100	
		Light Vehicle Repair & Maintenance	350		350	
		Tire Tube Procurement & Resoling.	100		100	
		Workshop Repair and Works Improvement	700		699.27	
		Sub-Total	1550	1550	1549.27	
2	MO Lahan	SMD Equipment Maintenance	150		150	
		Heavy Equipment Rehabilitation	100		100	
		Light Vehicle Repair & Maintenance	175		175	
		Tire Tube Procurement & Resoling.	100		100	
		Sub-Total	525	525	525	
3	MO Janakpur	SMD Equipment Maintenance	150		150	
		Heavy Equipment Rehabilitation	100		100	
		Light Vehicle Repair & Maintenance	175		175	
		Tire Tube Procurement & Resoling.	100		100	
		Workshop Repair and Works Improvement	100		99.6	
		Sub-Total	625	625	624.6	
4	MO Bharatpur	SMD Equipment Maintenance	150		150	
		Heavy Equipment Rehabilitation	100		100	
		Light Vehicle Repair & Maintenance	175		175	
		Tire Tube Procurement & Resoling.	100		100	
		Workshop Repair and Works Improvement	200		200	
		Sub-Total	725	725	725	
5	MO Kathmandu	SMD Equipment Maintenance	150		150	
		Heavy Equipment Rehabilitation	100		100	
		Light Vehicle Repair & Maintenance	175		175	
		Tire Tube Procurement & Resoling.	100		100	
		Sub-Total	525	525	525	

(Rs. in Thousand)

Sr. No.	Office	Work Activities	Budget Amount (Rs.)	Released Amount (Rs.)	Total Expenditure (Rs.)	Remarks
6	MO Pokhara	SMD Equipment Maintenance	300		300	
		Heavy Equipment Rehabilitation	100		100	
		Light Vehicle Repair & Maintenance	350		350	
		Tire Tube Procurement & Resoling.	100		100	
		Workshop Repair and Works Improvement	200		192.601	
		Sub-Total	1050	1042.6	1042.601	
7	MO Dang	SMD Equipment Maintenance	300		299.99	
		Heavy Equipment Rehabilitation	100		100	
		Light Vehicle Repair & Maintenance	350		350	
		Tire Tube Procurement & Resoling.	100		100	
		Sub-Total	850	850	849.99	
8	MO Surkhet	SMD Equipment Maintenance	150		149.94	
		Heavy Equipment Rehabilitation	100		99.45	
		Light Vehicle Repair & Maintenance	175		175	
		Tire Tube Procurement & Resoling.	100		99.88	
		Workshop Repair and Works Improvement	300		299.83	
		Sub-Total	825	824.1	824.1	
9	MO Budar	SMD Equipment Maintenance	150		150	
		Heavy Equipment Rehabilitation				
		Light Vehicle Repair & Maintenance	175		175	
		Tire Tube Procurement & Resoling.	100		100	
		Workshop Repair and Works Improvement				
		Administrative Expenditure				
		Sub-Total	425	425	425	
Sub Total of MOs			7100	7091.7	7090.561	Progress % 98.9713
Total of MB, HEDs & MOs			20000	19991.7	19794.258	

ANNEX-3D

Budget and Expenditure FY 2063/64
Budget Heading 48-4-695 (Road Board)

(Rs. in Thousand)

Sr. No.	Office	Work Activities	Budget Amount (Rs.)	Released Amount (Rs.)	Total Expenditure (Rs.)	Remarks
1	HED Itahari	Equipment maintenance for rainy season	350	350	350	
2	HED Hetauda	Equipment maintenance for rainy season	650	650	650	
4	HED Kathmandu	Equipment maintenance for rainy season	650	650	650	
3	HED Butwal	Equipment maintenance for rainy season	650	650	650	
5	HED Nepalgunj	Equipment maintenance for rainy season	350	350	350	
6	HED Godavari	Equipment maintenance for rainy season	350	350	350	
Total			3000	3000	3000	

ANNEX-3E

Budget and Expenditure FY 2063/64
Revolving Fund

(Rs. in Thousand)

Sr. No.	Office	Work Activities	Budget Amount (Rs.)	Released Amount (Rs.)	Total Expenditure (Rs.)	Remarks Progress %
---------	--------	-----------------	---------------------	-----------------------	-------------------------	--------------------

Mechanical Branch

1	MB	Spare Parts Procurement	6000		4534.541	
		Sub-Total	6000		4534.541	75.58

Heavy Equipment Divisions

1	HED Itahari	Rehabilitation- Heavy Equipment Repair-1unit	250		250	
		Heavy Equipment Maintenance & Operation 667 Hrs (Excluding fuel)	300		300	
		Medium Equipment Maintenance & Operation 792 Hrs (Excluding fuel)	138.655		138.655	
		Administrative Expenditure	36.245		36.245	
		Sub-Total	724.9	724.9	724.9	100
2	HED Hetauda	Rehabilitation- Machine Equipment Repair	288.325		288.325	
		Heavy Equipment Maintenance & Operation 116 Hrs (Excluding fuel)	144.466		144.466	
		Medium Equipment Maintenance & Operation 882 Hrs (Excluding fuel)	143.859		143.617	
		Administrative Expenditure	30.35		30.322	
		Sub-Total	607	607	606.73	99.96
3	HED Butwal	Rehabilitation-1)Cat Track Dozer RD#031-059 2) Holman Air Compressor RD#017-058	400		355.59	
		Running Maintenance-Heavy Equipment Repair & Maintenance 444 Hrs	200		200	
		Medium Equipment Repair & Maintenance 1046 Hrs	190		190	
		Administrative Expenditure	40		40	
		Sub-Total	830	830	785.59	94.65
4	HED Kathmandu	Rehabilitation-1 unit of Loader & 2 units of Roller	447		447	
		Repair & Maintenance-Heavy Equipment 223 Hrs	200		200	
		Repair & Maintenance-Medium Equipment 745 Hrs	260		260	
		Administrative Expenditure	48		48	
		Sub-Total	955	955	955	100
5	HED Nepalgunj	Rehabilitation- Machine Equipment Repair	158.65		158.65	
		Repair & Maintenance-Heavy Equipment 146 Hrs	158.65		158.65	
		Administrative Expenditure	16.7		16.7	
		Sub-Total	334	334	334	100
6	HED Godavari	Rehabilitation- RD#116- 319, Se1Ga42 AL Truck	232.75		232.75	
		Administrative Expenditure	12.25		12.25	
		Sub-Total	245	245	245	100

(Rs. in Thousand)

Sr. No.	Office	Work Activities	Budget Amount (Rs.)	Released Amount (Rs.)	Total Expenditure (Rs.)	Remarks Progress %
Sub-Total of all HEDs			3695.9	3695.9	3651.22	98.79

Mechanical Offices

1	MO Birtamod	Medium Equipment Maintenance & Operation 860 Hrs	150.1		150.1	
		Administrative Expenditure	7.9		7.86	
		Sub-Total	158	158	157.96	99.97
2	MO Lahan	Medium Equipment Maintenance & Operation 128 Hrs	21.66		21.66	
		Administrative Expenditure	1.14		1.14	
		Sub-Total	22.8	22.8	22.8	100
3	MO Janakpur	Medium Equipment Maintenance & Operation Hrs				
		Administrative Expenditure				
		Sub-Total	56.2	56.2	54.233	96.5
4	MO Bharatpur	Medium Equipment Maintenance & Operation Hrs				
		Administrative Expenditure				
		Sub-Total				
5	MO Kathmandu	Medium Equipment Maintenance & Operation 100 Hrs	45.6			
		Administrative Expenditure	2.4			
		Sub-Total	48	48	46.207	96.26
6	MO Pokhara	Rehabilitation- Equipment Repair 1 unit	115		115	
		Maintenance- Medium Equipment 121 Hrs	21.28		21.28	
		Administrative Expenditure	7.17		7.17	
		Sub-Total	143.45	143.45	143.45	100
7	MO Dang	Heavy Equipment Maintenance & Operation 97 Hrs	41.8		41.8	
		Administrative Expenditure	2.2		2.2	
		Sub-Total	44	44	44	100
8	MO Surkhet	Heavy Equipment Maintenance & Operation 147 Hrs	66.5		64.749	
		Administrative Expenditure	3.5		3.5	
		Sub-Total	70	70	68.249	97.50
9	MO Budar	Heavy Equipment Maintenance & Operation Hrs				
		Administrative Expenditure				
		Sub-Total				
Total of all MOs			542.45	542.45	536.899	98.98
TOTAL of MB, HED's & MO's			10238.4		8722.66	

ANNEX-3F

Summary of Budget and Expenditure for Repair and Maintenance FY 2063/64

Sr.No.	Office	48-3-150		48-4-670		48-4-555		48-4-695		Revolving Fund		Total	
		Budget	Expenditure	Budget	Expenditure	Budget	Expenditure	Budget	Expenditure	Budget	Expenditure	Budget	Expenditure
1	Mechanical Branch			5000.0	4703.8	3500.0	3306.7			6000.0	4534.5	14500.0	12545.1
2	HED Itahari	510	510.0	1300.0	1300.0	1350.0	1350.0	350.0	350.0	724.9	724.9	4234.9	4234.9
3	HED Hetauda	510	510.0	1650.0	1650.0	1825.0	1822.0	650.0	650.0	607.0	606.7	5242.0	5238.7
4	HED Kathmandu	600	600.0	2500.0	2500.0	2700.0	2700.0	650.0	650.0	830.0	785.6	7280.0	7235.6
5	HED Butwal	510	510.0	1650.0	1650.0	1675.0	1675.0	650.0	650.0	955.0	955.0	5440.0	5440.0
6	HED Nepalgunj	510	510.0	1100.0	1100.0	1025.0	1025.0	350.0	350.0	334.0	334.0	3319.0	3319.0
7	HED Godavari	500	500.0	1100.0	1100.0	825.0	825.0	350.0	350.0	245.0	245.0	3020.0	3020.0
8	MO Birtamod	240	240.0	250.0	250.0	1550.0	1549.3			158.0	158.0	2198.0	2197.2
9	MO Lhan	240	240.0	250.0	250.0	525.0	525.0			22.8	22.8	1037.8	1037.8
10	MO Janakpur	240	240.0	250.0	250.0	625.0	624.6			56.2	54.2	1171.2	1168.8
11	MO Bharatpur	240	240.0	250.0	250.0	725.0	725.0					1215.0	1215.0
12	MO Kathmandu	240	239.9	400.0	400.0	525.0	525.0			48.0	46.2	1213.0	1211.1
13	MO Pokhara	240	240.0	550.0	550.0	1050.0	1042.6			143.5	143.5	1983.5	1976.0
14	MO Dang	240	239.9	350.0	349.9	850.0	850.0			44.0	44.0	1484.0	1483.8
15	MO Surkhet	240	240.0	200.0	199.6	825.0	824.1			70.0	68.2	1335.0	1332.0
16	MO Budar	240	240.0	200.0	199.8	425.0	425.0					865.0	864.8
	Total	5300.0	5299.8	17000.0	16703.176	20000.0	19794.258	3000.0	3000.000	10238.4	8722.660	55538.350	53519.869

Annex-4

Spare Parts Procurement by Mechanical Branch in FY 2063/64

Sr.No.	Procured for: Office	Make	Equipment	Budget Head	LC No:	Opened on:	Total Items	FC Unit	CIF	Exchange Rate	LC Amount in NRs.	Status
1	HED Butwal	Phoenix Chipping	Spreader	48-4-670	OS 3928/63	15.11.2006	12	UK £	5,050.70	136.91	727,000	LC closed
2	HED Butwal	Champion Motor	Grader	48-4-670	OS 3930/63	20.11.2006	40	US \$	11,000.00	71.80	830,000	LC closed
3	HED Butwal	Bomag Vibrator	Roller	48-4-670	OS 3936/63	21.12.2006	62	€	10,732.13	92.72	1,045,000	LC closed
4	MO Dang	Furukawa	FL230-I,Loader	48-4-670	OS 3955/63	06.03.2007	22	¥	620,948	0.591	385,400	LC closed
5	HED Butwal	Daewoo Solar130LC	Excavator	48-4-670	OS3964/63	28.03.2007	5	US \$	5,906.07	71.05	441,000	LC closed
6	MO Dang	Furukawa	FL230-I,Loader	48-4-670	OS4017/63	28.06.2007	6	JPY	231,357	0.531	130,000	10% released
7	HED Butwal	Bomag BW172-D2	Vib. Roller	48-4-670	OS4016/63	28.06.2007	1	EUR	2,304.18	87.90	213000	LC Established
									Sub-Total		3,771,400	
8	HEDI/K/N	Kawasaki, 70ZIV,	Loader	48-4-555	OS 3959/63	14.03.2007	44	¥	1,015,000	0.605	645,000	LC closed
9	MO Dang	Komatsu D50A DZR	Komatsu WA100LDR	48-4-555	OS 3960/64	14.03.2007	40	US \$	12,262.24	71.12	916,000	LC closed
10	HED Kathmandu	Bomag Vibrator	Roller	48-4-555	OS3975/63	05.04.2007	18	EUR	6,558.85	92.67	639,000	10% released
									Sub-Total		2,200,000	
11	HED K, MO S	Kawasaki KLD70	Loader	KS	OS3974/63	05.04.2007	23	JPY	1,670,000	0.597	1,047,000	LC Closed
12	HEDK,HEDI	Champion 710,710R	Motor Grader	KS	OS3976/63	05.04.2007	23	USD	14,783.19	69.79	1,084,000	10% released
13	HED Kathmandu	Hitachi, EX200-3	Excavator	KS	OS4002/63	12.06.2007	17	USD	11,218.34	65.39	771,000	10% released
14	MO Pokhara	Kawasaki KLD-70	Loader	KS	OS4003/63	17.06.2007	10	JPY	944,000	0.538	534,000	Goods received
15	HED K/B	Champion	710R Grader	KS	OS4015/63	28.06.2007	4	USD	5,663.51	65.49	390,000	LC established
									Sub-Total		3,826,000	
									Total		9,797,400	

ANNEX-5

Utilization of Equipment between 500 - 1000 hours

Sr. No.	Dept.No.	M/C Description	Make Model	Office	Utilization
1	035-044	Mini Dumper	Sambron TS25M	MO Kathmandu	996
2	035-065	Mini Dumper	Jiangsu F15	MO Kathmandu	995
3	116-317	Truck Tipper	Ashok Leyland	HED Godavari	955
4	001-001	Asphalt Plant	Marshal	HED Kathmandu	925
5	031-074	Dozer Track	Komatsu D85SESS2A	HED Itahari	918
6	114-006	Truck Crane Mounted	Isuzu HTR	MO Kathmandu	906
7	116-215	Truck Tipper	Isuzu SBR322	MO Kathmandu	899
8	042-018	Excavator	Daewoo SL220 LC-V	HED Hetauda	884
9	035-061	Mini Dumper	Shaanxi F15	MO Kathmandu	854
10	062-004	Bitumin heater		HED Kathmandu	850
11	055-049	Grader Motor	Champion 710	HED Itahari	829
12	119-041	Tanker Water	Tata 1210SE/48	HED Itahari	824
13	035-089	Mini Dumper	Jaingsu F15	HED Kathmandu	805
14	042-021	Excavator	Daewoo SL220 LC-V	HED Nepalgunj	796
15	068-035	Loader Wheel	Kawasaki KSS70	HED Nepalgunj	782
16	035-088	Mini Dumper	Jinhou F15	HED Kathmandu	780
17	116-297	Truck Tipper	Tata 1210 SK	HED Itahari	774
18	035-069	Mini Dumper	Jiangsu F15	HED Kathmandu	763
19	035-095	Mini Dumper	Pengyuan FC1.5	HED Kathmandu	758
20	119-031	Tanker Water	Isuzu HTR	HED Kathmandu	750
21	068-086	Loader Wheel	Hyundai HL757-7	HED Butwal	743
22	119-033	Tanker Water	Isuzu HTR	HED Kathmandu	705
23	032-008	Bitumen Distributor	Isuzu Hanta DS50	HED Kathmandu	695
24	035-095	Mini Dumper	Pengyuan FC1.5	MO Kathmandu	679
25	031-075	Dozer Track	Komatsu D85SESS2A	HED Kathmandu	665
26	017-055	Air Compressor	Kirloskar	HED Hetauda	661
27	032-014	Bitumen Distributor	Bedford AWD B/F	HED Itahari	657
28	035-064	Mini Dumper	Jiangsu F15	MO Kathmandu	649
29	042-016	Excavator	Kobelco SK115SR	HED Hetauda	631
30	094-060	Roller 3Wheel	Kawasaki KMRH12	MO Pokhara	629
31	042-015	Excavator	Daewoo Solar 130	HED Butwal	616
32	035-093	Mini Dumper	Chancai FC1	HED Kathmandu	613
33	116-314	Truck Tipper	Ashok Leyland	MO Birtamod	605
34	032-007	Bitumen Distributor	Isuzu Hanta DS50	HED Hetauda	595
35	098-106	Roller Ped.Vib	Bomag BW71E-2	HED Kathmandu	593
36	101-016	Roller Vib. Self	L/Turbo W1104	HED Itahari	577

Sr. No.	Dept.No.	M/C Description	Make Model	Office	Utilization
37	119-042	Tanker Water	Tata 1210SE/48	MO Birtamod	574
38	116-288	Truck Tipper	Ashok Leyland ALCO3	HED Godavari	567
39		Truck Tipper		MO Birtamod	566
40	116-218	Truck Tipper	Isuzu SBR322	MO Kathmandu	558
41	068-066	Loader Wheel	Kawasaki 70ZIV	HED Itahari	555
42	119-032	Tanker Water	Isuzu HTR	HED Kathmandu	555
43	055-043	Mitsubishi Grader	MG 350R	MO Birtamod	554
44	116-277	Truck Tipper	Ashok Leyland ALCO3	MO Birtamod	552
45	094-050	Roller 3Wheel	Kawasaki KMRH12	MO Surkhet	548
46	068-063	Loader Wheel	Kawasaki 70ZIV	HED Godavari	545
47	031-070	Dozer Track	Cat D7G	HED Nepalgunj	540
48	068-085	Loader Wheel	Hyundai HL757-7	HED Kathmandu	537
49	068-081	Loader Wheel	Hyundai HL757-7	HED Itahari	535
50	055-051	Grader Motor	Champion 710	HED Butwal	529
51	068-080	Loader Wheel	Kawasaki 70ZIV	HED Hetauda	521

Annex-6

Theoretical Hire on Shift Basis of Fiscal Year 2063/64

(Rupees)

Sr. No.	Office		HED Itahari	HED Hetauda	HED Kathmandu	HED Butwal	HED Nepalgunj	HED Godavari	MO Birtamod	MO Lhan	MO Janakpur	MO Bharatpur	MO Kathmandu	MO Pokhara	MO Dang	MO Surkhet	Total
	EDRO 1	Illam	7228140						4997300								12225440
	EDRO 2	Damak	1868790						1741250								3610040
	EDRO 3	Biratnagar	13764950														13764950
	EDRO 4	Dhankuta	1426740														1426740
	EDRO 5	Lahan								823550							823550
	CDRO1	Charikot			8673220												8673220
	CDRO2	Kathmandu			4341250								6958770				11300020
	CDRO3	Lalitpur			9350860												9350860
	CDRO4	Bhaktapur			4195330												4195330
	CDRO5	Nuwakot			12118120												12118120
1	CDRO6	Bharatpur		8342215								3286500					11628715
2	CDRO7	Hetauda		5957630													5957630
3	CDRO8	Janakpur		5799780													5799780
4	WDRO 1	Damauli				96600								3243590			3340190
5	WDRO 2	Pokhara												1030120			1030120
6	WDRO 3	Papla				1771420								67620			1839040
7	WDRO 4	Butwal				8177680											8177680
8	WDRO 5	Shvapur				1647170											1647170
9	MWDRO 1	Devasthan					216384										216384
10	MWDRO 2	Dang				64260	2902620								2175880		5142760
11	MWDRO 3	Nepalgunj					3598210										3598210
12	MWDRO 4	Surkhet					1315510									4673340	5988850
13	FWDRO 1	Mahendranagar						1776960									1776960
14	FWDRO 2	Doti						4284700									4284700
15	FWDRO 3	Baitadi						163800									163800
16		Surkhet-Jumla					1006180									361900	1368080

(Rupees)

Sr. No.	Office	HED Itahari	HED Hetauda	HED Kathmandu	HED Butwal	HED Nepalgunj	HED Godavari	MO Birtamod	MO Lhan	MO Janakpur	MO Bharatpur	MO Kathmandu	MO Pokhara	MO Dang	MO Surkhet	Total
17	Baitadi-Darchula						535220									535220
18	Khodpe-Bajhang						9266740									9266740
19	GEU					16800										16800
20	Security Agency		172550		97580	1440350	1946980		130200							3787660
21	PLA Nepal				376950	777840										1154790
22	Kathmandu Metropolitan			4683000												4683000
	Total	24288620	20272175	43361780	12231660	11273894	17974400	6738550	953750	808290	3286500	6958770	4341330	2E+06	5035240	159700839

1506480 added in FWDRo1

4839310 added in WDRO 4

64260 added inDang

Annex-7

Income, Expenditure and Operating Profit / Loss of FY 2063/64

(Rupees in Thousand)

Sr.No.	Office	48-3-150	48-4-670	48-4-555	48-4-695	Revolving Fund	Total Expenditure	Theoretical Hire	Actual Hire Revenue	Gross Income	Profit	Loss
1	Mechanical Branch		4703.8	3306.7		4534.5	12545.074					12545.074
2	HED Itahari	8413.33526	1300.0	1350.0	350.0	724.9	12138.23526	24288.62	4215.927	28504.547	16366.3117	
3	HED Hetauda	11021.99274	1650.0	1822.0	650.0	606.7	15750.72274	20272.175	6404.804	26676.979	10926.2563	
4	HED Kathmandu	12427.1272	2500.0	2700.0	650.0	785.6	19062.7172	43361.78	8518.128	51879.908	32817.1908	
5	HED Butwal	8849.25416	1650.0	1675.0	650.0	955.0	13779.25416	12231.66	9138.025	21369.685	7590.43084	
6	HED Nepalgunj	6519.7217	1100.0	1025.0	350.0	334.0	9328.7217	11273.894	4464.678	15738.572	6409.8503	
7	HED Godavari	6456.0513	1100.0	825.0	350.0	245.0	8976.0513	17974.4	2041.055	20015.455	11039.4037	
8	MO Birtamod	3184.87995	250.0	1549.3		158.0	5142.10995	6738.55	987.19	7725.74	2583.63005	
9	MO Lhan	3560.6089	250.0	525.0		22.8	4358.4089	953.75	168.29	1122.04		3236.3689
10	MO Janakpur	3606.04554	250.0	624.6		54.2	4534.87854	808.29	323.94	1132.23		3402.64854
11	MO Bharatpur	2470.0805	250.0	725.0			3445.0805	3286.5	360.06	3646.56	201.4795	
12	MO Kathmandu	4402.41492	400.0	525.0		46.2	5373.62192	6958.77	435.57	7394.34	2020.71808	
13	MO Pokhara	3357.25988	550.0	1042.6		143.5	5093.31088	4341.33	2002.842	6344.172	1250.86112	
14	MO Dang	2559.10997	349.9	850.0		44.0	3803.00997	2175.88	1160.595	3336.475		466.53497
15	MO Surkhet	1988.47676	199.6	824.1		68.2	3080.45576	5035.24	856.34	5891.58	2811.12424	
16	MO Budar	2117.9923	199.8	425.0			2742.7923		90.16	90.16		2652.6323
	Total	80934.351	16703.176	19794.258	3000.000	8722.660	129154.445	159700.839	41167.604	200868.443	94017.257	22303.259
						Incentive	2645.659					

Total Expenditure	131800.104
Gross Income	200868.443
Operating Profit	69068.339

Annex-8

Auction of Equipment and Vehicles in FY 2063/64

S.No	Name of Equipment
	MO Pokhara
1	Isuzu tipper SBR RD No 116-181
2	Sayazi stone crusher 022-019
3	Rajdoot Motorcycle RD No 023-038
4	Rajdoot Motorcycle RD No 023-039
5	Rajdoot Motorcycle RD No 023-040
6	Rajdoot Motorcycle RD No 023-044
7	Rajdoot Motorcycle RD No 023-045
8	Rajdoot Motorcycle RD No 023-105
9	Lada Car Ga 1 Jha 3
10	Landrover Pick up Ba A Jha 5765
11	Three Wheel Steel Roller Jessop RD 094-022
12	Water Pump Kirlosker
13	Water Pump Kirlosker
14	Water Pump Kirlosker
15	Battery charger
16	3kVA electric generator
17	Distilled water plant
18	Concrete Vib Greves 6.5 hP
19	1/2 hP Water pump
20	1/2 hP Water pump