

**GOVERNMENT OF NEPAL
MINISTRY OF PHYSICAL INFRASTRUCTURE AND TRANSPORT
DEPARTMENT OF ROADS
HEAVY EQUIPEMNT DIVISION
POKHARA, KASKI**



**ANNUAL REPORT
(F/Y 2080-81)**

Table of Contents

1. Introduction.....	4
2. Organization Structure.....	4
3. Work Responsibilites.....	5
4. Active Equipment.....	5
5. Allocation of Equipment for this Rainy Season.....	6
6. Annual Utilization.....	7
7. Equipment Operation.....	7
8. Major Repair and Maintenance.....	8
9. Auction.....	9
10. Construction of Works.....	9

List of Symbols and Abbreviations:

DAO	District Administration Office
DDG	Deputy Director General
DG	Director General
DoR	Department of Roads
DRO	Division Road Office

Office Overview:

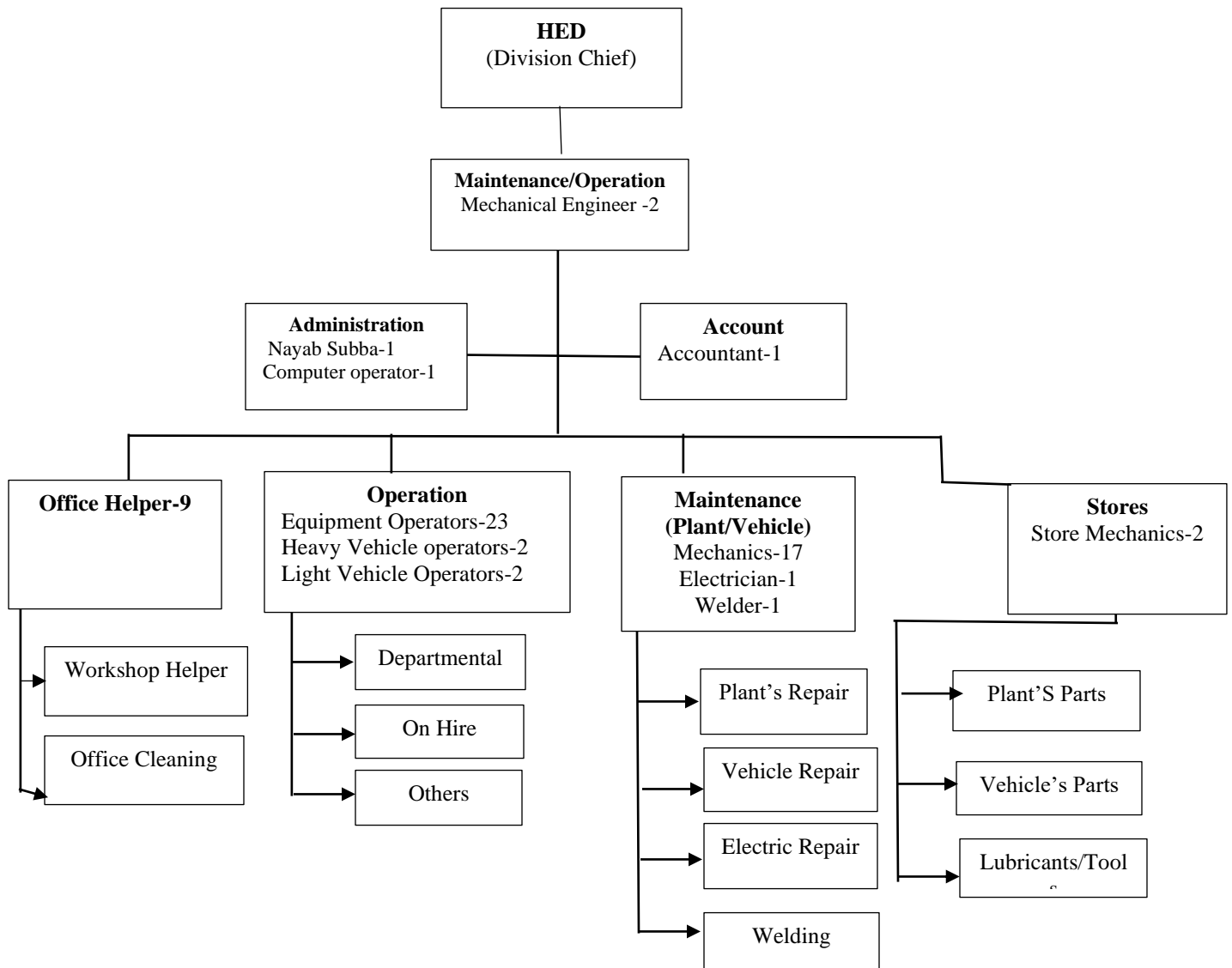
F/Y 2080-81		
Office	<i>Department of Roads, Heavy Equipment Division (HED), Pokhara</i>	
Location	<i>Rastrabank Chowk, Pokhara</i>	
Work Area	<i>Gandaki Province</i>	
Office to be supported	<i>DRO, Pokhara DRO, Damauli DRO, Baglung Bride Sector, Pokhara Other Development Projects</i>	
No. of Active Equipment	<i>47items (19 types)</i>	
Progress (F/Y 2080/81)	<i>100% (Overall)</i>	<i>337010133: 100% 337010134: 100% 337010113 : 100%</i>
Total Theoretical Hire	<i>Rs. 2,16,61,850.00 (As per Shift)</i>	
Total Actual Hire Revenue	<i>Rs.1,07,57,040.00</i>	
Highest Hire Revenue (Equipment-wise)	<i>Rs. 17,24,000.00 (RD No.: 055-088 Motor Grader)</i>	
Highest Hire Revenue (Users-wise)	<i>Rs. 31,74,240.00(Anhui Kaiyaan Highway and Bridge P. Ltd.)</i>	
Total Equipment Operation Hours	<i>Equipment: 10178.08Hrs (Heavy- 6217.3 Hrs; Medium-3960.78)</i>	
Highest Operation (Utilization Hrs.) (Equipment-wise)	<i>Motor Grader (RD 055-088): 1085 Hrs</i>	
Total Staffs	<i>Total: 66 (Adm. 12 and Tech.-54)</i>	<i>Fulfilled: 50 (Adm. 8 and Tech.-42)</i>
Total Amount of Financial Irregularity (BERUJU)	<i>NO</i>	

1. Introduction

There are eight regional based heavy equipments / vehicles maintenance workshops namely Heavy Equipment Division, (HED) under Mechanical Branch of Department of Roads. The HED Pokhara is one of them for Gandaki Province located at Pokhara.

2. Organization Structure

The organization and manpower structure of this division shown below is depicted on the basis of the nature of the job and responsibilities involved.



3. Work Responsibilities

The main function of this Division is to maintain all equipment / vehicles in good work and to assist Division Road Offices (DROs) with equipment and machinery support required for construction and maintenance of roads within the region.

It looks overall management of equipment that includes repair & maintenance, operation and utilization of equipment/ vehicles and also monitors equipment movement within the region in co-operation with the DoR, Regional Directorate Office, Pokhara.

This Division supports mainly 3 DROs (DRO-Pokhara, DRO-Damauli and DRO-Baglung).

4. Active Equipment

There are 47 pieces (19 types) of equipment available. All equipment has been running in this division for F/Y 2080/81 and they are considered as active equipment. The types of equipment and its available units are listed below in [Table-1.1](#).

Table-1.1

Sr. No.	RD Code	Equipment Type	Available Unit	Active Equipment	Remarks
1	031	Track Dozer	1	1	
2	042	Excavator	5	5	
3	055	Motor Grader	4	4	
4	068	Wheel Loader	7	7	
5	070	Back Hoe Loader	5	5	
6	109	Phoenix Chip Spreader	1	1	
7	017	Air Compressor	1	1	
8	032	Bitumen Distributor	2	2	
9	043	Mini Excavator	1	1	
10	072	Skid Steer Loader/ Snow Blower	2	2	
11	096	Pneumatic Roller	2	2	
12	098	Vibrating Roller	2	2	
13	101	Vibrating Roller (Sakai/JCB)	2	2	
14	114	Crane Mounted Truck	1	1	
15	115	Flat Bed Truck	1	1	
16	116	Tripper Truck	5	5	
17	118	Transport Truck	2	2	
18	119	Water Tanker	2	2	
19	138	Reversible Plate Compactor	1	1	
Total			47	47	

5. Allocation of Equipment for this Rainy Season

Allocation of Equipment has been done based on necessity and demand of concerned DROs and Projects for this rainy season. The allocation of equipment for this rainy season is shown in **Table 2.1**.

Table-2.1

Sr. No.	RD No.	Machine	Work Description	Used by	Location	Purpose
1	042-035	Track Excavator	Landslide Clearing	Dumre Besi Sahar Sadak Yojana	Dumre Besi Sahar Chame Sector	Emergency Road Maintenance and Rainy Season
2	070-057	Backhoe Loader	Landslide Clearing		Dumre Besi Sahar Chame Sadak Sector	
3	068-169	Wheel Loader	Landslide Clearing		Dumre Besi Sahar Chame Sadak Sector	
4	068-154	Wheel Loader	Landslide Clearing	DRO Pokhara	Prithvi Highway	
5	068-132	Wheel Loader	Landslide Clearing		Siddhartha Highway	
6	068-089	Wheel Loader	Landslide Clearing		Siddhartha Highway	
7	070-019	Backhoe Loader	Landslide Clearing		Siddhartha Highway	
8	070-055	Backhoe Loader	Landslide Clearing		Siddhartha Highway	
9	116-354	Tripper Truck	Landslide Clearing		Siddhartha Highway	
10	068-113	Wheel Loader	Landslide Clearing		Siddhartha Highway	
11	116-412	Tripper Truck	Landslide Clearing		Prithvi Highway	
12	042-048	Track Excavator	Landslide Clearing		Kaligandaki Corridor	
13	068-121	Wheel Loader	Landslide Clearing	Galeswor-Tatopani-Dana Ghasa-Lete Section		
14	068-148	Wheel Loader	Landslide Clearing	Galeswor-Tatopani-Dana Ghasa-Lete Section		
15	116-413	Tripper Truck	Landslide Clearing	Galeswor-Tatopani		
16	070-054	Backhoe Loader	Landslide Clearing	DRO Baglung	Maldhunga Beni Section	
17	116-326	Tripper Truck	Landslide Clearing		Maldhunga Beni Section	
18	070-028	Backhoe Loader	Landslide Clearing/ Cleaning Canal	Madhyapahadi Lokmarga Yojana	Burtibang Section	
19	Ba01001 Ga4287	Tripper Truck				
20	114-014	Crane Mounted Truck			Stand by at HED	
21	118-027	Transport Truck			Standby at HED	
22	115-099	Transport Truck			Standby at HED	
23	118-035	Transport Truck			Standby at HED	
24	031-115	Track Dozer			Standby at HED	
25	042-052	Excavator			Standby at HED	
26	042-065	Excavator			Standby at HED	
27	042-071	Wheel Excavator			Standby at HED	

6. Annual Utilization.

The utilization reports of the equipment are produce on the basis of total hours of machine operation that includes machine used for department work, rental work. The summary of annual utilization report is tabulated below in table 4.9.

Table-3.1

Sr. No.	Machines	Utilized Unit	Utilization (Hrs/ kms)	Remarks
1	Heavy Equipment	23	6217.3 Hrs.	
2	Medium Equipment	24	3960.78 Hrs.	

7. Equipment Operation

Altogether, there are 47 pieces (19types) of equipment available in this division out of which 36 pieces (13 types) of active equipment were used depending upon the demand of machine for different work activities that includes departmental, non-departmental, workshop's use and on hire.

Table 4.1

Sr. No.	RD Code	Equipment	No. of equipment used (Active Equipment)	Total Operation (Hrs.)	Average Operation (Hrs.)
1	031	Track Dozer	1	0	0
2	042	Excavator	5	1118.3	223.66
3	055	Motor Grader	4	2112.5	528.13
4	068	Wheel Loader	7	1317	188.14
5	070	Back Hoe Loader	5	1124	224.8
6	109	Phoenix Chip Spreader	1	545.5	545.5
7	017	Air Compressor	1	0	0
8	032	Bitumen Distributor	2	508.5	254.25
9	043	Mini Excavator	1	16	16
10	072	Skid Steer Loader/Snow Blower	1/1	0	0
11	096	Pneumatic Roller	2	1258	629
12	098	Vibrating Roller	2	37	18.5
13	101	Vibrating Roller (Sakai/JCB)	2	889.5	444.75
14	114	Crane Mounted Truck	1	16	16
15	115	Flat Bed Truck	1	0	0
16	116	Tripper Truck	5	378.14	75.62
17	118	Transport Truck	2	230.64	115.32
18	119	Water Tanker	2	624	312
19	138	Reversible Plate Compactor	1	3	3
Total			47	10178.08	3594.67

8. Major Repair and Maintenance

In addition to the regular servicing, general repair & maintenance work activities of active equipment including light vehicles, there are some major repair works/ rehabilitation works were prioritized for maintenance being given to the essential and easily repairable equipment. The major maintenance of this year are given below in **Table 5.1**

Table 5.1

Sr. No.	RD No.	Machine	Make/Model	Description of Works	Remarks
1	068-148	Wheel Loader	Doosan/DL215A	Tyre-Tube, Flap, Bucket Teeth, Cabin all Glass change and Servicing	
2	119-035	Water Tanker	Isuzu/TXD	Engine Overhaul, Cabin Dent/Paint, Pressure/Clutch Plate change	
3	055-088	Motor Grader	Hidromek/MG330	All Tyre-Tube, Flap change and Servicing	
4	Ba.2.Jha 1067	Double Cab Pick-Up	Ford /Ranger	Pressure/Clutch Plate, Drive Shaft, Brake Disc, Brake Drum, Wiring and All Tyre change	
5	Ba.8.Cha. 4190	Double Cab Pick-Up	Nissan/D-40	Engine Overhaul, Engine Head, Fly Wheel, Pressure/Clutch Plate and Turbocharger change	
6	B AA7447	Double Cab Pick-Up	Ford /Ranger	Four Wheel Motor, Crown Overhaul, Wiring and Tyre change	

9. Auction

The equipment and item mentioned as auctionable item in Jinsi Khata Nirixan report in F.Y. 2080/081 were auctioned from HED, Pokhara. The detail of items which were auctioned is shown in **Table 6.1**

Table 6.1

S.N.	Description	RD No.	Make/Model	Nos.	Unit
1	Kawasaki Roller	094-055	Kawasaki/KMRH-12	1	Pc.
2	Isuzu Tripper Truck	116-234	Isuzu/Isuzu-6BDI	1	Pc.
3	Mobile Crane Truck	114-011	Aeolus/6B59	1	Pc.
4	Kawasaki Roller	094-060	Kawasaki/KMRH-12	1	Pc.
5	Mitsubishi Pickup Truck	117-012	Mitsubishi/4D31-0A	1	Pc.
6	Spare Parts Line item			648	Pcs.
7	Tyre			77	Pcs.
8	Battery			57	Pcs.
9	Scrap			7000	Kg.
Total Amount			22,49,830.00/-		

The income of HED, Pokhara from the auction of equipment and item was Rs. 22,49,830.00/-.

10. Construction Work

Earlier, in the lack of shed, many heavy equipment were parked in open yard . Mechanical Training Centre completed the work of construction of sheds in premises of Hed, Pokhara. The type of infrastructure constructed in Hed, Pokhara in this Fiscal Year premises are shown in **Table 7.1**

Table 7.1

S.N.	Description	Nos.	Size	Unit
1	Shed	1	20x10	m ²
2	Shed	1	15x10	m ²
3	Shed	1	25x7	m ²
4	Water Tank	1	30000	Ltr.