

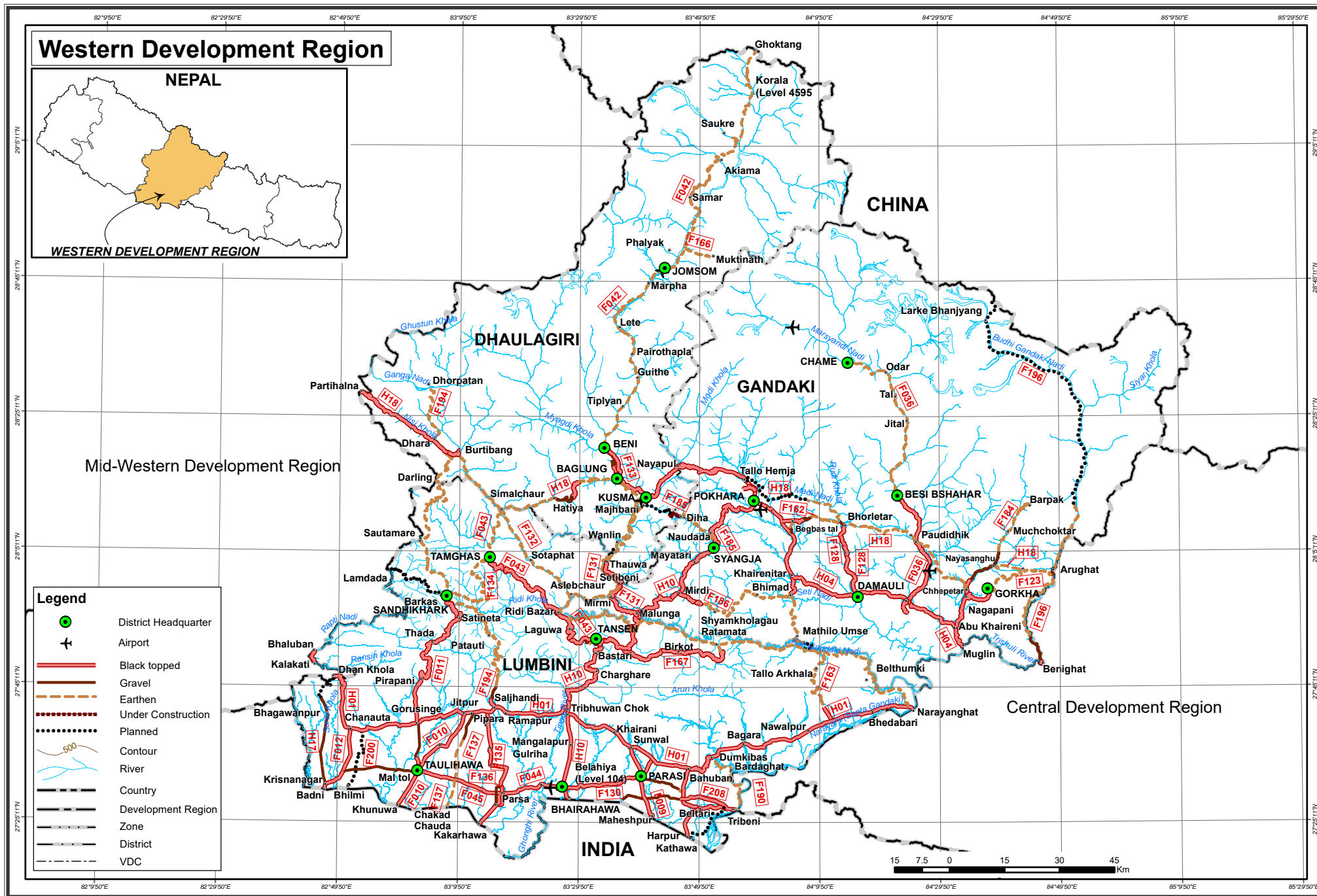
**WESTERN
DEVELOPMENT REGION**

WESTERN DEVELOPMENT REGION
Road Length with category and Pavement
(in Kilometer)

Road Classification	Zone	BT	GR	ER	Total	UC	PL
National Highway	Gandaki	184.23	0.00	0.00	184.23	0.00	0.00
	Dhaulagiri	0.00	0.00	0.00	0.00	0.00	0.00
	Lumbini	293.93	0.00	0.00	293.93	0.00	0.00
	Sub-Total	478.16	0.00	0.00	478.16	0.00	0.00
Feeder Road	Gandaki	217.18	34.80	308.90	560.88	3.00	105.00
	Dhaulagiri	56.82	12.42	359.00	428.24	5.00	20.00
	Lumbini	452.62	50.84	545.59	1049.05	0.00	70.01
	Sub-Total	726.62	98.06	1213.49	2038.17	8.00	195.01
Mid-Hill Road	Gandaki	0.00	0.00	85.00	85.00	0.00	27.00
	Dhaulagiri	62.00	13.00	55.00	130.00	0.00	0.00
	Lumbini	0.00	0.00	0.00	0.00	0.00	0.00
	Sub-Total	62.00	13.00	140.00	215.00	0.00	27.00
Postal Road	Gandaki	0.00	0.00	0.00	0.00	0.00	0.00
	Dhaulagiri	0.00	0.00	0.00	0.00	0.00	0.00
	Lumbini	0.00	58.50	2.00	60.50	0.00	8.00
	Sub-Total	0.00	58.50	2.00	60.50	0.00	8.00
Grand Total		1266.78	169.56	1355.49	2791.83	8.00	230.01

Summary of Road Length

Road Classification	BT	GR	ER	Total	UC	PL
National Highway	478.16	0.00	0.00	478.16	0.00	0.00
Feeder Road	726.62	98.06	1213.49	2038.17	8.00	195.01
Mid-Hill Road	62.00	13.00	140.00	215.00	0.00	27.00
Postal Road	0.00	58.50	2.00	60.50	0.00	8.00
Total	1266.78	169.56	1355.49	2791.83	8.00	230.01



GANDAKI ZONE
Road Length with Category and Pavement
(in Kilometer)

Road Classification	District	BT	GR	ER	Total	UC	PL
National Highway	Gorkha	0.00	0.00	0.00	0.00	0.00	0.00
	Lamjung	0.00	0.00	0.00	0.00	0.00	0.00
	Tanahu	71.25	0.00	0.00	71.25	0.00	0.00
	Syangja	77.58	0.00	0.00	77.58	0.00	0.00
	Kaski	35.40	0.00	0.00	35.40	0.00	0.00
	Manang	0.00	0.00	0.00	0.00	0.00	0.00
	NH Total	184.23	0.00	0.00	184.23	0.00	0.00
Feeder Road	Gorkha	31.04	28.80	122.40	182.24	0.00	97.00
	Lamjung	31.84	1.00	36.00	68.84	0.00	0.00
	Tanahu	57.24	0.00	51.00	108.24	0.00	8.00
	Syangja	40.00	0.00	54.00	94.00	3.00	0.00
	Kaski	57.06	5.00	15.50	77.56	0.00	0.00
	Manang	0.00	0.00	30.00	30.00	0.00	0.00
	FRN Total	217.18	34.80	308.90	560.88	3.00	105.00
Mid-Hill Road	Gorkha	0.00	0.00	31.00	31.00	0.00	0.00
	Lamjung	0.00	0.00	38.00	38.00	0.00	0.00
	Tanahu	0.00	0.00	0.00	0.00	0.00	0.00
	Syangja	0.00	0.00	0.00	0.00	0.00	0.00
	Kaski	0.00	0.00	16.00	16.00	0.00	27.00
	Manang	0.00	0.00	0.00	0.00	0.00	0.00
	MH Total	0.00	0.00	85.00	85.00	0.00	27.00
Postal Road	Gorkha	0.00	0.00	0.00	0.00	0.00	0.00
	Lamjung	0.00	0.00	0.00	0.00	0.00	0.00
	Tanahu	0.00	0.00	0.00	0.00	0.00	0.00
	Syangja	0.00	0.00	0.00	0.00	0.00	0.00
	Kaski	0.00	0.00	0.00	0.00	0.00	0.00
	Manang	0.00	0.00	0.00	0.00	0.00	0.00
	PR Total	0.00	0.00	0.00	0.00	0.00	0.00
Grand Total		401.41	34.80	393.90	830.11	3.00	132.00

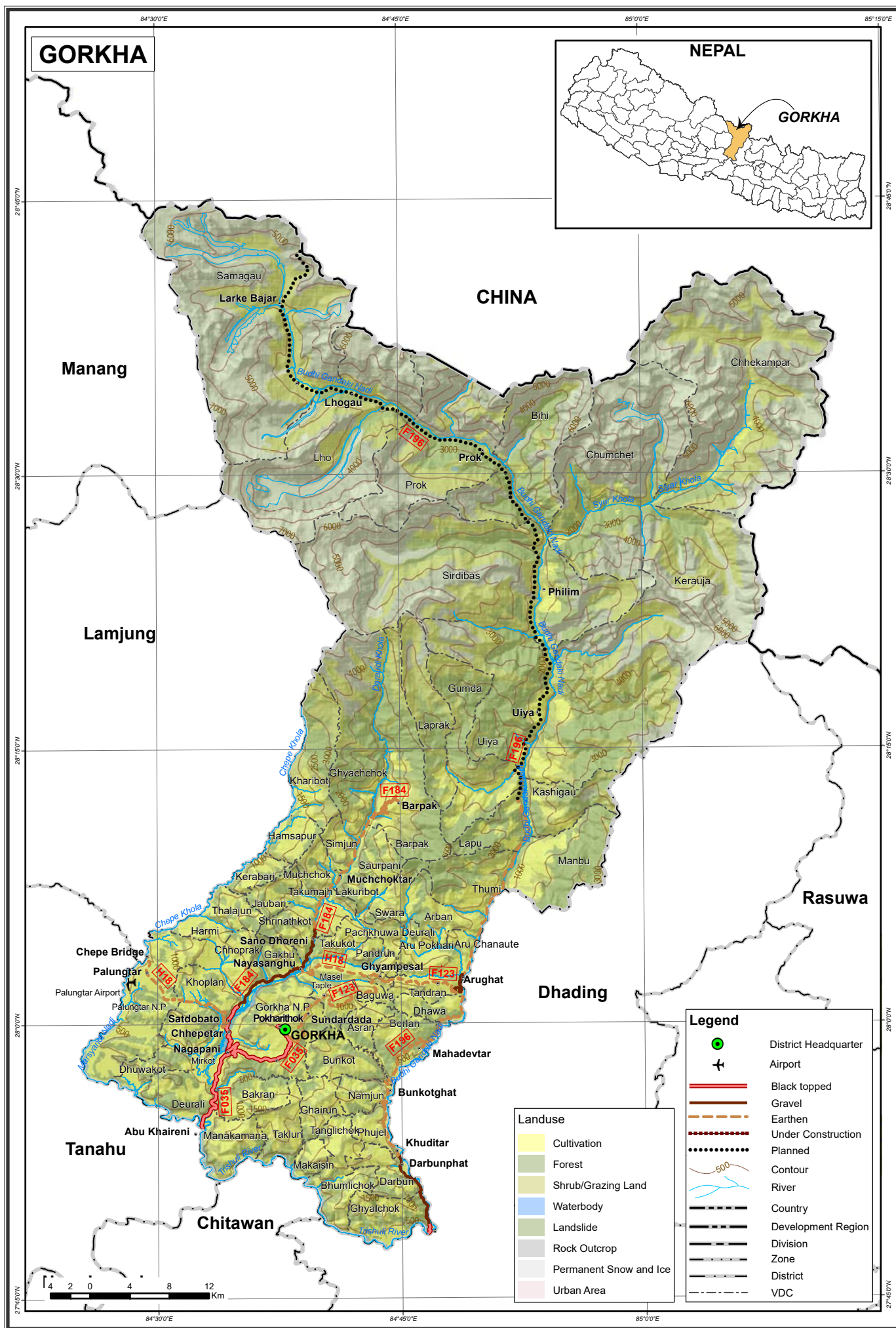


DISTRICT:GORKHA

ZONE:GANDAKI

REGION:WESTERN

S.N	Name of Road	Class	Ref No	Link Code	BT	GR	ER	Total	UC	PL
1	Marsyangdi River-Gorkha	FRN	F035	F03502	23.84	0.00	0.00	23.84	0.00	0.00
2	Aarughat-Dharapani-Gorkha	FRN	F123	F12302	0.00	4.00	32.00	36.00	0.00	0.00
3	11 Kilo(F035)-Chhepetar-Bhaluswara-Barpak	FRN	F184	F18401	6.20	15.00	27.40	48.60	0.00	0.00
4	District Border-Arughat	FRN	F196	F19602	1.00	9.80	35.20	46.00	0.00	0.00
5	Arughat-Larke Bhanjyang(CB)	FRN	F196	F19603	0.00	0.00	27.80	27.80	0.00	97.00
6	Ghyampesal-Nayasanghu (Midhill)	MH	H18	H1830	0.00	0.00	10.00	10.00	0.00	0.00
7	Satdobato - Palungtar (Midhill)	MH	H18	H1831	0.00	0.00	16.00	16.00	0.00	0.00
8	Palungtar - Chepe Bridge (Midhill)	MH	H18	H1832	0.00	0.00	5.00	5.00	0.00	0.00
Total					31.04	28.80	153.40	213.24	0.00	97.00



DISTRICT:LAMJUNG

ZONE:GANDAKI

REGION:WESTERN

S.N	Name of Road	Class	Ref No	Link Code	BT	GR	ER	Total	UC	PL
1	District border-Besisahar	FRN	F036	F03602	19.17	0.00	0.00	19.17	0.00	0.00
2	Besisahar-Ghermu	FRN	F036	F03603	0.00	0.00	17.00	17.00	0.00	0.00
3	Ghermu-Sattale	FRN	F036	F03604	0.00	0.00	18.00	18.00	0.00	0.00
4	Jyamiretar-Neupanebesi(Byas Marg)	FRN	F128	F12802	6.00	0.00	0.00	6.00	0.00	0.00
5	Neupanebesi-Bhorletar(Byas Marg)	FRN	F128	F12803	6.67	0.00	0.00	6.67	0.00	0.00
6	Ram Bajar-Bhorletar	FRN	F162	F16202	0.00	1.00	1.00	2.00	0.00	0.00
7	Chepe Bridge-Paudidhik (Midhill)	MH	H18	H1833	0.00	0.00	11.00	11.00	0.00	0.00
8	Paudidhik-Sundarbazar	MH	H18	H1834	0.00	0.00	3.00	3.00	0.00	0.00
9	Sundarbazar-Bhorletar	MH	H18	H1835	0.00	0.00	24.00	24.00	0.00	0.00
Total					31.84	1.00	74.00	106.84	0.00	0.00

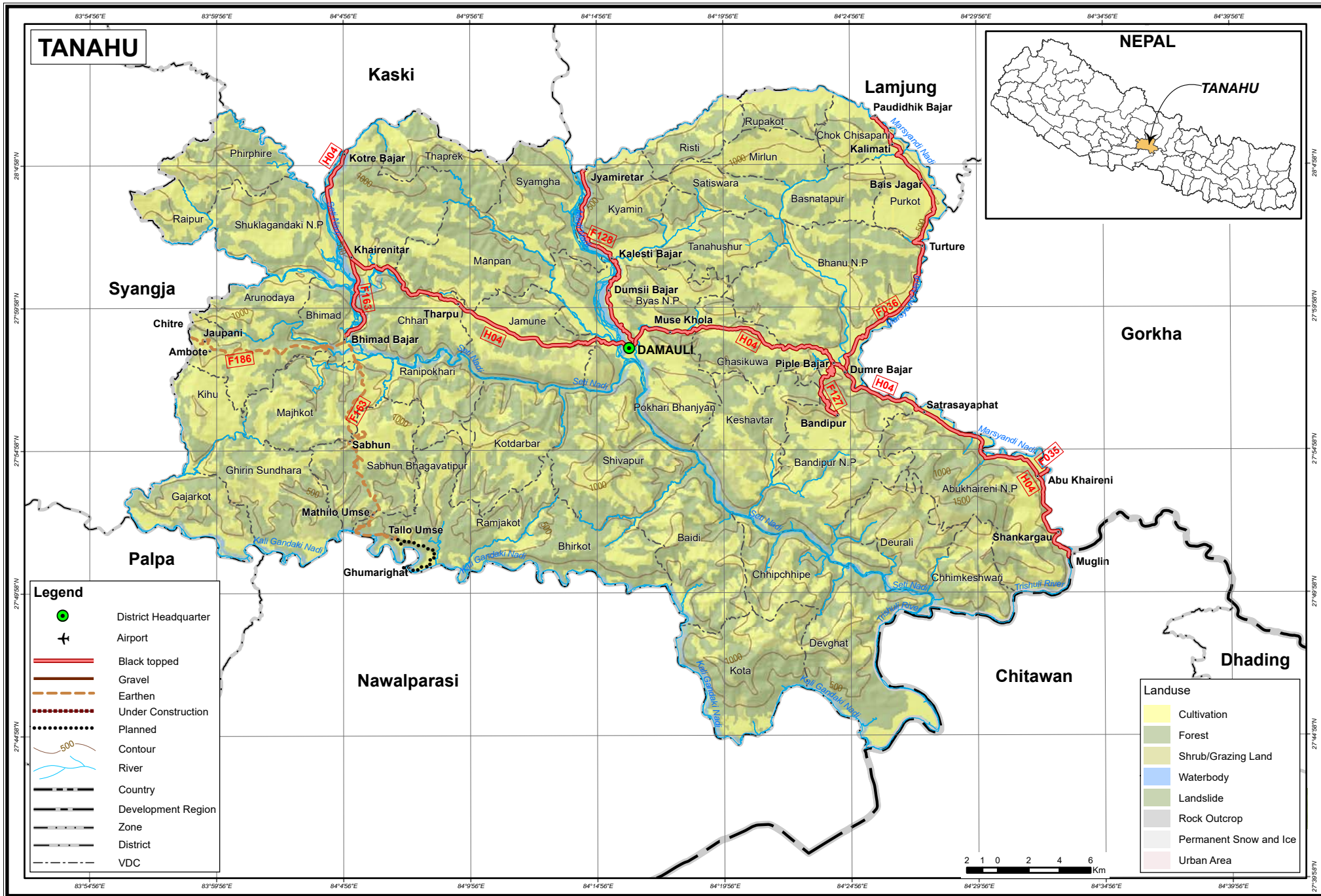


DISTRICT:TANAHU

ZONE:GANDAKI

REGION:WESTERN

S.N	Name of Road	Class	Ref No	Link Code	BT	GR	ER	Total	UC	PL
1	Mungling bridge-Ambukhaireni	NH	H04	H0406	7.38	0.00	0.00	7.38	0.00	0.00
2	Anbukhaireni-Dumre	NH	H04	H0407	16.65	0.00	0.00	16.65	0.00	0.00
3	Dumre-Muse Khola	NH	H04	H0408	14.11	0.00	0.00	14.11	0.00	0.00
4	Muse Khola-Byas municipality boundary	NH	H04	H0409	5.32	0.00	0.00	5.32	0.00	0.00
5	Byas municipality boundary-Kotre	NH	H04	H0410	27.79	0.00	0.00	27.79	0.00	0.00
6	Anbukhaireni (PRM)-Marshyangdi River	FRN	F035	F03501	0.85	0.00	0.00	0.85	0.00	0.00
7	Dumre(PRM)-district border	FRN	F036	F03601	24.26	0.00	0.00	24.26	0.00	0.00
8	Dumre (PRM)-Bandipur	FRN	F127	F12701	8.00	0.00	0.00	8.00	0.00	0.00
9	Damauli (PRM)-Jyamiretar(Byas Marg)	FRN	F128	F12801	16.13	0.00	0.00	16.13	0.00	0.00
10	Khairnitar (PRM)-Bhimad-Ghumarighat	FRN	F163	F16301	8.00	0.00	33.00	41.00	0.00	8.00
11	Chitre Bhanjyang-Bhimad	FRN	F186	F18602	0.00	0.00	18.00	18.00	0.00	0.00
Total					128.49	0.00	51.00	179.49	0.00	8.00



DISTRICT:SYANGJA

ZONE:GANDAKI

REGION:WESTERN

S.N	Name of Road	Class	Ref No	Link Code	BT	GR	ER	Total	UC	PL
1	Kaligandaki-Waling	NH	H10	H1009	29.35	0.00	0.00	29.35	0.00	0.00
2	Waling-Syangja	NH	H10	H1010	27.62	0.00	0.00	27.62	0.00	0.00
3	Syangja-Kubinde	NH	H10	H1011	20.61	0.00	0.00	20.61	0.00	0.00
4	Malunga (SRM)-Mirmi(Kaligandaki NS Corridor)	FRN	F131	F13101	19.00	0.00	0.00	19.00	0.00	0.00
5	Mirmi-Setibeni (Kaligandaki-Kushma)(Kaligandaki NS Corridor)	FRN	F131	F13102	11.00	0.00	0.00	11.00	0.00	0.00
6	Putalikheta-Karkineta	FRN	F185	F18501	0.00	0.00	23.00	23.00	3.00	0.00
7	Mirdi-Chitre Bhanjyang	FRN	F186	F18601	10.00	0.00	31.00	41.00	0.00	0.00
Total					117.58	0.00	54.00	171.58	3.00	0.00

DISTRICT:KASKI

ZONE:GANDAKI

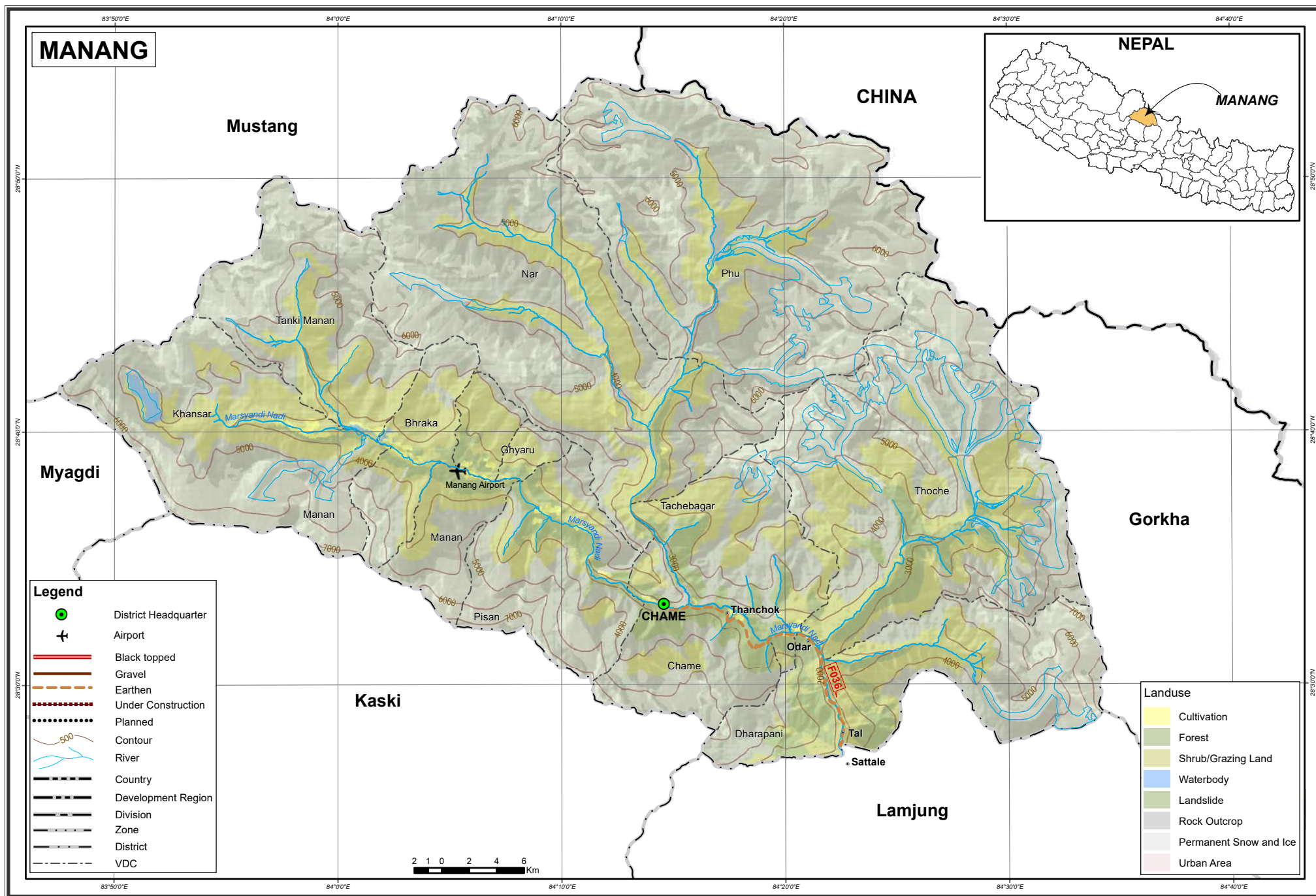
REGION:WESTERN

S.N	Name of Road	Class	Ref No	Link Code	BT	GR	ER	Total	UC	PL
1	Kotre-Bijayapur Khola	NH	H04	H0411	14.04	0.00	0.00	14.04	0.00	0.00
2	Bijayapur Khola-Prithvi Chok	NH	H04	H0412	4.85	0.00	0.00	4.85	0.00	0.00
3	Kubinde-Pokhara municipality boundary	NH	H10	H1012	12.09	0.00	0.00	12.09	0.00	0.00
4	Pokhara municipality boundary-Prithvichok	NH	H10	H1013	4.42	0.00	0.00	4.42	0.00	0.00
5	Pokhara-Sarankot	FRN	F041	F04101	4.80	0.00	0.00	4.80	0.00	0.00
6	Pokhara-Bindebasini	FRN	F042	F04201	3.96	0.00	0.00	3.96	0.00	0.00
7	Bindebasini-Yamdi bridge	FRN	F042	F04202	2.76	0.00	0.00	2.76	0.00	0.00
8	Yamdi bridge-Sandh bridge	FRN	F042	F04203	37.04	0.00	0.00	37.04	0.00	0.00
9	Talchok (PRM)-Khudimuhan (Beganas Lake)	FRN	F129	F12901	3.50	0.00	0.00	3.50	0.00	0.00
10	Beganastal-Ram Bajar	FRN	F162	F16201	5.00	4.00	14.50	23.50	0.00	0.00
11	Gagangaunda (PRM)-Begnastal	FRN	F164	F16401	0.00	1.00	1.00	2.00	0.00	0.00
12	Karaputar-Bhagawatitar	MH	H18	H1836	0.00	0.00	16.00	16.00	0.00	0.00
13	Bhagawatitar-Tallo Hemja	MH	H18	H1837	0.00	0.00	0.00	0.00	0.00	27.00
Total					92.46	5.00	31.50	128.96	0.00	27.00



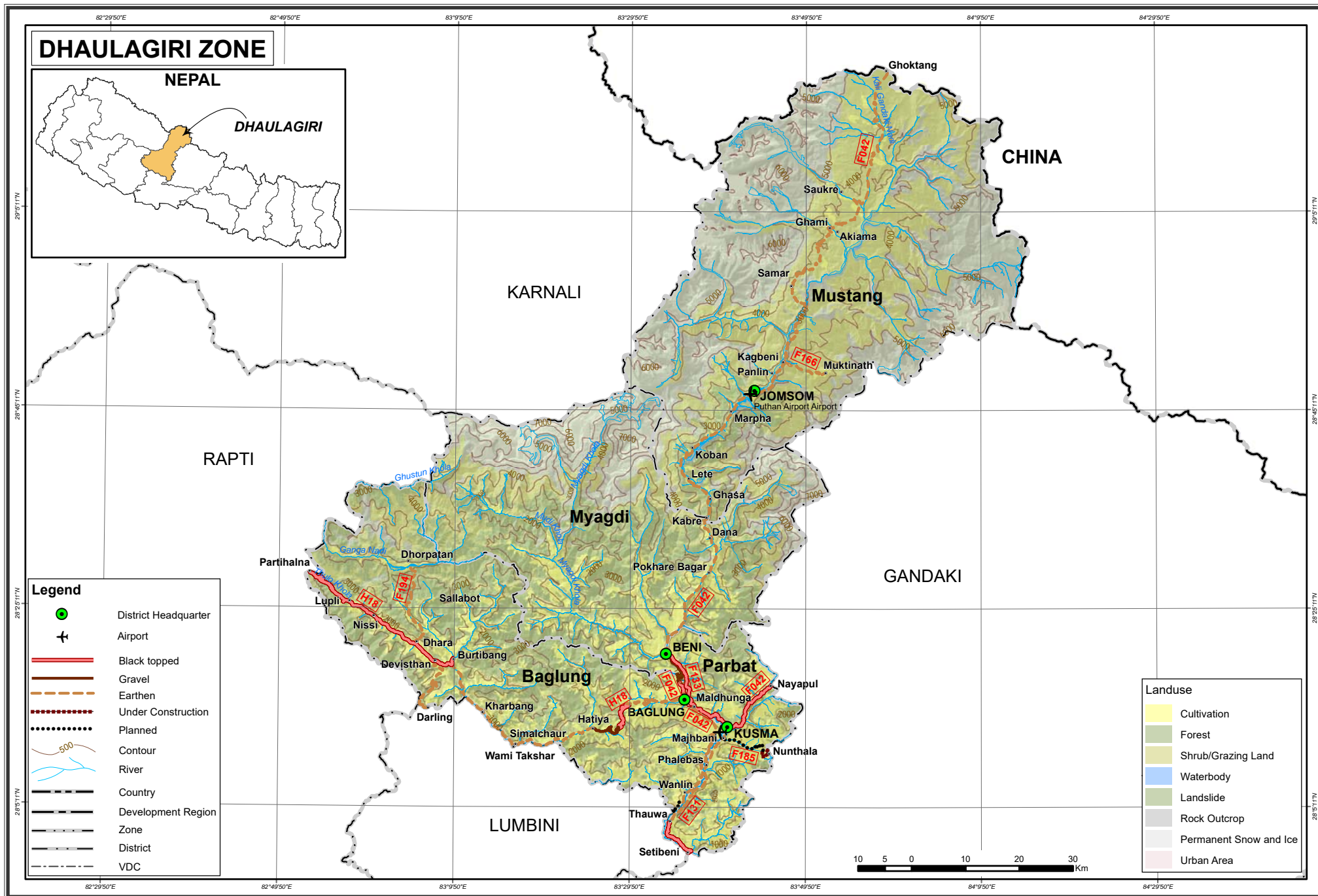
DISTRICT:MANANG
ZONE:GANDAKI
REGION:WESTERN

S.N	Name of Road	Class	Ref No	Link Code	BT	GR	ER	Total	UC	PL
1	Sattale-Chame	FRN	F036	F03605	0.00	0.00	30.00	30.00	0.00	0.00
Total					0.00	0.00	30.00	30.00	0.00	0.00



DHAULAGIRI ZONE
Road Length with Category and Pavement
(in Kilometer)

Road Classification	District	BT	GR	ER	Total	UC	PL
National Highway	Mustang	0.00	0.00	0.00	0.00	0.00	0.00
	Myagdi	0.00	0.00	0.00	0.00	0.00	0.00
	Parbat	0.00	0.00	0.00	0.00	0.00	0.00
	Baglung	0.00	0.00	0.00	0.00	0.00	0.00
	NH Total	0.00	0.00	0.00	0.00	0.00	0.00
Feeder Road	Mustang	0.00	0.00	194.00	194.00	0.00	0.00
	Myagdi	0.00	10.00	34.00	44.00	0.00	0.00
	Parbat	47.11	0.00	45.00	92.11	5.00	16.00
	Baglung	9.71	2.42	86.00	98.13	0.00	4.00
	FRN Total	56.82	12.42	359.00	428.24	5.00	20.00
Mid-Hill Road	Mustang	0.00	0.00	0.00	0.00	0.00	0.00
	Myagdi	0.00	0.00	0.00	0.00	0.00	0.00
	Parbat	0.00	0.00	0.00	0.00	0.00	0.00
	Baglung	62.00	13.00	55.00	130.00	0.00	0.00
	MH Total	62.00	13.00	55.00	130.00	0.00	0.00
Postal Road	Mustang	0.00	0.00	0.00	0.00	0.00	0.00
	Myagdi	0.00	0.00	0.00	0.00	0.00	0.00
	Parbat	0.00	0.00	0.00	0.00	0.00	0.00
	Baglung	0.00	0.00	0.00	0.00	0.00	0.00
	PR Total	0.00	0.00	0.00	0.00	0.00	0.00
Grand Total		118.82	25.42	414.00	558.24	5.00	20.00

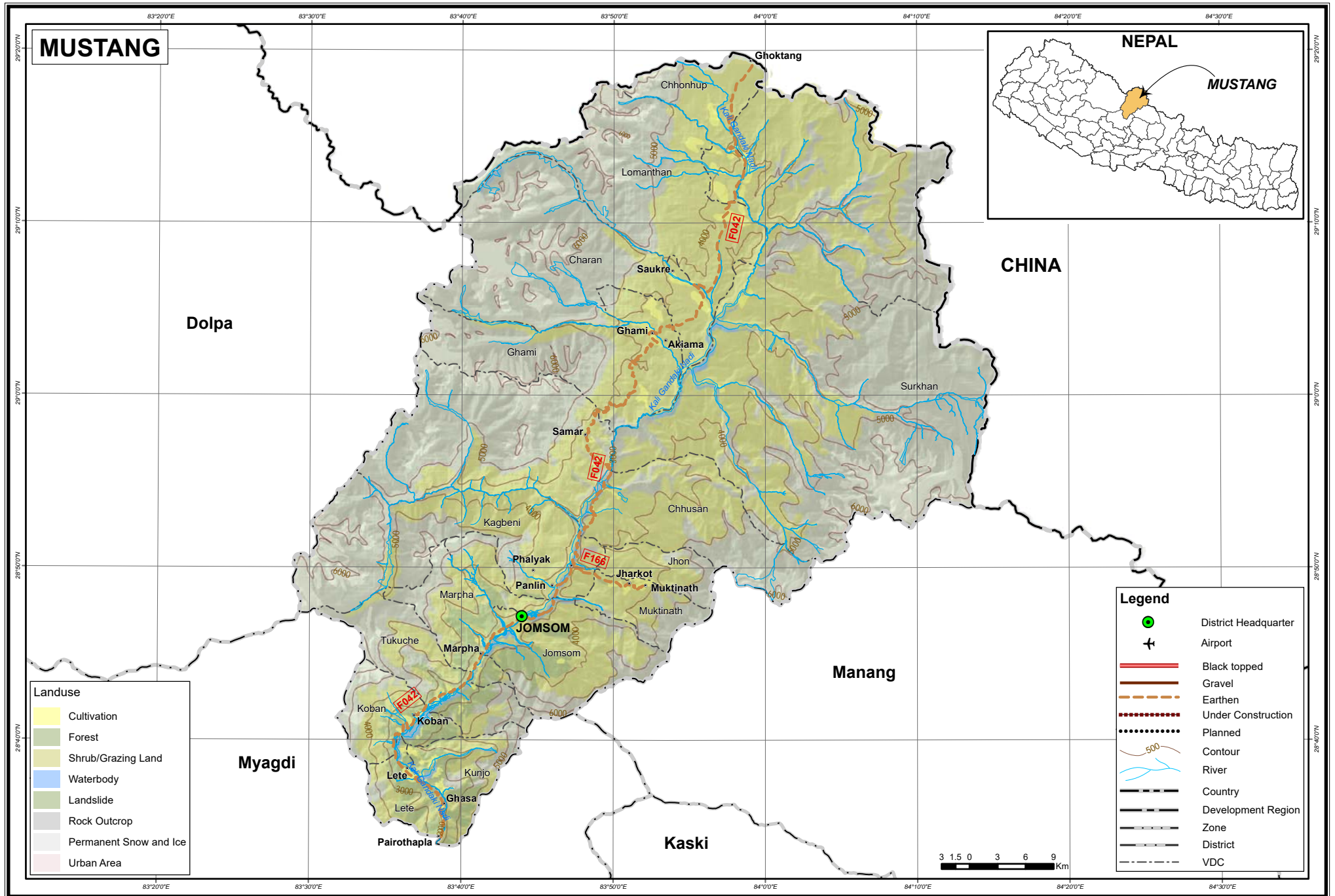


DISTRICT:MUSTANG

ZONE:DHAULAGIRI

REGION:WESTERN

S.N	Name of Road	Class	Ref No	Link Code	BT	GR	ER	Total	UC	PL
1	Pairothapla-Jomsong	FRN	F042	F04209	0.00	0.00	46.00	46.00	0.00	0.00
2	Jomsong-Ghoktang	FRN	F042	F04210	0.00	0.00	122.00	122.00	0.00	0.00
3	Kagbeni-Muktinath	FRN	F166	F16601	0.00	0.00	26.00	26.00	0.00	0.00
Total					0.00	0.00	194.00	194.00	0.00	0.00

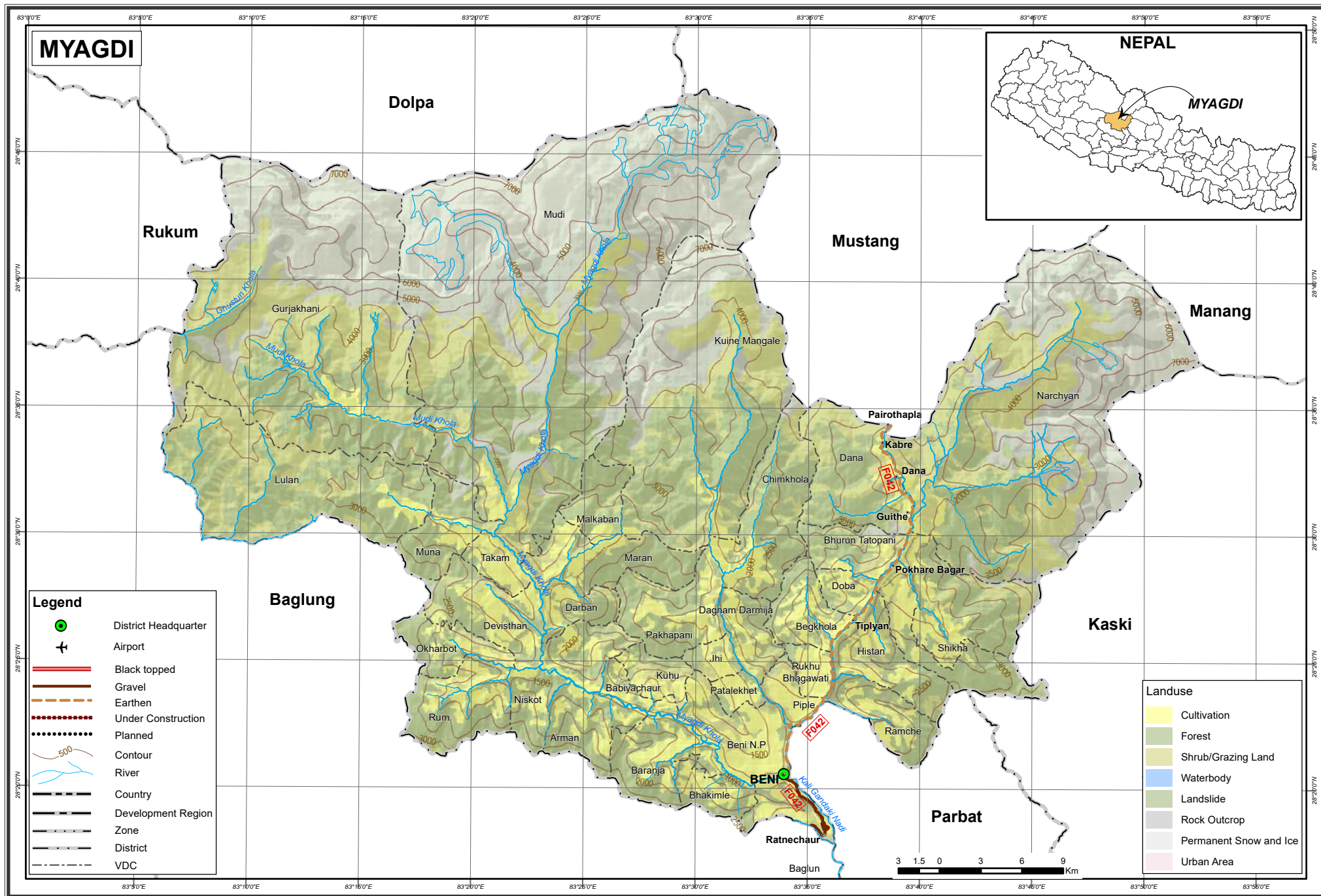


DISTRICT:MYAGDI

ZONE:DHAULAGIRI

REGION:WESTERN

S.N	Name of Road	Class	Ref No	Link Code	BT	GR	ER	Total	UC	PL
1	Myagdi district border-Beni	FRN	F042	F04207	0.00	10.00	0.00	10.00	0.00	0.00
2	Beni-Pairothapla	FRN	F042	F04208	0.00	0.00	34.00	34.00	0.00	0.00
Total					0.00	10.00	34.00	44.00	0.00	0.00

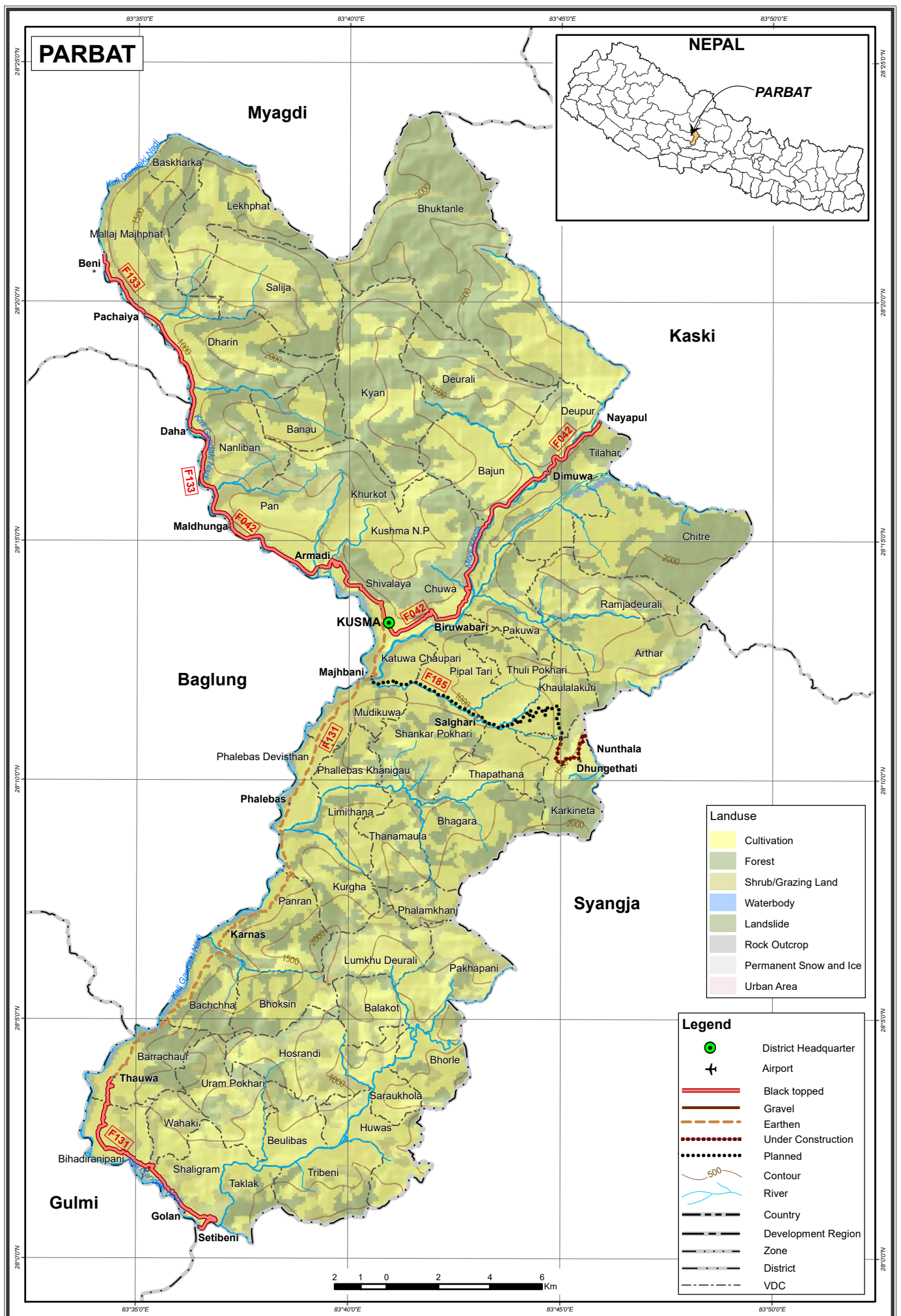


DISTRICT:PARBAT

ZONE:DHAULAGIRI

REGION:WESTERN

S.N	Name of Road	Class	Ref No	Link Code	BT	GR	ER	Total	UC	PL
1	Sandh bridge-Kaligandaki bridge	FRN	F042	F04204	24.11	0.00	0.00	24.11	0.00	0.00
2	Setibeni-Gupteswor(Kaligandaki-Kushma)(Kaligandaki NS Corridor	FRN	F131	F13103	10.00	0.00	45.00	55.00	0.00	0.00
3	Maldhunga-Beni	FRN	F133	F13301	13.00	0.00	0.00	13.00	0.00	0.00
4	Karkineta-Majhbeni(Kusma)	FRN	F185	F18502	0.00	0.00	0.00	0.00	5.00	16.00
Total					47.11	0.00	45.00	92.11	5.00	16.00

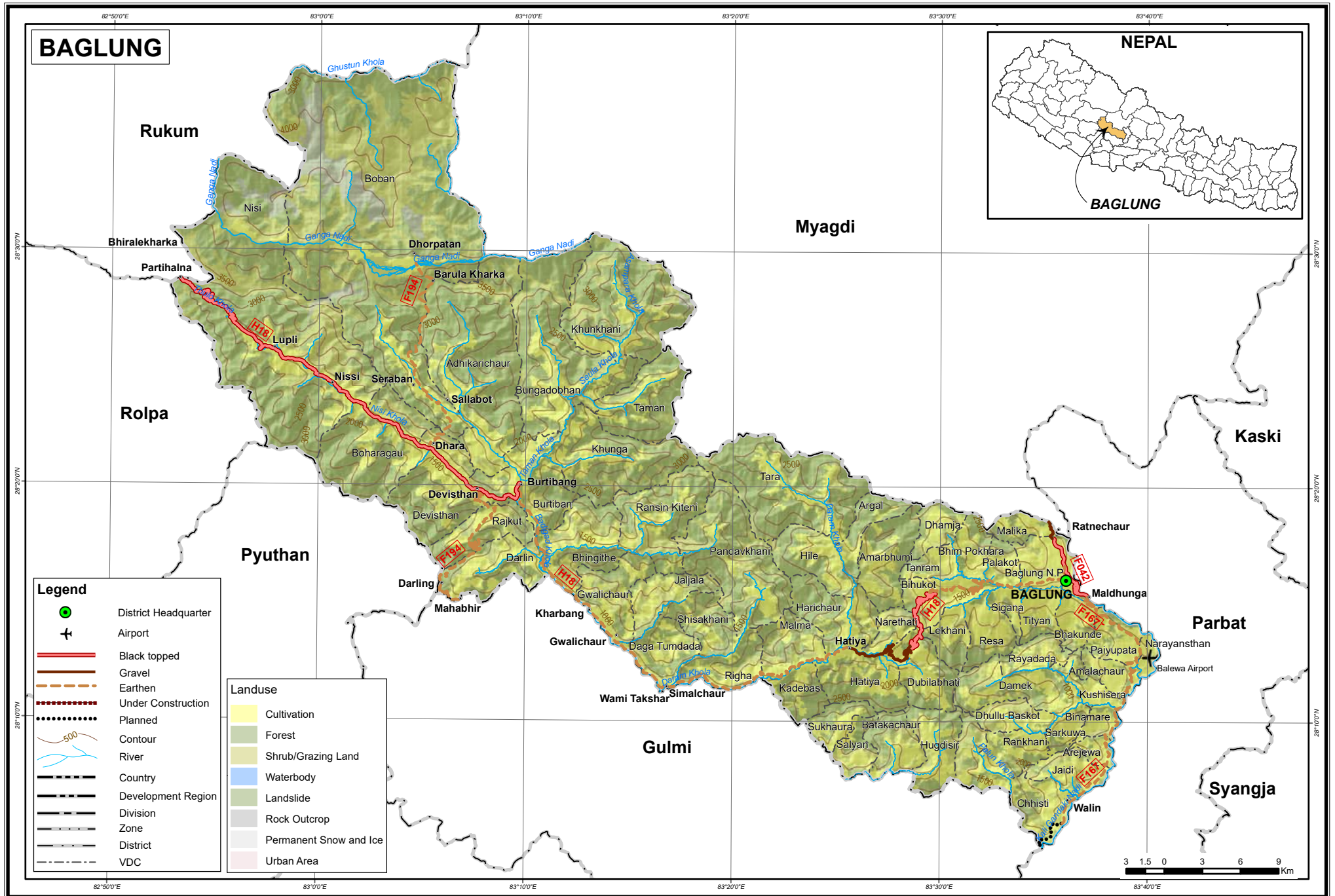


DISTRICT:BAGLUNG

ZONE:DHAULAGIRI

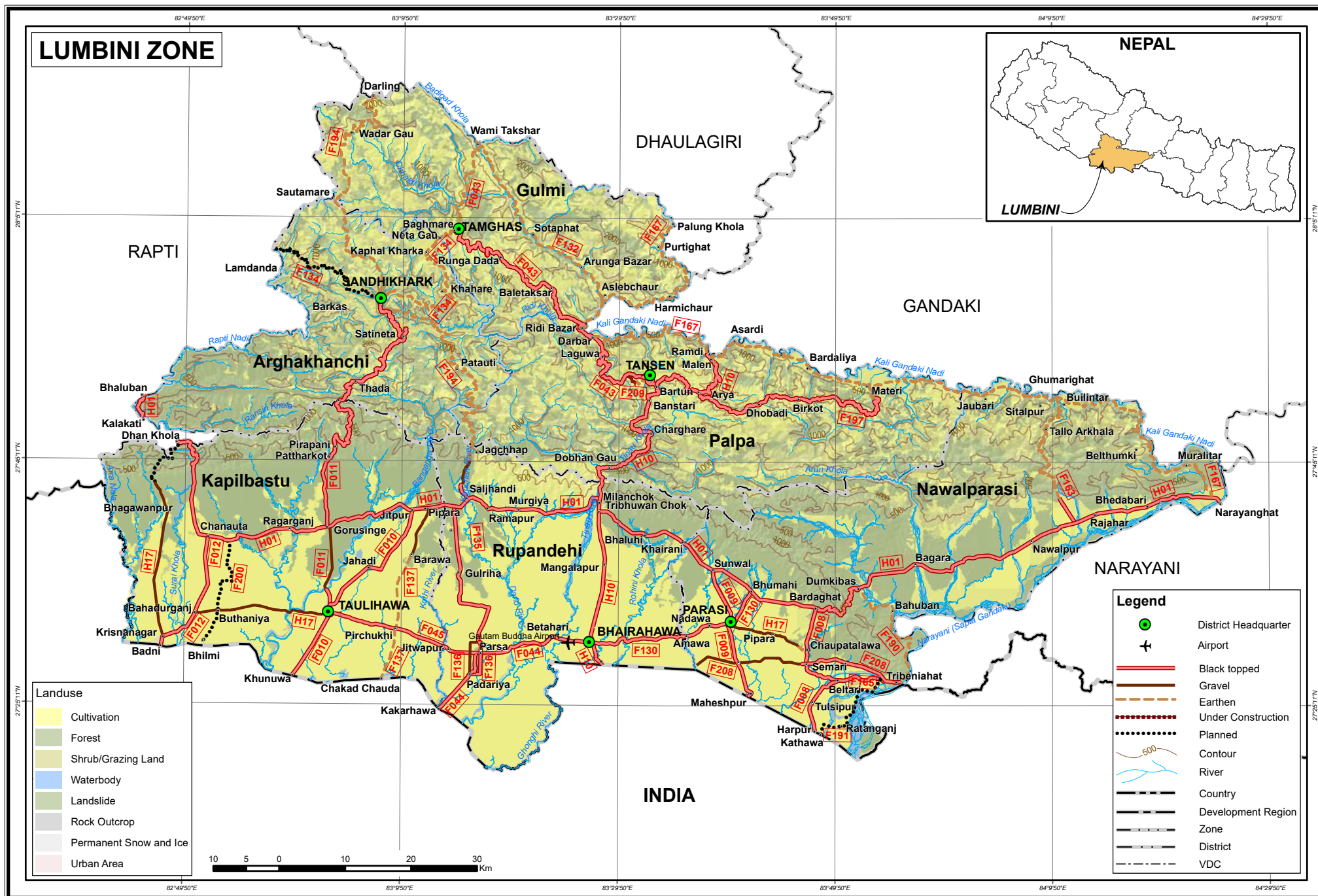
REGION:WESTERN

S.N	Name of Road	Class	Ref No	Link Code	BT	GR	ER	Total	UC	PL
1	Kaligandaki bridge-Baglung	FRN	F042	F04205	4.71	0.00	0.00	4.71	0.00	0.00
2	Baglung-Myagdi district border	FRN	F042	F04206	5.00	2.42	0.00	7.42	0.00	0.00
3	Palung Khola-Maldhunga (Kaligandaki Corridor)	FRN	F167	F16706	0.00	0.00	34.00	34.00	0.00	4.00
4	Darling(District Border)-Dhara(MH Junction)	FRN	F194	F19406	0.00	0.00	25.00	25.00	0.00	0.00
5	Dhara(MH Junction)-Dhorpatan(Uttar Ganga R)	FRN	F194	F19407	0.00	0.00	27.00	27.00	0.00	0.00
6	Baglung-Hatiya (Midhill)	MH	H18	H1838	20.00	13.00	12.00	45.00	0.00	0.00
7	Hatiya-Kharbang (Midhill)	MH	H18	H1839	0.00	0.00	21.00	21.00	0.00	0.00
8	Kharbang-Burtibang (Midhill)	MH	H18	H1840	0.00	0.00	22.00	22.00	0.00	0.00
9	Burtibang-Devisthan (Midhill)	MH	H18	H1841	5.00	0.00	0.00	5.00	0.00	0.00
10	Devisthan-Nissi (Midhill)	MH	H18	H1842	15.00	0.00	0.00	15.00	0.00	0.00
11	Nisi-Partihalna(District Border) (Midhill)	MH	H18	H1843	22.00	0.00	0.00	22.00	0.00	0.00
Total					71.71	15.42	141.00	228.13	0.00	4.00



LUMBINI ZONE
Road Length with Category and Pavement
(in Kilometer)

Road Classification	District	BT	GR	ER	Total	UC	PL
National Highway	Gulmi	0.00	0.00	0.00	0.00	0.00	0.00
	Palpa	58.93	0.00	0.00	58.93	0.00	0.00
	Nawalparasi	98.33	0.00	0.00	98.33	0.00	0.00
	Rupandehi	71.71	0.00	0.00	71.71	0.00	0.00
	Kapilbastu	60.84	0.00	0.00	60.84	0.00	0.00
	Arghakhanchi	4.12	0.00	0.00	4.12	0.00	0.00
	NH Total	293.93	0.00	0.00	293.93	0.00	0.00
Feeder Road	Gulmi	44.54	0.00	160.60	205.14	0.00	0.00
	Palpa	80.66	3.30	105.99	189.95	0.00	0.01
	Nawalparasi	98.86	17.54	147.00	263.40	0.00	19.00
	Rupandehi	84.14	11.00	3.00	98.14	0.00	0.00
	Kapilbastu	87.63	19.00	19.00	125.63	0.00	18.00
	Arghakhanchi	56.79	0.00	110.00	166.79	0.00	33.00
	FRN Total	452.62	50.84	545.59	1049.05	0.00	70.01
Mid-Hill Road	Gulmi	0.00	0.00	0.00	0.00	0.00	0.00
	Palpa	0.00	0.00	0.00	0.00	0.00	0.00
	Nawalparasi	0.00	0.00	0.00	0.00	0.00	0.00
	Rupandehi	0.00	0.00	0.00	0.00	0.00	0.00
	Kapilbastu	0.00	0.00	0.00	0.00	0.00	0.00
	Arghakhanchi	0.00	0.00	0.00	0.00	0.00	0.00
	MH Total	0.00	0.00	0.00	0.00	0.00	0.00
Postal Road	Gulmi	0.00	0.00	0.00	0.00	0.00	0.00
	Palpa	0.00	0.00	0.00	0.00	0.00	0.00
	Nawalparasi	0.00	12.00	2.00	14.00	0.00	0.00
	Rupandehi	0.00	0.00	0.00	0.00	0.00	0.00
	Kapilbastu	0.00	46.50	0.00	46.50	0.00	8.00
	Arghakhanchi	0.00	0.00	0.00	0.00	0.00	0.00
	PR Total	0.00	58.50	2.00	60.50	0.00	8.00
Grand Total		746.55	109.34	547.59	1403.48	0.00	78.01



DISTRICT:GULMI

ZONE:LUMBINI

REGION:WESTERN

S.N	Name of Road	Class	Ref No	Link Code	BT	GR	ER	Total	UC	PL
1	Ridi bridge-Ghumti	FRN	F043	F04304	32.80	0.00	0.00	32.80	0.00	0.00
2	Ghumti-Tamghas	FRN	F043	F04305	11.74	0.00	0.00	11.74	0.00	0.00
3	Tamghas-Wamitaxsar	FRN	F043	F04306	0.00	0.00	18.60	18.60	0.00	0.00
4	Ridi-Rudrabeni-Wami Taksar-Daram Khola	FRN	F132	F13201	0.00	0.00	57.00	57.00	0.00	0.00
5	Tamghas-Neta Gaun	FRN	F134	F13401	0.00	0.00	6.00	6.00	0.00	0.00
6	Ridi-Palung Khola (Kaligandaki Corridor)	FRN	F167	F16705	0.00	0.00	44.00	44.00	0.00	0.00
7	Sautamare(District Border)-Darling(District Border)	FRN	F194	F19405	0.00	0.00	35.00	35.00	0.00	0.00
Total					44.54	0.00	160.60	205.14	0.00	0.00



DISTRICT:PALPA

ZONE:LUMBINI

REGION:WESTERN

S.N	Name of Road	Class	Ref No	Link Code	BT	GR	ER	Total	UC	PL
1	Chidiya Khola-Banstari	NH	H10	H1005	27.39	0.00	0.00	27.39	0.00	0.00
2	Banstari-Bartung	NH	H10	H1006	5.29	0.00	0.00	5.29	0.00	0.00
3	Bartung-Tansen municipality boundary	NH	H10	H1007	1.10	0.00	0.00	1.10	0.00	0.00
4	Tansen municipality boundary-Kaligandaki	NH	H10	H1008	25.15	0.00	0.00	25.15	0.00	0.00
5	Bartung (SRM)-Batase Danda	FRN	F043	F04301	6.75	0.00	0.00	6.75	0.00	0.00
6	Batase Danda-Harthok	FRN	F043	F04302	8.73	0.00	0.00	8.73	0.00	0.00
7	Harthok-Ridi bridge	FRN	F043	F04303	20.18	0.00	0.00	20.18	0.00	0.00
8	Amalang-Rampur (Kaligandaki NS Corridor)	FRN	F167	F16702	0.00	0.00	20.00	20.00	0.00	0.00
9	Rampur-Ramdi (SRM)	FRN	F167	F16703	0.00	0.00	38.00	38.00	0.00	0.00
	Ramdi-Ridi (Kaligandaki Corridor)	FRN	F167	F16704	0.00	0.00	29.99	29.99	0.00	0.01
10	Satyawati(District Border)-Badahare R (District Border)	FRN	F194	F19402	0.00	0.00	12.00	12.00	0.00	0.00
11	Aryabhanjyang (SRM)-Dhobadi	FRN	F197	F19701	14.00	0.00	0.00	14.00	0.00	0.00
12	Dhobadi-Rampur	FRN	F197	F19702	31.00	0.00	3.00	34.00	0.00	0.00
13	Holangdi - Dharampani - Dhungakhani	FRN	F209	F20901	0.00	3.30	3.00	6.30	0.00	0.00
Total					139.59	3.30	105.99	248.88	0.00	0.01

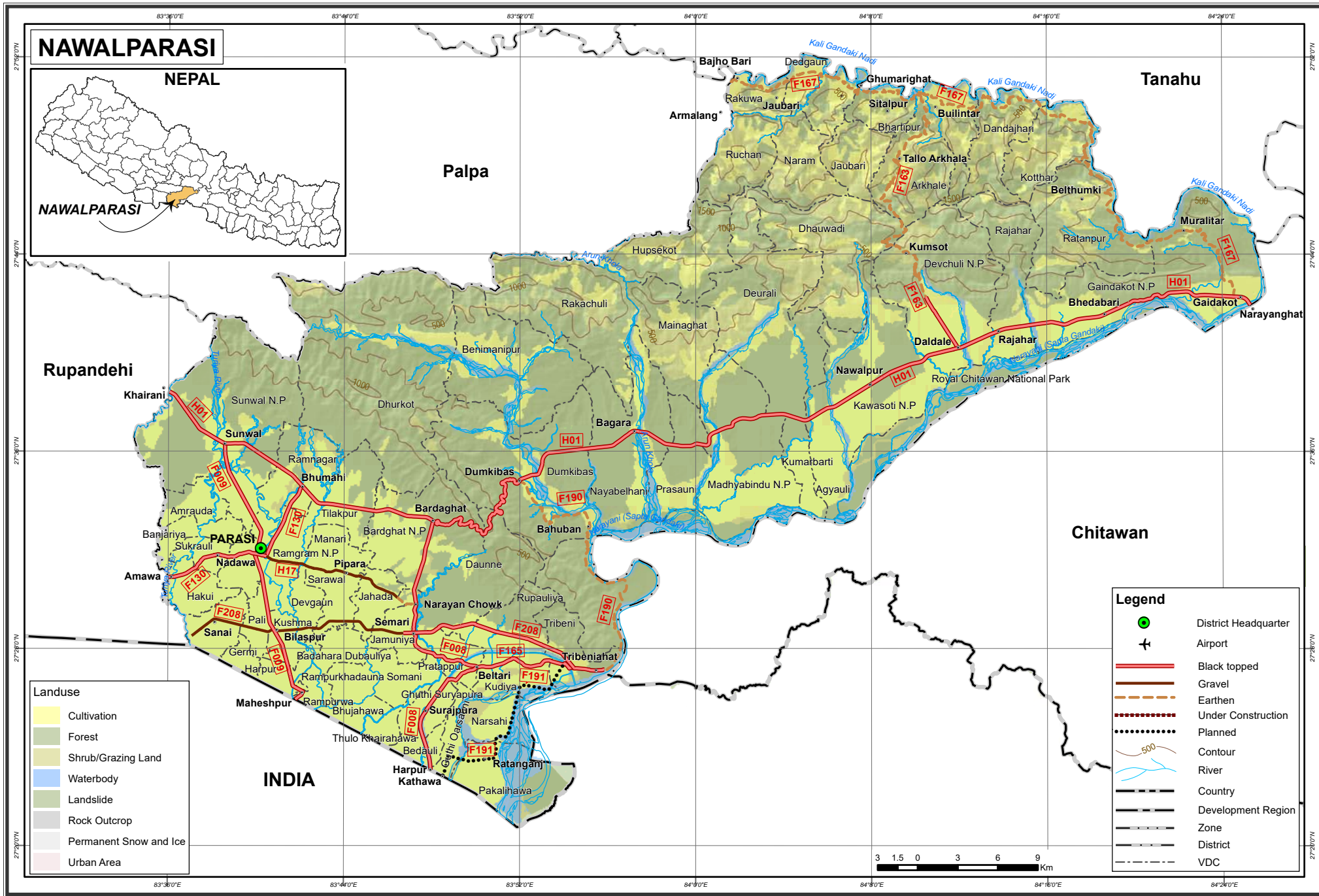


DISTRICT:NAWALPARASI

ZONE:LUMBINI

REGION:WESTERN

S.N	Name of Road	Class	Ref No	Link Code	BT	GR	ER	Total	UC	PL
1	Narayani bridge-Junction (Tiger Mountain)	NH	H01	H0138	35.26	0.00	0.00	35.26	0.00	0.00
2	Junction (Tiger Mountain)-Arun Khola	NH	H01	H0139	14.93	0.00	0.00	14.93	0.00	0.00
3	Arun Khola-Bardaghat	NH	H01	H0140	24.87	0.00	0.00	24.87	0.00	0.00
4	Bardaghat-Sunwal	NH	H01	H0141	17.46	0.00	0.00	17.46	0.00	0.00
5	Sunwal-Maha Khola	NH	H01	H0142	5.81	0.00	0.00	5.81	0.00	0.00
6	Bardaghat-Pratappur	FRN	F008	F00801	13.80	0.00	0.00	13.80	0.00	0.00
7	Pratappur-Surajpura	FRN	F008	F00802	4.58	0.00	0.00	4.58	0.00	0.00
8	Surajpura-Harpur border	FRN	F008	F00803	4.67	0.00	0.00	4.67	0.00	0.00
9	Sunwal-Parasi	FRN	F009	F00901	8.95	0.00	0.00	8.95	0.00	0.00
10	Parasi-Maheshpur (IB)	FRN	F009	F00902	12.00	0.00	0.00	12.00	0.00	0.00
11	Bhumahi (MRM)-Parasi	FRN	F130	F13001	7.00	0.00	0.00	7.00	0.00	0.00
12	Parasi-Amawa	FRN	F130	F13002	7.40	0.00	0.00	7.40	0.00	0.00
13	Ghumarighat-Pangre-Nawalpur(Kawaswoti) (MRM)	FRN	F163	F16302	7.00	0.00	50.00	57.00	0.00	0.00
14	Pratapur-Raninagar-Triveni	FRN	F165	F16501	19.00	0.00	0.00	19.00	0.00	0.00
15	Gaindakot-Amalang (Kaligandaki NS Corridor)	FRN	F167	F16701	0.00	0.00	75.00	75.00	0.00	0.00
16	Dumkibas (MRM) - Tribeni	FRN	F190	F19001	0.00	0.00	22.00	22.00	0.00	0.00
17	Kathawa (IB)-Tribeni	FRN	F191	F19101	0.00	0.00	0.00	0.00	0.00	19.00
18	Triveni-Sanahi-Gandak Nahar Sadak-Nawalparasi	FRN	F208	F20801	14.46	17.54	0.00	32.00	0.00	0.00
19	Narayanchook - Parasi (Postal)	PR	H17	H1722	0.00	12.00	2.00	14.00	0.00	0.00
Total					197.19	29.54	149.00	375.73	0.00	19.00



DISTRICT:RUPANDEHI

ZONE:LUMBINI

REGION:WESTERN

S.N	Name of Road	Class	Ref No	Link Code	BT	GR	ER	Total	UC	PL
1	Maha Khola-Sukoura	NH	H01	H0143	11.97	0.00	0.00	11.97	0.00	0.00
2	Sukoura-Butwal (Milanchok)	NH	H01	H0144	3.36	0.00	0.00	3.36	0.00	0.00
3	Butwal (Milanchok)-Butwal(Mahendrachok)	NH	H01	H0145	1.40	0.00	0.00	1.40	0.00	0.00
4	Butwal-Bamaha Khola	NH	H01	H0146	9.54	0.00	0.00	9.54	0.00	0.00
5	Bamaha Khola-Kothi River	NH	H01	H0147	17.24	0.00	0.00	17.24	0.00	0.00
6	Belhiya (IB)-Sidarthanagar	NH	H10	H1001	6.08	0.00	0.00	6.08	0.00	0.00
7	Sidarthanagar-Butwal municipality boundary	NH	H10	H1002	16.03	0.00	0.00	16.03	0.00	0.00
8	Butwal municipality boundary-Milanchok	NH	H10	H1003	1.99	0.00	0.00	1.99	0.00	0.00
9	Mahendra park-Chidiya Khola	NH	H10	H1004	4.10	0.00	0.00	4.10	0.00	0.00
10	Bhairahawa-Bhairahawa municipality boundary	FRN	F044	F04401	4.40	0.00	0.00	4.40	0.00	0.00
11	Bhairahawa municipality boundary-Lumbini Junction	FRN	F044	F04402	13.65	0.00	0.00	13.65	0.00	0.00
12	Lumbini Junction-Padaria Chok	FRN	F044	F04403	4.73	0.00	0.00	4.73	0.00	0.00
13	Padariya Chok-Kakrahawa	FRN	F044	F04404	8.00	0.00	0.00	8.00	0.00	0.00
14	Lumbini-Kothi bridge	FRN	F045	F04501	5.71	0.00	0.00	5.71	0.00	0.00
15	Amawa-Bhairahawa (H10)	FRN	F130	F13003	14.75	0.00	0.00	14.75	0.00	0.00
16	Ramapur (MRM)-Lumbini	FRN	F135	F13501	22.80	0.00	0.00	22.80	0.00	0.00
17	Shivgadhiya-Padariya(Lumbini-Circumambulatory)	FRN	F136	F13601	0.00	6.00	0.00	6.00	0.00	0.00
18	Padariya-Shivgadhiya(Lumbini-Circumambulatory)	FRN	F136	F13602	6.60	0.00	0.00	6.60	0.00	0.00
19	Saljhandi- Satyawati(District Border)	FRN	F194	F19401	3.50	5.00	3.00	11.50	0.00	0.00
Total					155.85	11.00	3.00	169.85	0.00	0.00

DISTRICT:KAPILBASTU

ZONE:LUMBINI

REGION:WESTERN

S.N	Name of Road	Class	Ref No	Link Code	BT	GR	ER	Total	UC	PL
1	Kothi River-Jitpur	NH	H01	H0148	4.92	0.00	0.00	4.92	0.00	0.00
2	Jitpur-Gorusinge	NH	H01	H0149	14.60	0.00	0.00	14.60	0.00	0.00
3	Gorusinge-Chanauta	NH	H01	H0150	19.27	0.00	0.00	19.27	0.00	0.00
4	Chanauta-Dhan Khola	NH	H01	H0151	22.05	0.00	0.00	22.05	0.00	0.00
5	Jitpur-Taulihawa municipality boundary	FRN	F010	F01001	18.00	0.00	0.00	18.00	0.00	0.00
6	Taulihawa municipality boundary-Bank Chauraha	FRN	F010	F01002	4.53	0.00	0.00	4.53	0.00	0.00
7	Bank Chauraha-Taulihawa municipality boundary	FRN	F010	F01003	3.02	0.00	0.00	3.02	0.00	0.00
8	Taulihawa municipality boundary-khunuwa	FRN	F010	F01004	7.84	0.00	0.00	7.84	0.00	0.00
9	Taulihawa-Gorusinge	FRN	F011	F01101	3.00	11.00	0.00	14.00	0.00	0.00
10	Gorusinge-Patharkot	FRN	F011	F01102	11.01	0.00	0.00	11.01	0.00	0.00
11	Patharkot-Kapilvastu district border	FRN	F011	F01103	1.33	0.00	0.00	1.33	0.00	0.00
12	Chanauta-Bahadurgunj	FRN	F012	F01201	12.02	0.00	0.00	12.02	0.00	0.00
13	Bahadurgunj-Krishnanagar	FRN	F012	F01202	8.04	0.00	0.00	8.04	0.00	0.00
14	Kothi bridge-Taulihawa municipality boundary	FRN	F045	F04502	17.14	0.00	0.00	17.14	0.00	0.00
15	Taulihawa municipality boundary-Taulihawa	FRN	F045	F04503	1.70	0.00	0.00	1.70	0.00	0.00
16	Pipara(MRM)-Pakadi(F04502)	FRN	F137	F13701	0.00	8.00	11.56	19.56	0.00	0.00
17	Pakadi(F04502)-Chakar Chauda (IB)	FRN	F137	F13702	0.00	0.00	7.44	7.44	0.00	0.00
18	Kharindrapur(MRM)-Shitalpur-Bilmi	FRN	F200	F20001	0.00	0.00	0.00	0.00	0.00	18.00
19	Taulihawa-Bahadurgunj (Postal)	PR	H17	H1723	0.00	21.00	0.00	21.00	0.00	0.00
20	Krishnanagar-Chirai Naka (Chhotabhagwanpur) (Postal)	PR	H17	H1724	0.00	25.50	0.00	25.50	0.00	0.00
21	Chirai Naka (Chhotabhagwanpur)-Dhan Khola(MRM) (Postal)	PR	H17	H1725	0.00	0.00	0.00	0.00	0.00	8.00
Total					148.47	65.50	19.00	232.97	0.00	26.00

DISTRICT:ARGHAKHANCHI

ZONE:LUMBINI

REGION:WESTERN

S.N	Name of Road	Class	Ref No	Link Code	BT	GR	ER	Total	UC	PL
1	Ramsingh Khola-Rapti River	NH	H01	H0153	4.12	0.00	0.00	4.12	0.00	0.00
2	Kapilvastu district border-Thada Jugena	FRN	F011	F01104	24.48	0.00	0.00	24.48	0.00	0.00
3	Thada Jugena-Angure Ghumti	FRN	F011	F01105	18.30	0.00	0.00	18.30	0.00	0.00
4	Angure Ghumti-Sandhikharka	FRN	F011	F01106	14.01	0.00	0.00	14.01	0.00	0.00
5	Neta Gaun-Sandhikhark	FRN	F134	F13402	0.00	0.00	42.00	42.00	0.00	0.00
6	Sandhikharka-Asurkot-Lamdanda	FRN	F134	F13403	0.00	0.00	0.00	0.00	0.00	33.00
7	Badahare R (District Border)-Khachi R	FRN	F194	F19403	0.00	0.00	44.00	44.00	0.00	0.00
8	Sandhikhark-Sautamare(District Border)	FRN	F194	F19404	0.00	0.00	24.00	24.00	0.00	0.00
Total					60.91	0.00	110.00	170.91	0.00	33.00

